

## COMMUNE DE SAINT LUPICIN

Lieu dit "Pré Colas"

39170 SAINT LUPICIN

**CREATION DE 12 LOGEMENTS LOCATIFS PASSIFS**

## CARNET DE DETAILS

Maitre d'Ouvrage

**CAP Habitat**

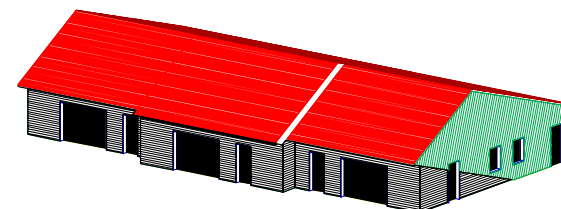
OPH St Claude

39200 SAINT CLAUDE

## SAINT LUPICIN

Dessiné par : P.B.

Date : 21/12/2016



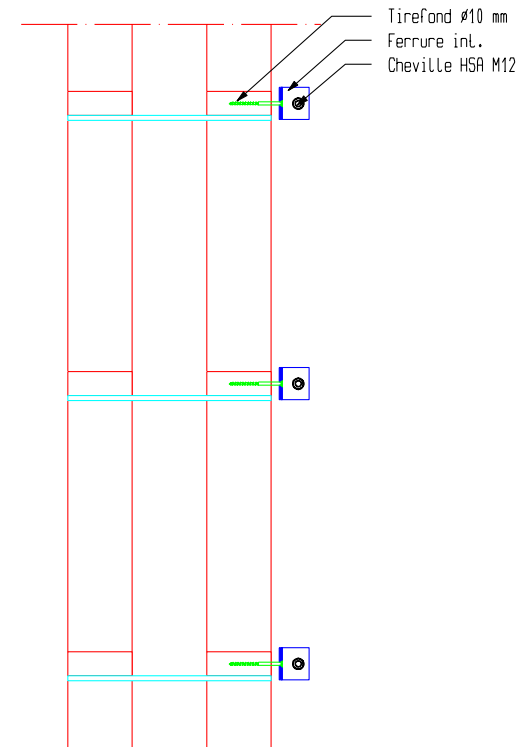
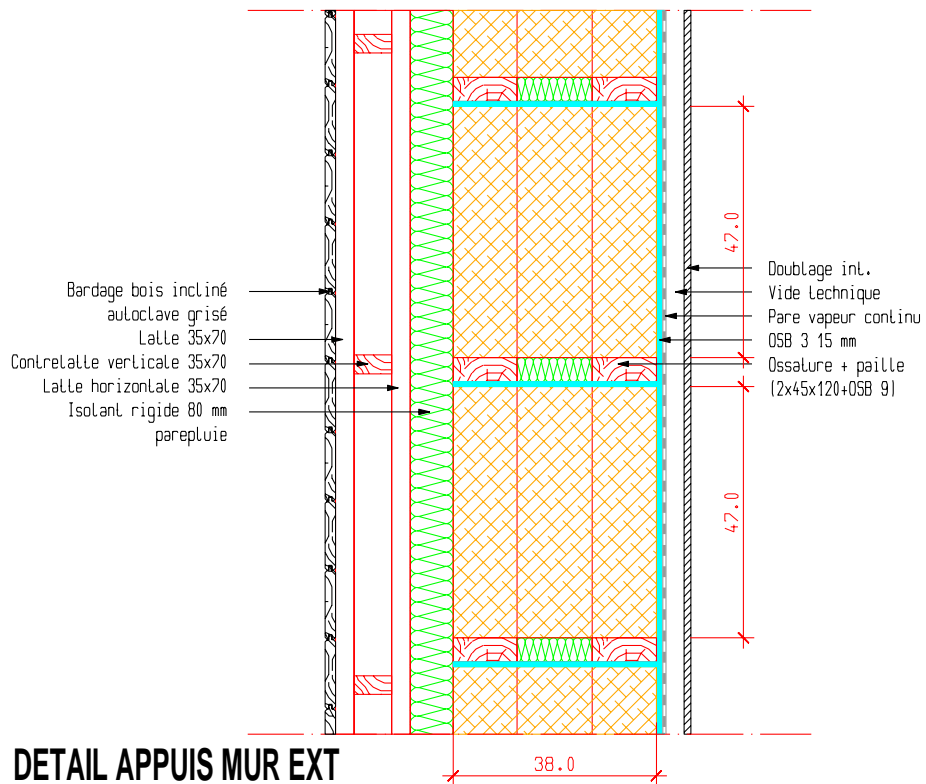
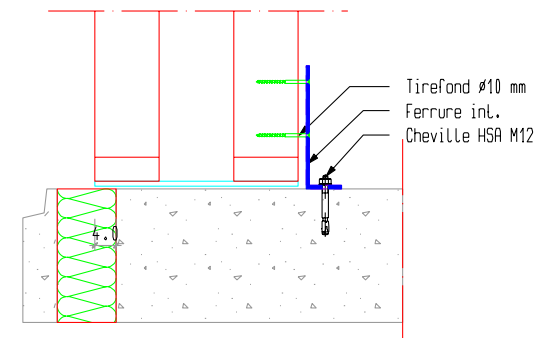
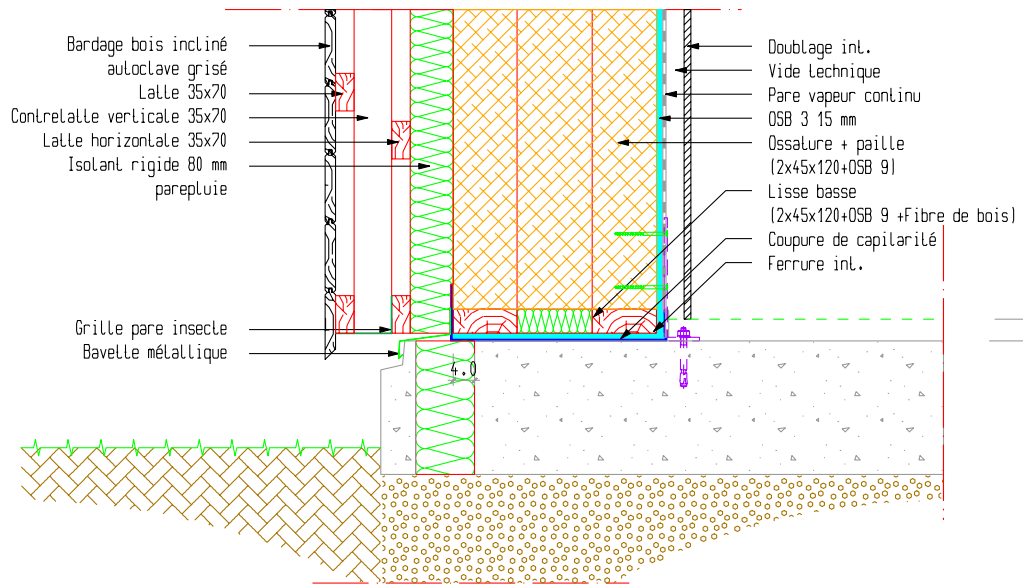
Date	Indice	Modification
21/12/16	Ind 0	Mise à jour suivant reunion du 16/12/2016
13/01/17	Ind A	Mise à jour menuiseries / hauteur mur / angle
17/01/17	Ind B	Détail de radier

Matériau	Hachure
Acier	
LC	
LC Cl III	
Massif	
Massif CL III	
Contrecollé	
Béton	
OSB	
QUINCAILLERIE	

### CARACTERISTIQUES DES MATERIAUX (Sauf indications contraires)

- Lamellé Collé : GL24h
- Bois massif: C24
- Ferrures mécanosoudées : Acier S235
- Boulonnerie: Acier classe 4-6 mini

QUINCAILLERIE/ REFERENCE SIMPSON  
CHEVILLES D'ANCRAGE/ REFERENCE HILTI



**DETAIL APPUIS MUR EXT**

Bardage bois incliné  
 autoclave grisé  
 Lattes 35x70  
 Contrelatte verticale 35x70  
 Lattes horizontales 35x70  
 Isolant rigide 80 mm  
 parepluie

Doublage int.  
 Vide technique  
 Pare vapeur continu  
 OSB 3 15 mm  
 Ossature + paille  
 (2x45x120+OSB 9)

Cornière métallique

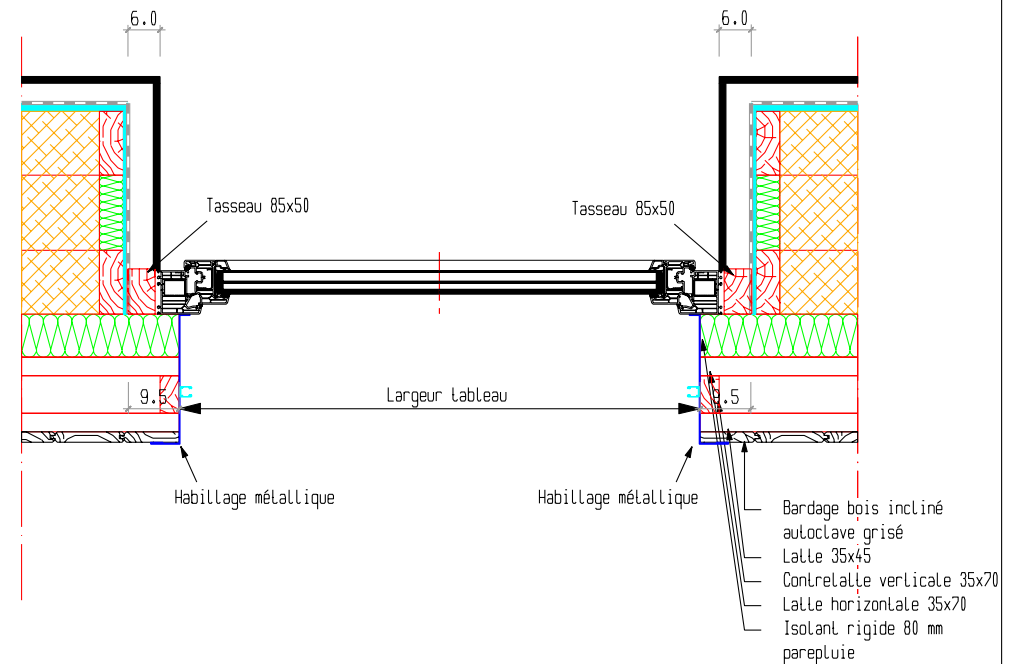
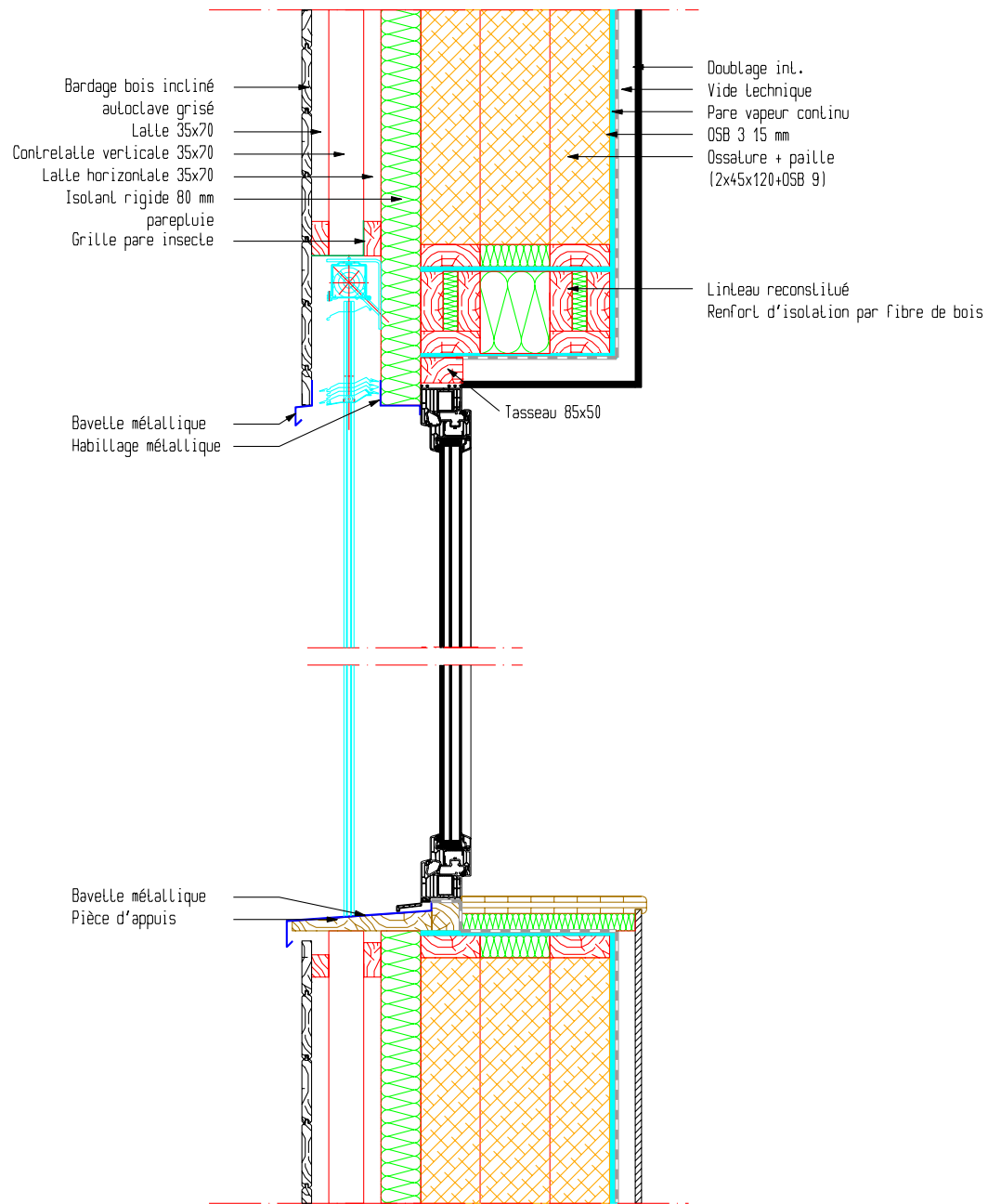
Boulon soudé  
 Ferrure ext.  
 Tirefond #10

Cornière métallique

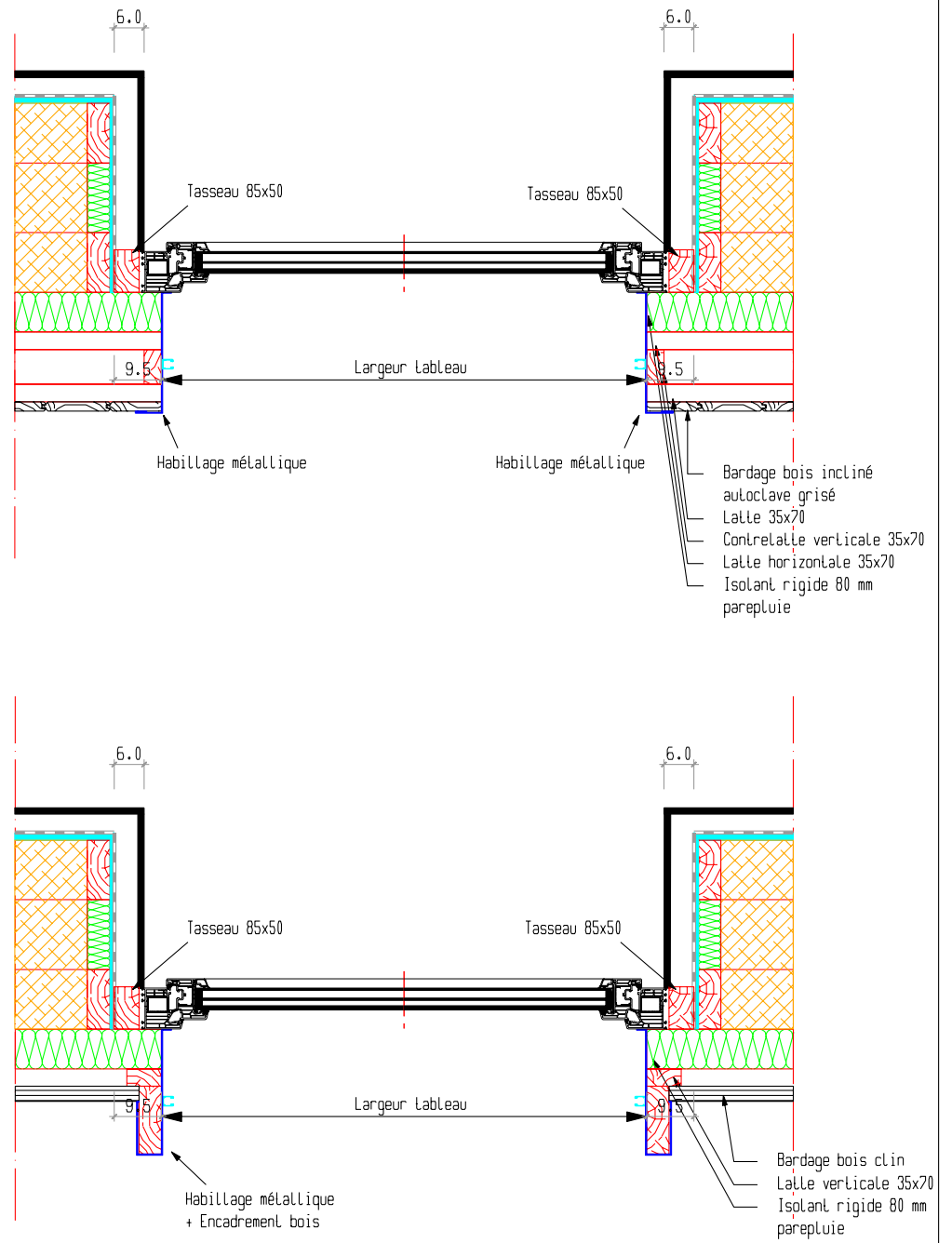
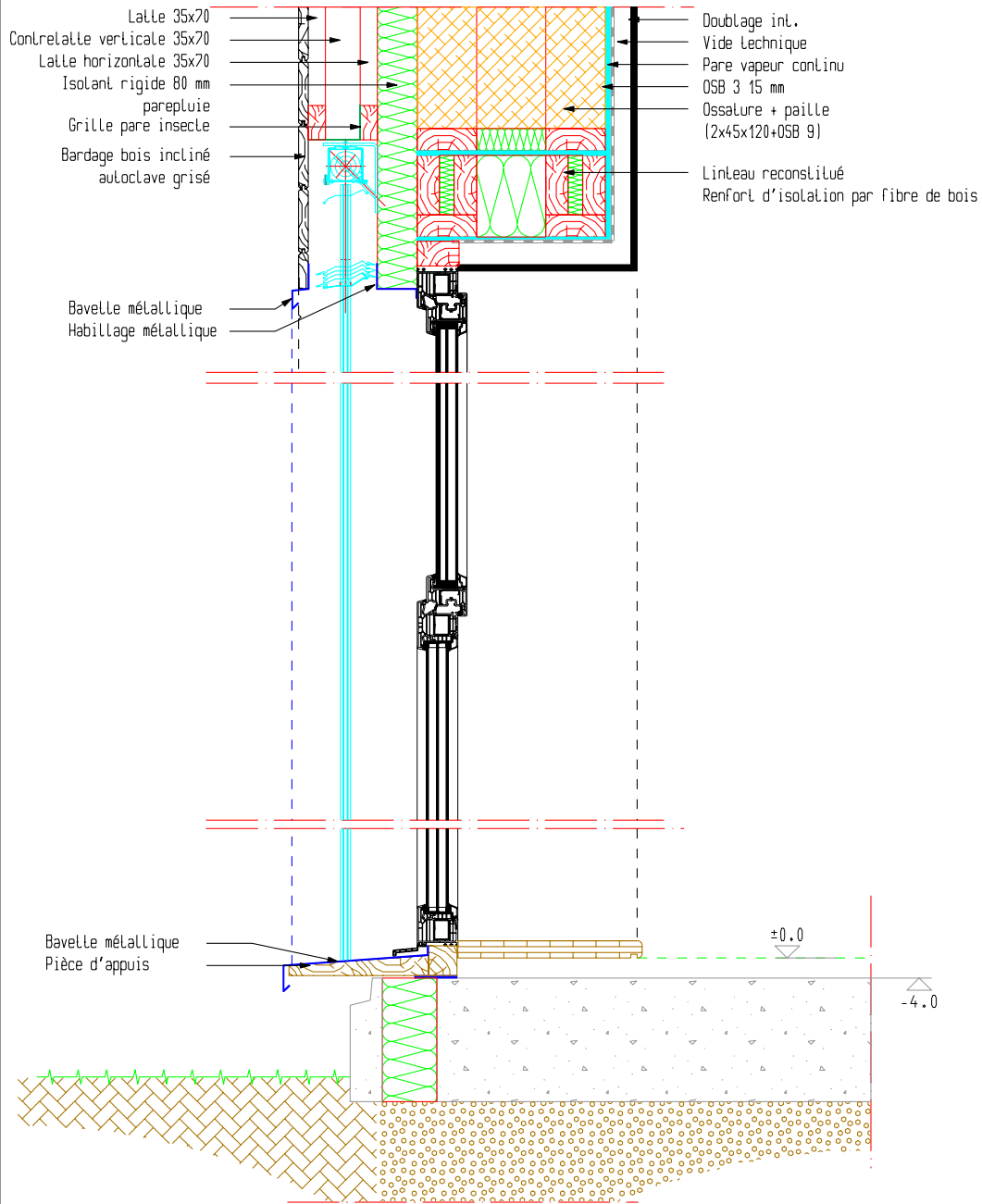
34.2

7.0  
 47.0 5.4 47.0 5.4

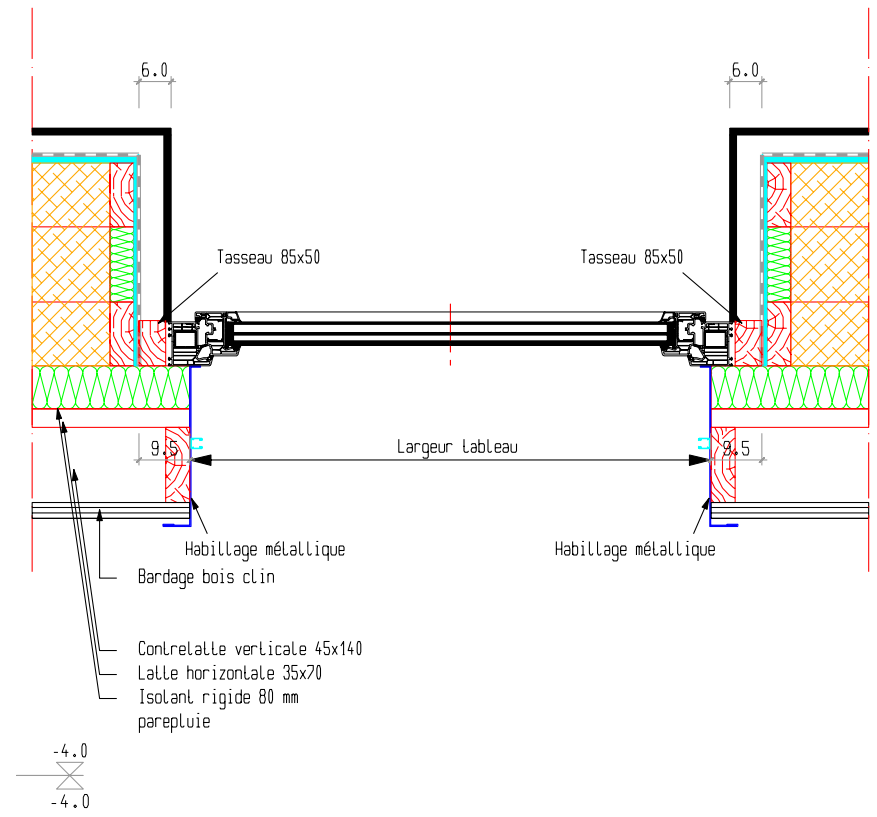
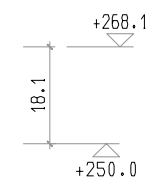
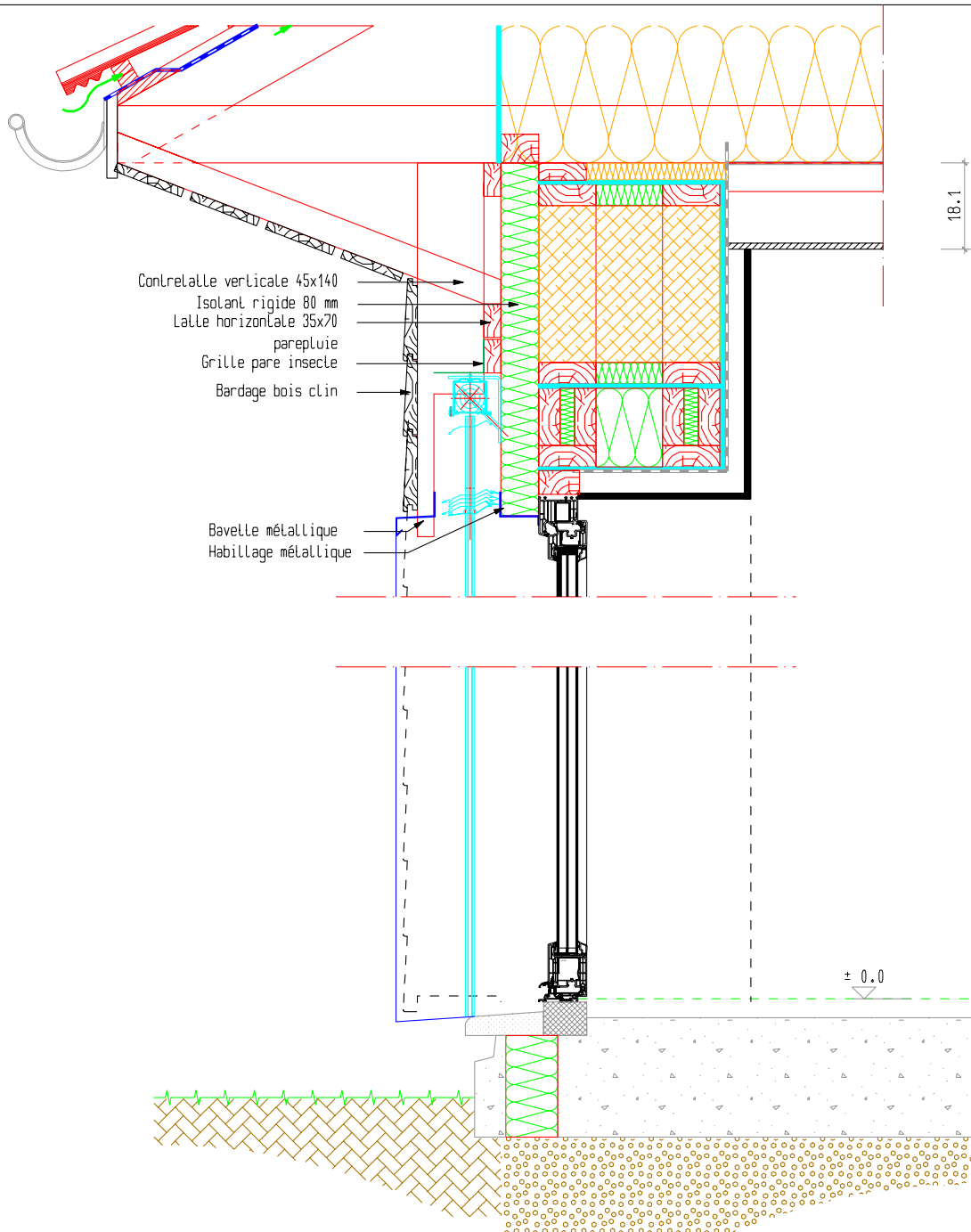
**DETAIL ANGLE MUR EXT**



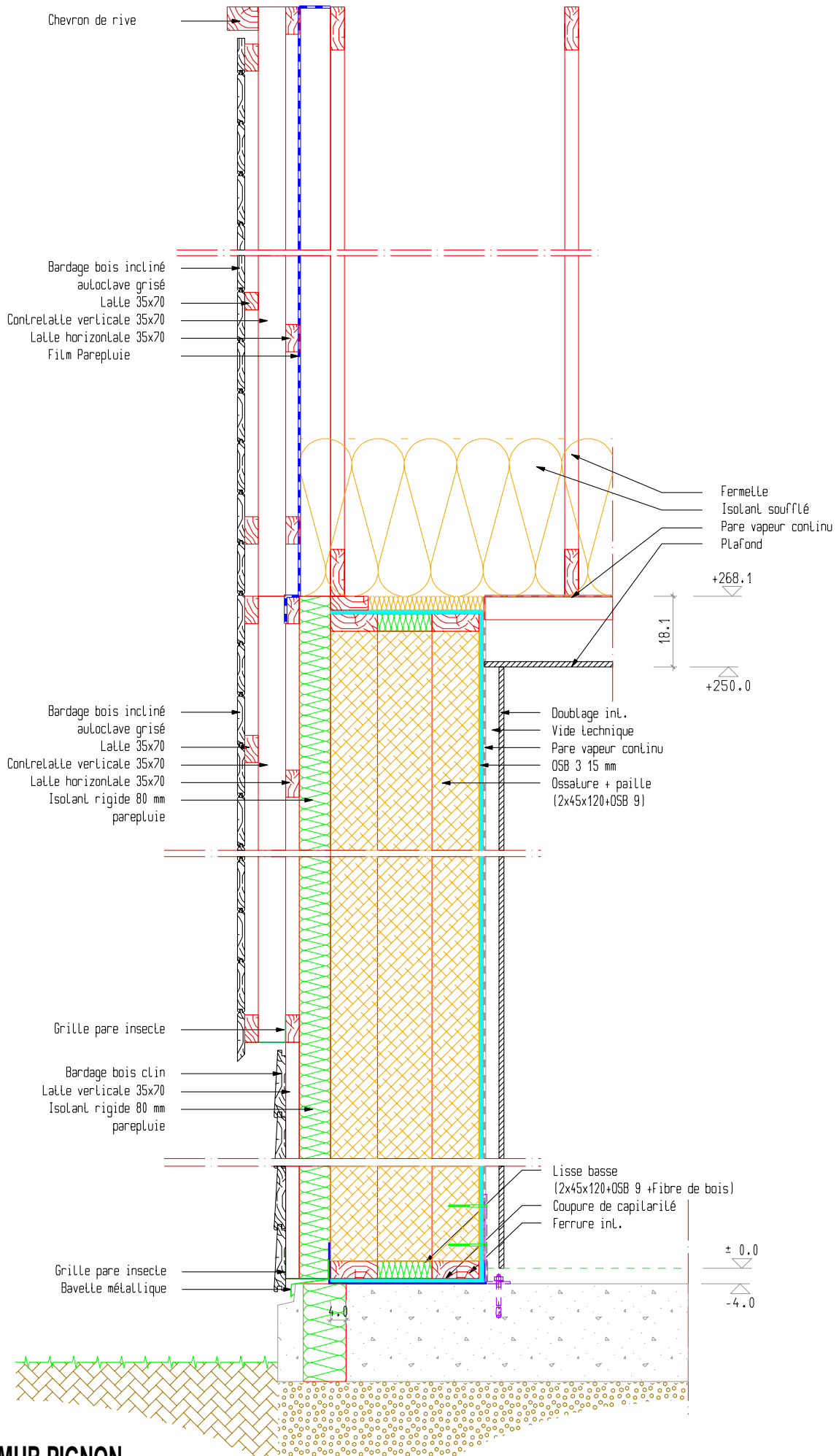
**DETAIL MENUISERIE MUR PIGNON - BARDAGE INCLINE**



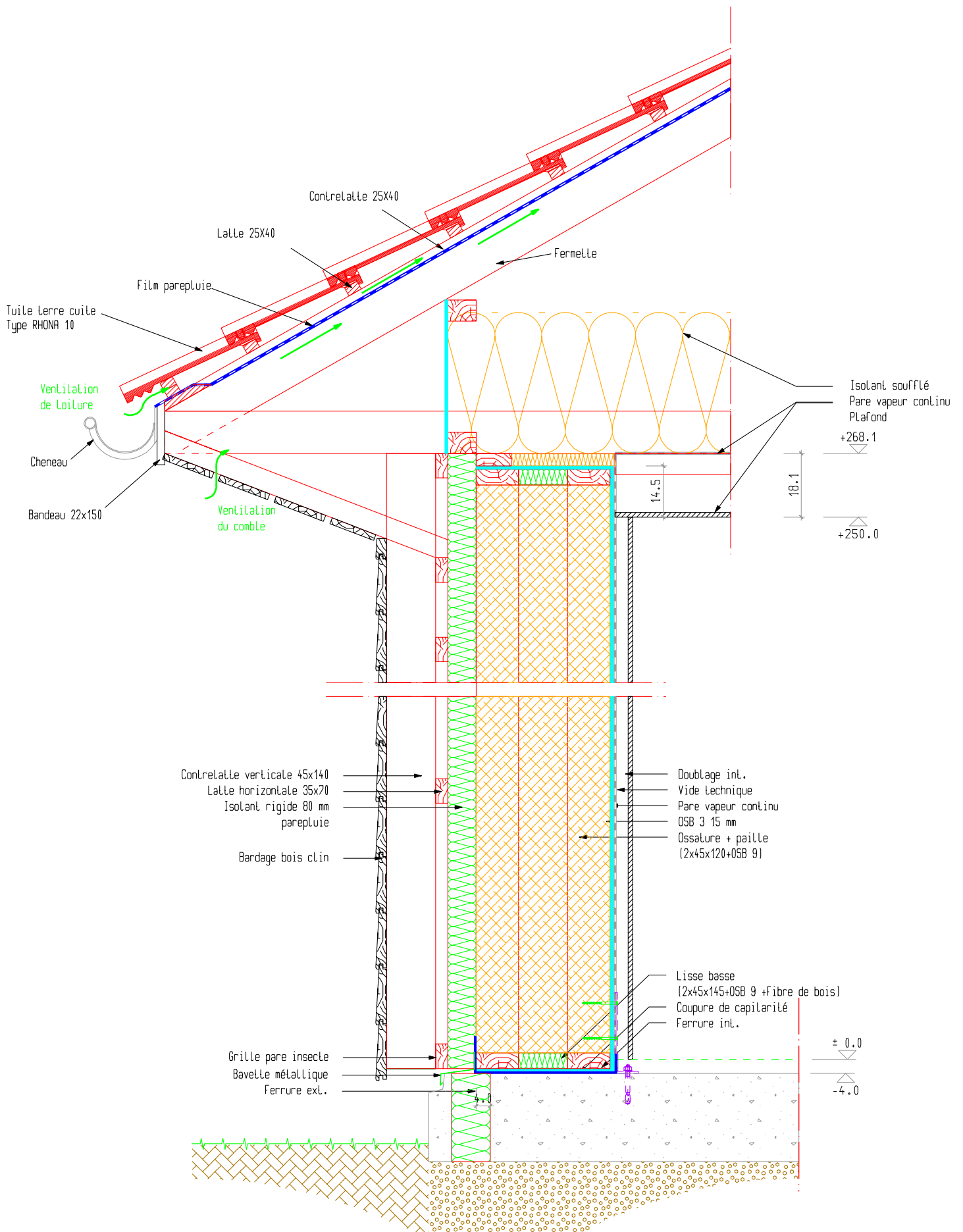
**DETAIL MENUISERIE MUR PIGNON - BARDAGE CLIN**



**DETAIL MENUISERIE FACADE NORD - BARDAGE CLIN**

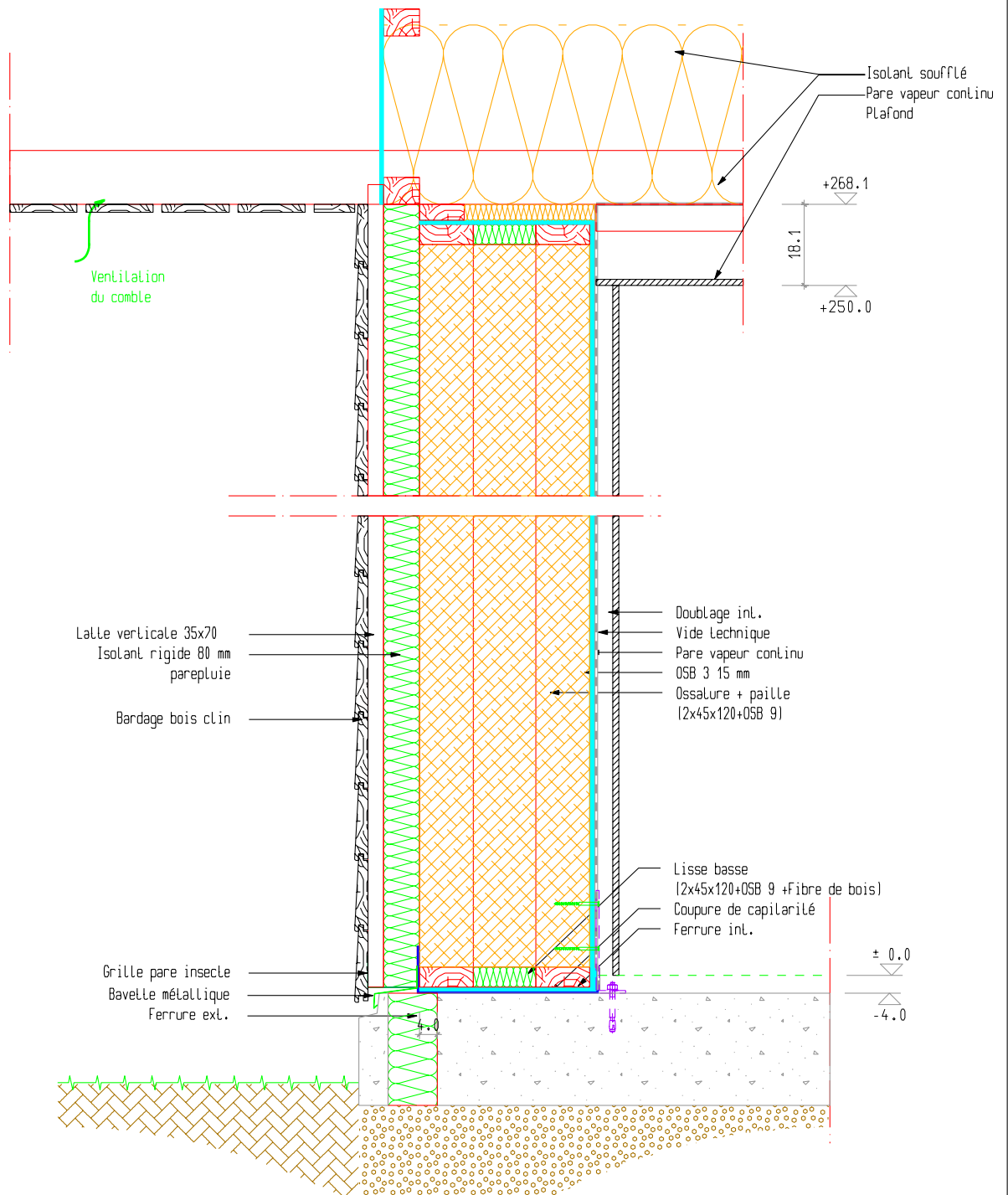


**COUPE SUR MUR PIGNON**



**COUPE SUR FACADE SUD**





**COUPE SUR FACADE NORD**

