

CHALOIN Frères

PROJET : MERLET

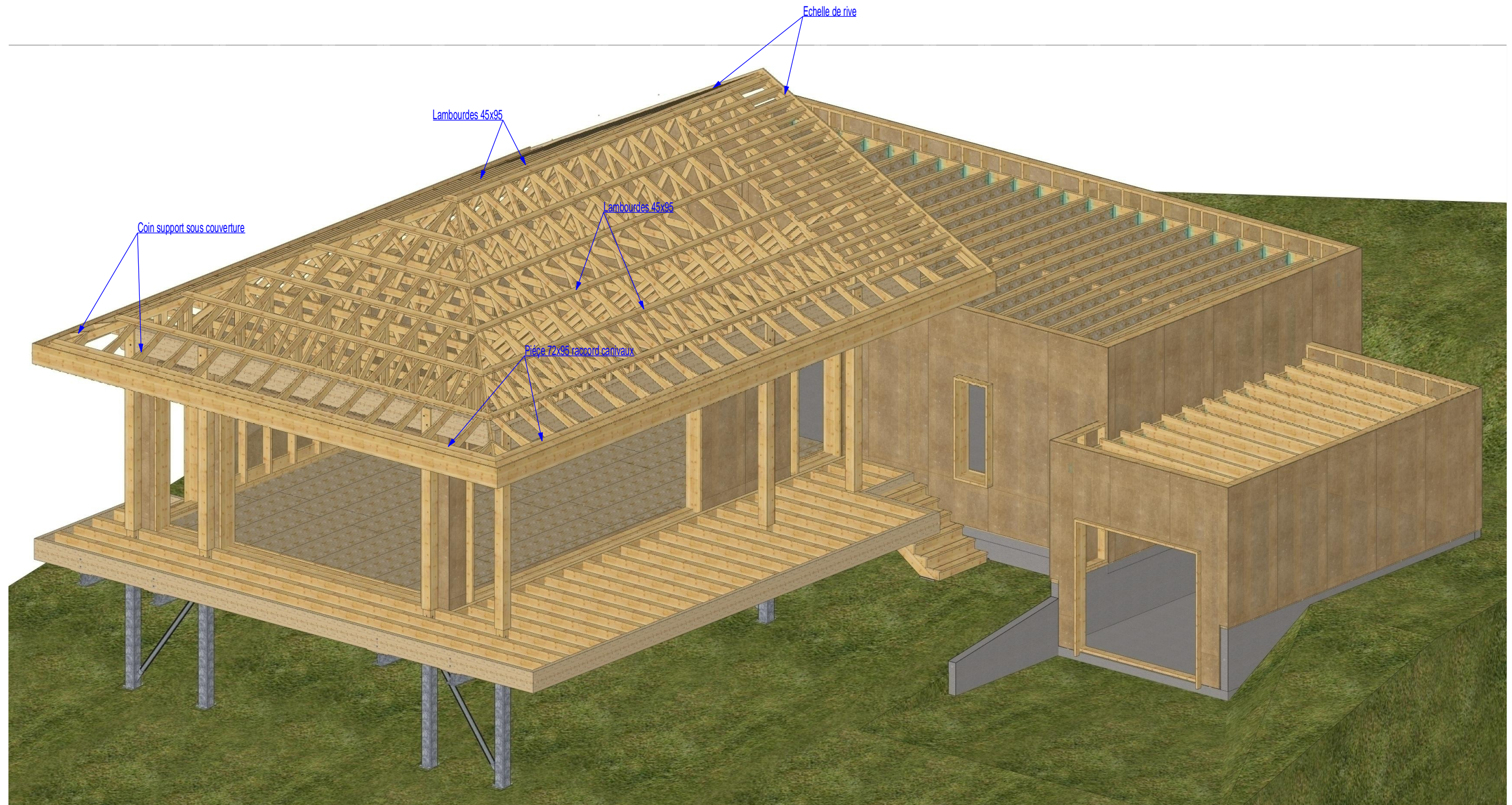


Z.A Bièvre Dauphiné 38690 COLOMBE

tel: 04.76.32.58.18 fax: 04.76.32.21.76

Axo total habitation

Ech:





CHALOIN Frères

PROJET : MERLET

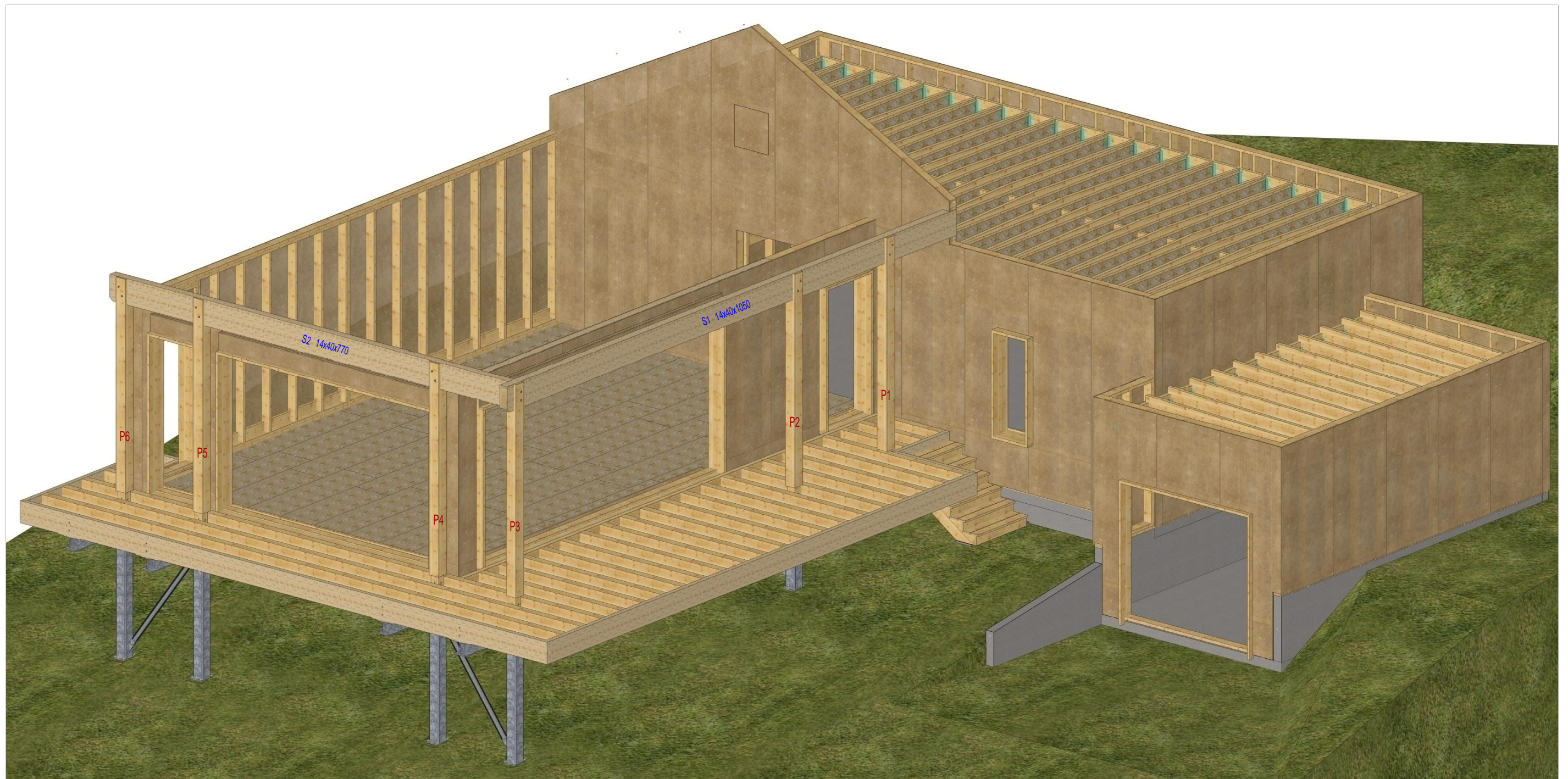


Z.A Bièvre Dauphiné 38690 COLOMBE

tel: 04.76.32.58.18 fax: 04.76.32.21.76

Axo murs ossatures, solivages, poteaux et porteurs fermettes

Ech: .....





CHALOIN Frères

PROJET : MERLET

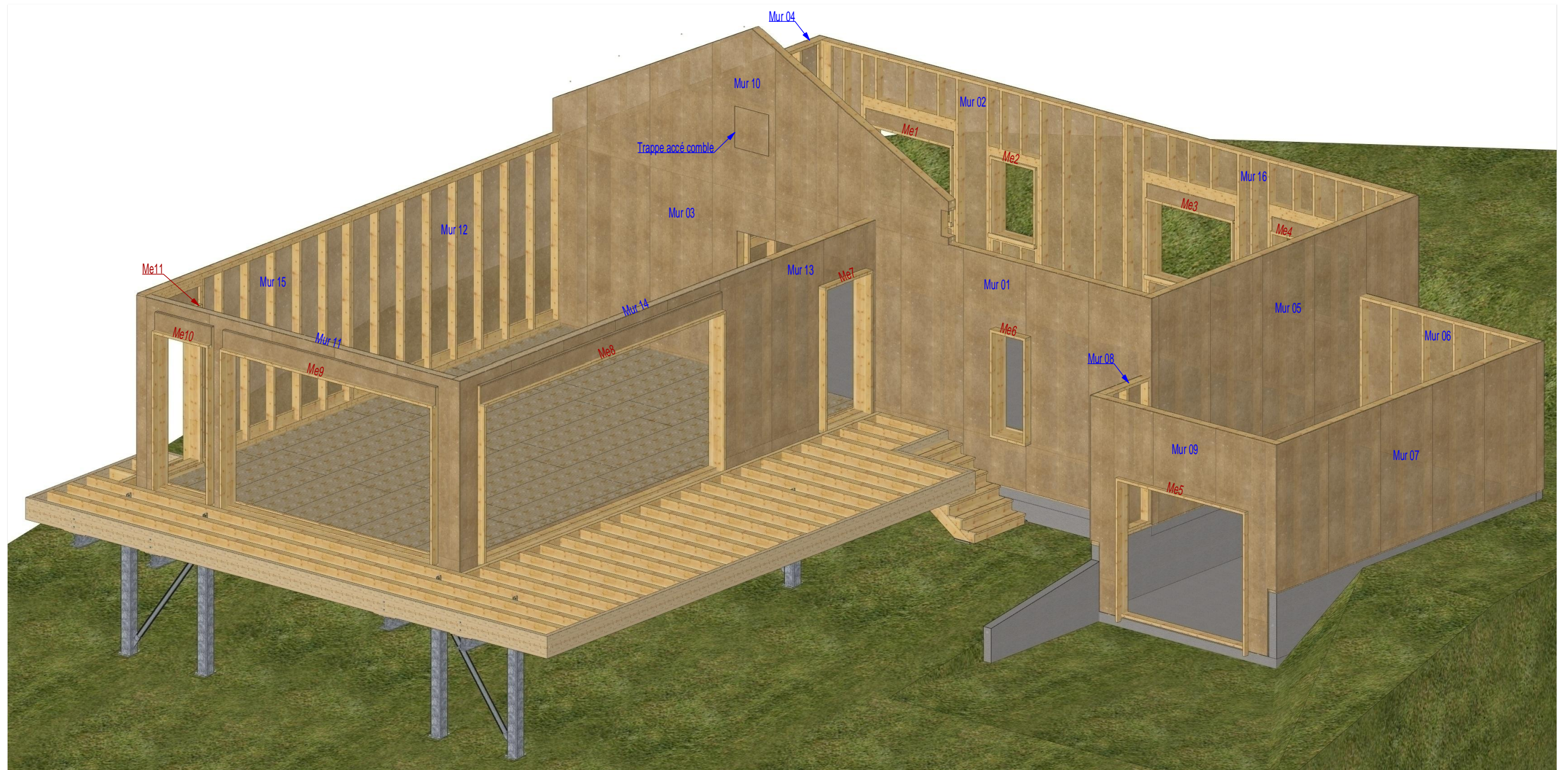


Z.A Bièvre Dauphiné 38690 COLOMBE

tel: 04.76.32.58.18 fax: 04.76.32.21.76

Axo murs ossatures, solivages et tableaux

Ech: .....





CHALOIN Frères

PROJET : MERLET

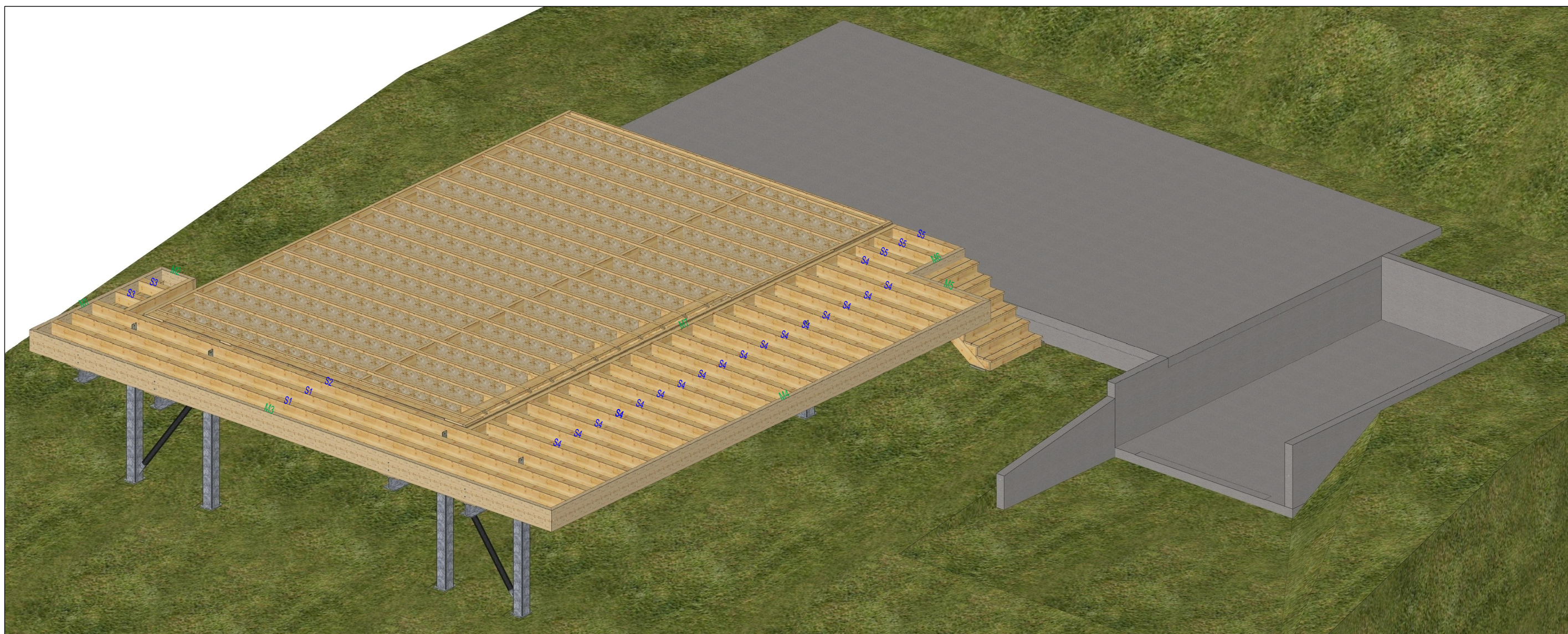


Z.A Bièvre Dauphiné 38690 COLOMBE

tel: 04.76.32.58.18 fax: 04.76.32.21.76

Axo solivages et maçonnerie

Ech:





CHALOIN Frères

PROJET : MERLET

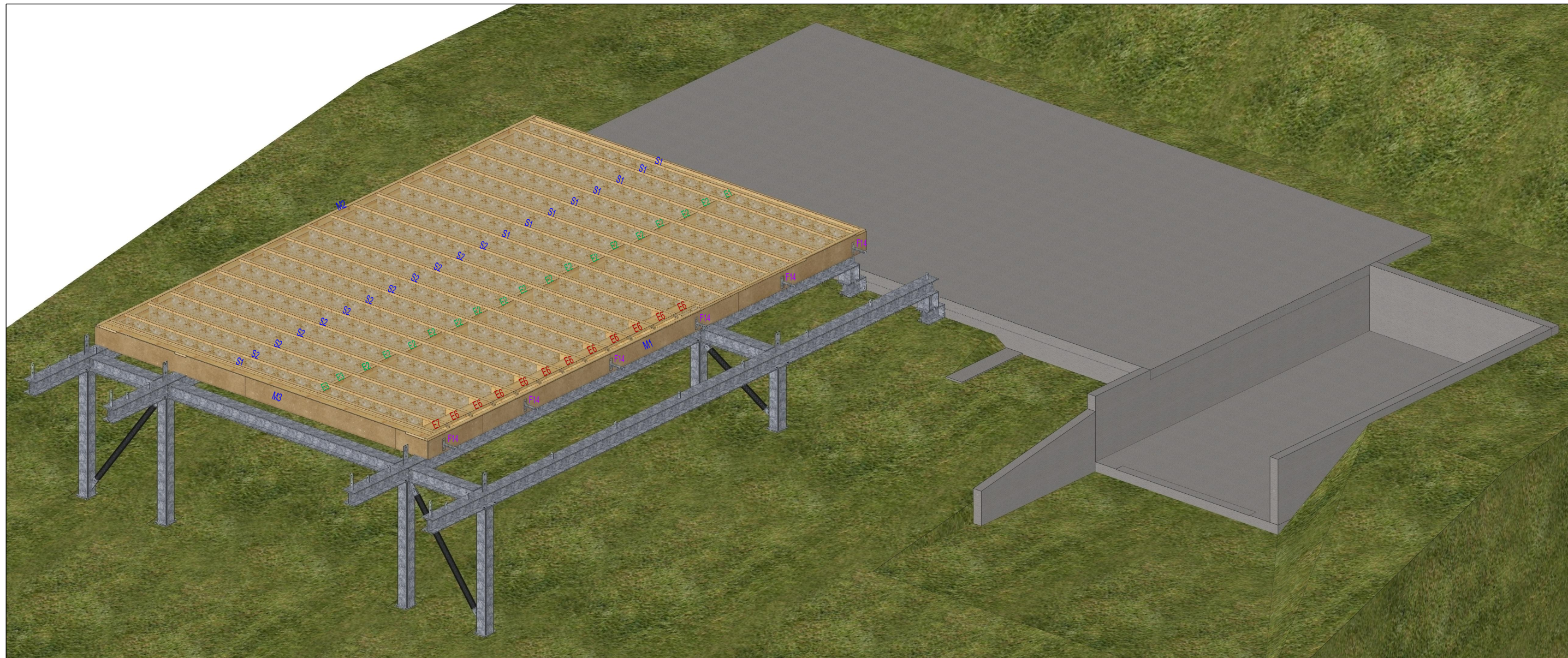


Z.A Bièvre Dauphiné 38690 COLOMBE

tel: 04.76.32.58.18 fax: 04.76.32.21.76

Axo solivage, structure métallique et maçonnerie

Ech: .....





CHALOIN Frères

PROJET : MERLET

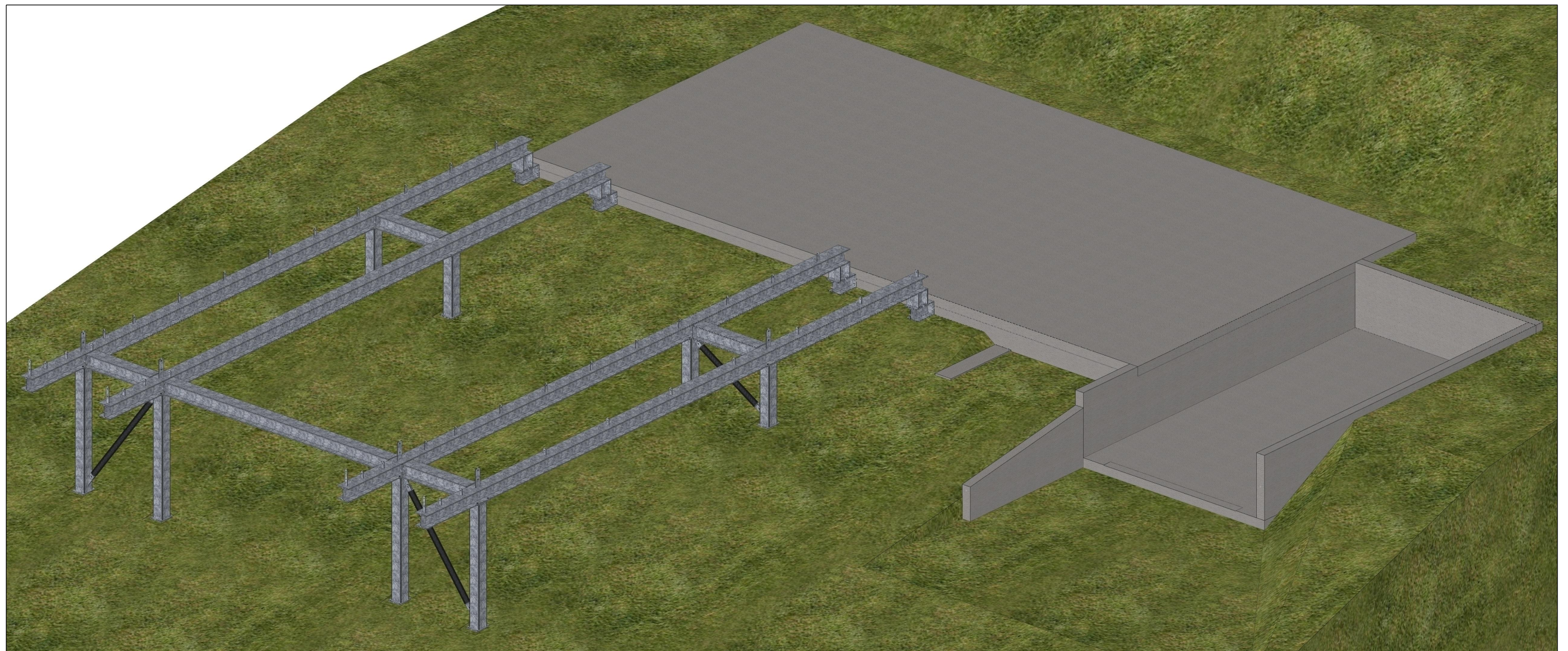


Z.A Bièvre Dauphiné 38690 COLOMBE

tel: 04.76.32.58.18 fax: 04.76.32.21.76

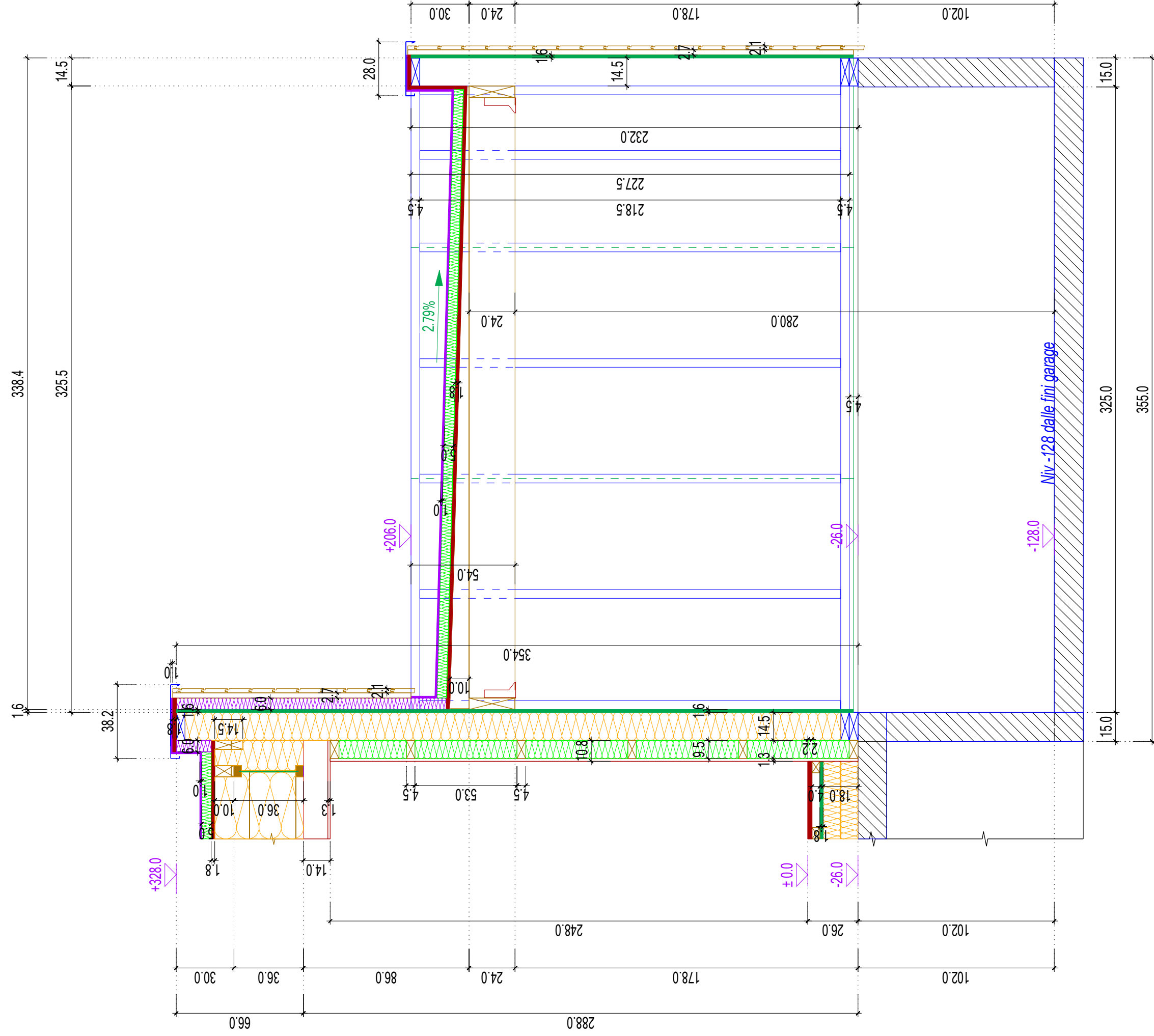
Axo structure métallique et maçonnerie

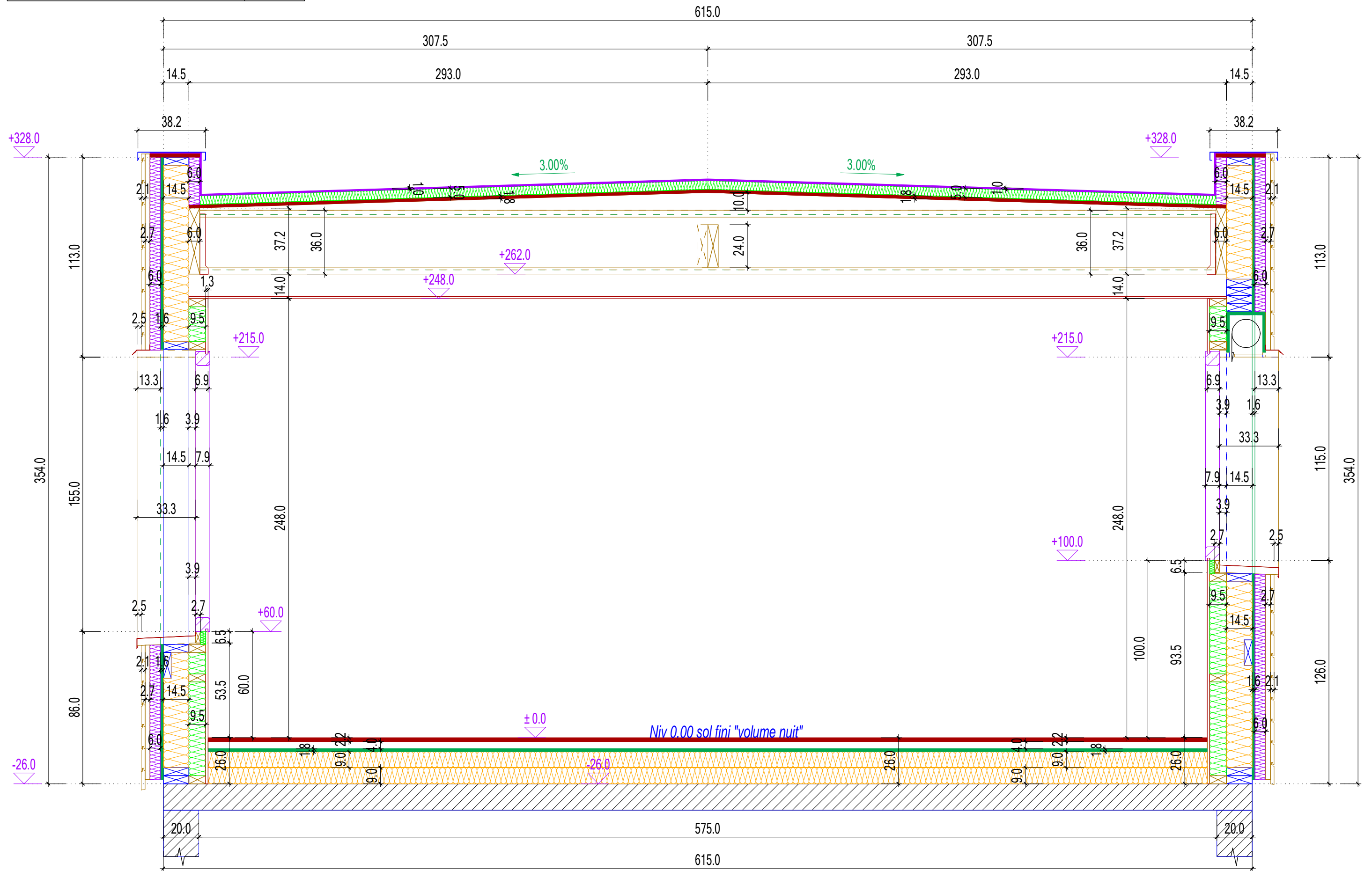
Ech: .....



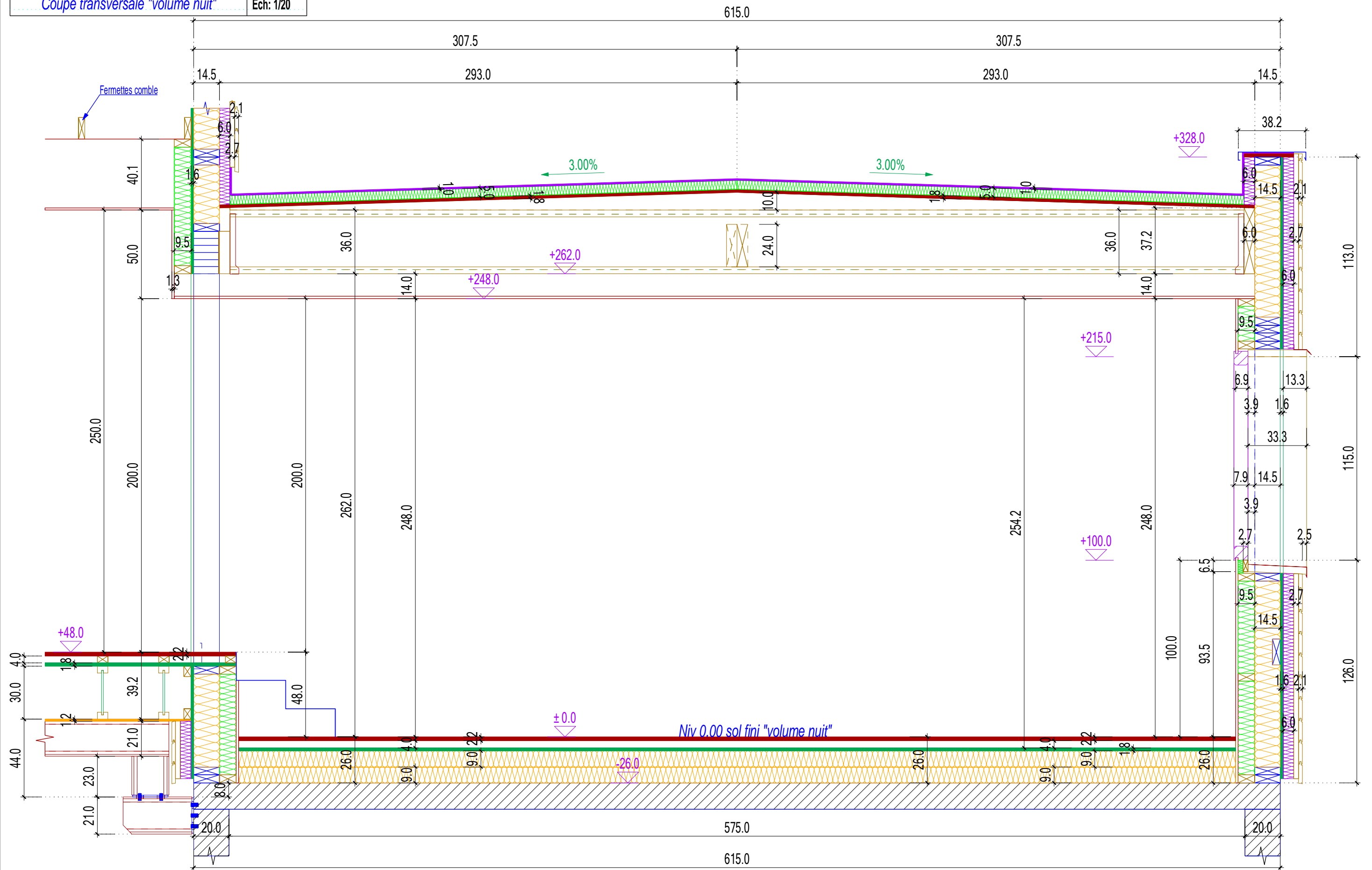


Coupe transversale partie Garage Ech: 1/20











-Pente 50% Altd: 550 m Commune: Oyeu

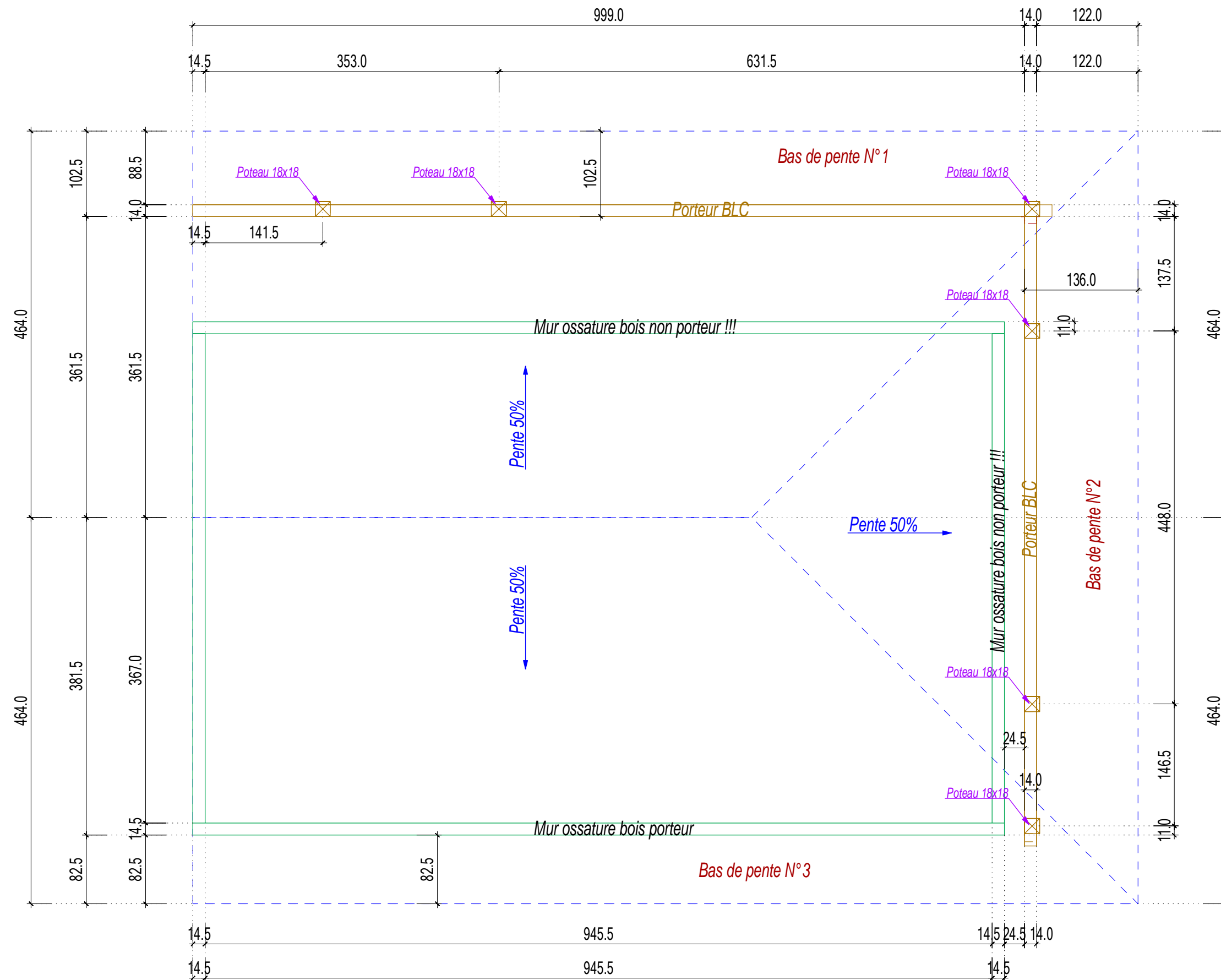
-Couverture Bacs acier

-Caisson de niveau en bas de pente

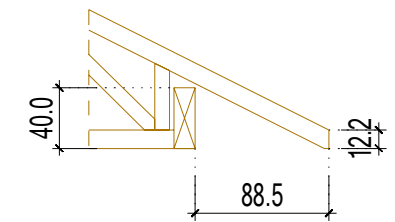
-Isolation ouate de cellulose 45 cm sur entrée

-Plafond Ba 13 et rails en sous face des entrain

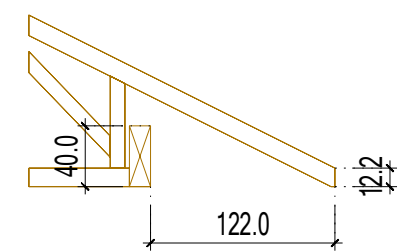
-Fourniture fermettes et contreventements uniquement



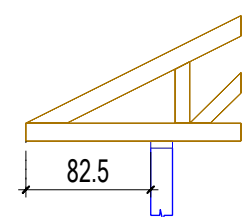
Principe bas de pente N°1



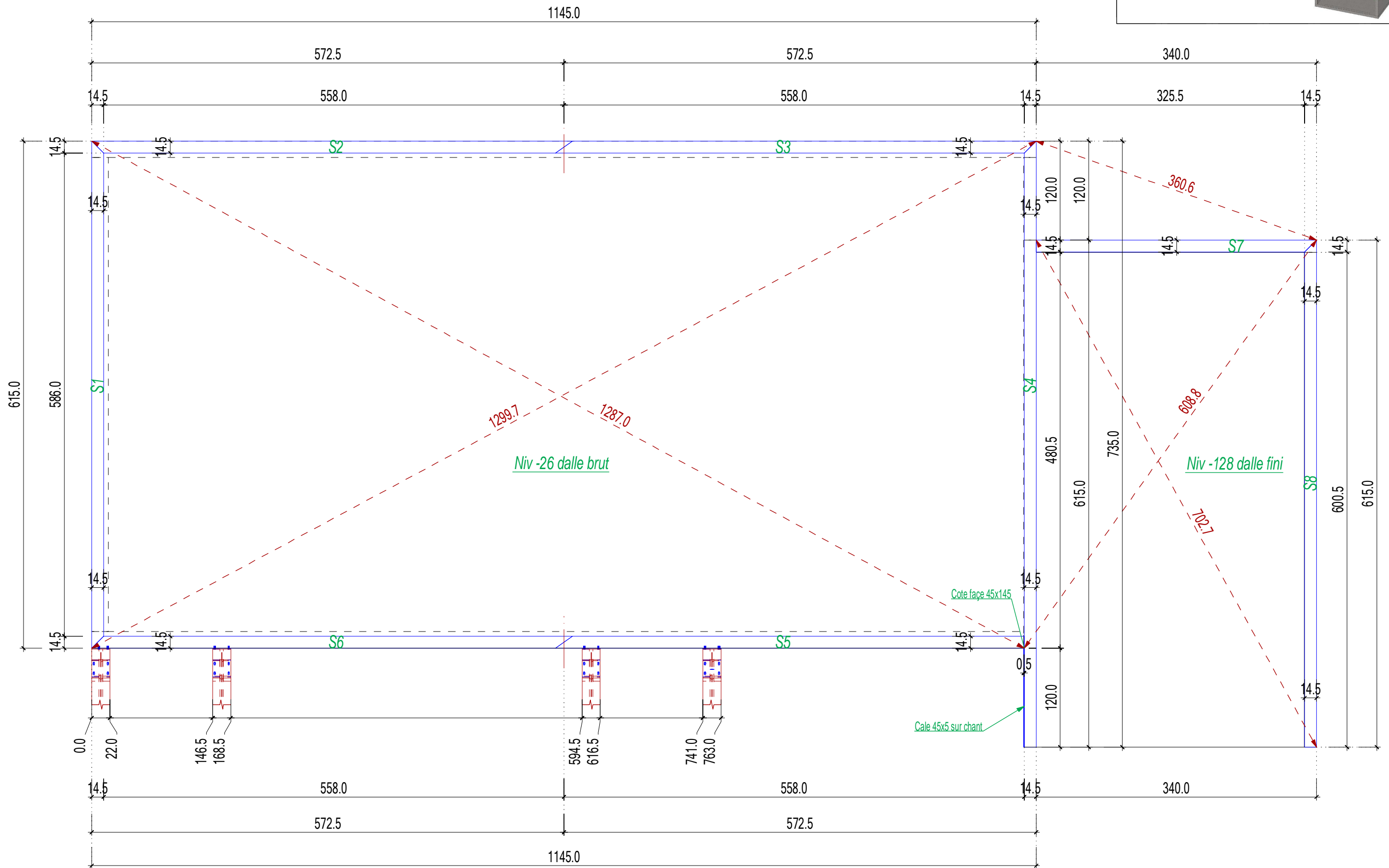
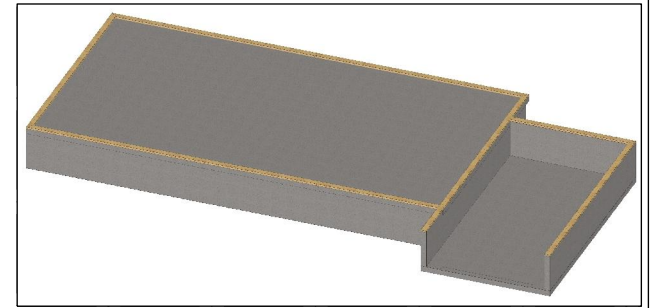
Principe bas de pente N°2



Principe bas de pente N°3









CHALOIN Frères

PROJET : MERLET



Z.A Bièvre Dauphiné 38690 COLOMBE

tel: 04.76.32.58.18 fax: 04.76.32.21.76

Coupe transversale "volume séjour"

Ech: 1/35

