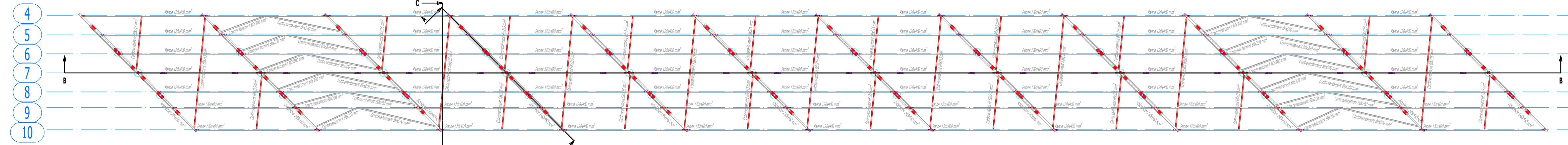
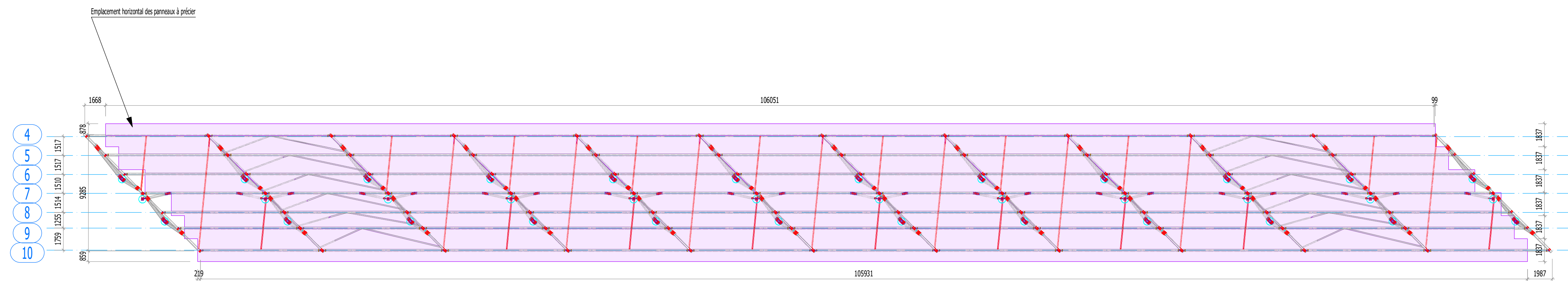


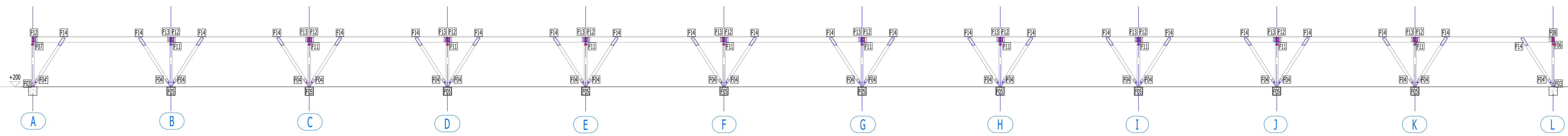
Implantation des ferrures de la charpente sur GO (Ech. : 1/200)



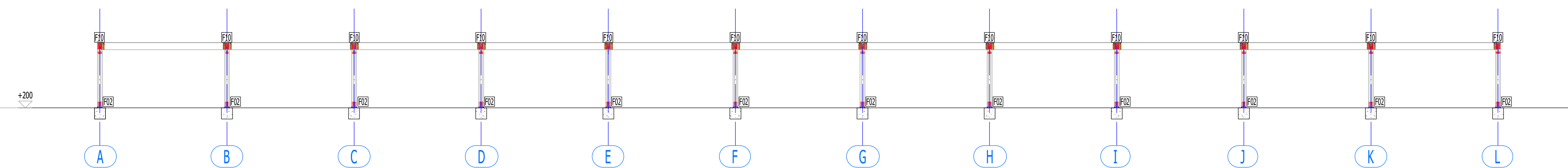
Vue en plan charpente en Z absolu (Ech. : 1/200)



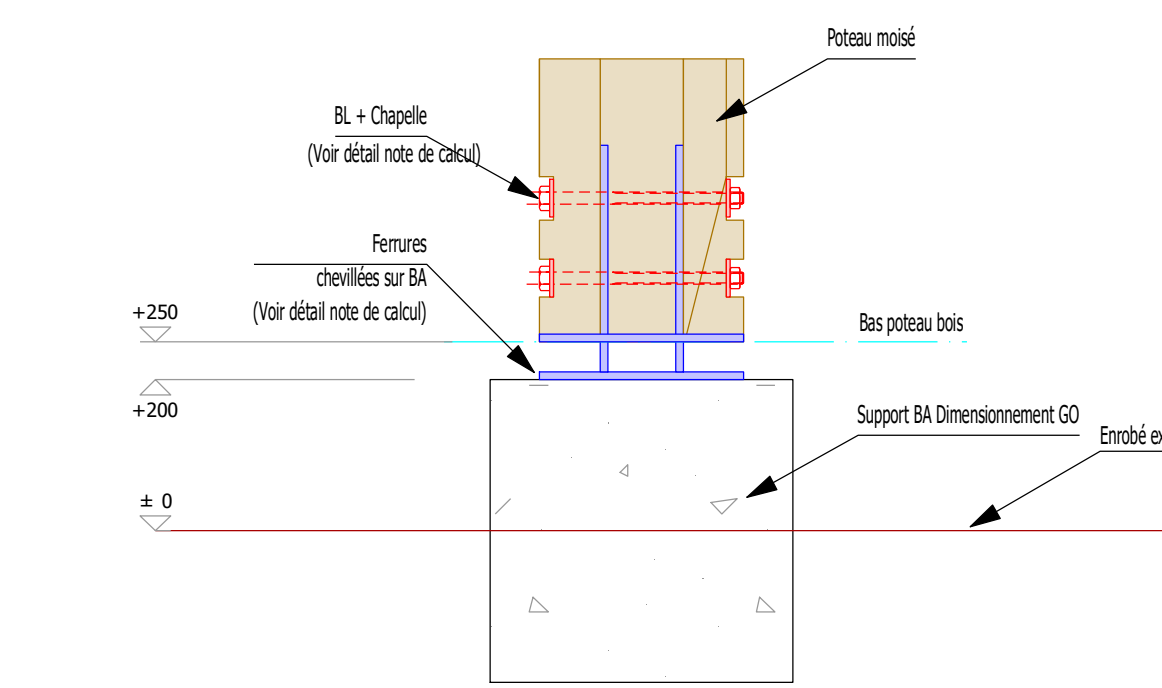
Vue en plan charpente au sens du rampant de couverture (Ech. : 1/200)



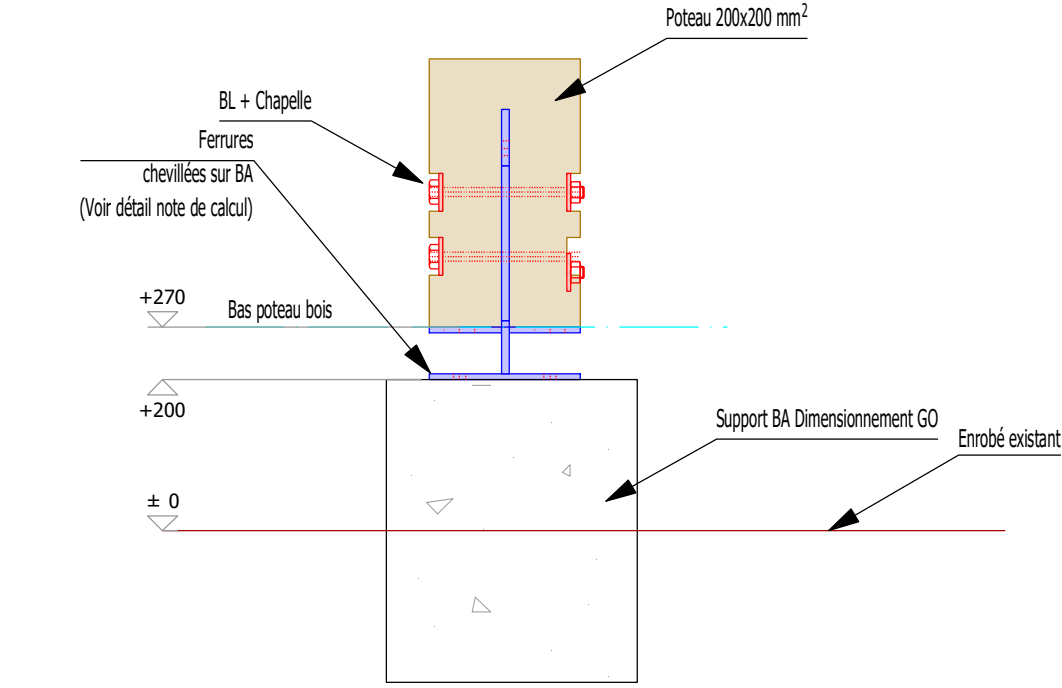
Coupe B-B en Y absolu (Ech. : 1/150)



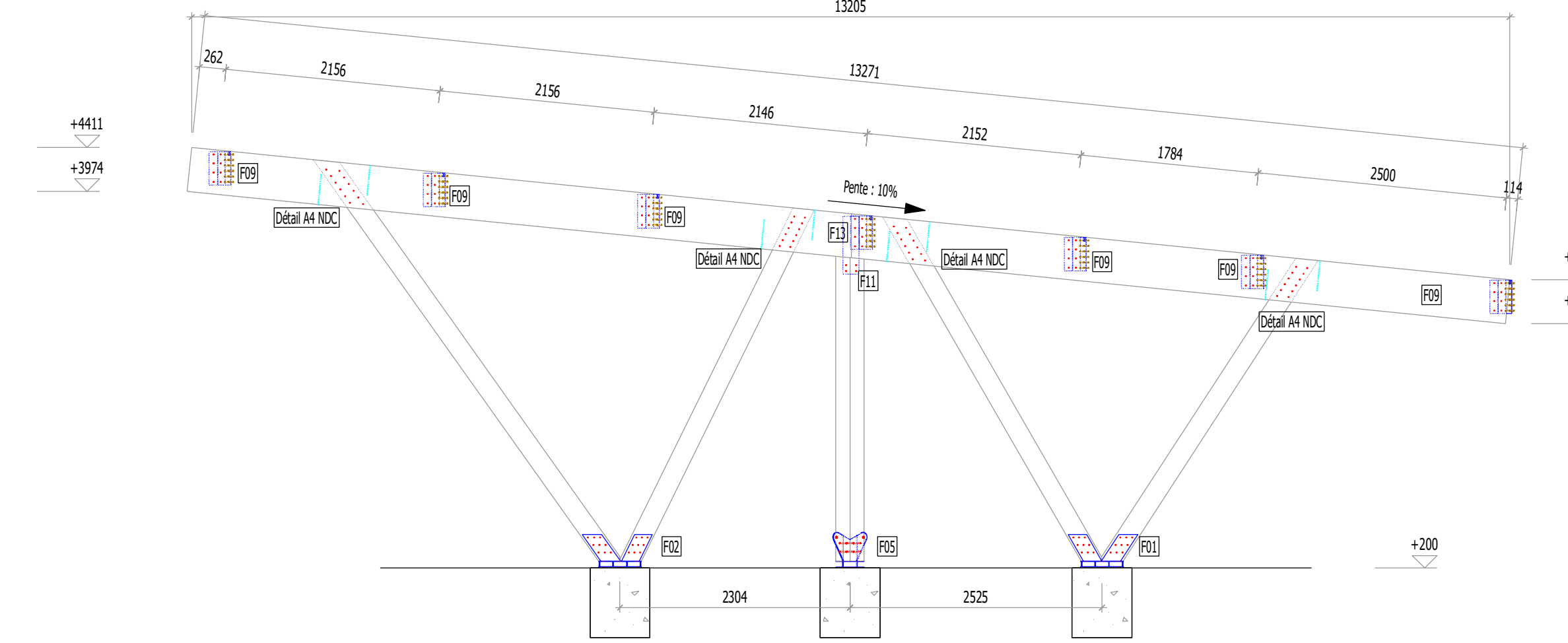
Coupe B-B face aux poteaux en V (Ech. : 1/150)



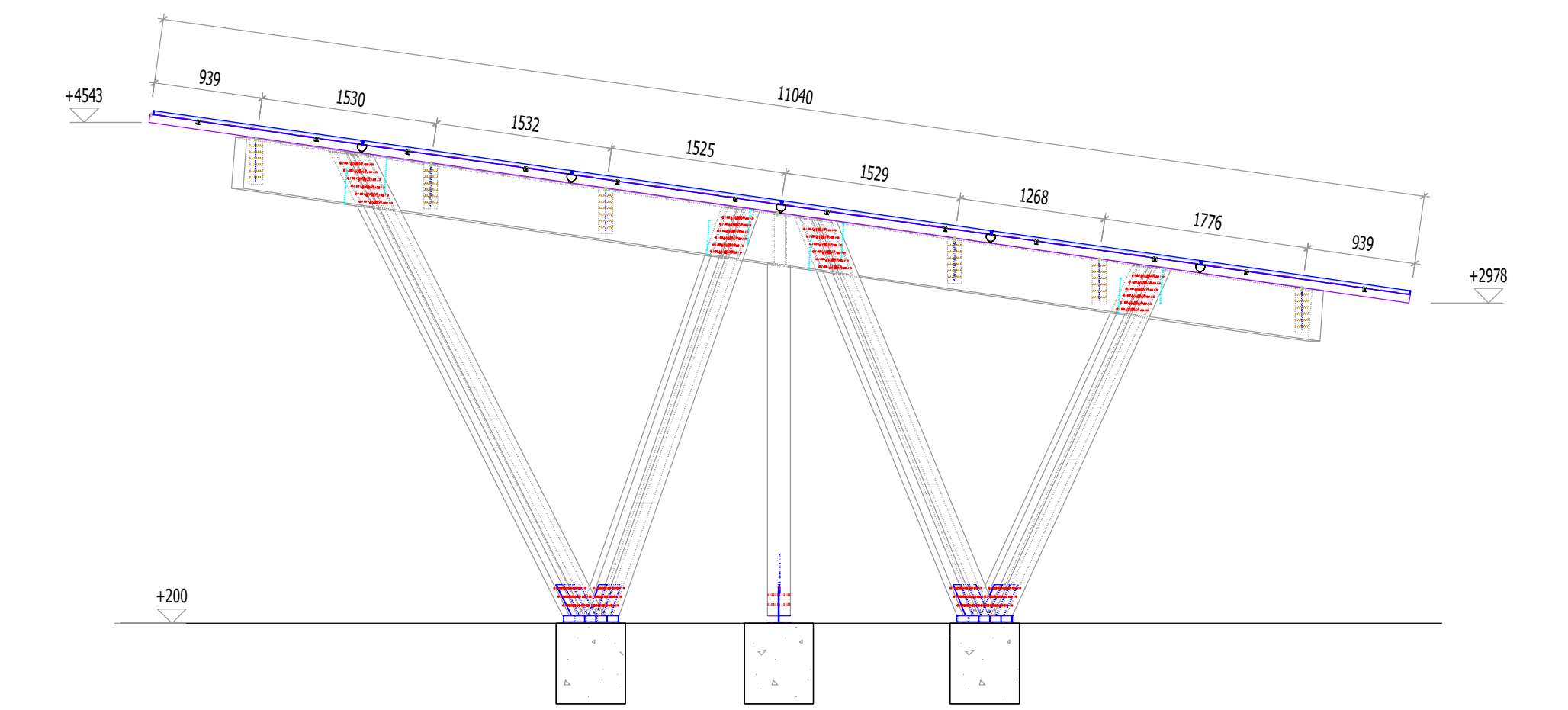
Détail pied de poteau en V (Ech. : 1/10)



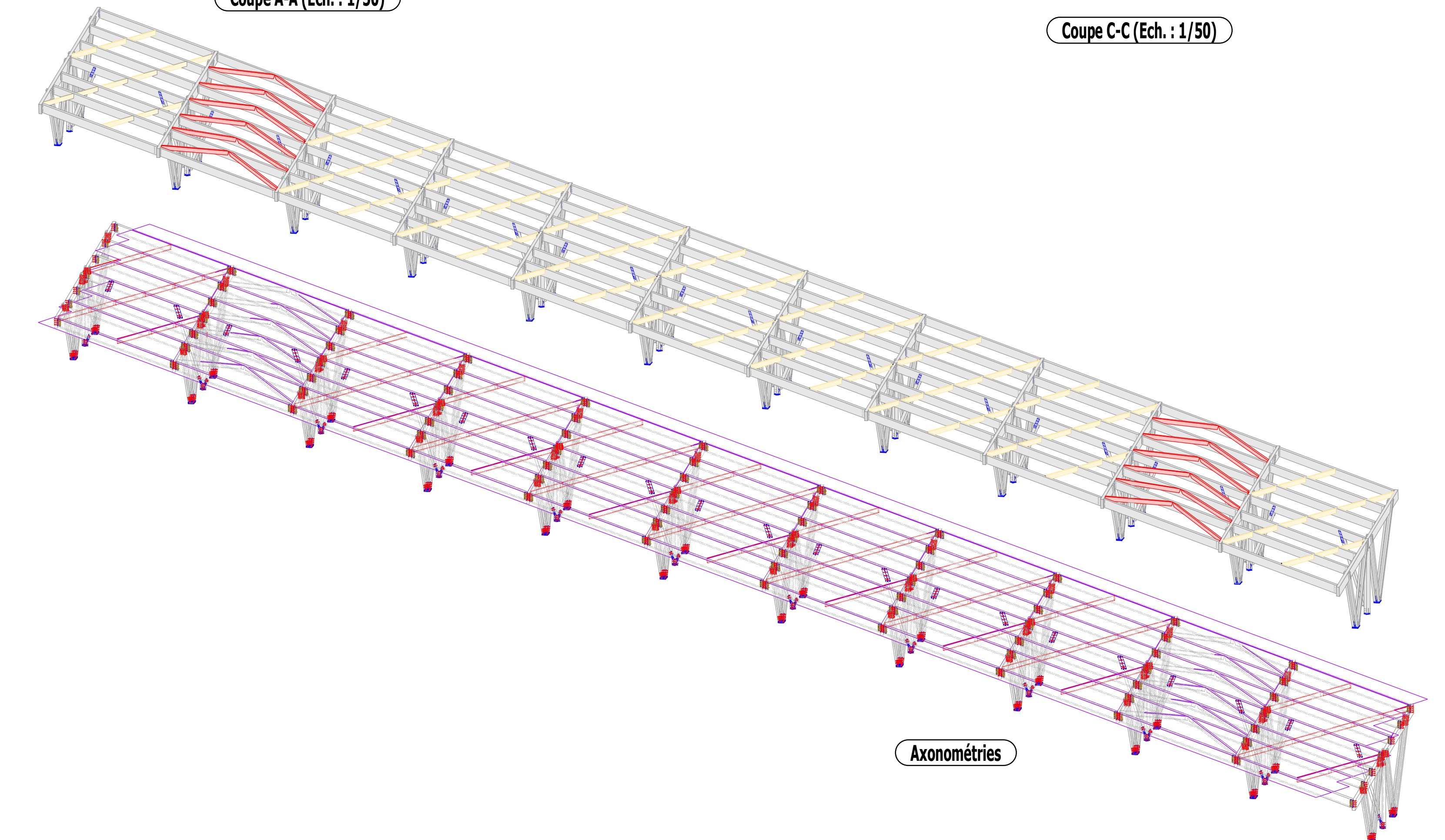
Détail pied de poteau en 200x200 mm² (Ech. : 1/10)



Coupe A-A (Ech. : 1/50)



Coupe C-C (Ech. : 1/50)



Axonométries