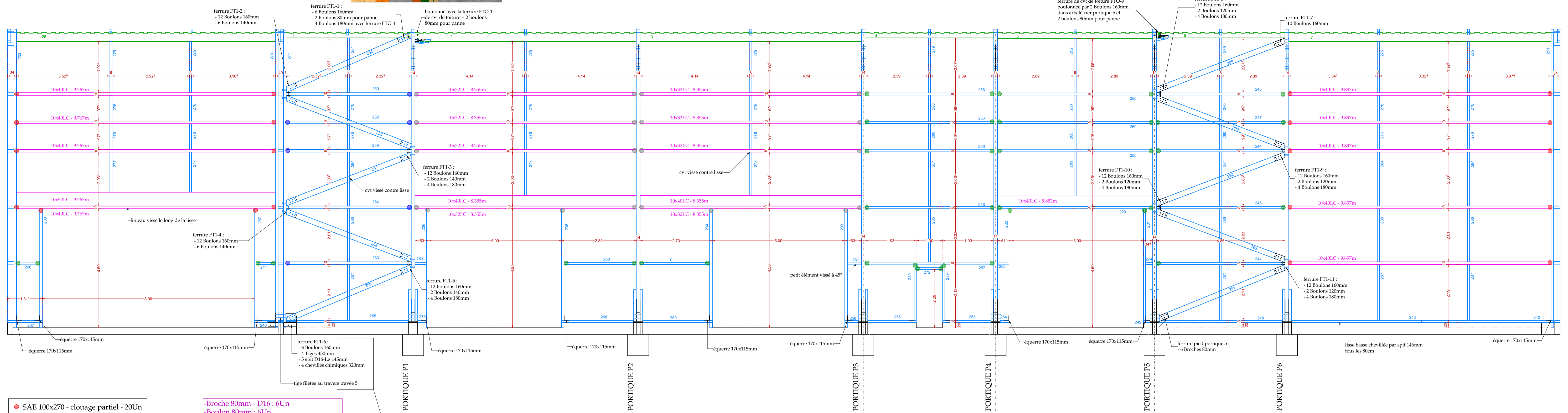
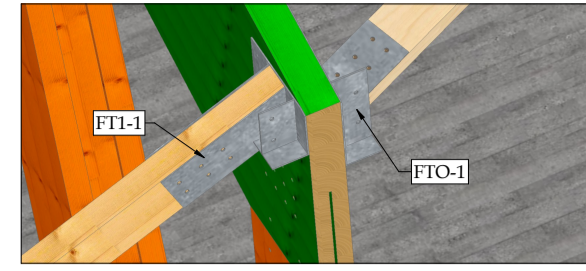
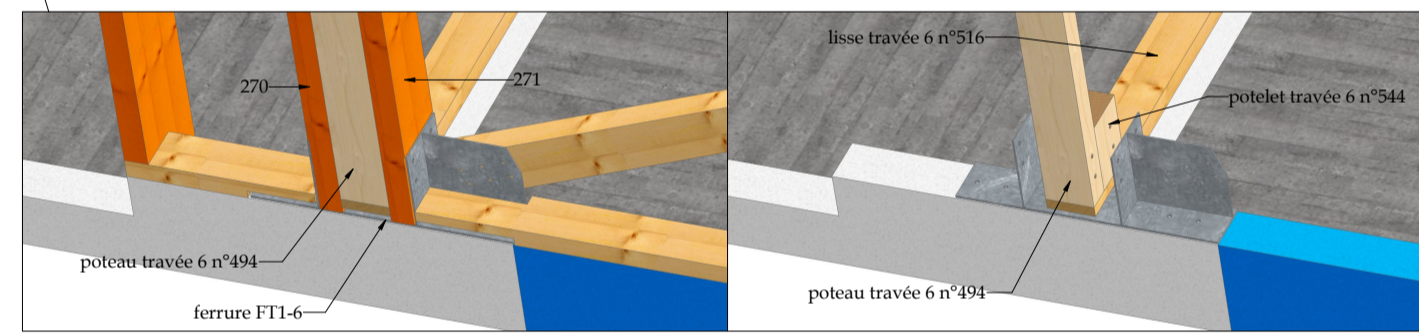


Travée 1



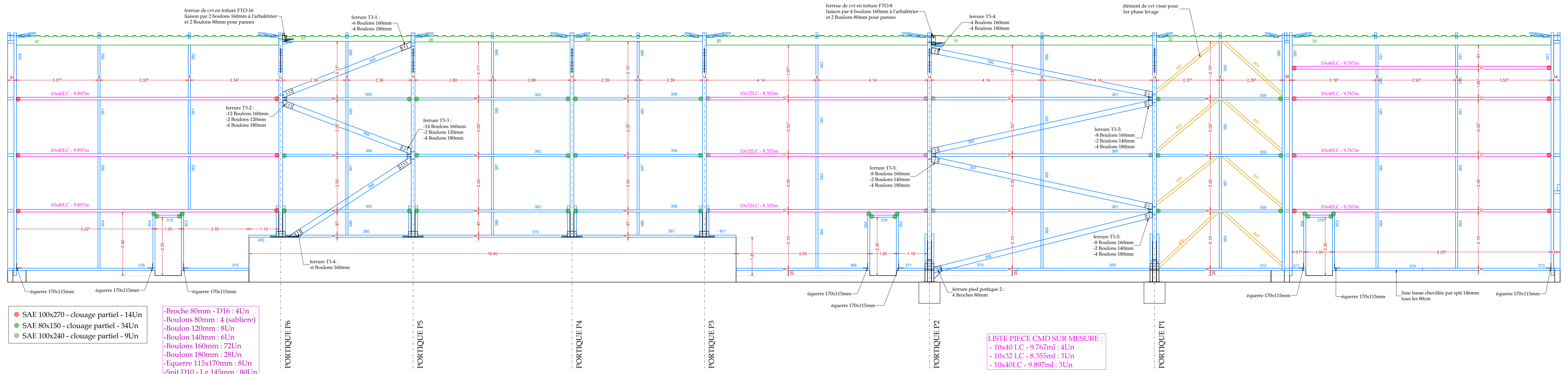
- SAE 100x270 - clouage partiel - 20Un
- SAE 80x150 - clouage partiel - 38Un
- SAE 100x200 - clouage partiel - 6Un
- SAE 100x240 - clouage partiel - 20Un

- Broche 80mm - D16 : 6Un
- Boulon 80mm : 6Un
- Boulon 120mm : 8Un
- Boulon 140mm : 16Un
- Boulons 160mm : 120Un
- Boulons 180mm : 28Un
- Tiges 450mm : 4Un
- Equerres 115x170mm : 12Un
- Spit D10 - Lg 145mm : 50Un
- Spit D16 - Lg 145mm : 5Un
- Cheville chimique D16 - Lg 320mm : 4Un



- LISTE PIECE CMD SUR MESURE :
- 10x40 LC - 9.767ml : 4Un
 - 10x52 LC - 9.767ml : 1Un
 - 10x32 LC - 8.355ml : 8Un
 - 10x40 LC - 8.355ml : 2Un
 - 10x40 LC - 5.852ml : 1Un
 - 10x40 LC - 9.897ml : 5Un

Travée 3



- SAE 100x270 - clouage partiel - 14Un
- SAE 80x150 - clouage partiel - 34Un
- SAE 100x240 - clouage partiel - 9Un

- Broche 80mm - D16 : 4Un
- Boulons 80mm : 4 (sabliere)
- Boulon 120mm : 8Un
- Boulon 140mm : 6Un
- Boulons 160mm : 72Un
- Boulons 180mm : 28Un
- Equerre 115x170mm : 8Un
- Spit D10 - Lg 145mm : 80Un

- LISTE PIECE CMD SUR MESURE :
- 10x40 LC - 9.767ml : 4Un
 - 10x32 LC - 8.355ml : 3Un
 - 10x40 LC - 9.897ml : 3Un