

# AUDENCIA BUSINESS SCHOOL

Paris | Nantes | Beijing | Shenzhen

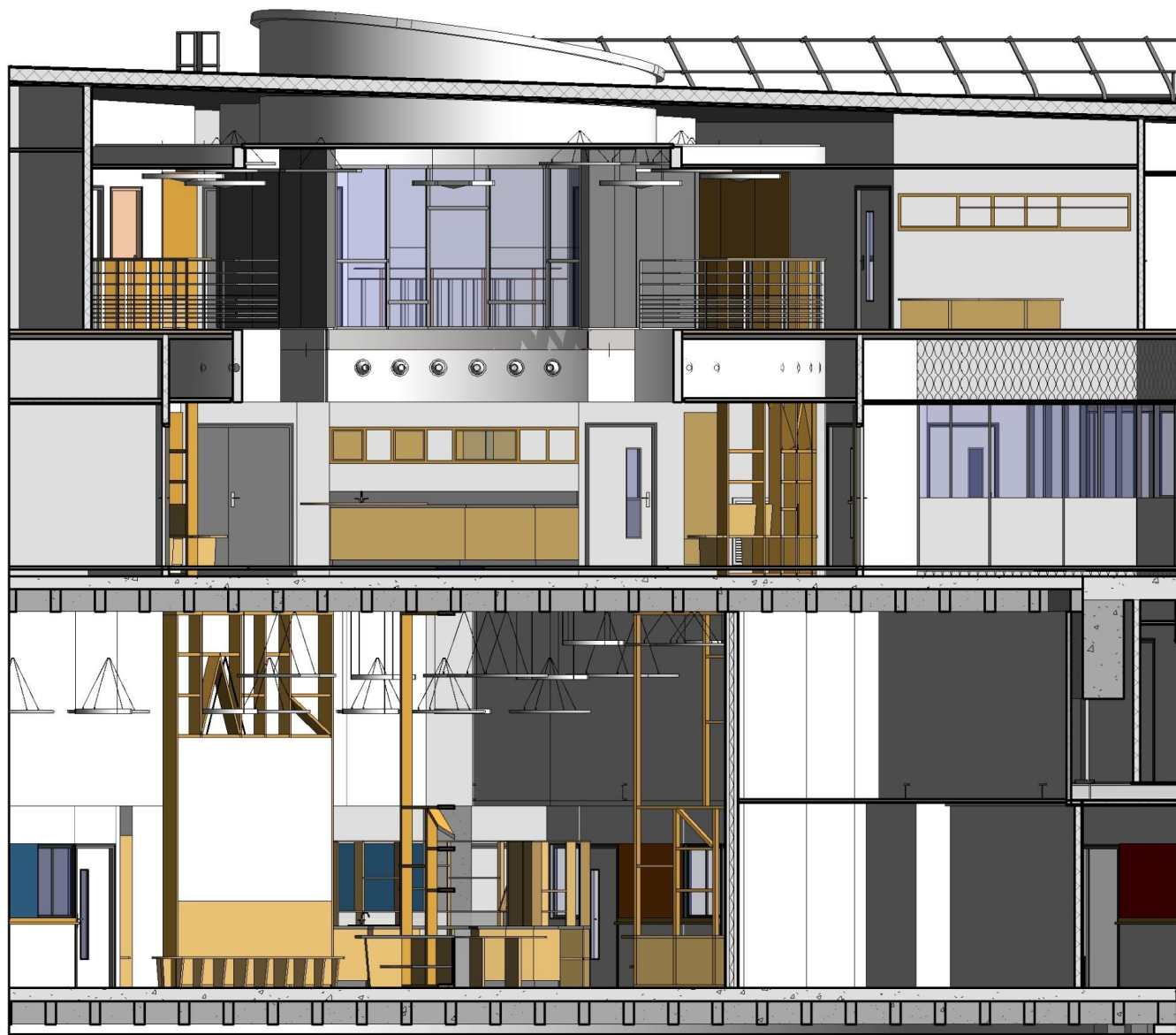
Projet

> 30.01.20

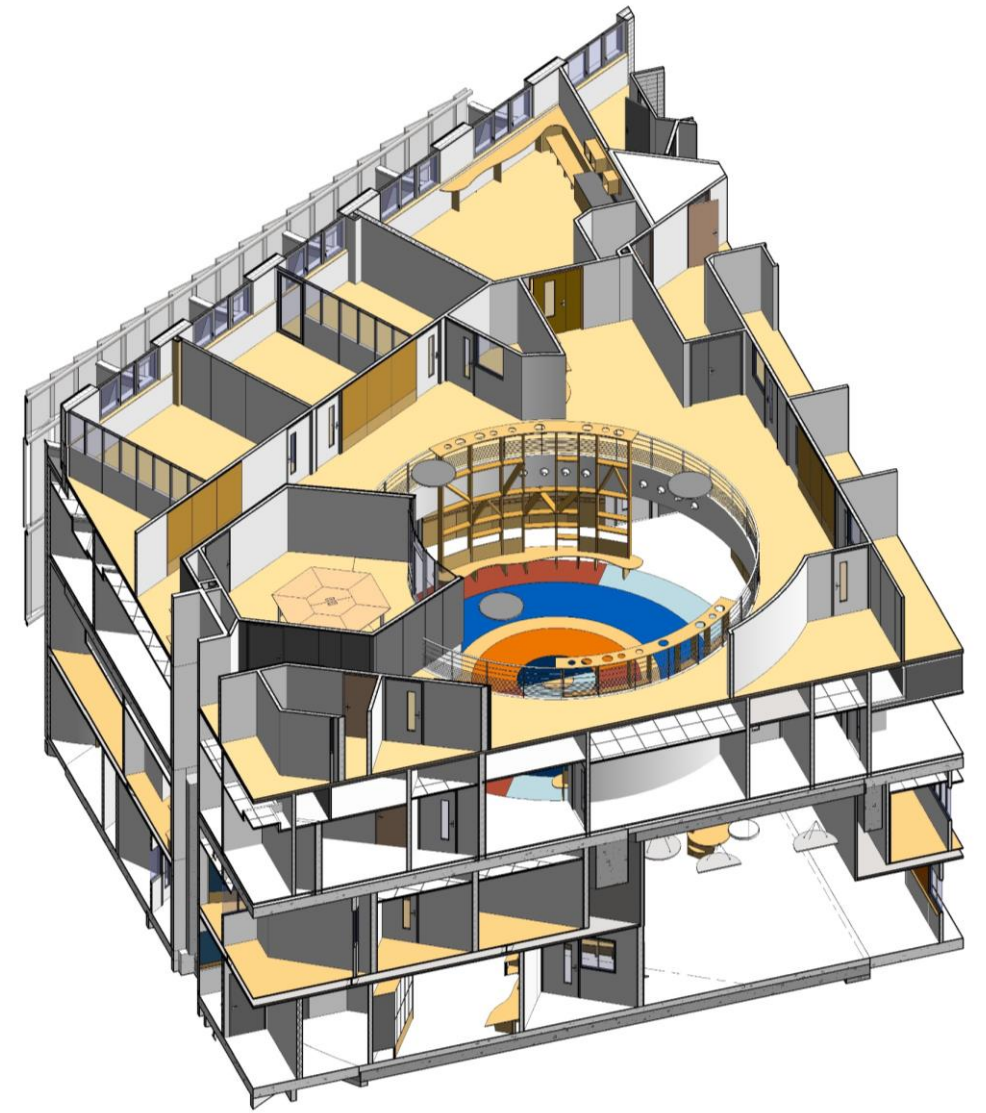
Lucid&bottin architecture Intérieure



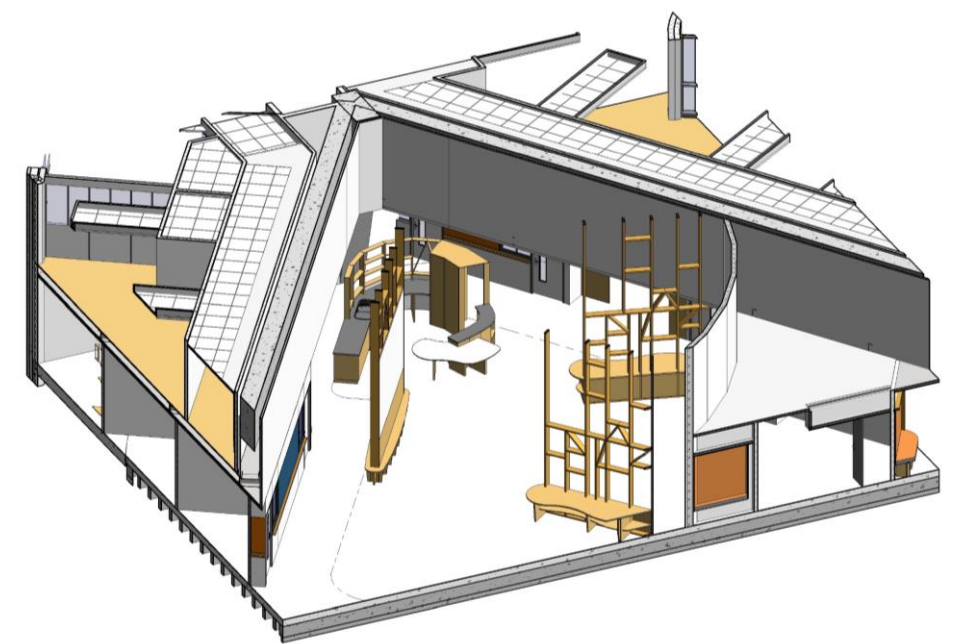




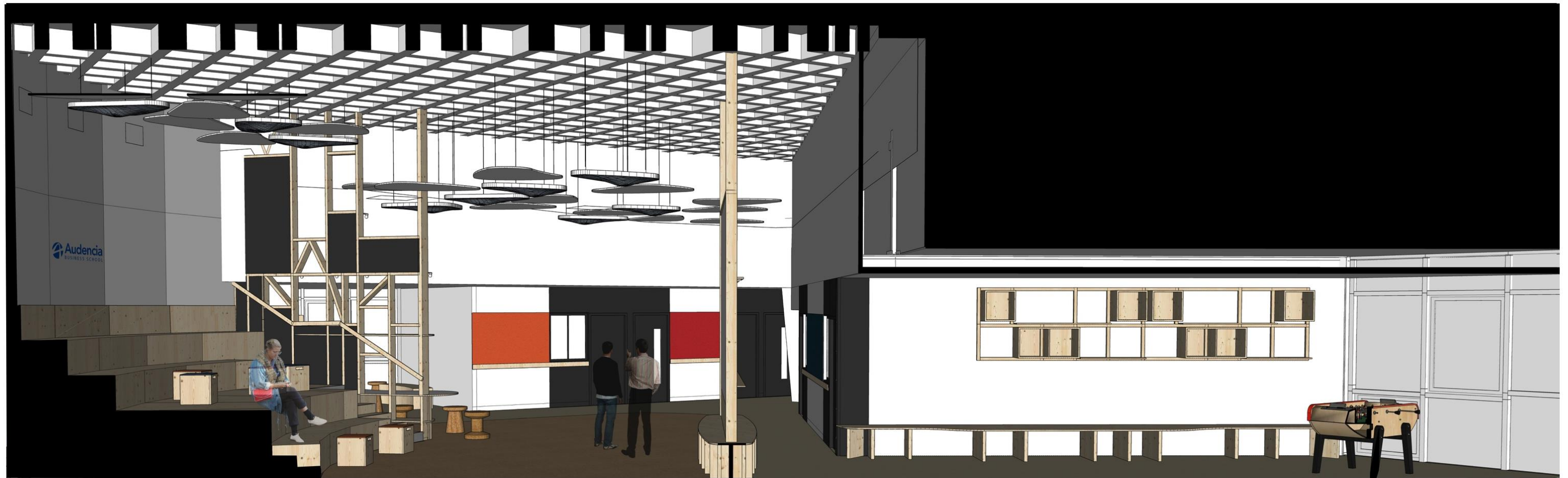
COUPE



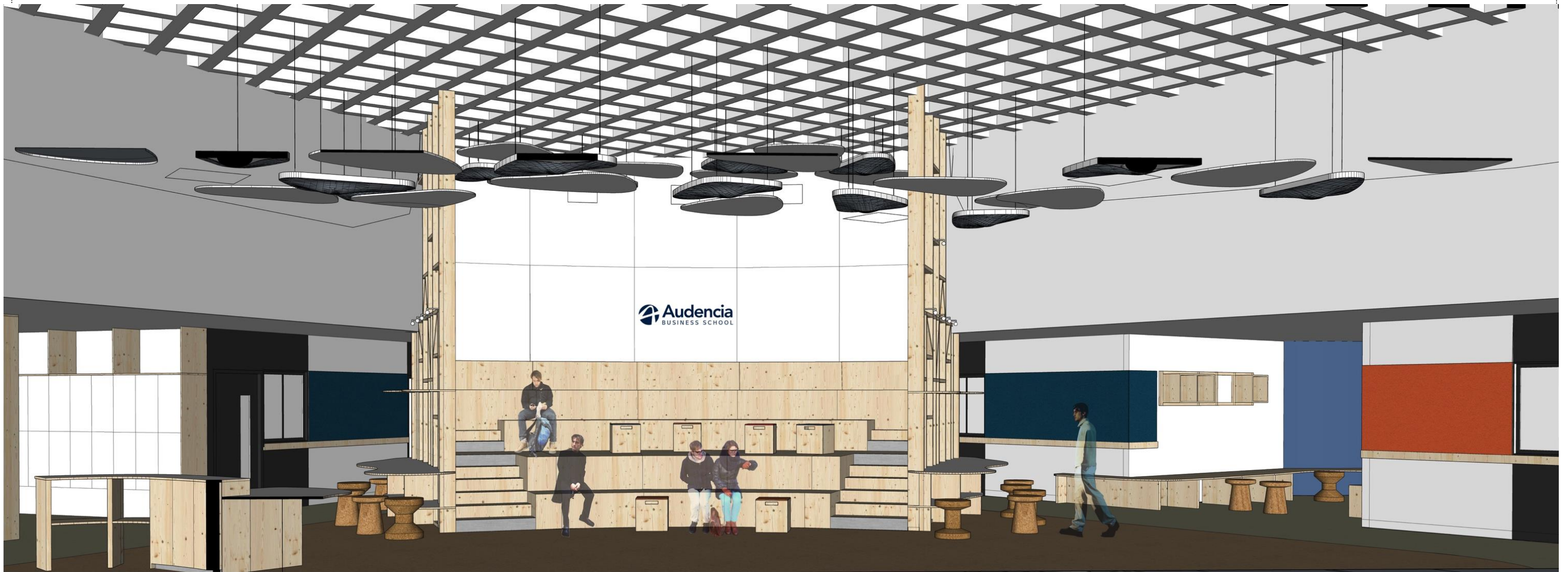
AXONOMETRIE R+4/R+5



AXONOMETRIE R+2







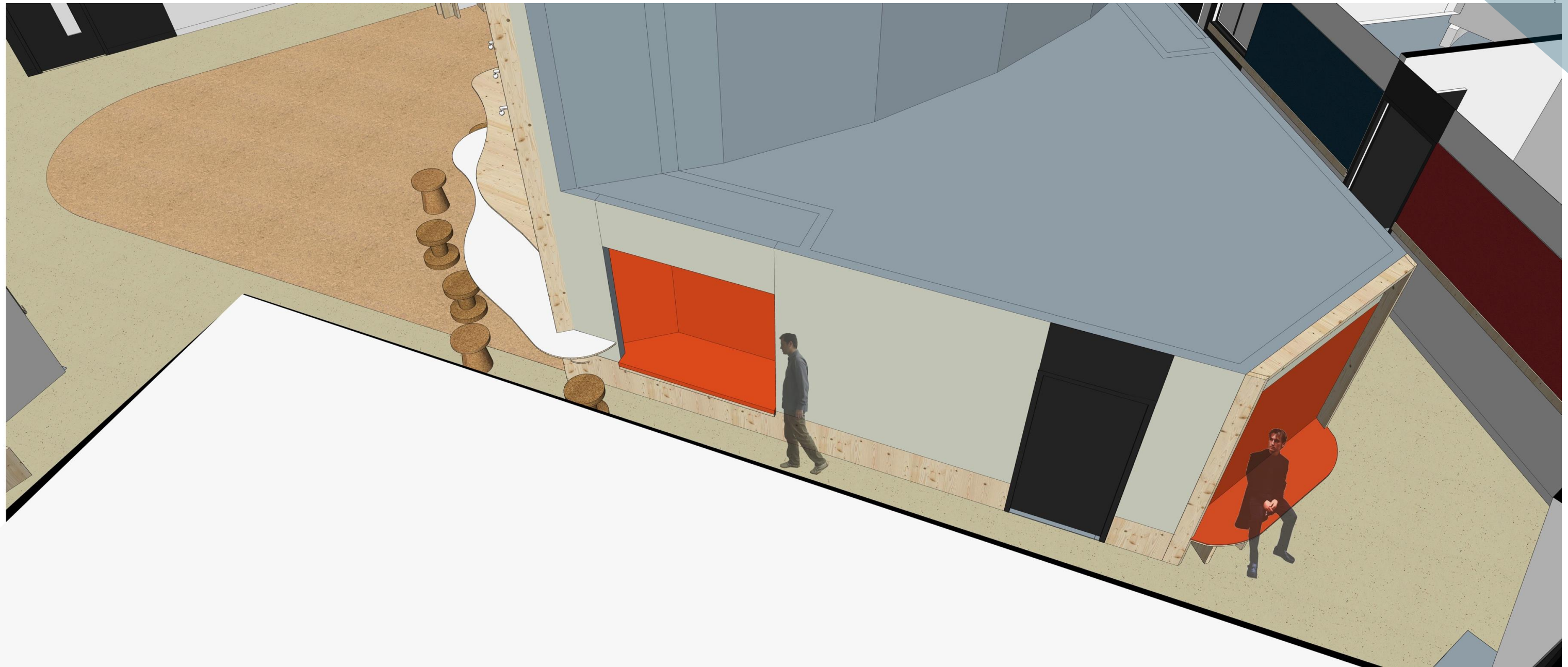


# 3D - R+2





# 3D - R+2



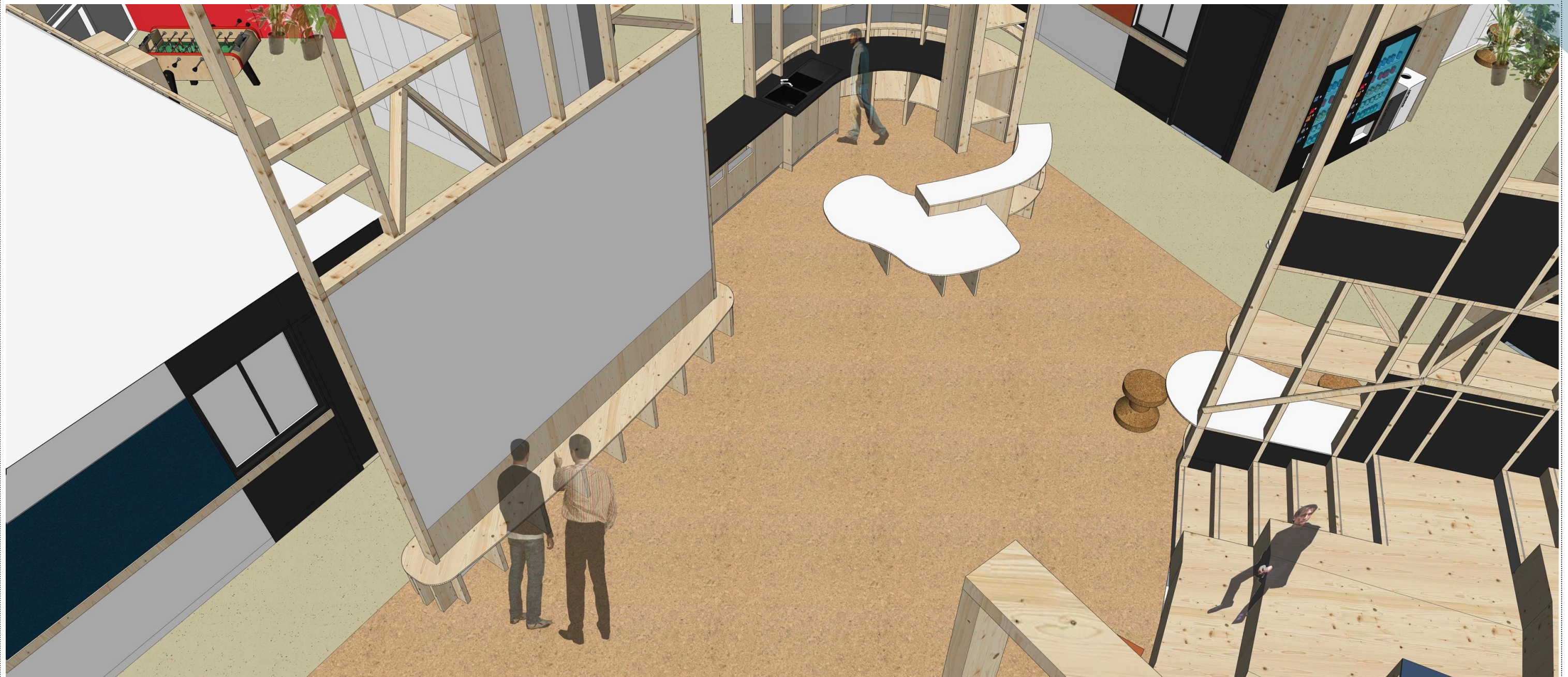


# 3D - R+2





# 3D - R+2



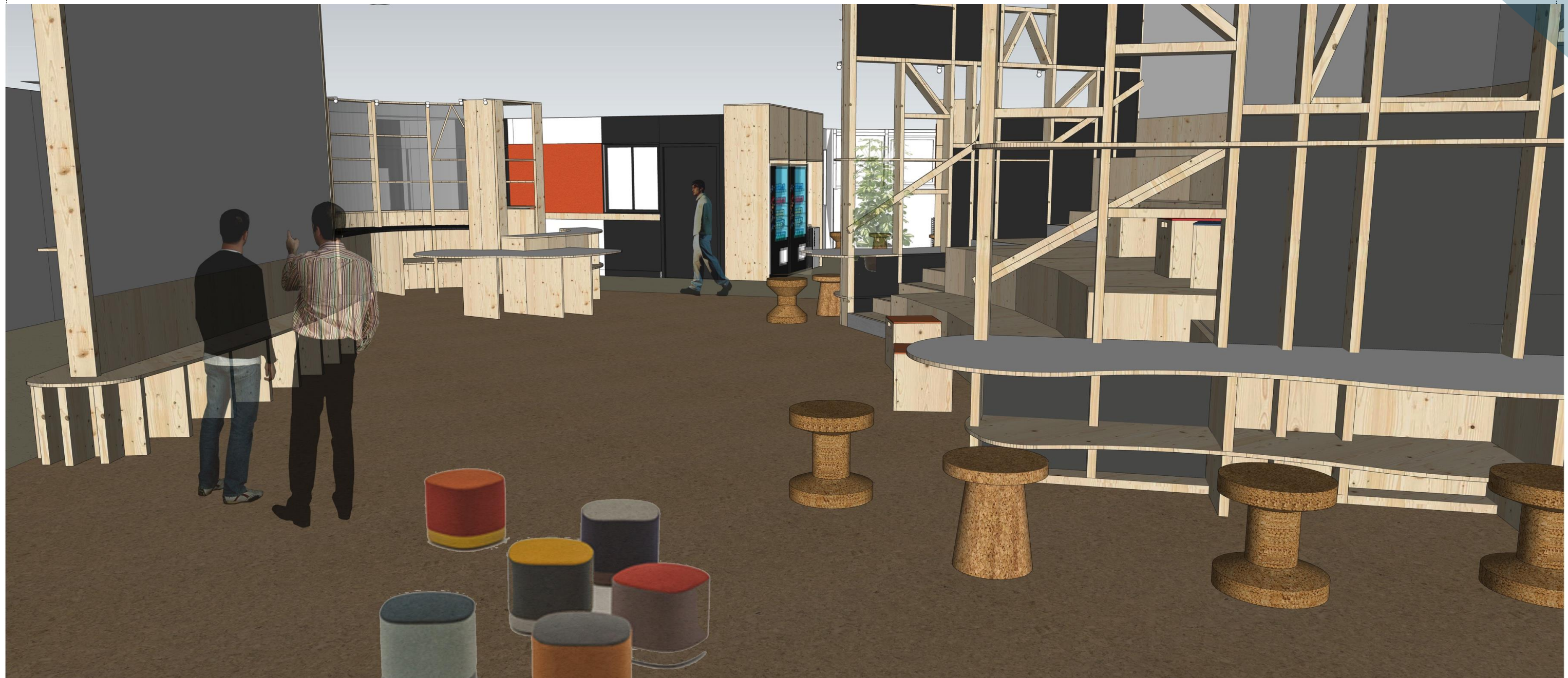


# 3D - R + 2





# 3D - R+2





# 3D - R + 2





# 3D - R + 3



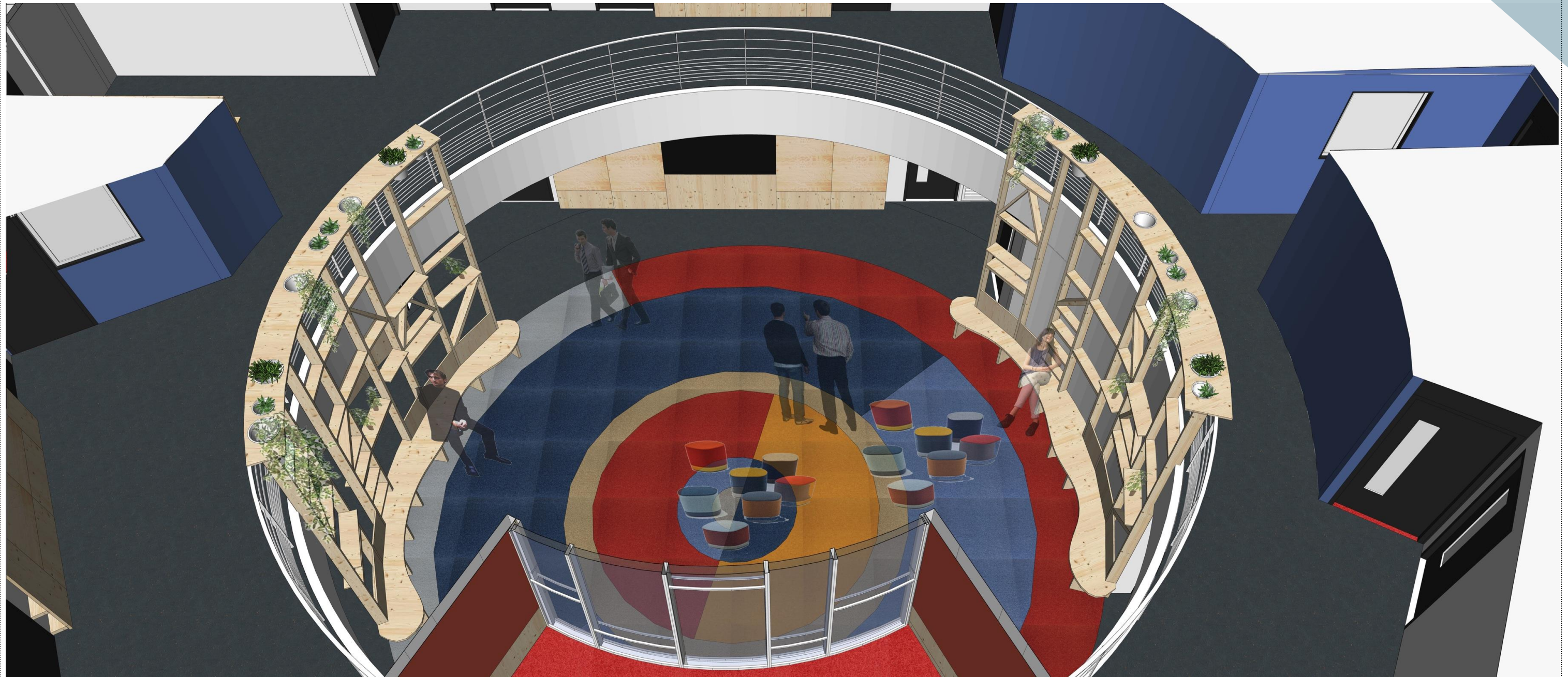


# 3D - R + 3





# 3D - R + 4 / 5





# 3D - R + 4 / 5

