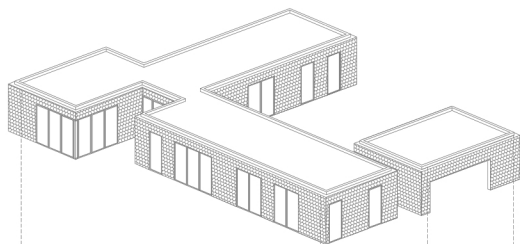
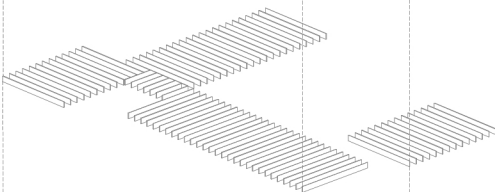


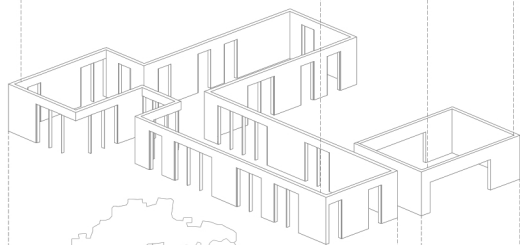
* bardeaux de terre cuite
+ menuiseries bois mélèze



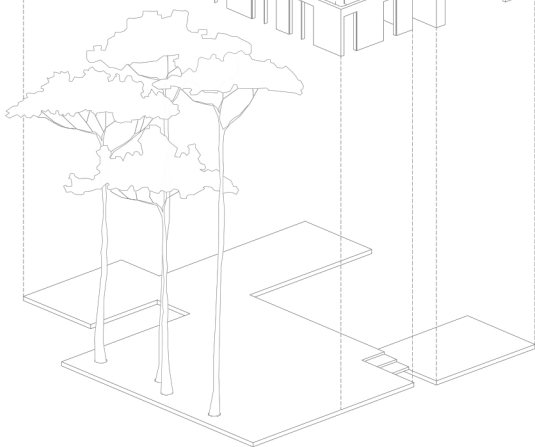
* charpente bois



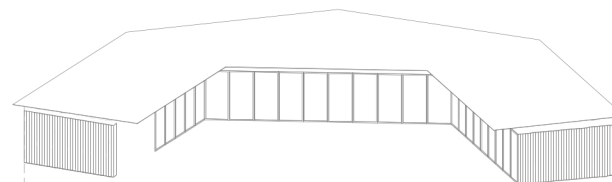
* système SANOMUR
(panneaux fibres lin/bois
+ poteaux bois)



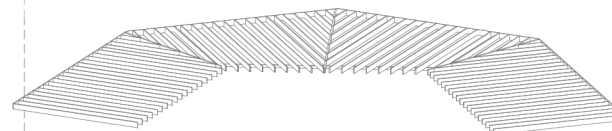
* dalle béton



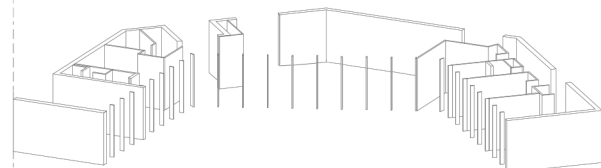
* bardage mélèze pré-vieilli
+ menuiseries bois mélèze



* charpente bois



* système SANOMUR
(panneaux fibres lin/bois
+ poteaux bois)



* dalle béton

