

Orly

Reconstruction de la Crèche de la Cloche

Carnet de détail

D.O.E.

LOT 2 : Structure-Couverture-Menuiserie

Adresse du projet:

Crèche du parc de la Cloche
36-38 rue du commerce
94390 ORLY

MAITRE D'OUVRAGE:

Conseil Général du Val de Marne Direction des bâtiments

10 Chemin des bassins
94054 CRETEIL CEDEX

Tél : 01.43.99.81.95
Port : 06.20.67.39.65

MAITRE D'OEUVRE:

DEPARTEMENT DU VAL DE MARNE BATIMENTS DEPARTEMENTAUX

10 Chemin des bassins
94054 CRETEIL CEDEX

Tél : 01.43.99.82.04
Port : 06.20.67.40.12
@ : isabelle.mehaute@valdemarne.fr

BUREAU DE CONTROLE:

QUALICONSLT

127 chemin des Bassins
94035 CRETEIL CEDEX

Tél : 01.49.56.06.00
Port : 06.73.28.05.32
@ : philippe.lefrancois@qualiconsult.fr

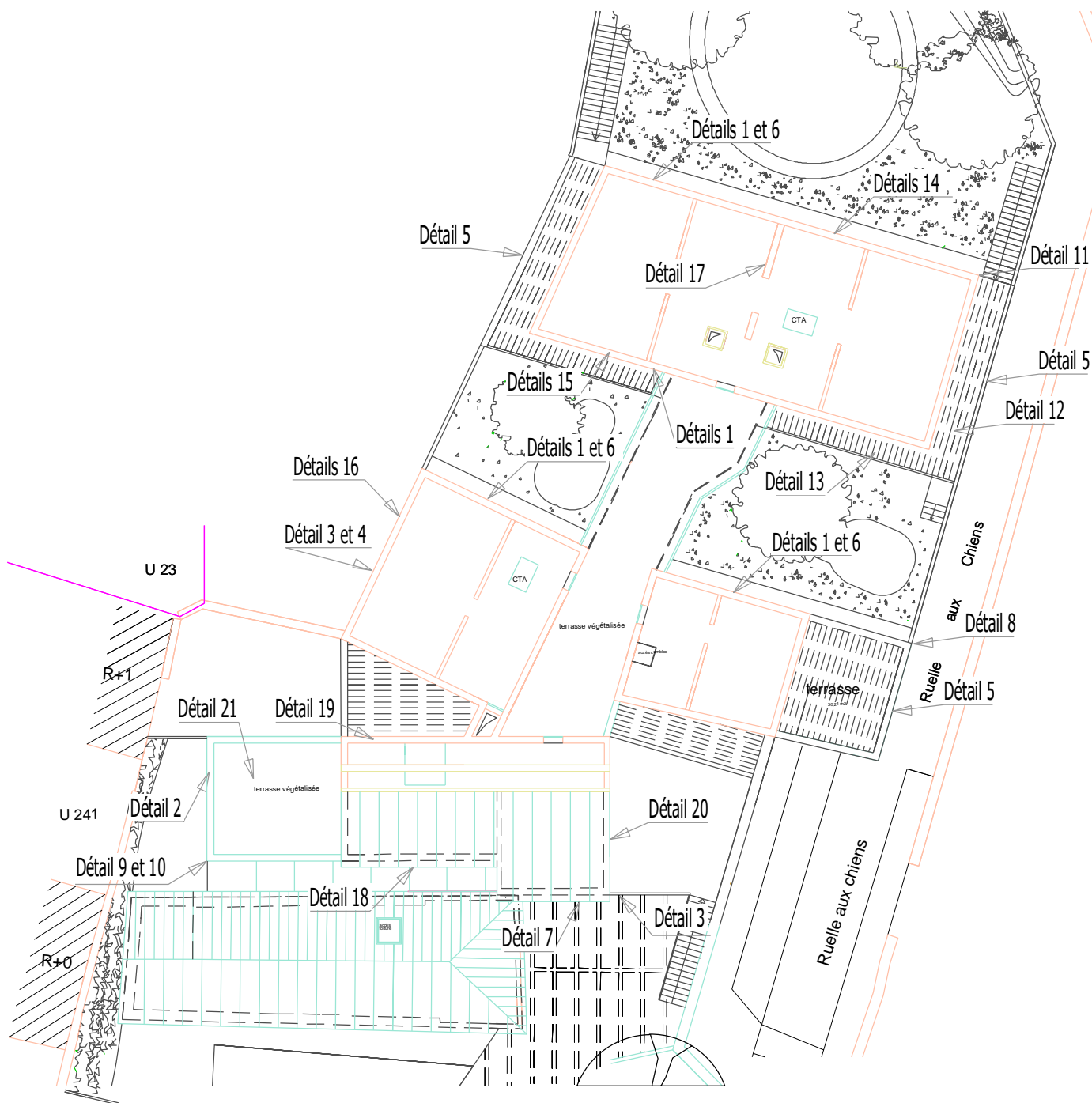
création le : 25-01-2019

dessiné par:
Doudet Fabien

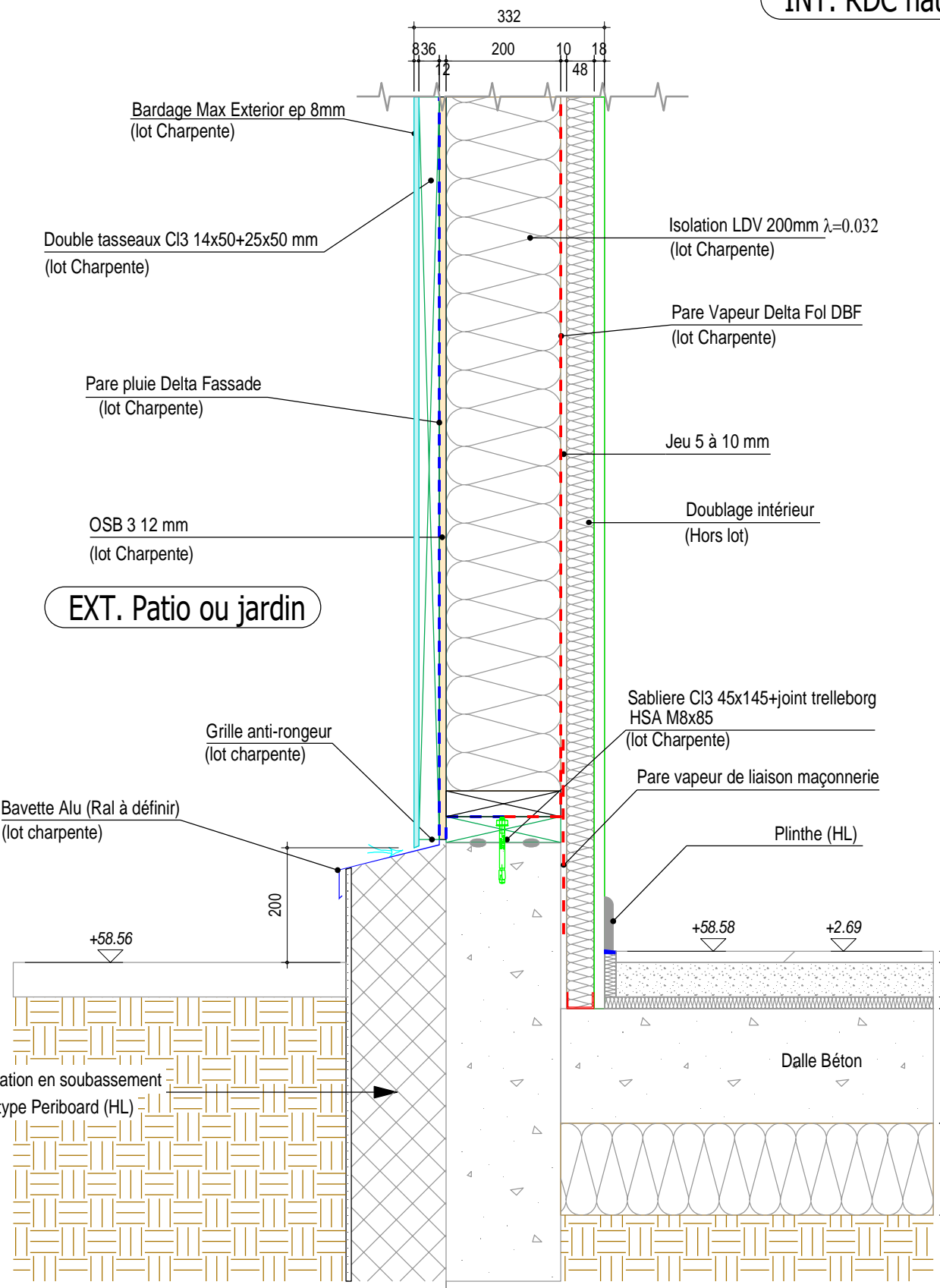
vérifié par:
Roulette Laurent

Chargé d'affaires - conducteur de travaux:
Quenouault Cyril / Doudet Fabien

PLAN N°	INDICE	DATE	MODIFICATIONS
02-a	-	21-01-2019	- Création
	a	29-03-2019	- Ajout de détail
ECHELLES:			
1/5			
1/10			



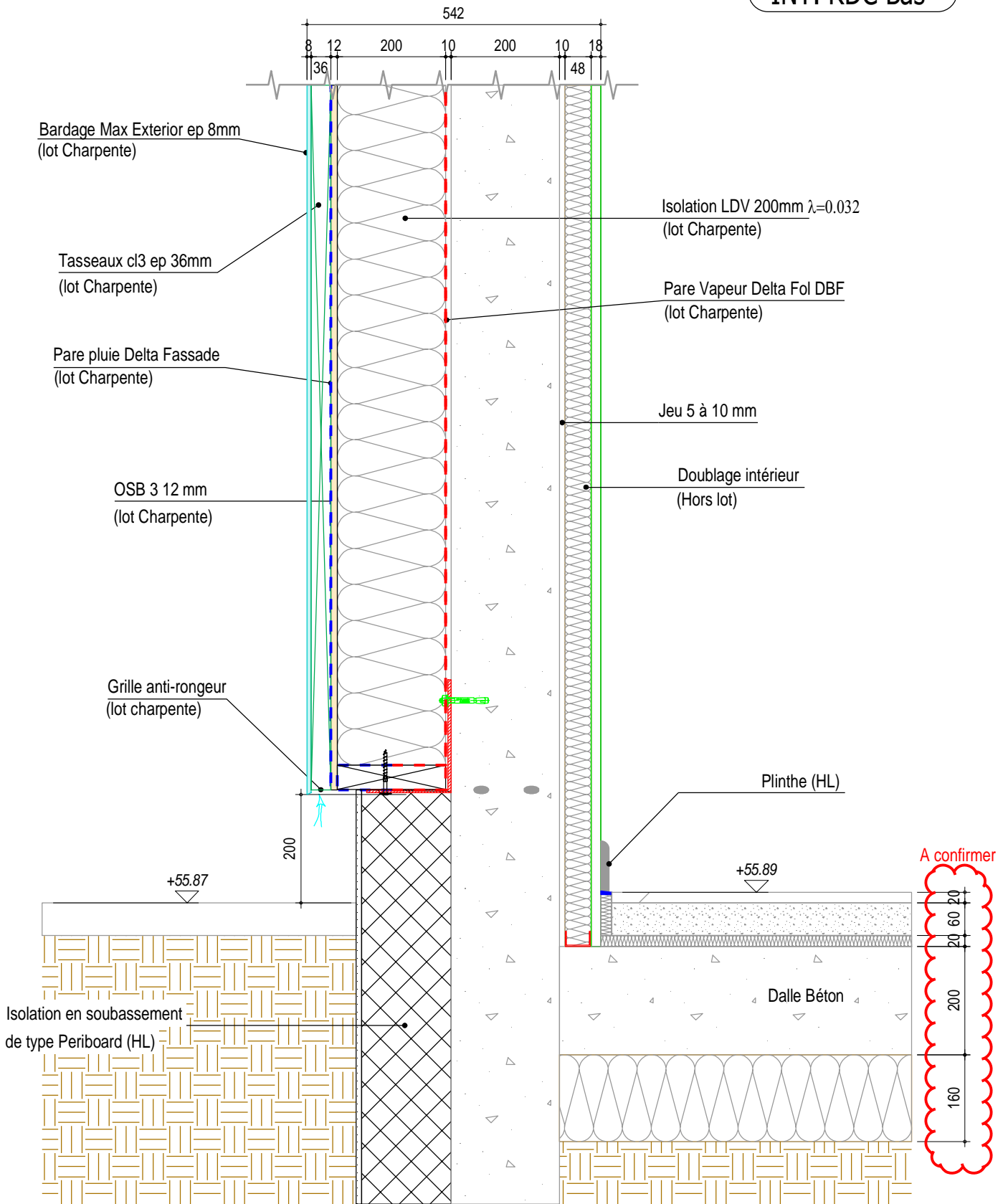
INT. RDC haut



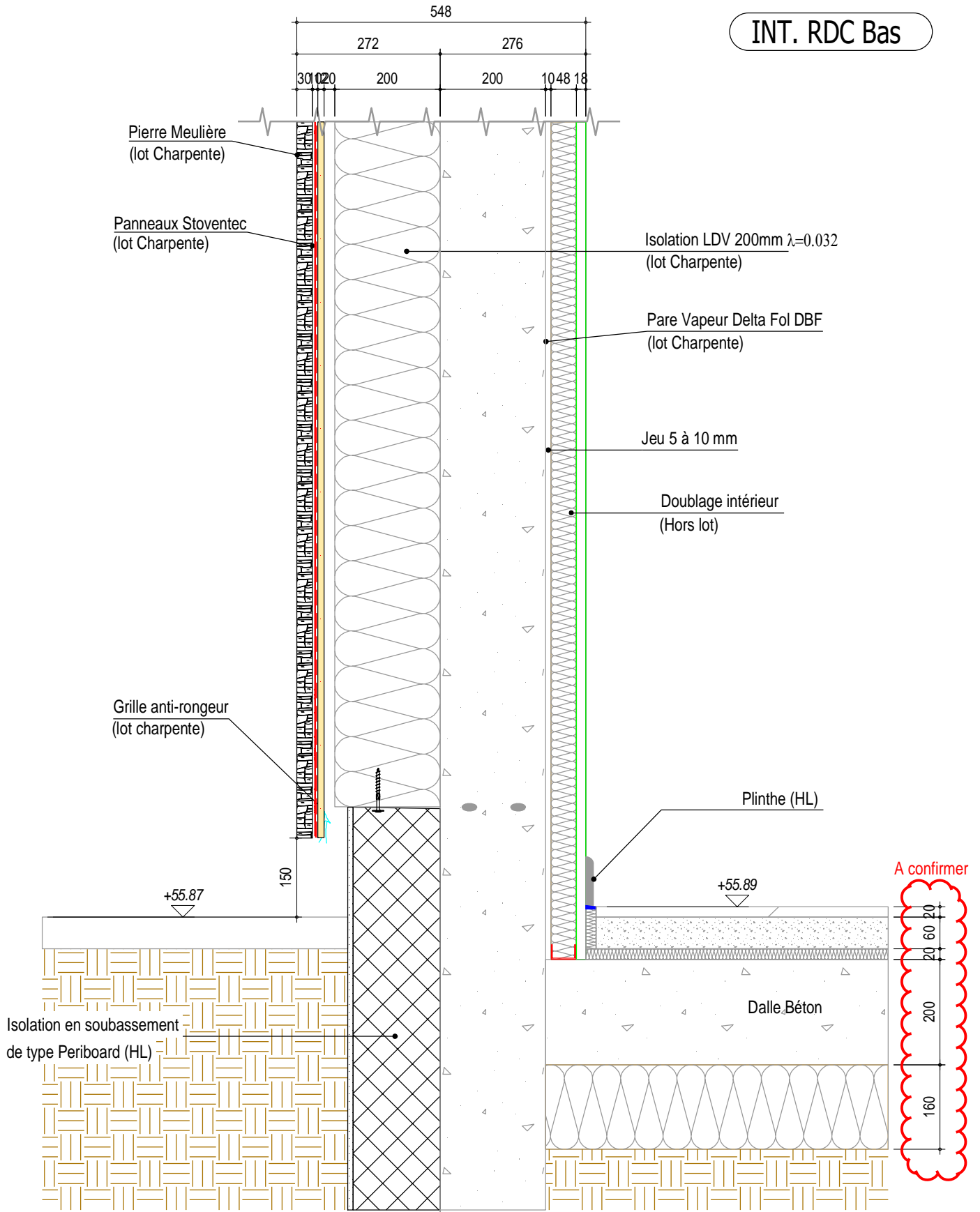
EXT. Patio ou jardin

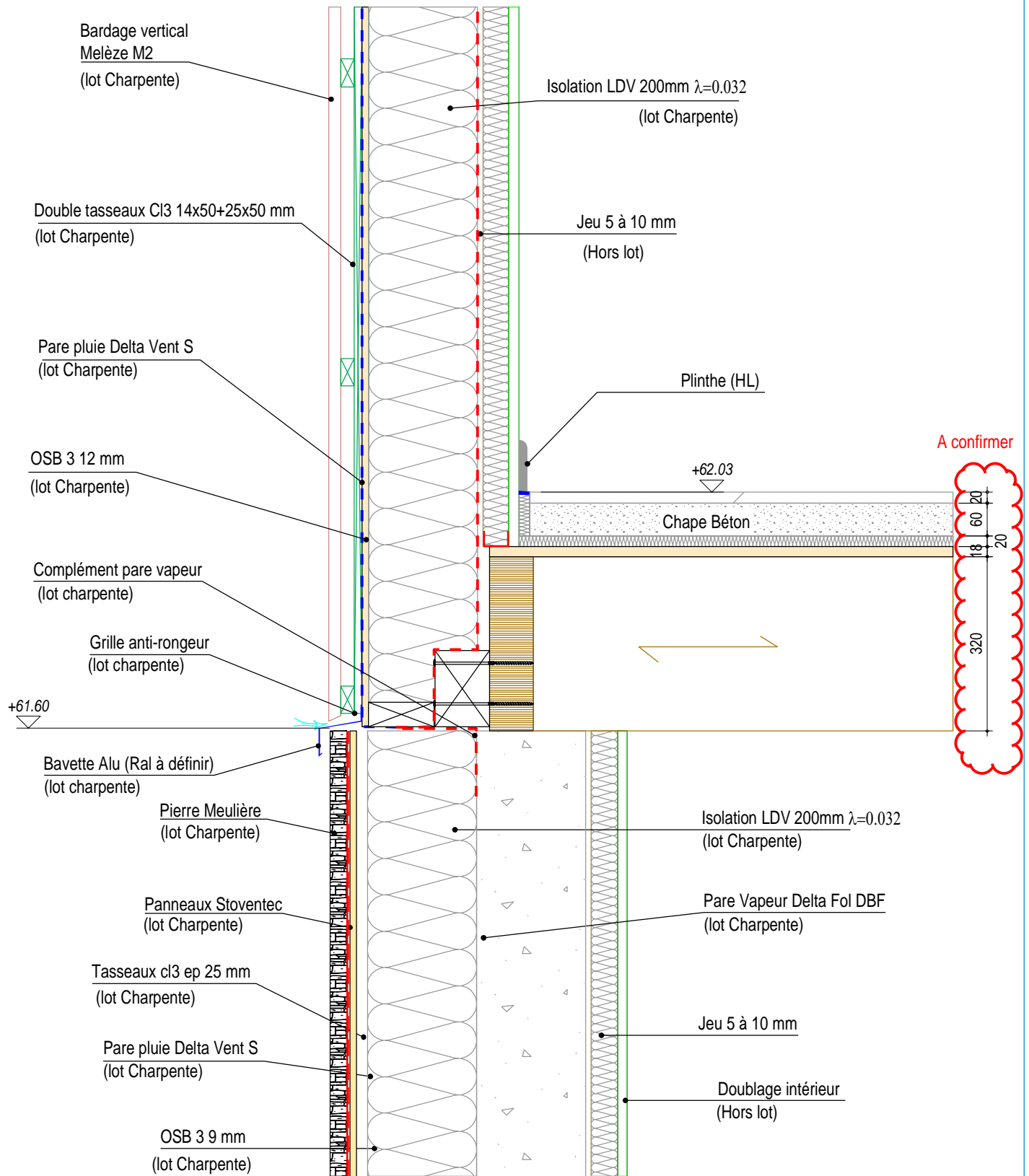
A confirmer

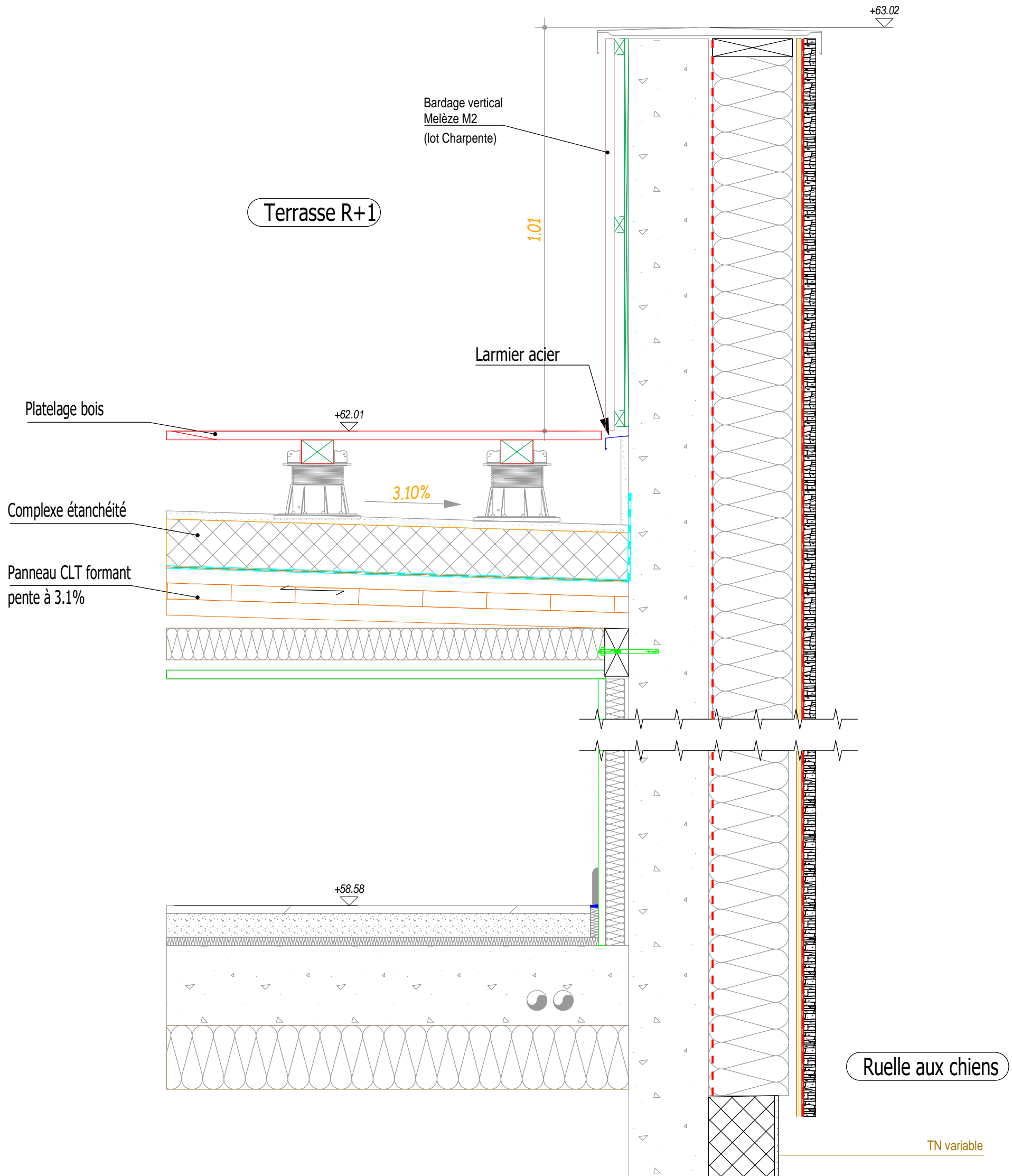
INT. RDC Bas

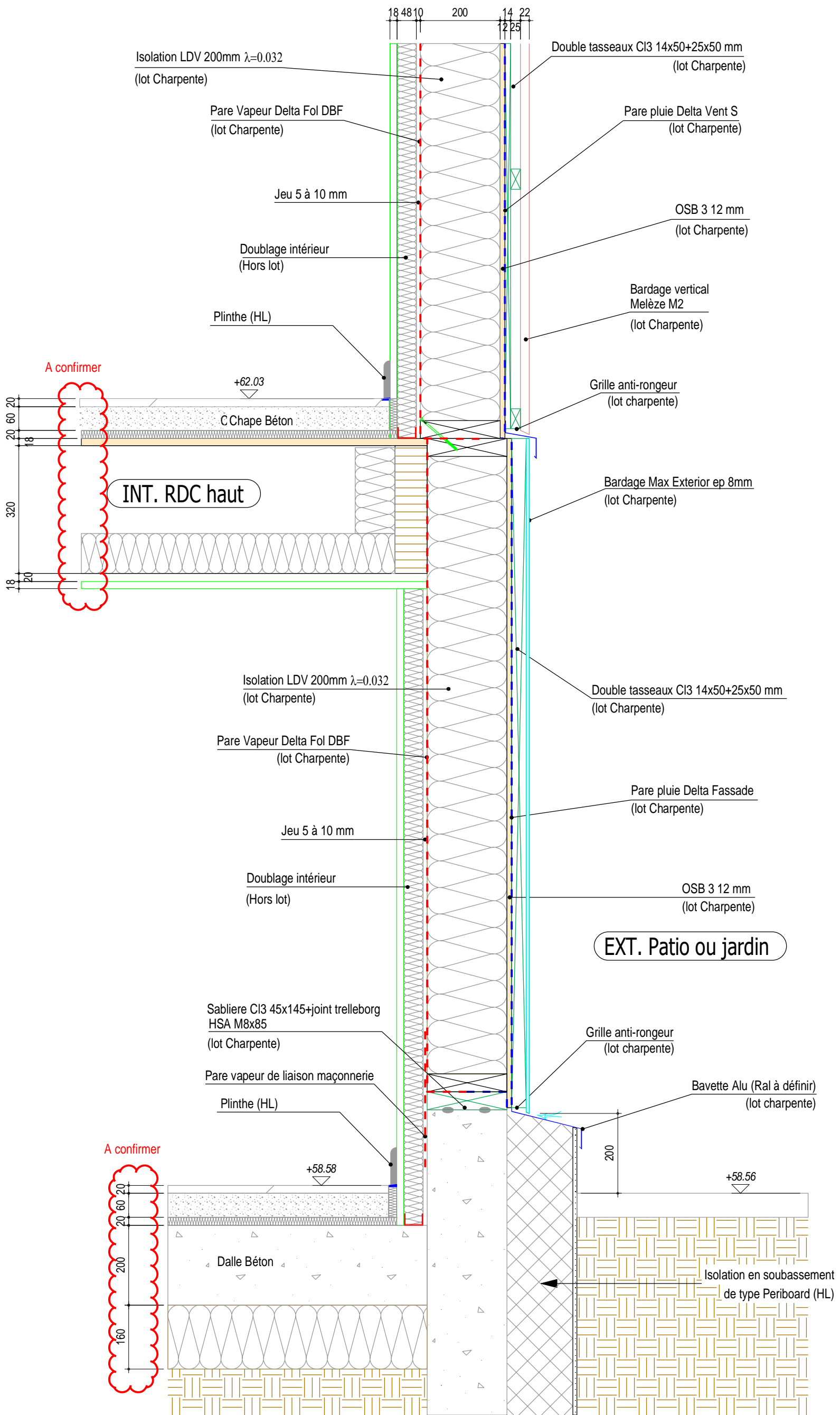


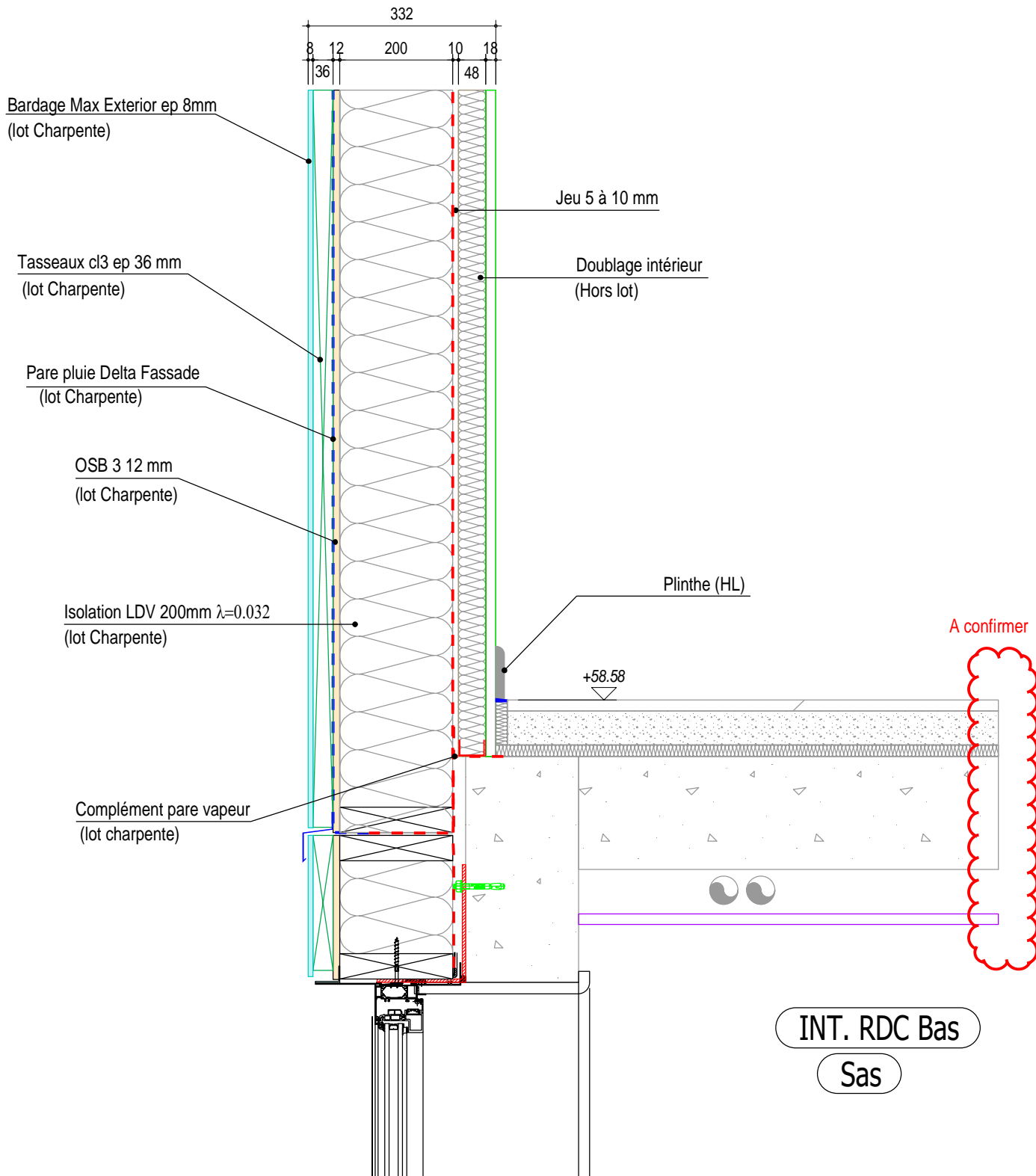
INT. RDC Bas

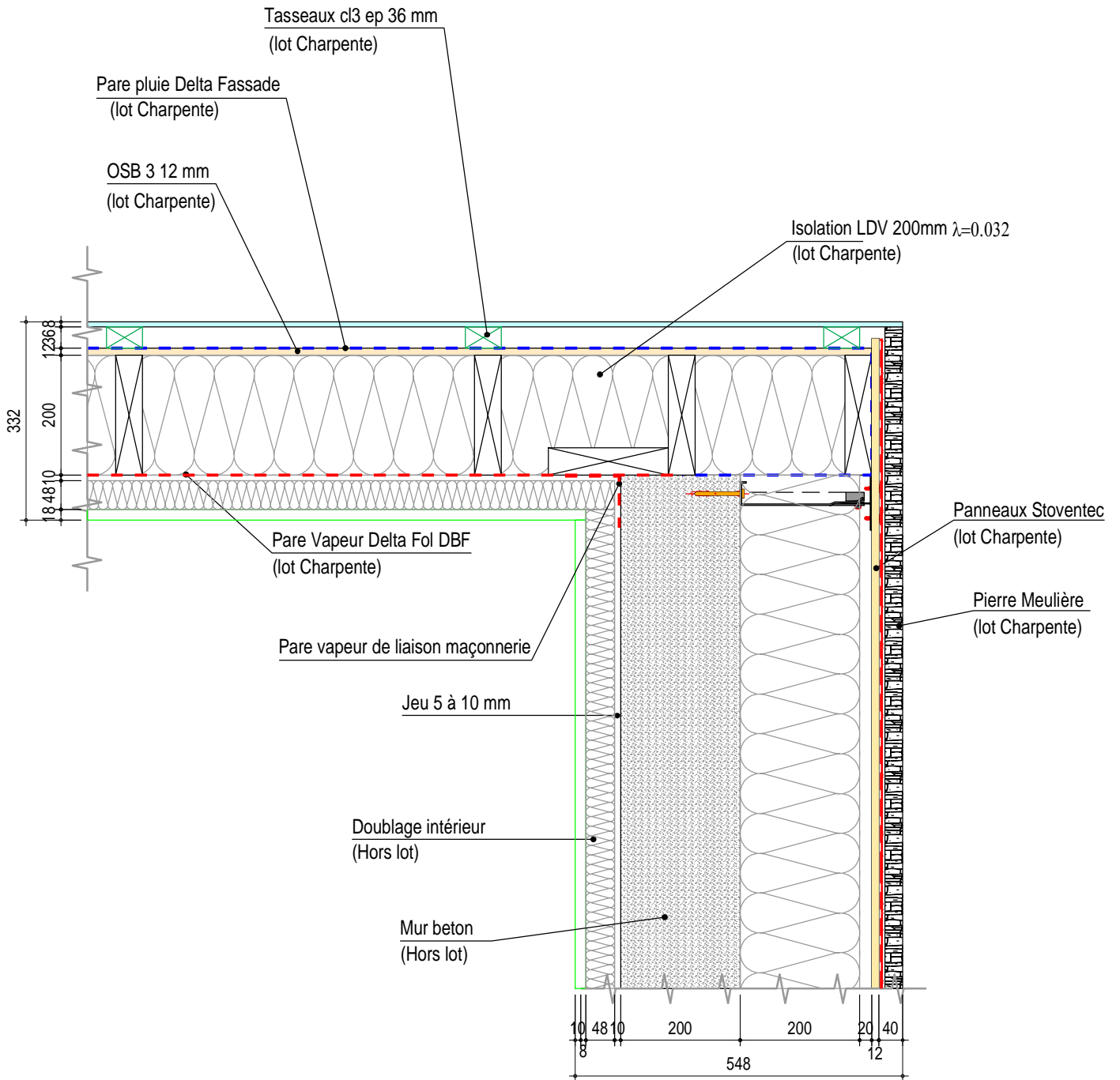


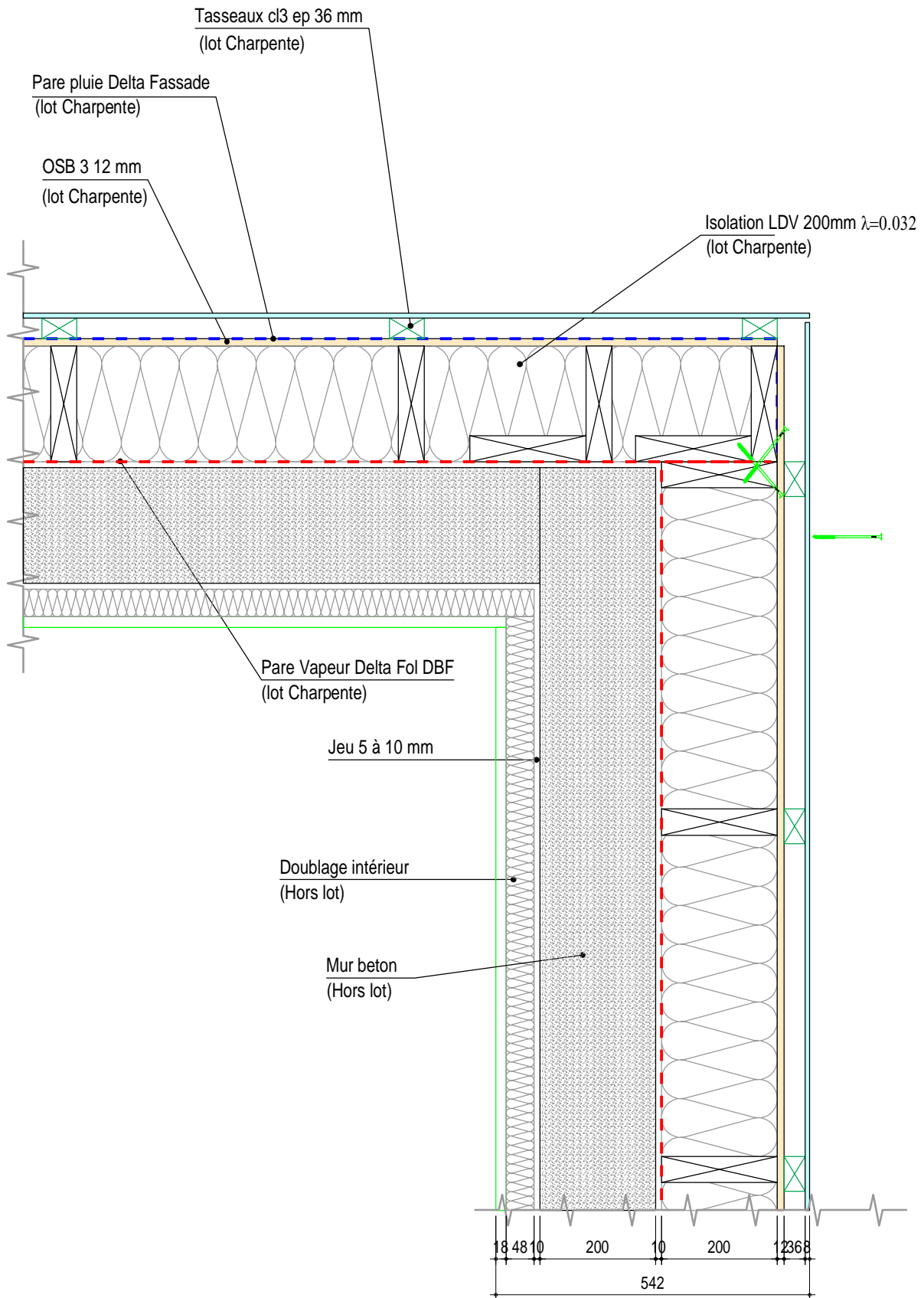


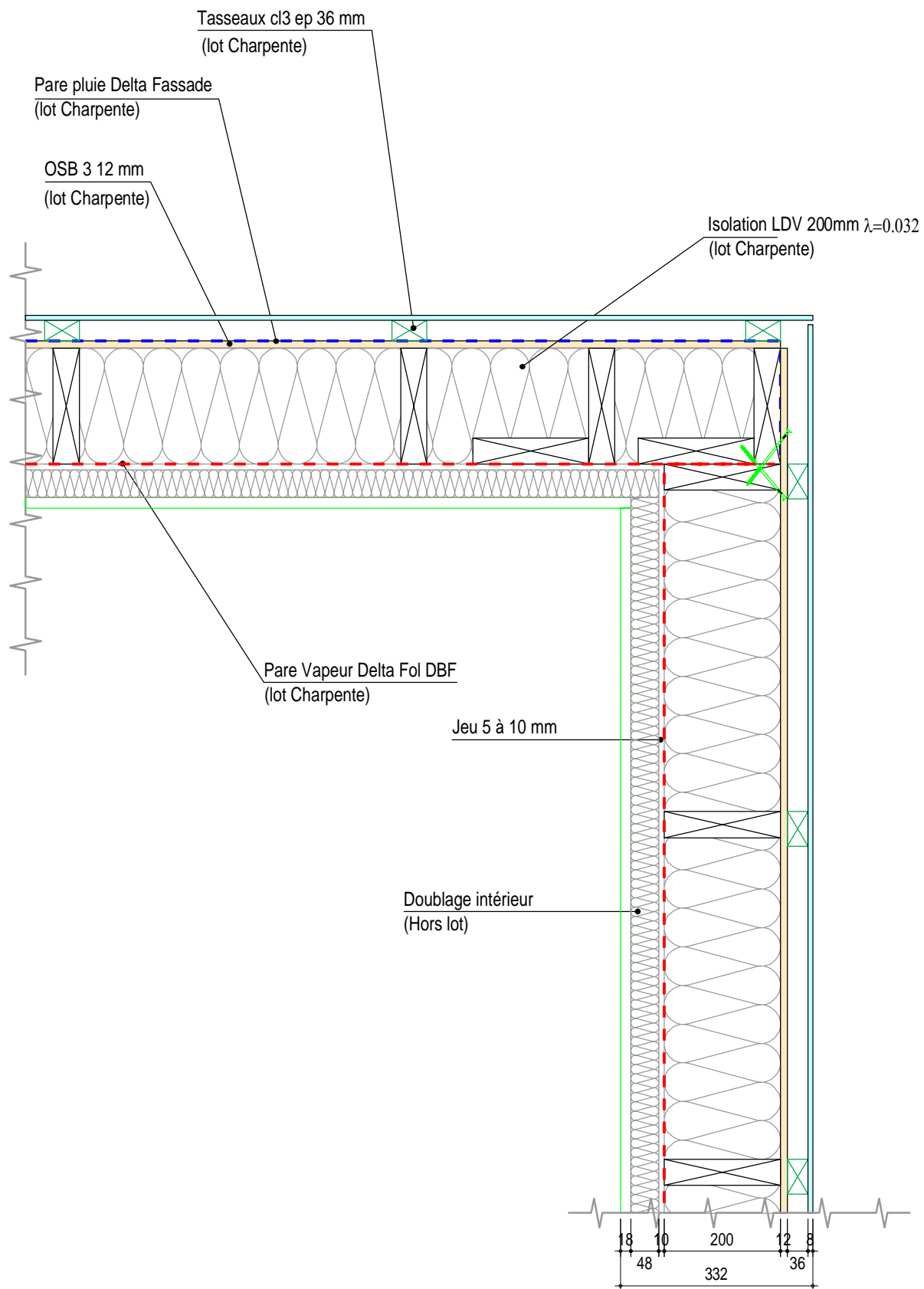


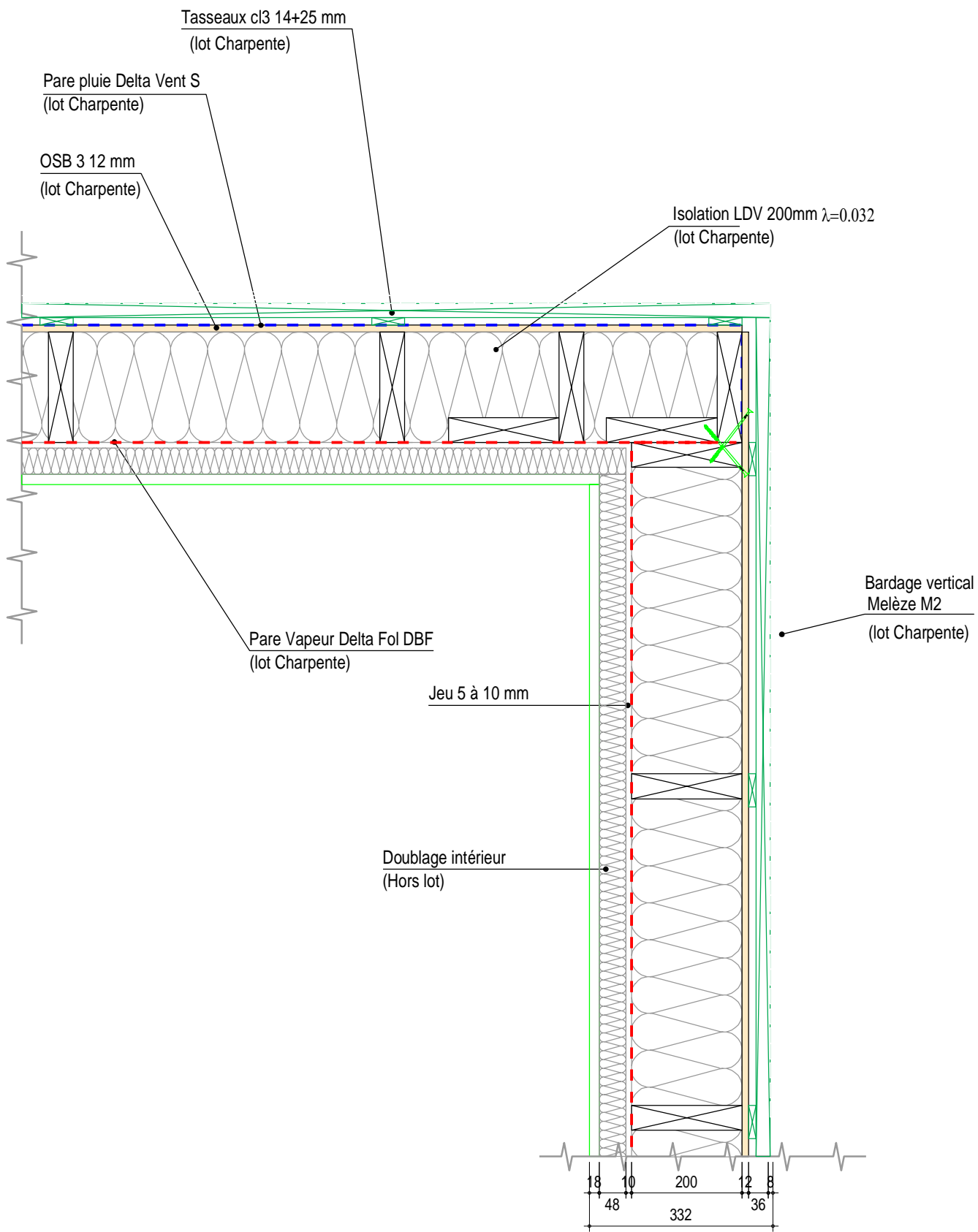


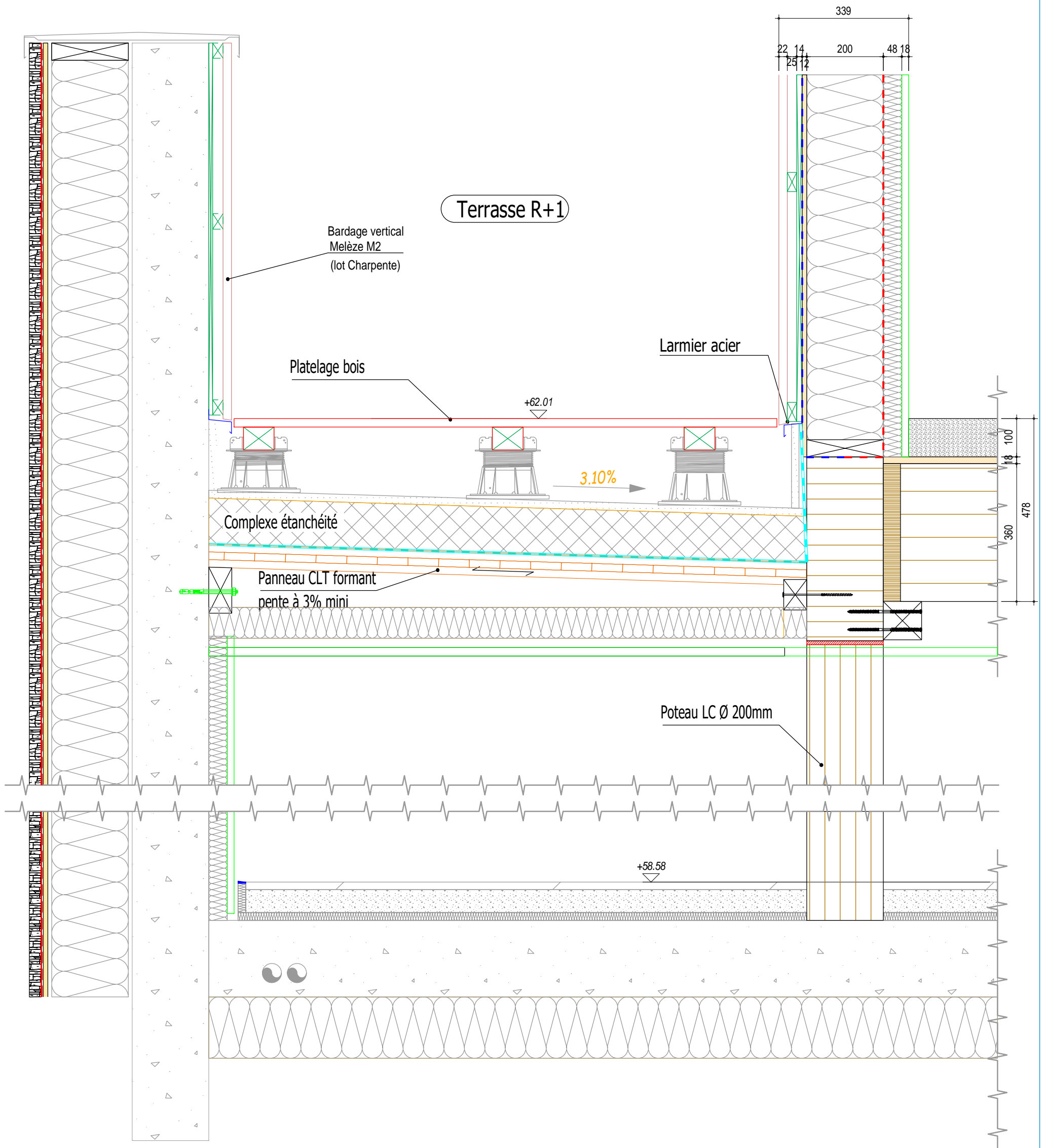


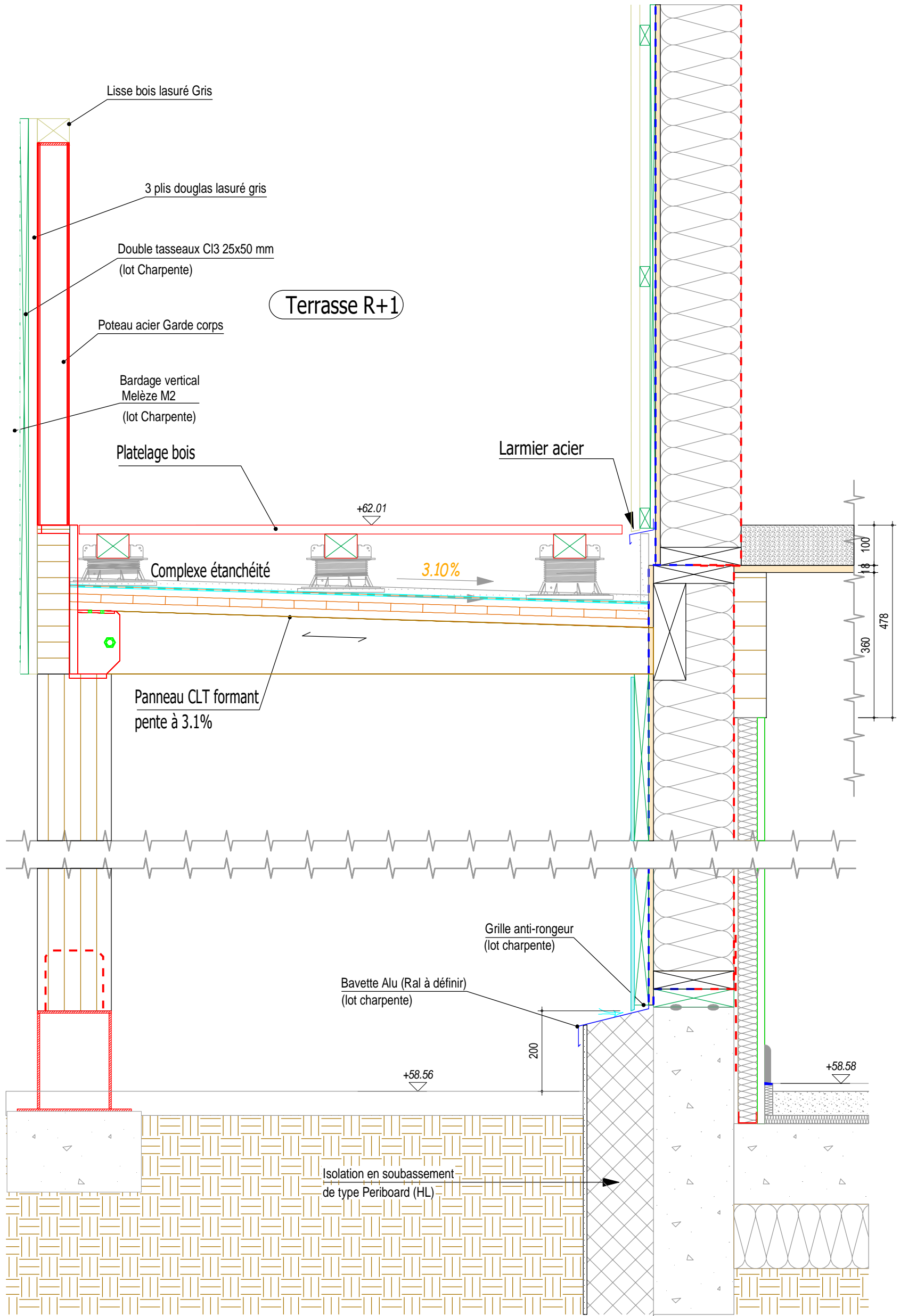


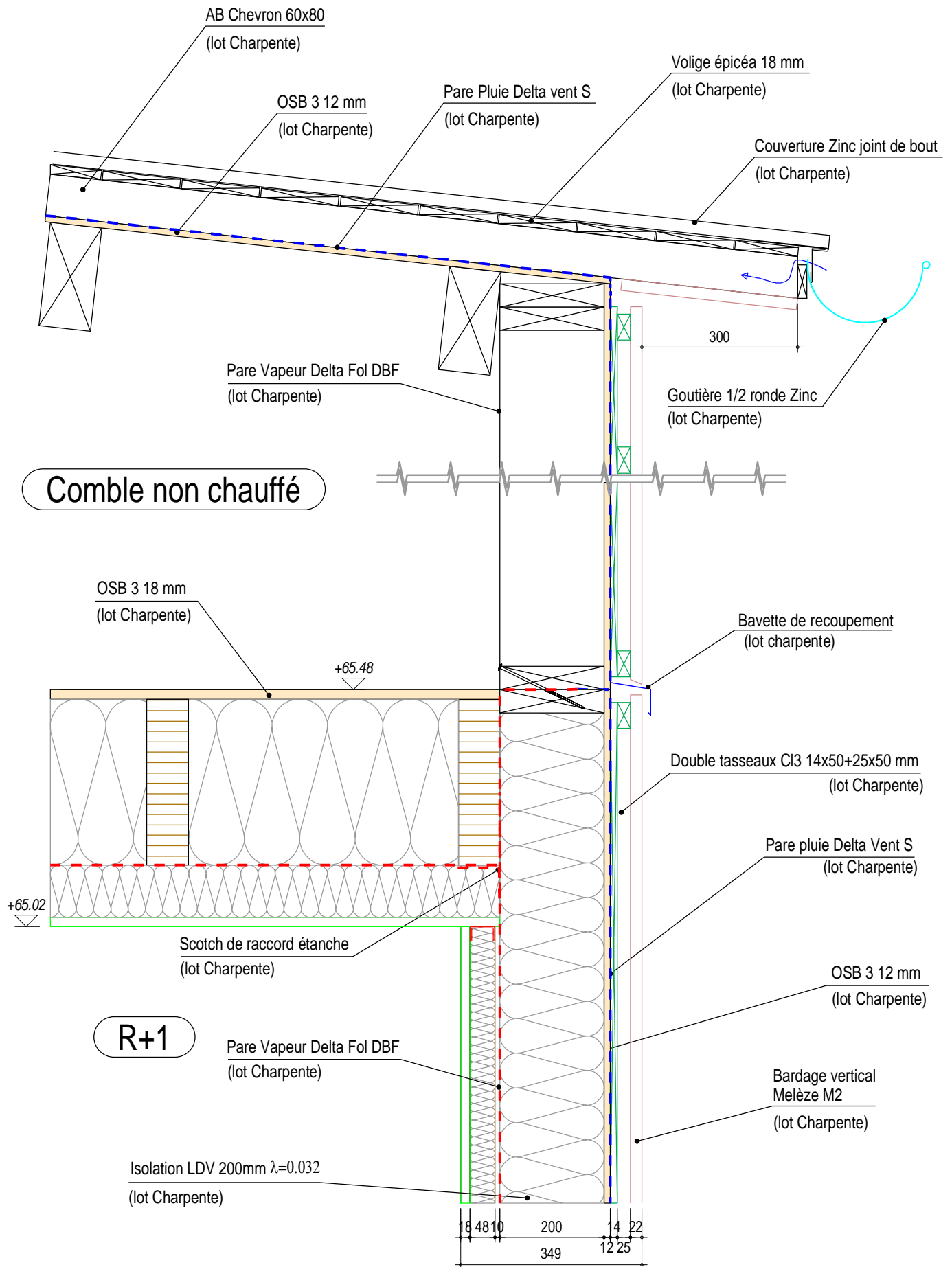


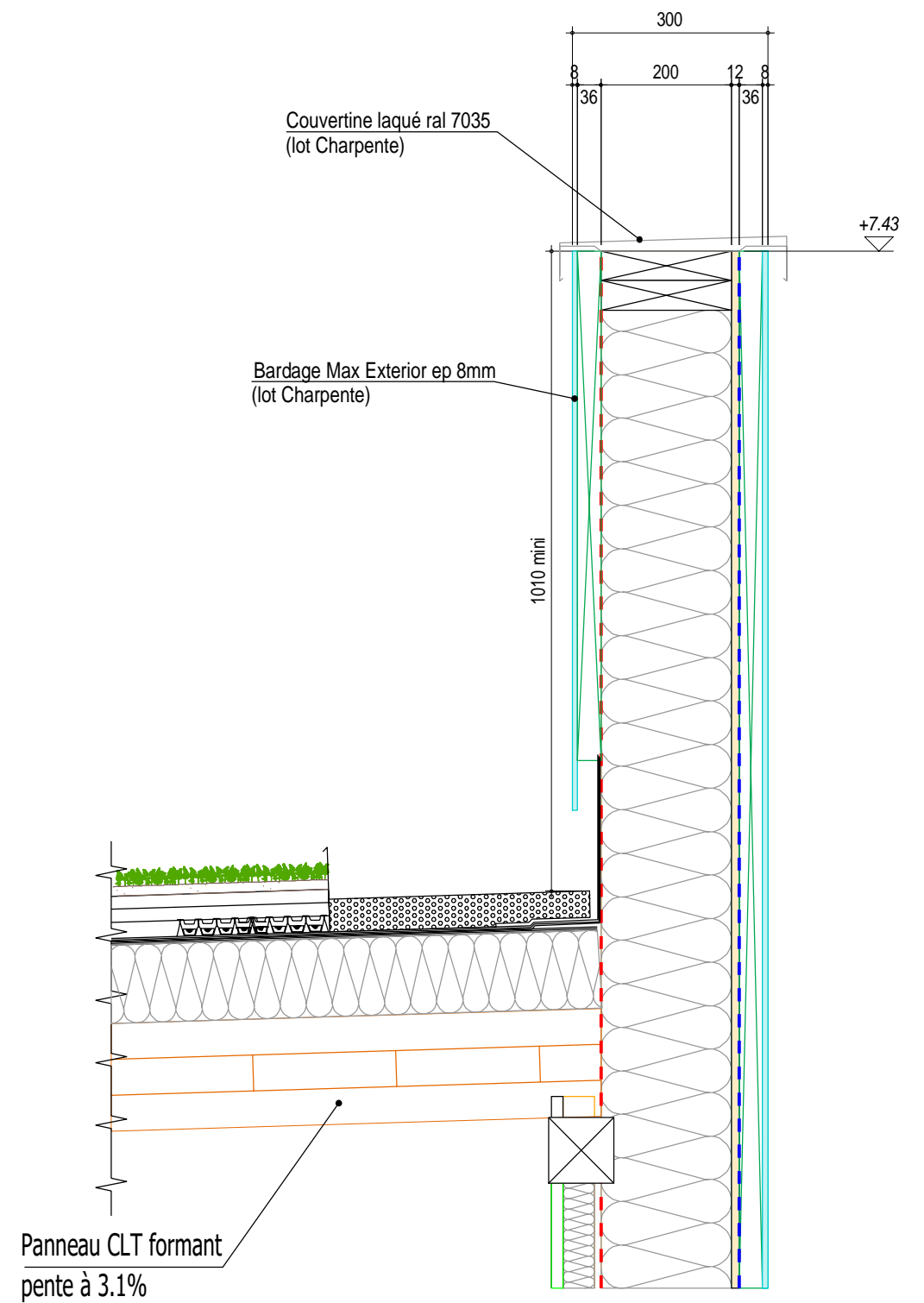
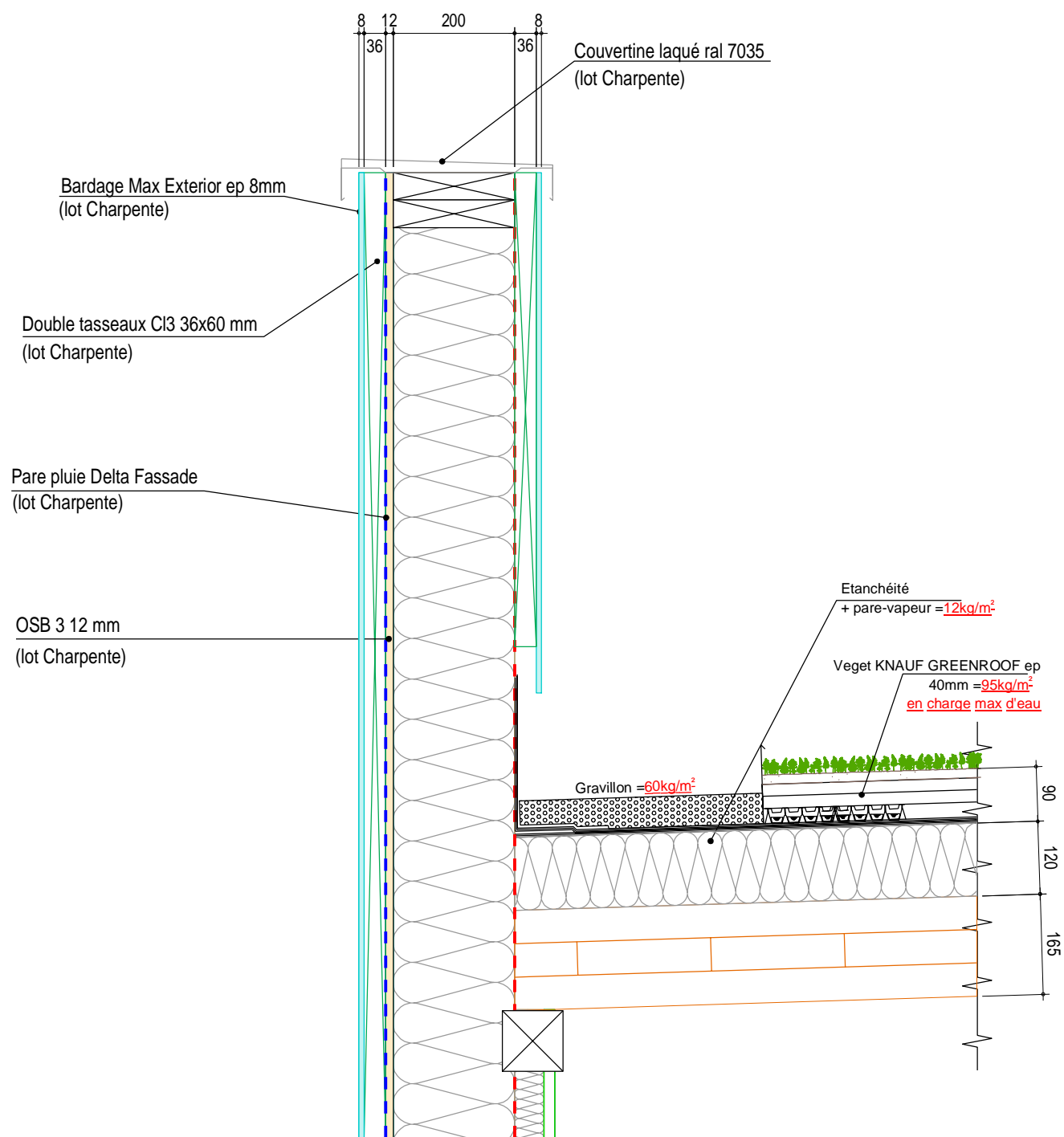












AB Chevron 60x80
(lot Charpente)

OSB 3 12 mm
(lot Charpente)

Volige épicea 18 mm
(lot Charpente)

Pare Pluie Delta vent S
(lot Charpente)

Couverture Zinc joint de bout
(lot Charpente)

300

Comble non chauffé

Bavette de recoupement
(lot charpente)

OSB 3 18 mm
(lot Charpente)

Double tasseaux CI3 14x50+25x50 mm
(lot Charpente)

+65.48

Pare pluie Delta Vent S
(lot Charpente)

+65.02

OSB 3 12 mm
(lot Charpente)

Scotch de raccord étanche
(lot Charpente)

R+1

Bardage vertical
(lot Charpente)
Melèze M2

Pare Vapeur Delta Fol DBF
(lot Charpente)

22 14 200 1048 18
25 12 349

