

+112.57

+103.15

+99.12 / +18.93

+96.70 / +16.51

+92.52 / +12.33

+89.42 / +9.23

+87.52^s

+80.19 / ±0.00

+79.29

+92.47

+89.01

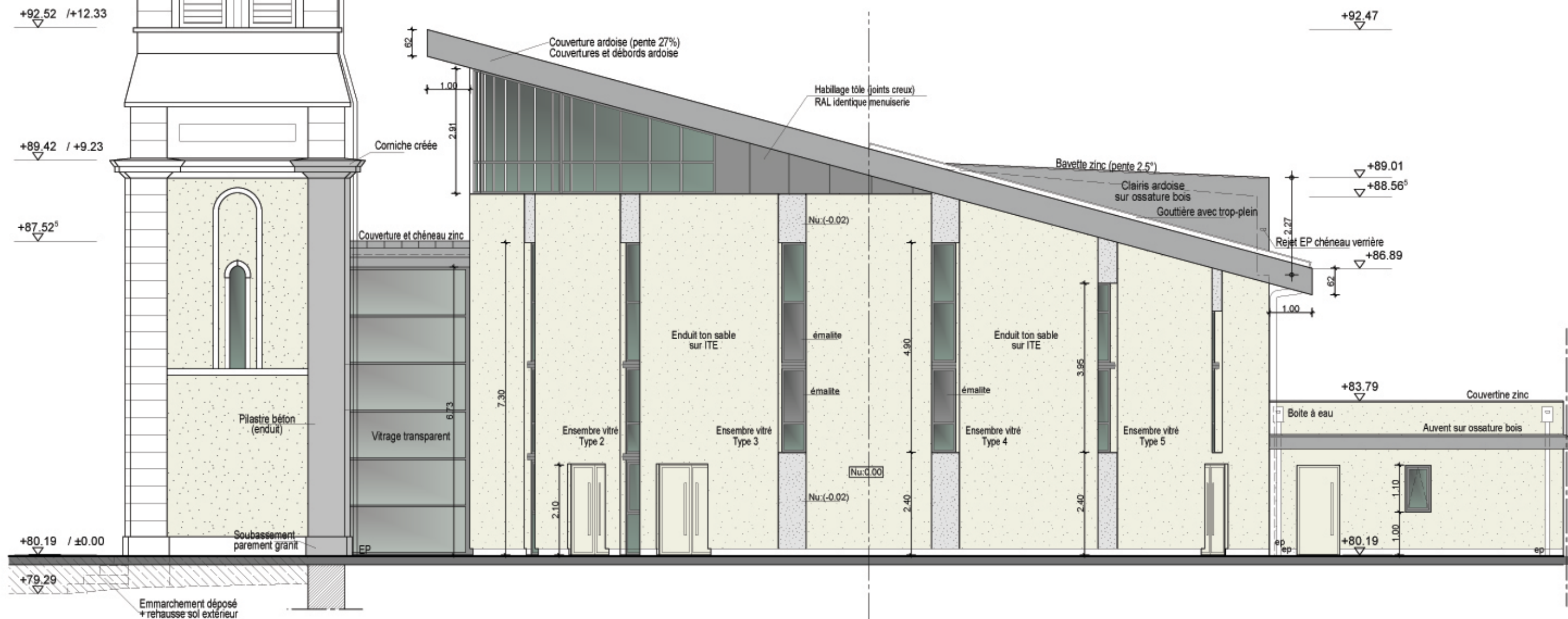
+88.56^s

+86.89

+83.79

+80.19

Nota: Nettoyage de toute les façades
du clocher (reprise à l'outil+rejointoiement)



FACADE OUEST