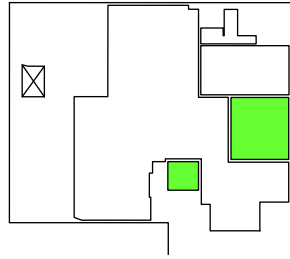
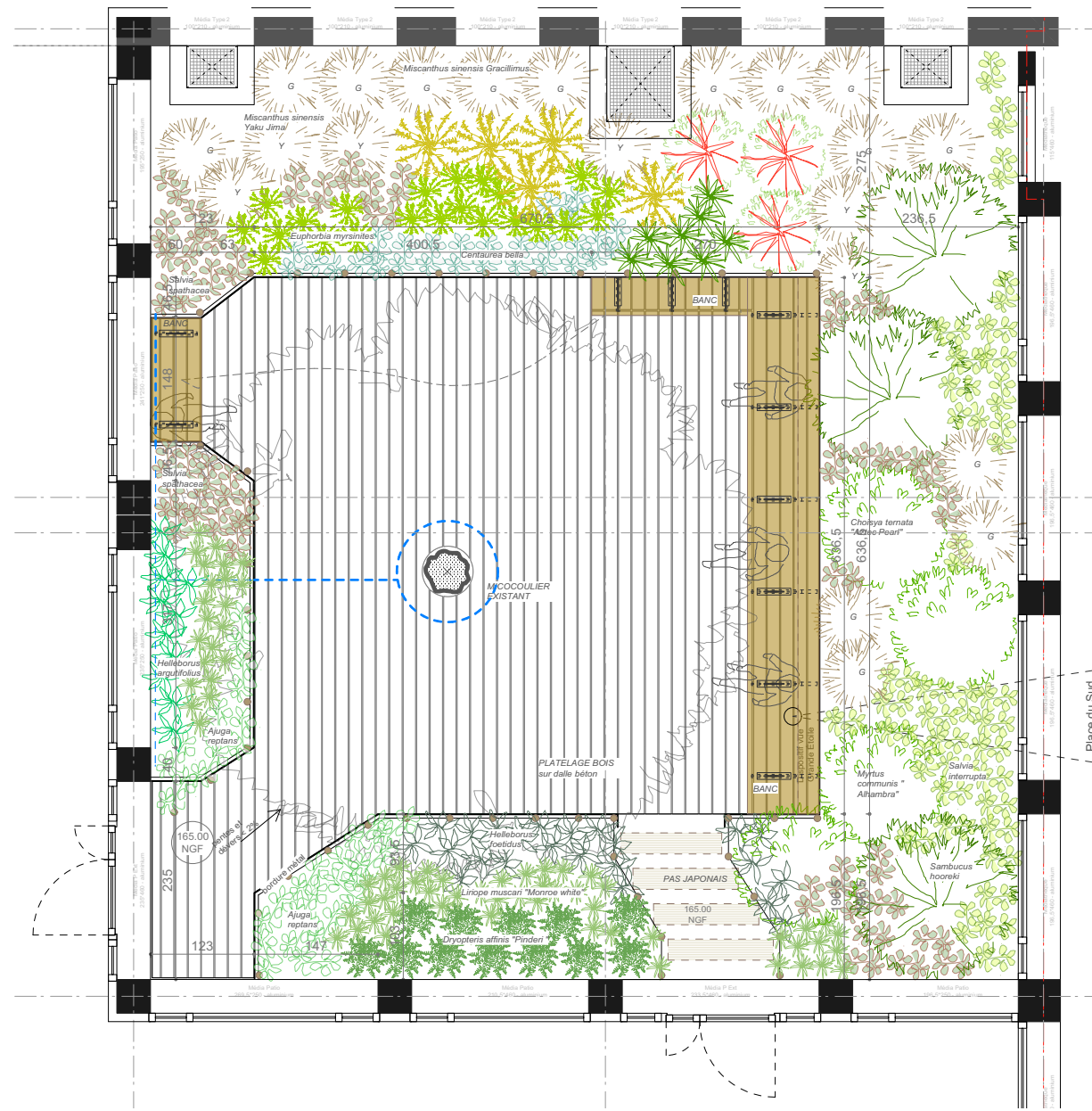


LES PATIOS



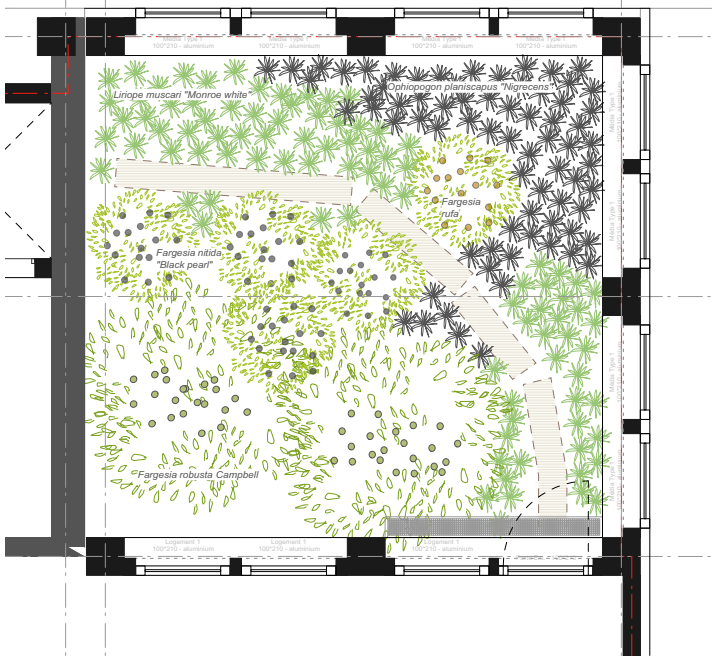
GRAND PATIO







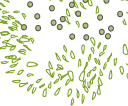

PETIT PATIO



MATÉRIAUX & PLANTES

-   Roseau de Chine "Gracillimus"
Miscanthus sinensis Gracillimus
-   Roseau de Chine "Yaku Jima"
Miscanthus sinensis Yaku Jima
-   Euphorbe des vallons
Euphorbia characias ssp. 'wulfenii'
densité plantation 1/m²
-   Euphorbe de Corse
Euphorbia myrsinites
densité plantation 6/m²
-   Agapanthe précoce
Agapanthus praecox
densité plantation 5/m²
-   Centaurée élégante
Centaurea bella
densité plantation 9/m²
-   Sureau Hookeri
Sambucus hookeri
-   Oranger du Mexique "Aztec Pearl"
Choysia ternata "Aztec Pearl"
densité plantation 1/m²
-   Sauge colibri
Salvia spathacea
densité plantation 4/m²
-   Sauge interrupta
Salvia interrupta
densité plantation 5/m²
-   Héllébore de Corse
Helleborus argutifolius
densité plantation 4/m²
-   Liriope muscari "Monroe White"
Liriope muscari "Monroe white"
densité plantation 5/m²
-   Bugle rampant
Ajuga reptans
densité plantation 6/m²
-   Héllébore foetide
Helleborus foetidus
densité plantation 5/m²
-   Fausse fougère mâle "Pinderi"
Dryopteris affinis "Pinderi"
densité plantation 4/m²
-   Myrthe commune "Alhambra"
Myrtus communis "Alhambra"
-   Cornouiller sanguin
Cornus sanguinea "Winter Flame"



-   Barbe de serpent "Nigrescens"
Ophiopogon planiscapus Nigrescens
densité plantation 7/m²
-   Bambou *Fargesia nitida "Black pearl"*
Fargesia nitida "Black pearl"
-   Bambou Parapluie
Fargesia rufa
-   Bambou *Fargesia robusta Campbell*
Fargesia robusta Campbell

-   Platelage bois châtaignier
-   Bordure acier
-   Pas japonais madriers avivés bois de châtaignier
-   Paillage "mulch" organique
-   Graviers calcaires
-   Clôture temporaire piquets châtaignier filin acier