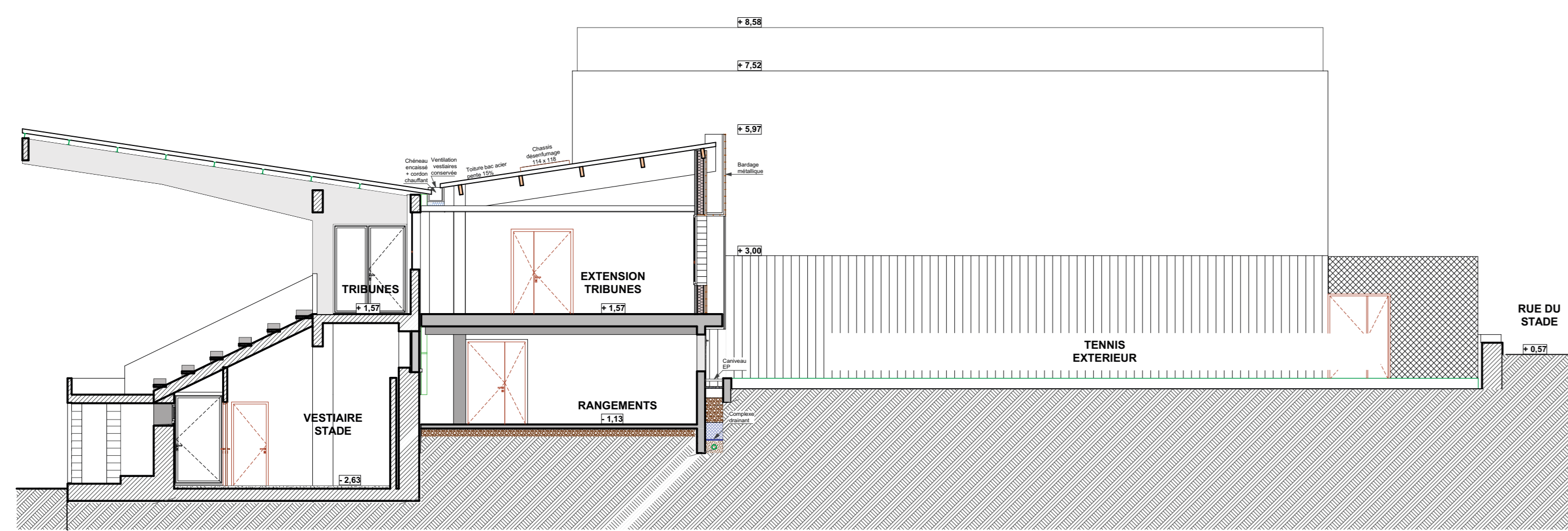
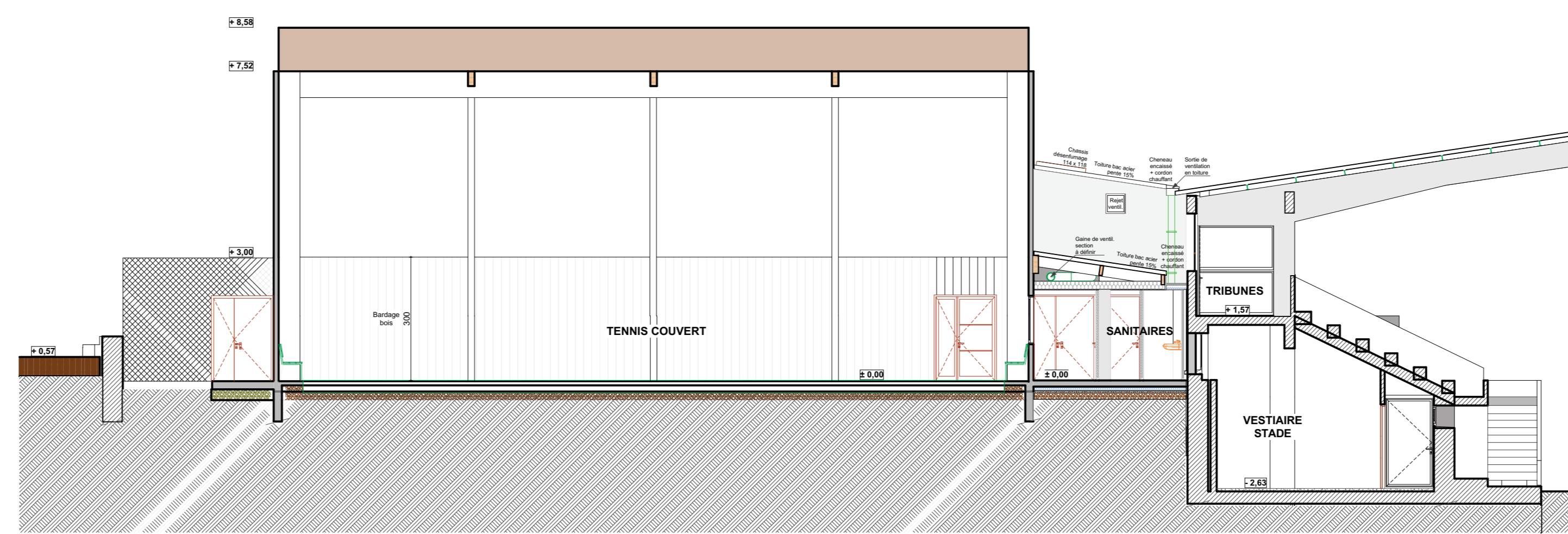


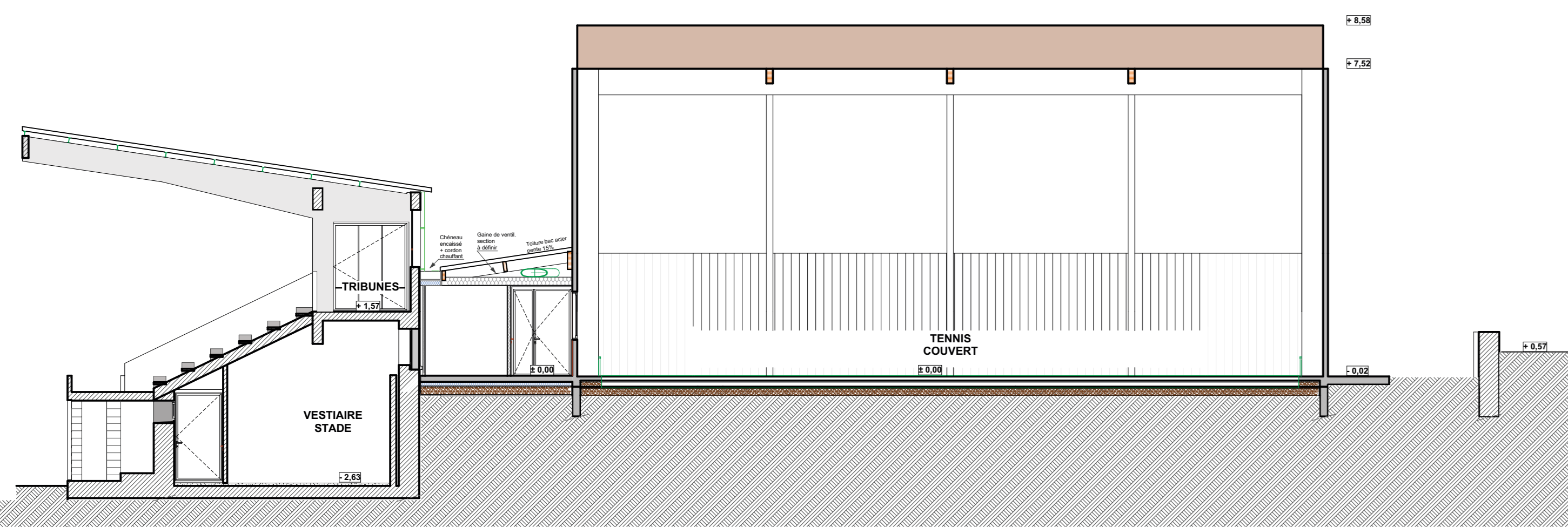
Coupe AA



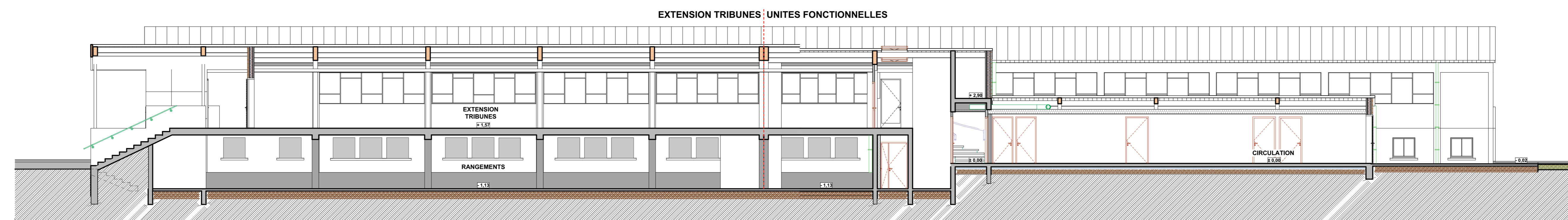
Coupe CC



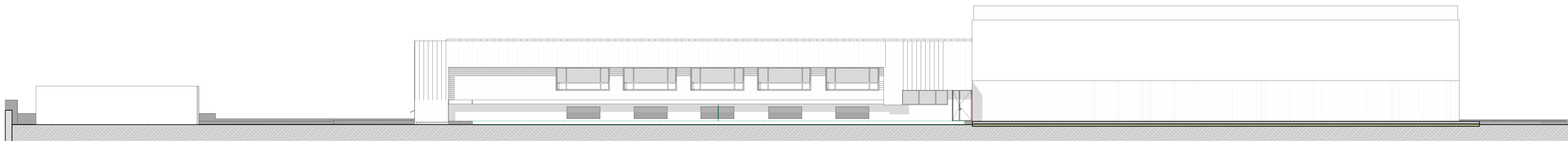
Coupe BB



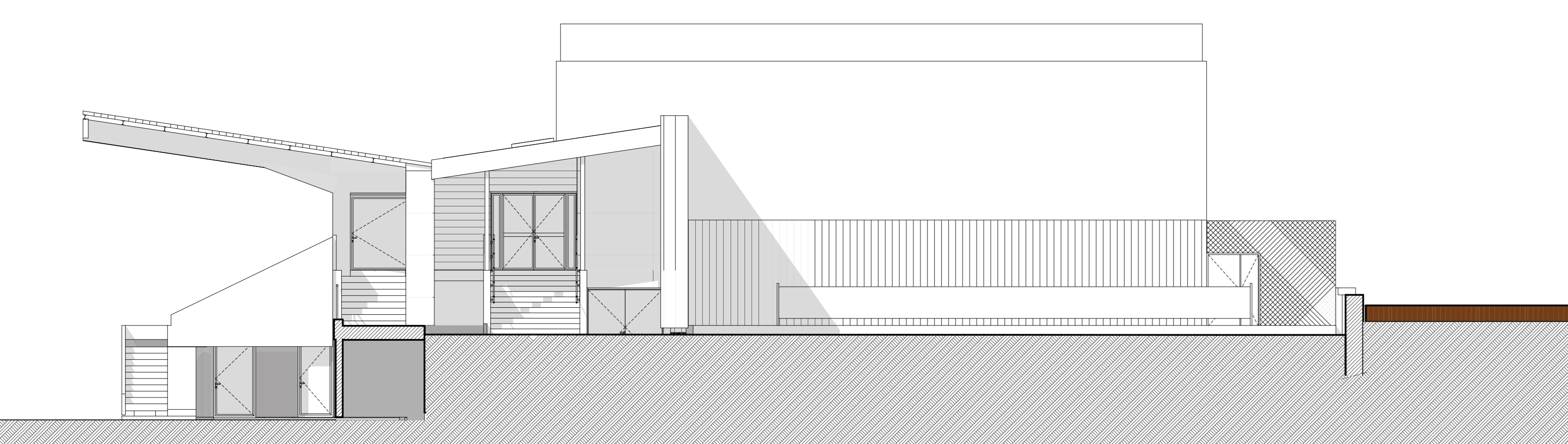
Coupe DD - longitudinale



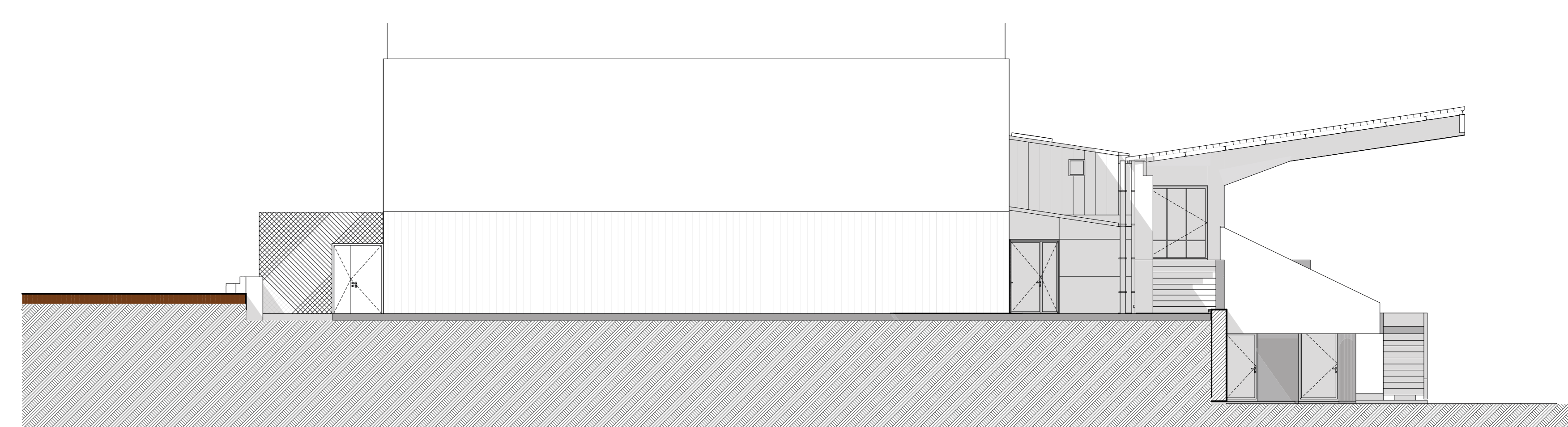
Façade Sud Ouest



Façade Nord Ouest



Façade Sud Est



sébastien claveyrolat architecte D.E.
19 avenue comtal - 19200 ussel
Tf 09 81 79 11 34 Tf 06 74 14 34 54 Tf 09 81 70 09 24 M s.claveyrolat.architecte@orange.fr

BEMP BEMP 39, route de Beauze 23200 AUBUSSON

CS2N CS2N 38, rue Niel 63100 CLERMONT FERRAND

SIGMA SIGMA 5, rue du Chanoine Antoine Broquin 19100 BRIVE LA GAILLARDE

Maître d'Ouvrage
Ville d'USSEL
26 Avenue Marmontel - 19200 - USSEL

CREATION D'UN TENNIS COUVERT ET EXTENSION DES TRIBUNES DU STADE
Ensemble Sportif Municipal - 19200 - USSEL

COUPES - FACADES PC 3 - 5 éch. 1/100

A ESQ APS APD PC PRO EXE DOE

août 2017