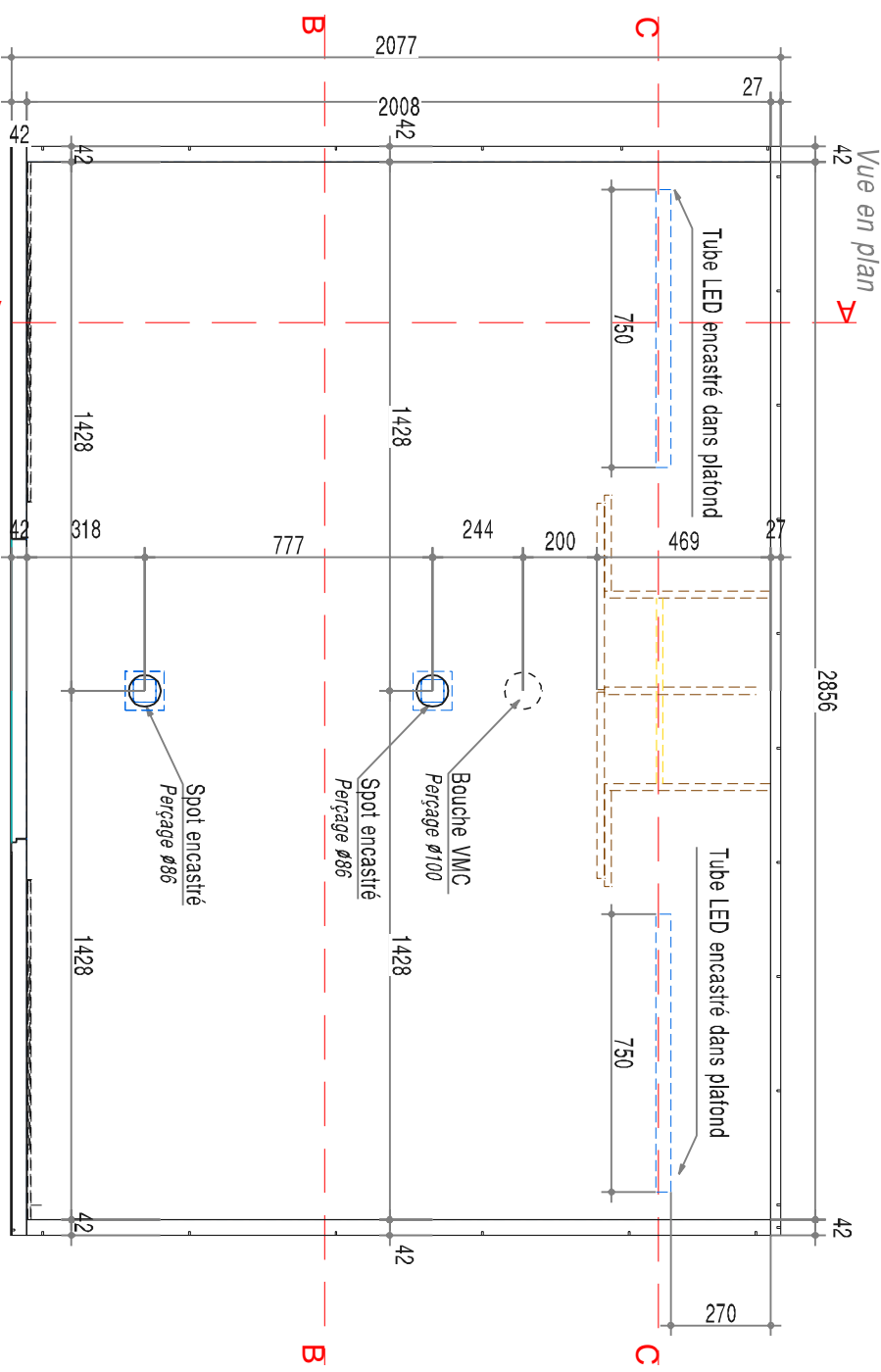
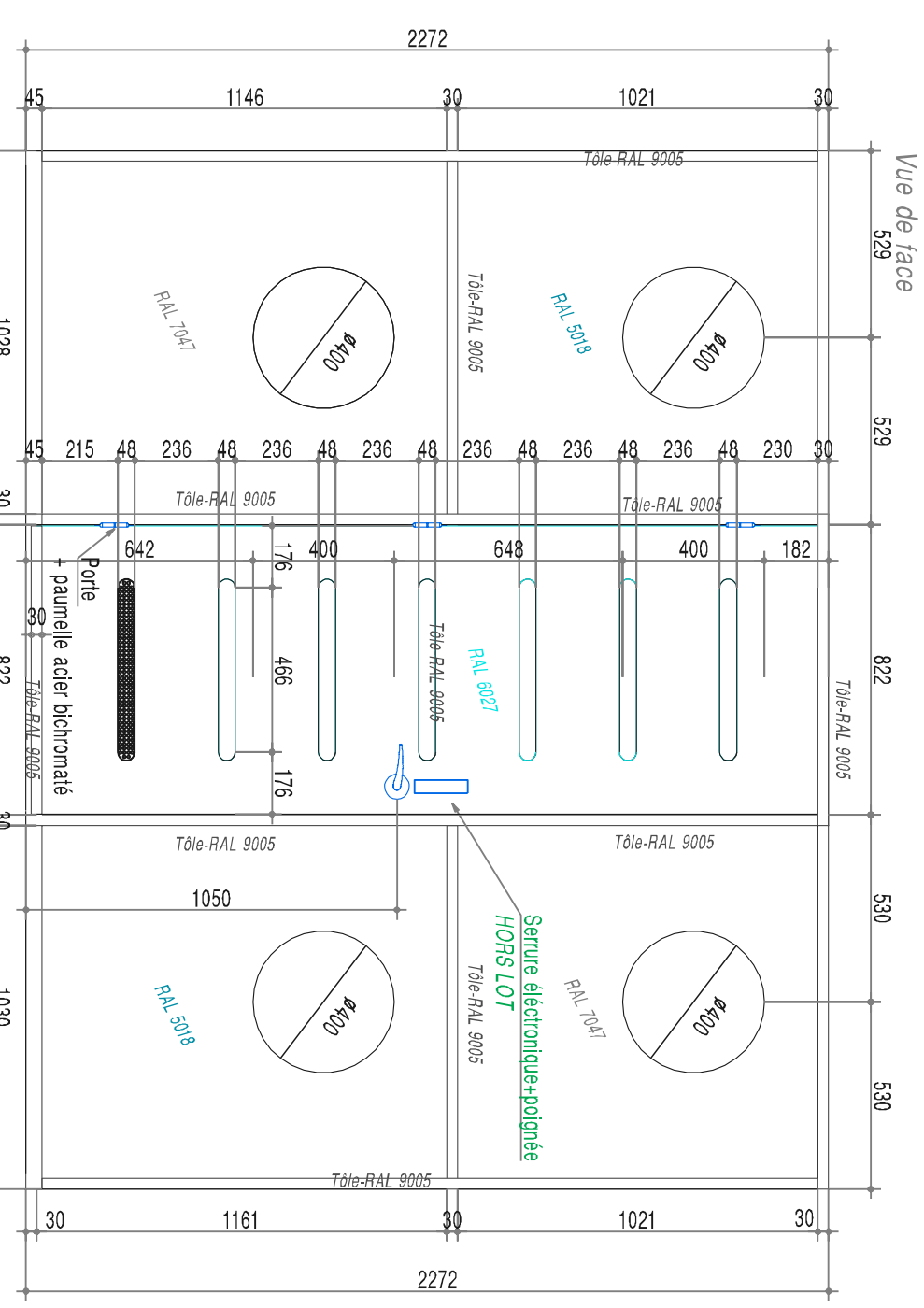


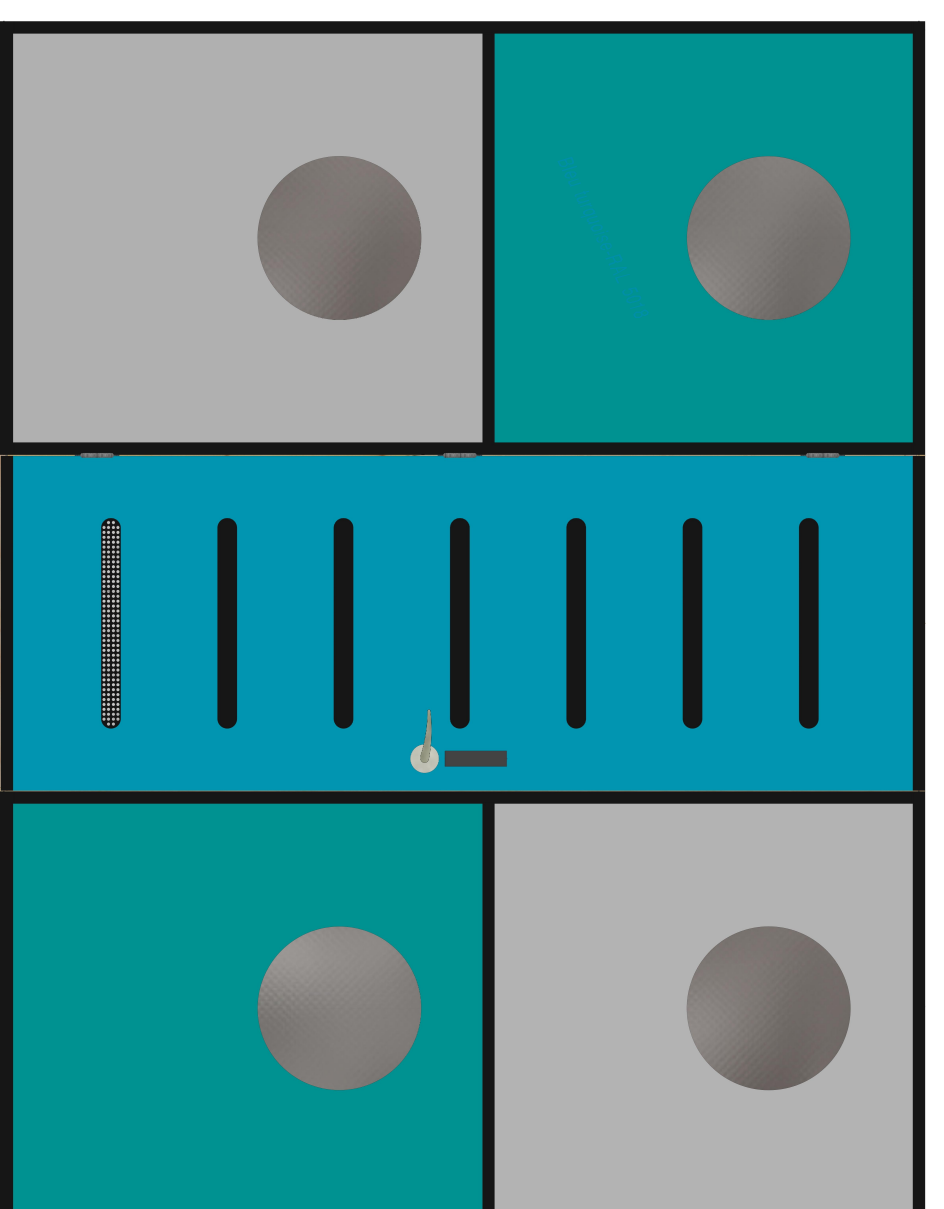
PLAFOND



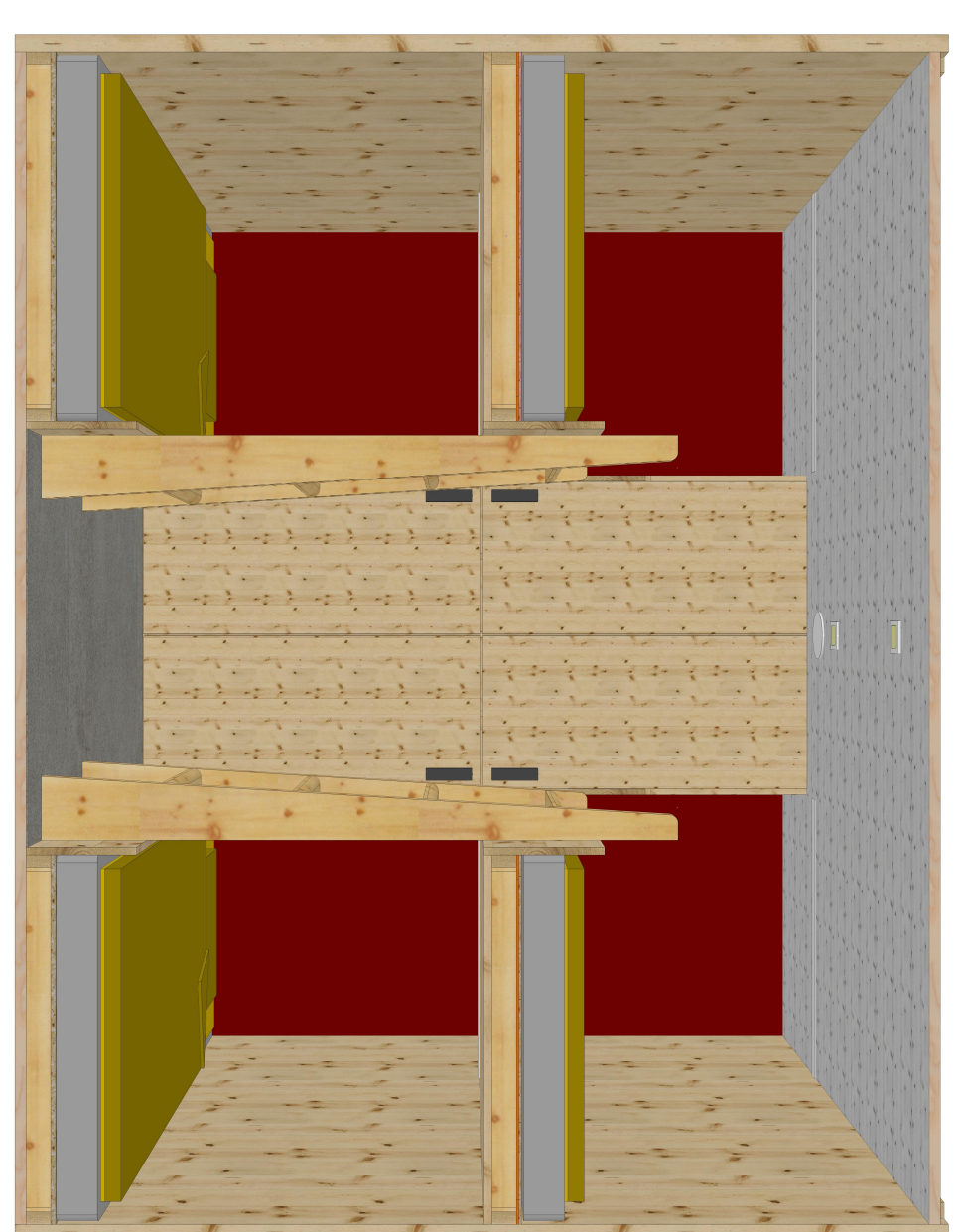
FACADE



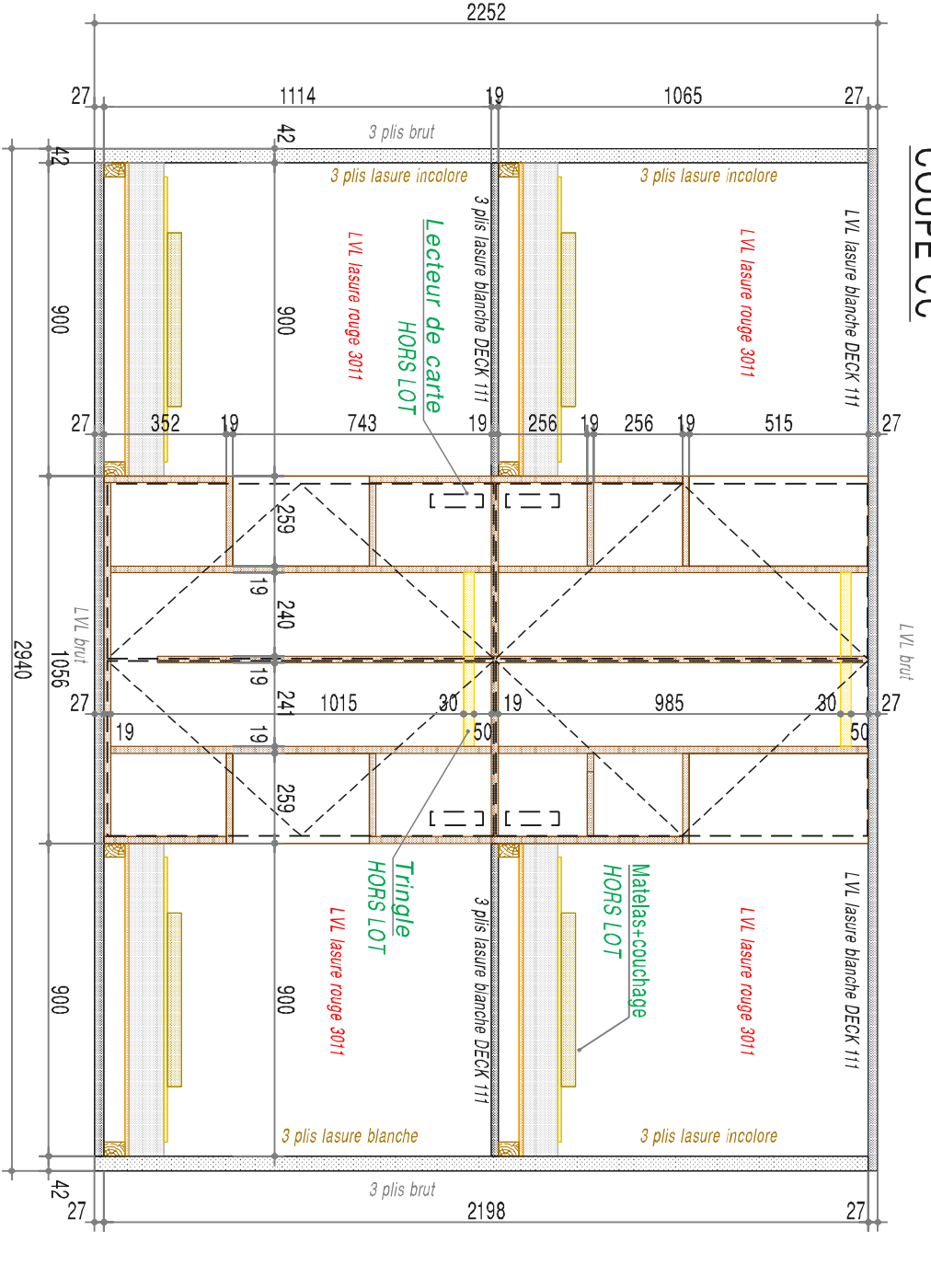
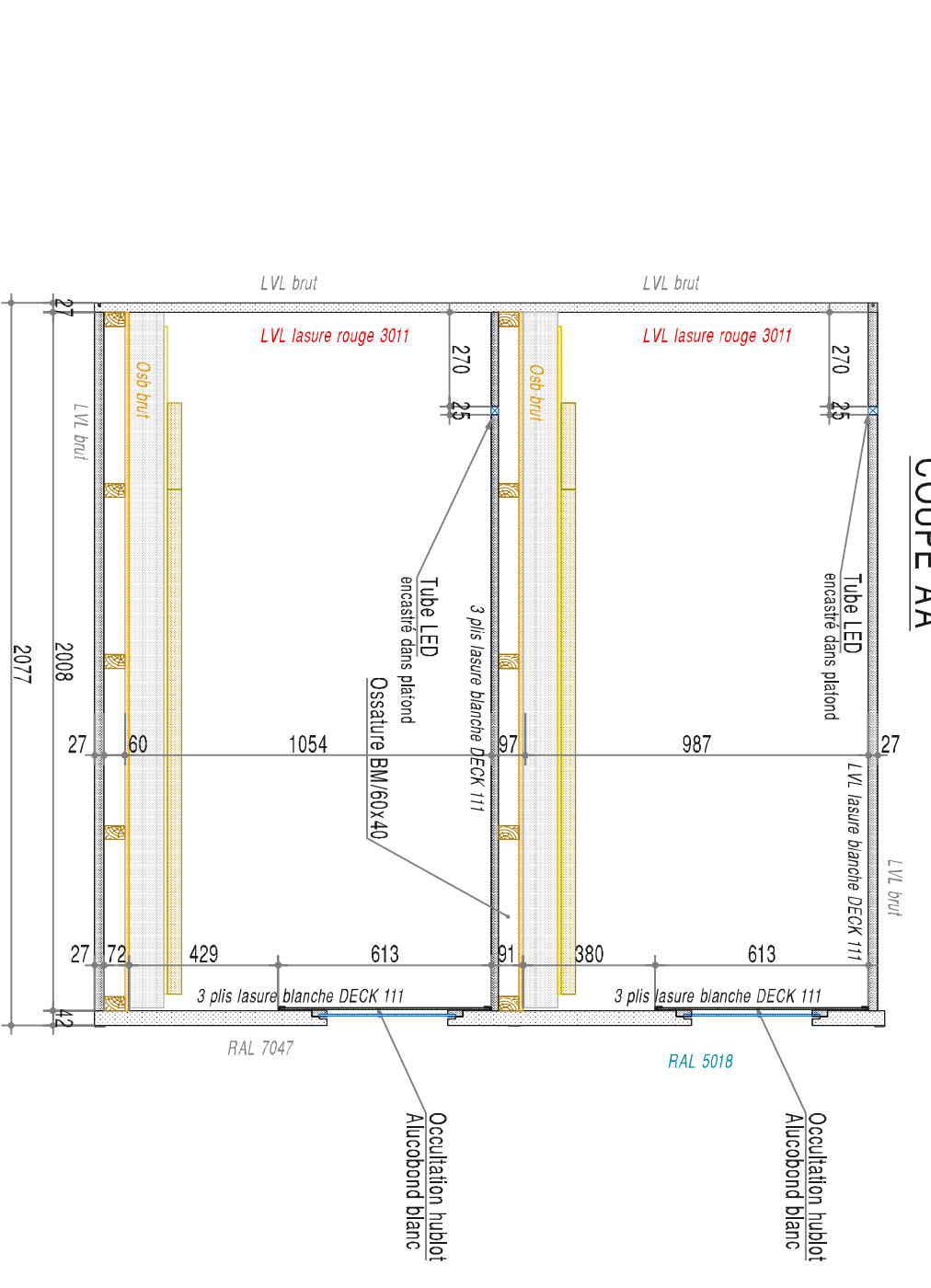
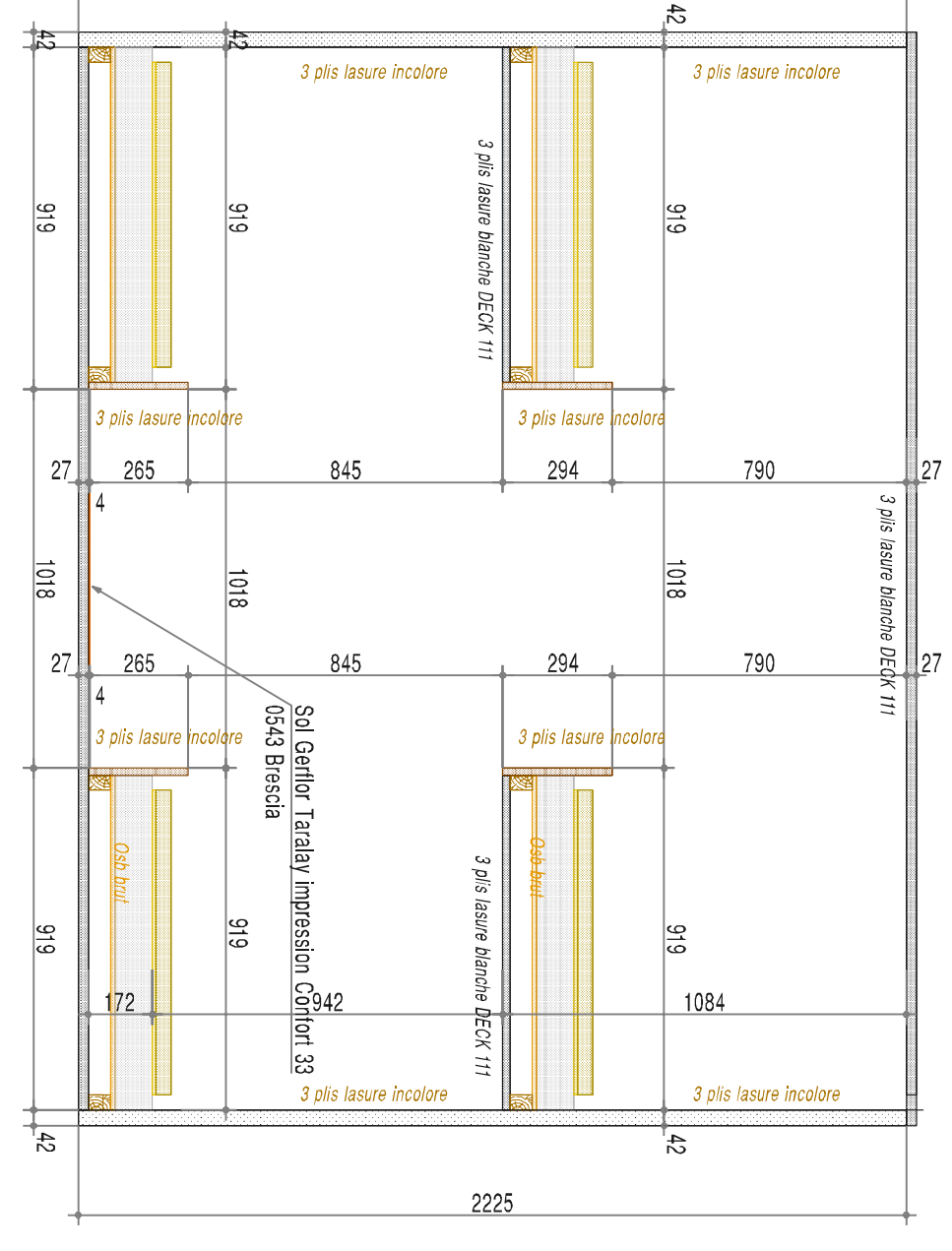
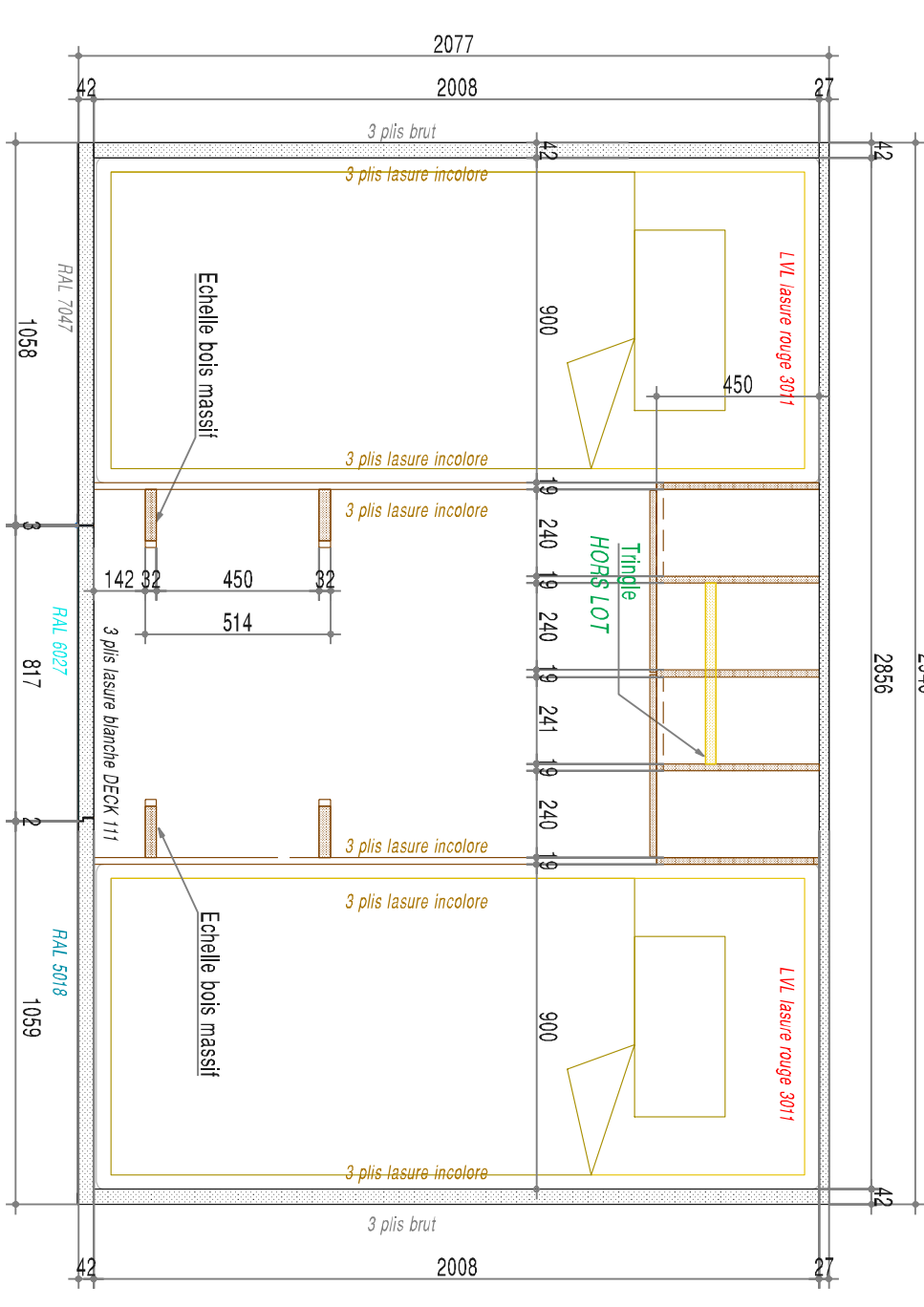
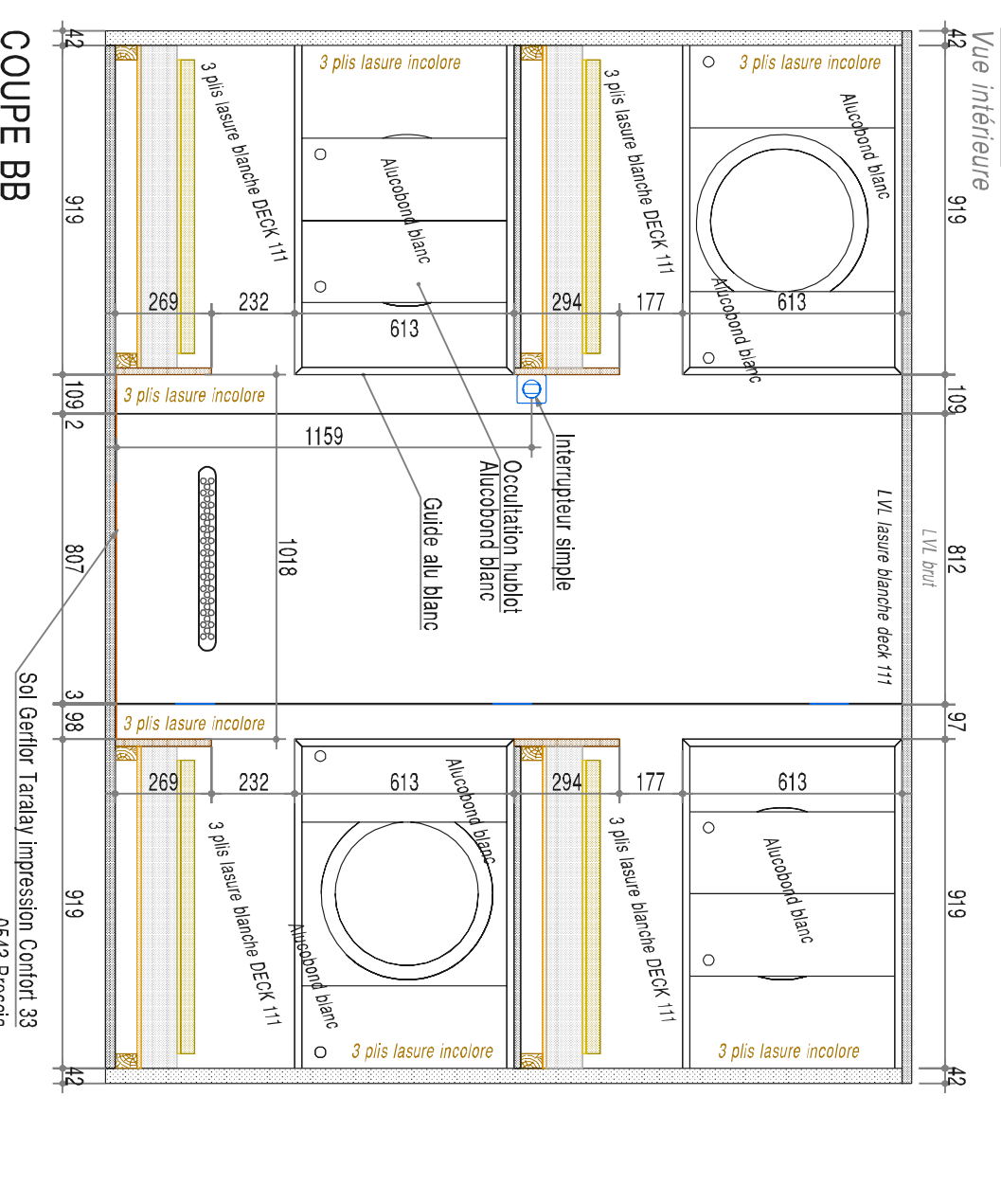
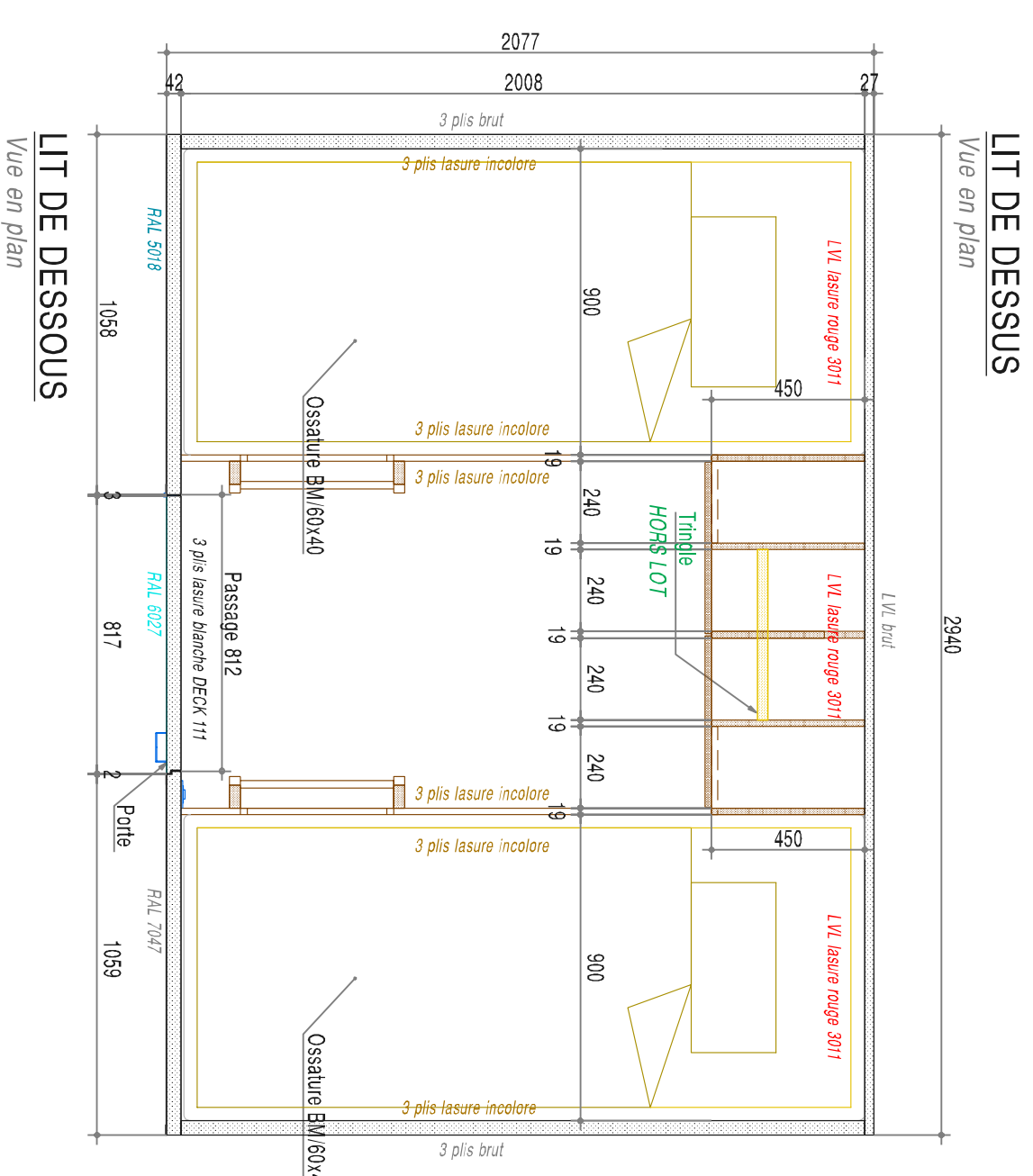
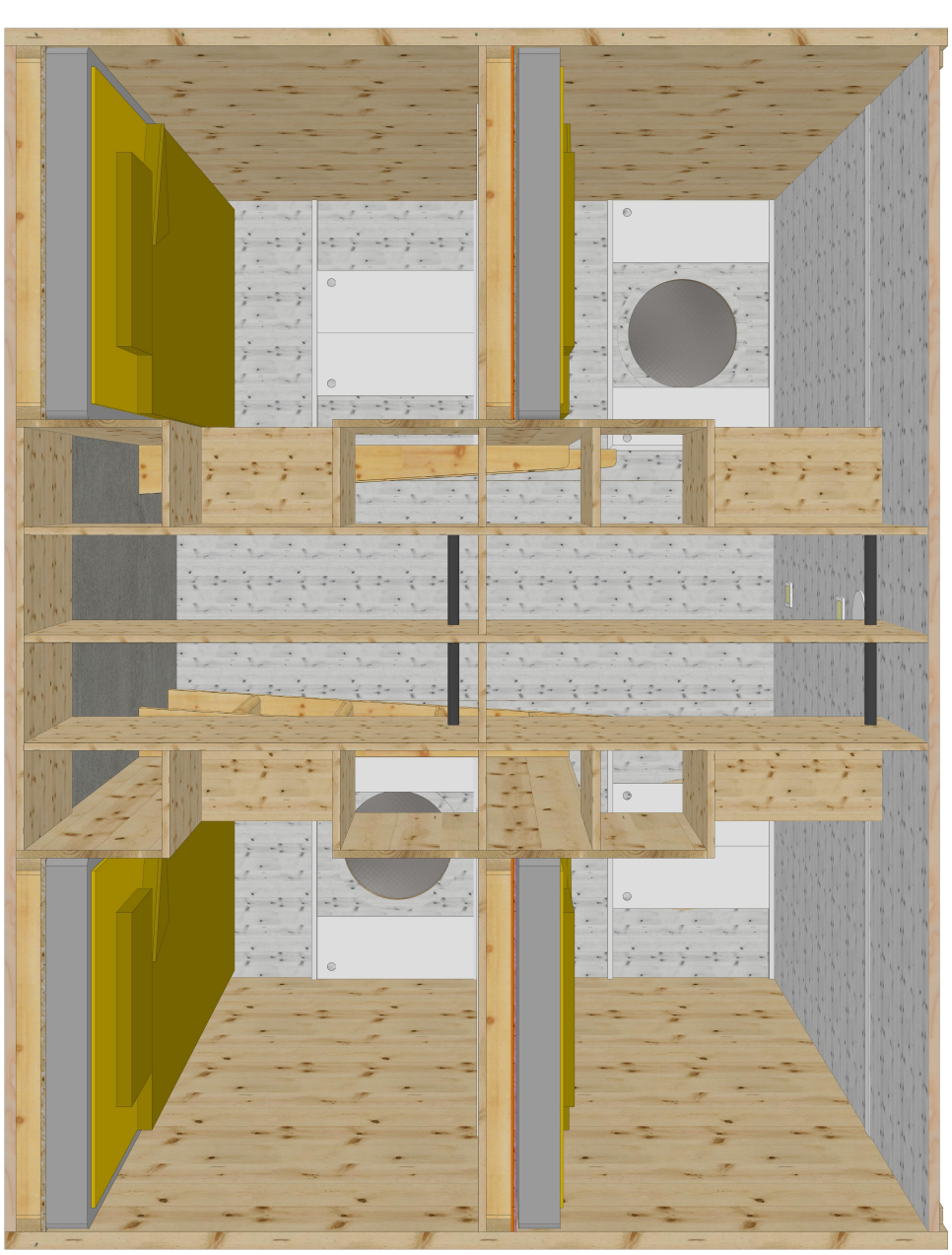
FACADE



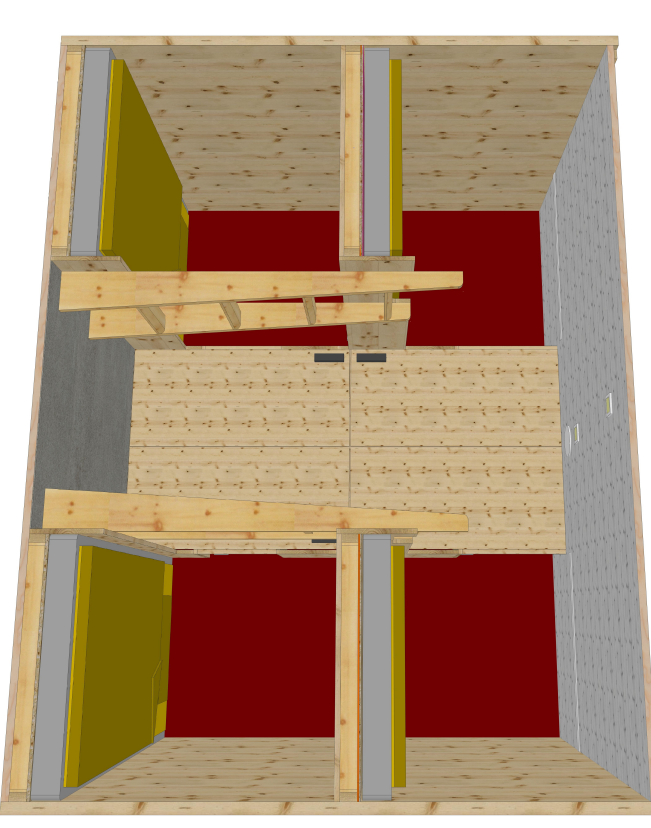
VUE INTERIEURE FACE ARRIERE



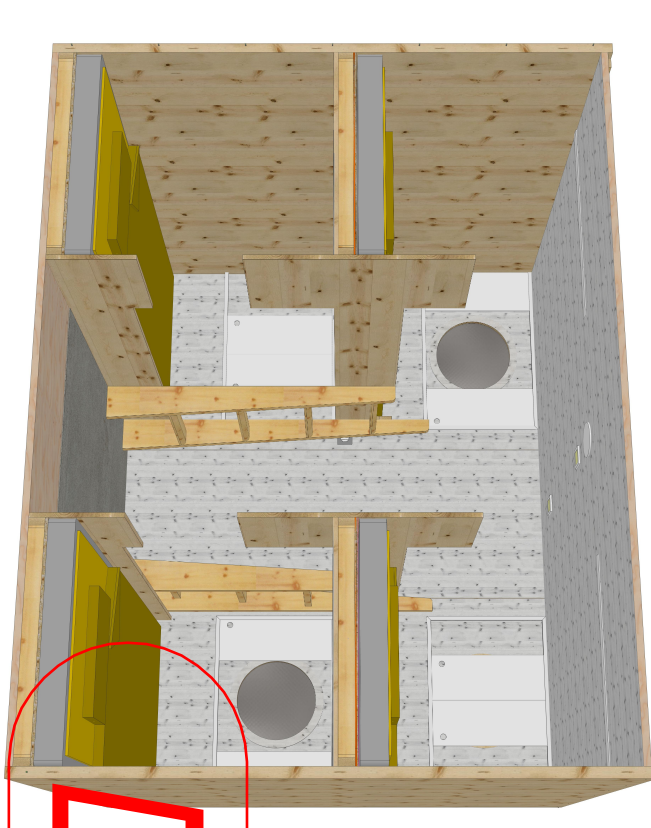
VUE INTERIEURE FACE AVANT



PERSPECTIVE 1



PERSPECTIVE 2



PIAU ENGALY
Auberge de jeunesse

PRENEES CHARPENTES
Z.N. de Pneu 05 62 97 72 32
Email: contact@preneescharpentes.fr

date : 27-11-2018
dess. : qp
Ech. : 1/20
n° plan : CBA A face C
Vue en plan - Coupes - Perspectives

CABINE A

DOE