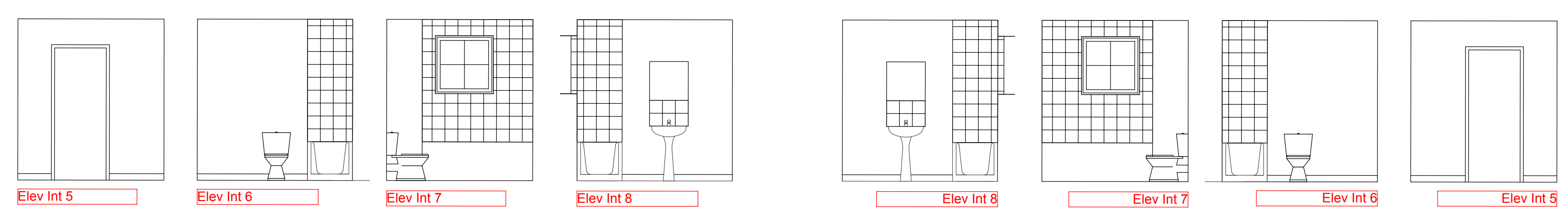
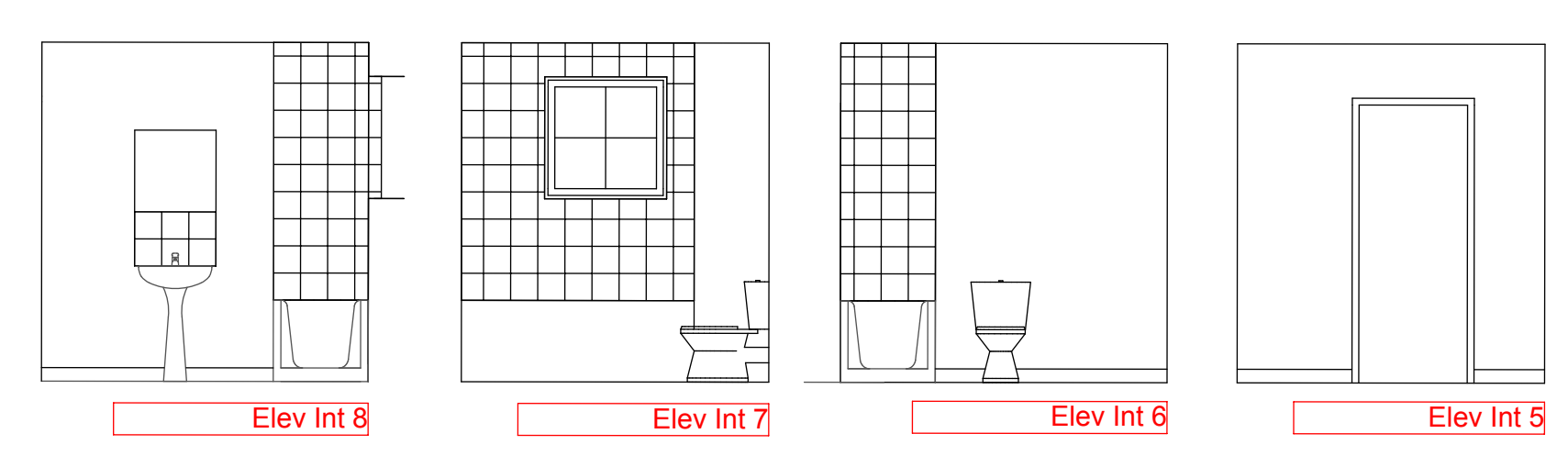


plans etage 2xT4

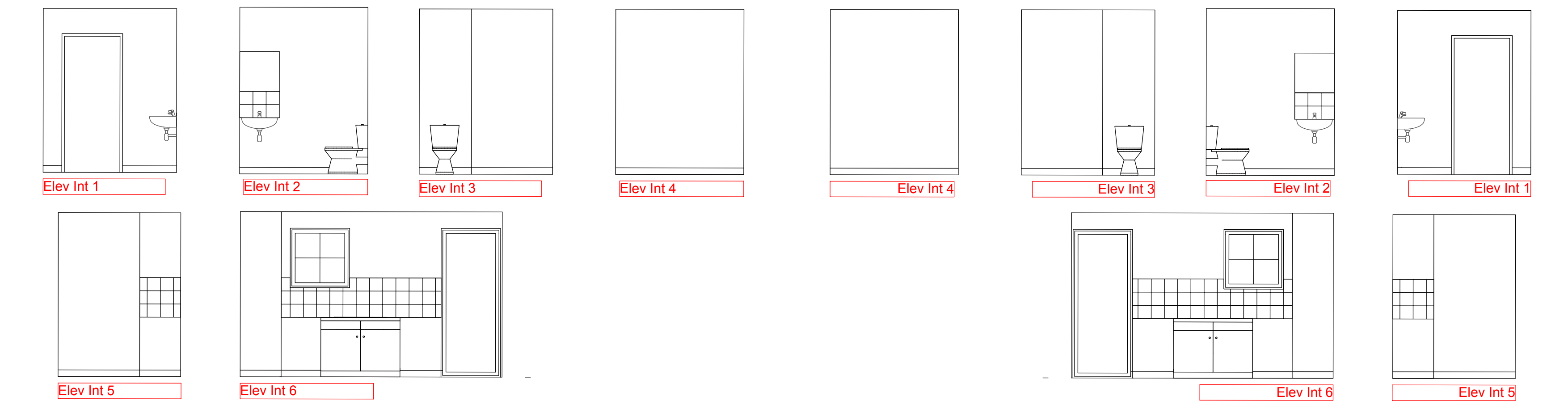
plans rdc 2xT4



Elévations intérieures T4 gauche étage

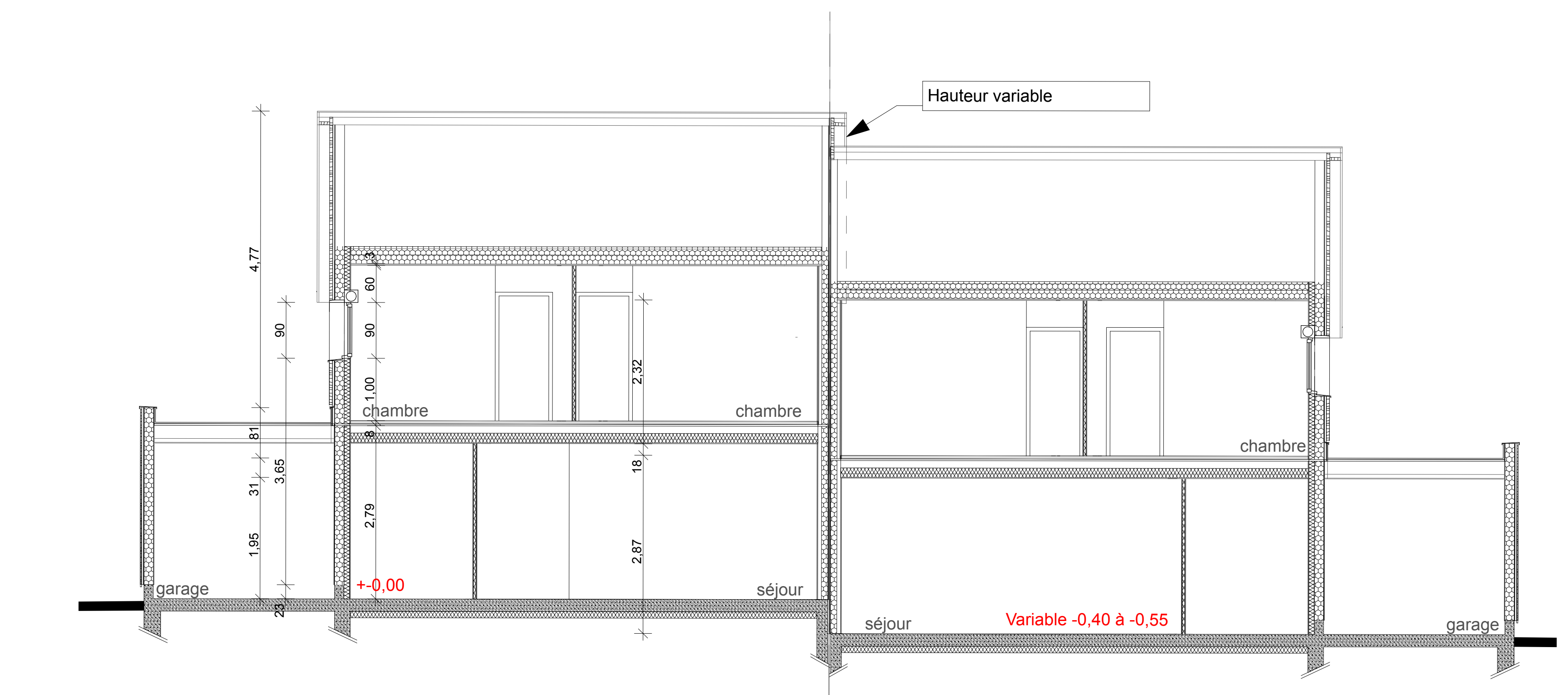
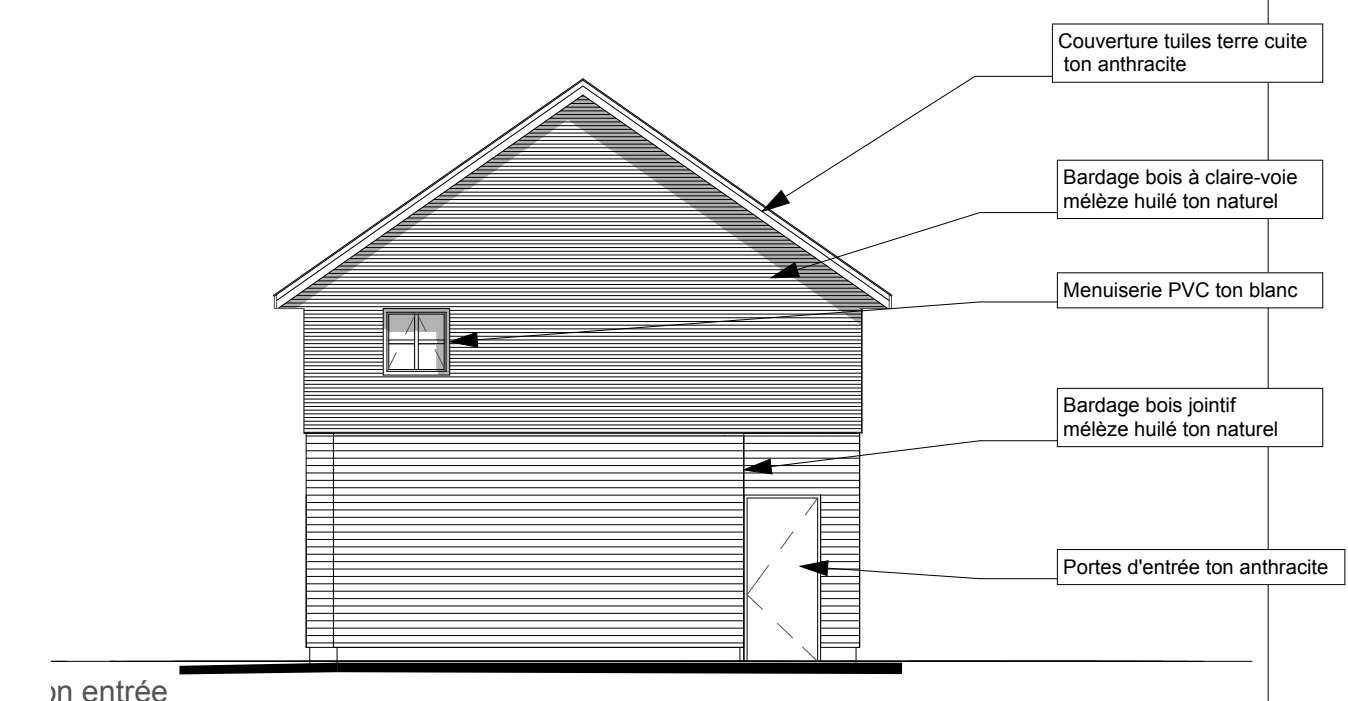
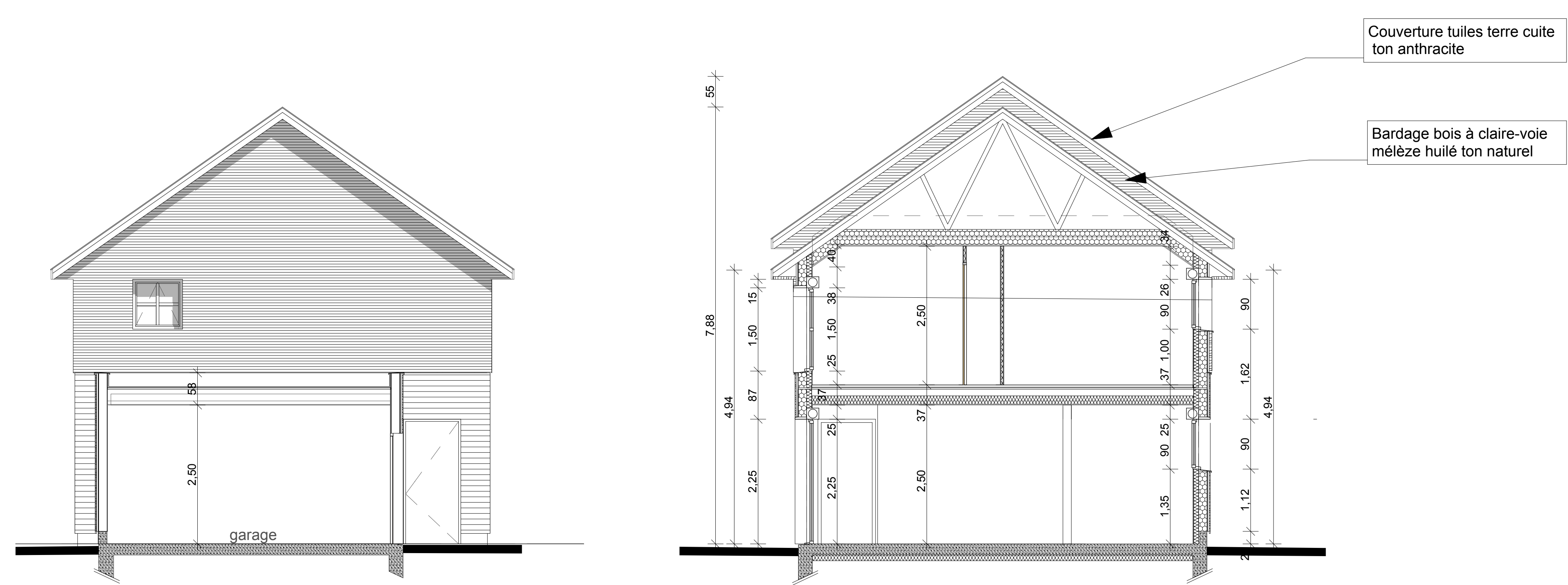


Elévations intérieures T4 droit étage



Elévations intérieures T4 gauche RDC

Elévations intérieures T4 droit RDC



Plans Coupes Elévations 2xT4		LOGEAL		ATELIERS 62	
5 rue St Pierre BP 158 76104 YVETOT		Construction de 18 logements à Beuzeville-La-Grénier		ATELIERS 62	
DOE 02	11.12	Economies	Etudes Fautou & Bourne	Etudes VED	
	27.10.2016				
	1100				
	A3				