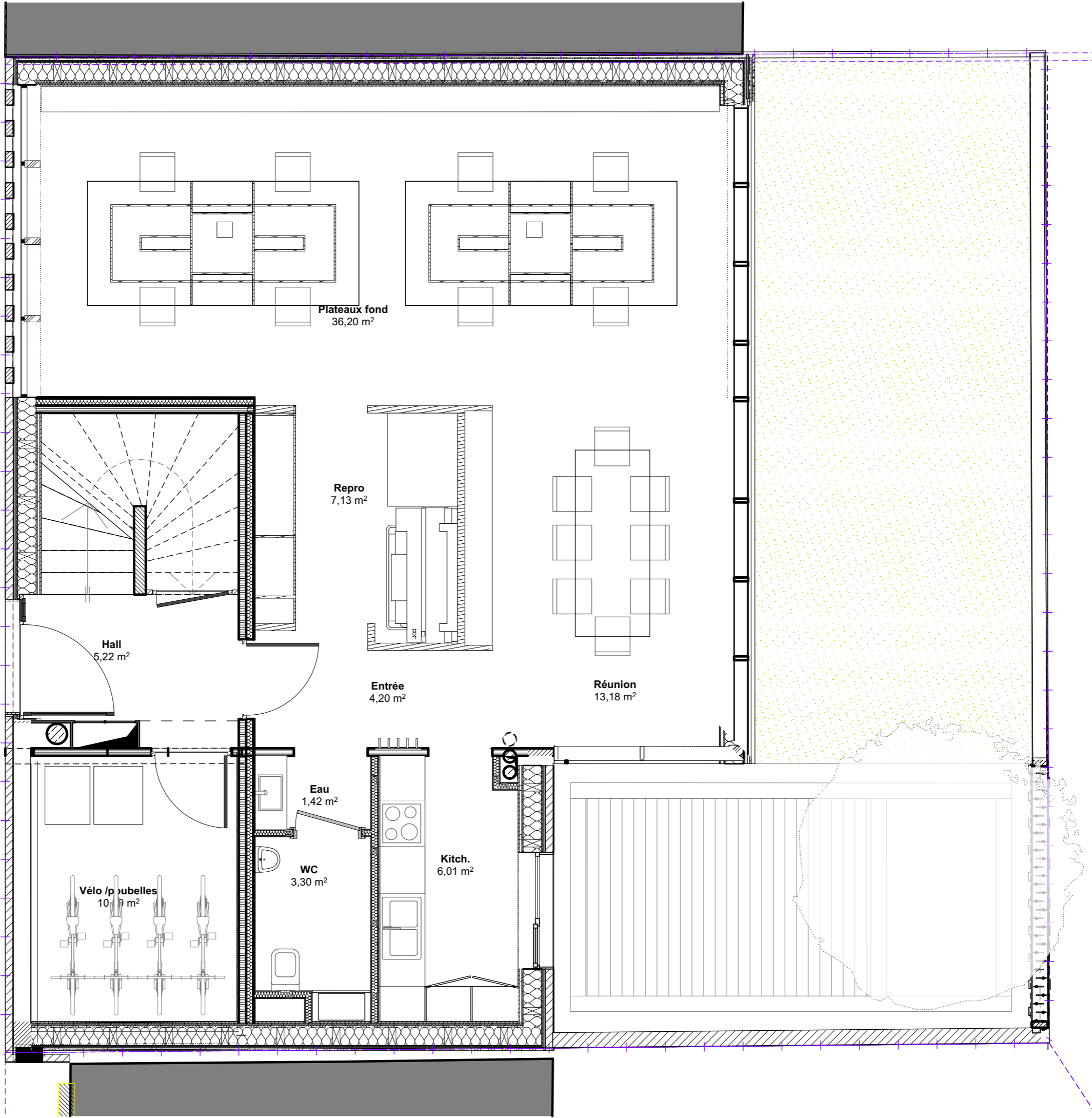
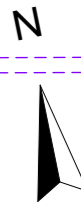


Immeuble mixte à
Sélestat
Plan Rdc _ 1/50e
Ajeance



Plateaux fond
36,20 m²

Repro
7,13 m²

Hall
5,22 m²

Entrée
4,20 m²

Réunion
13,18 m²

Vélo / poubelles
10,19 m²

Eau
1,42 m²

WC
3,30 m²

Kitch.
6,01 m²