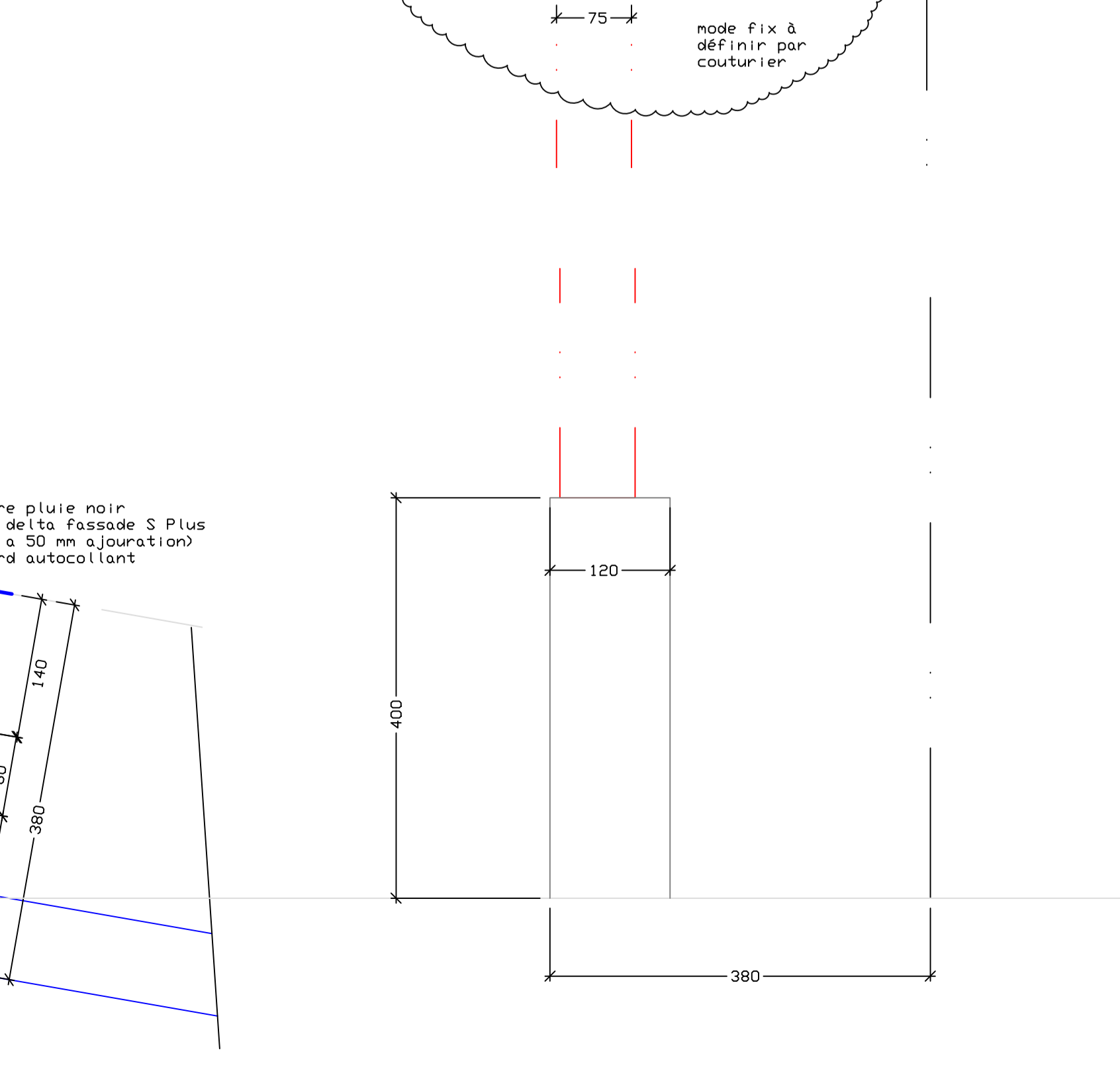
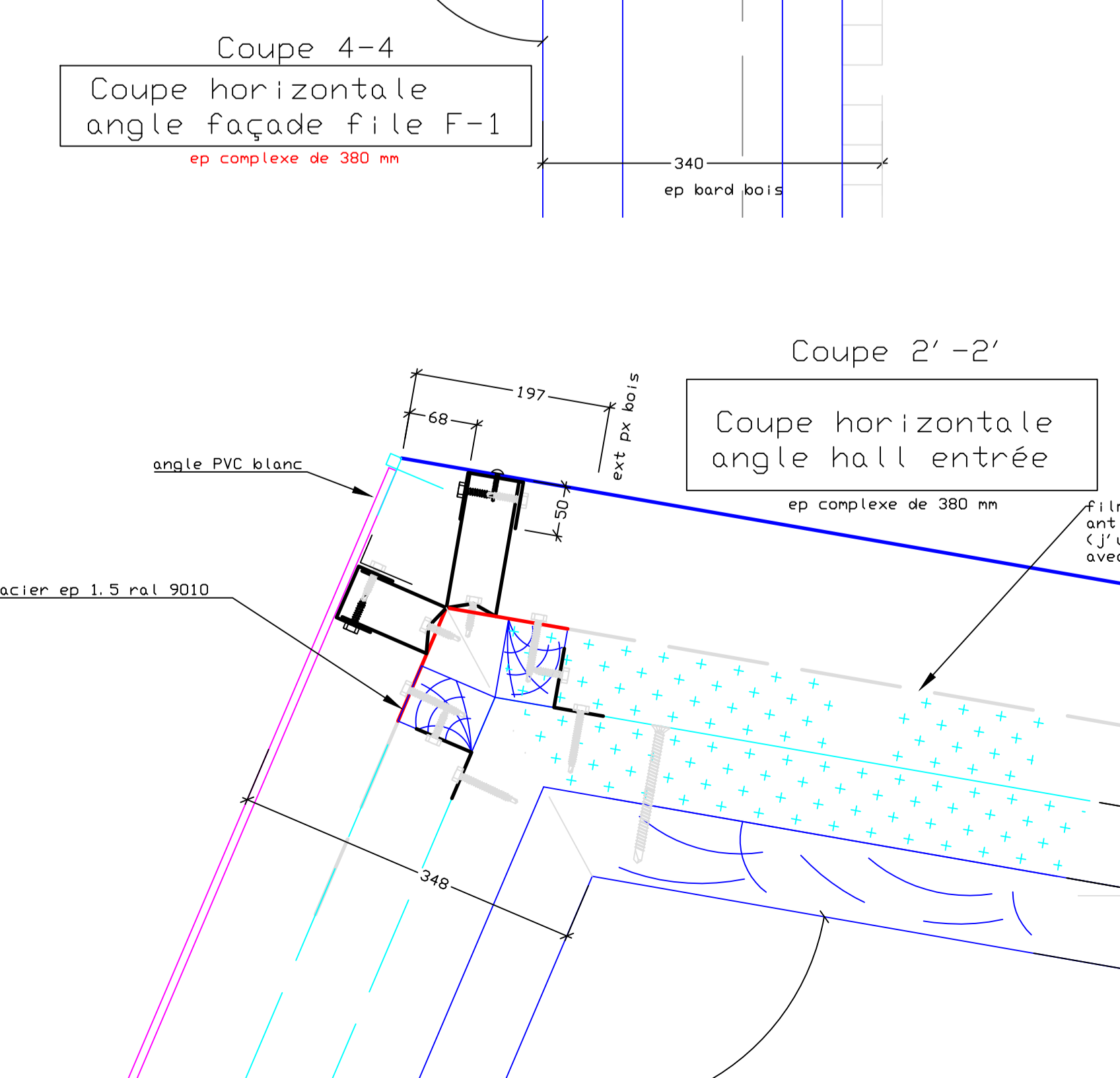
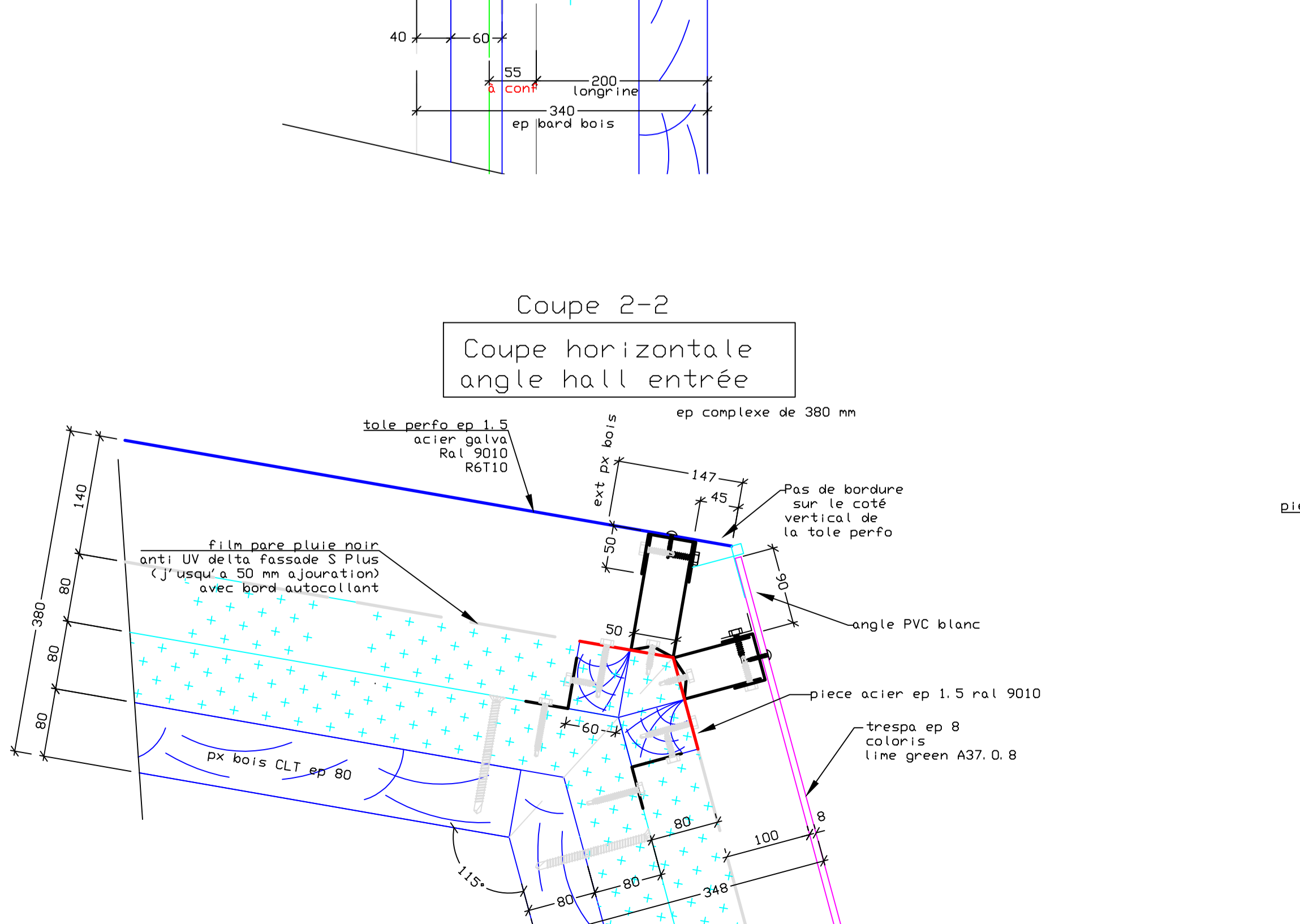
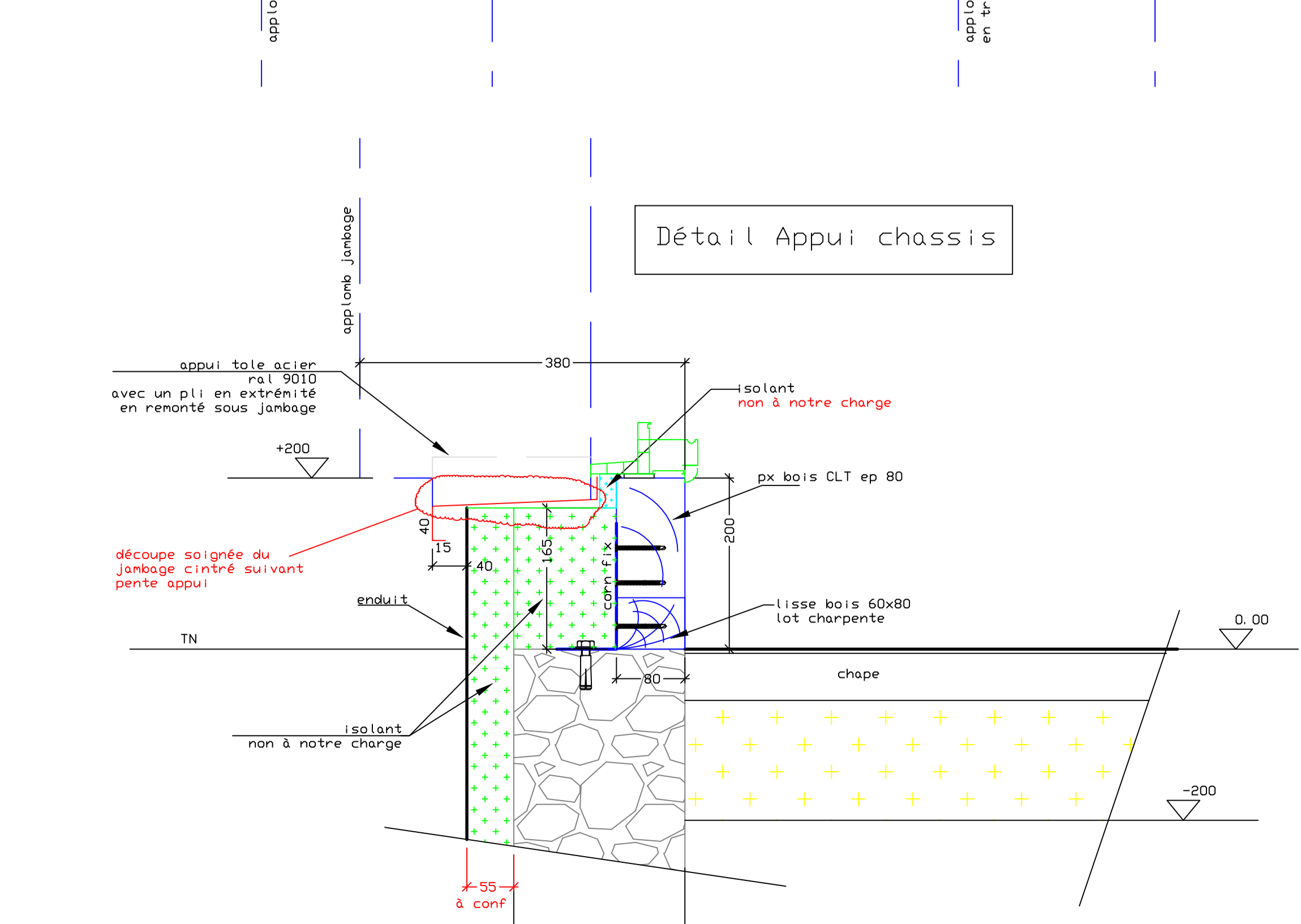
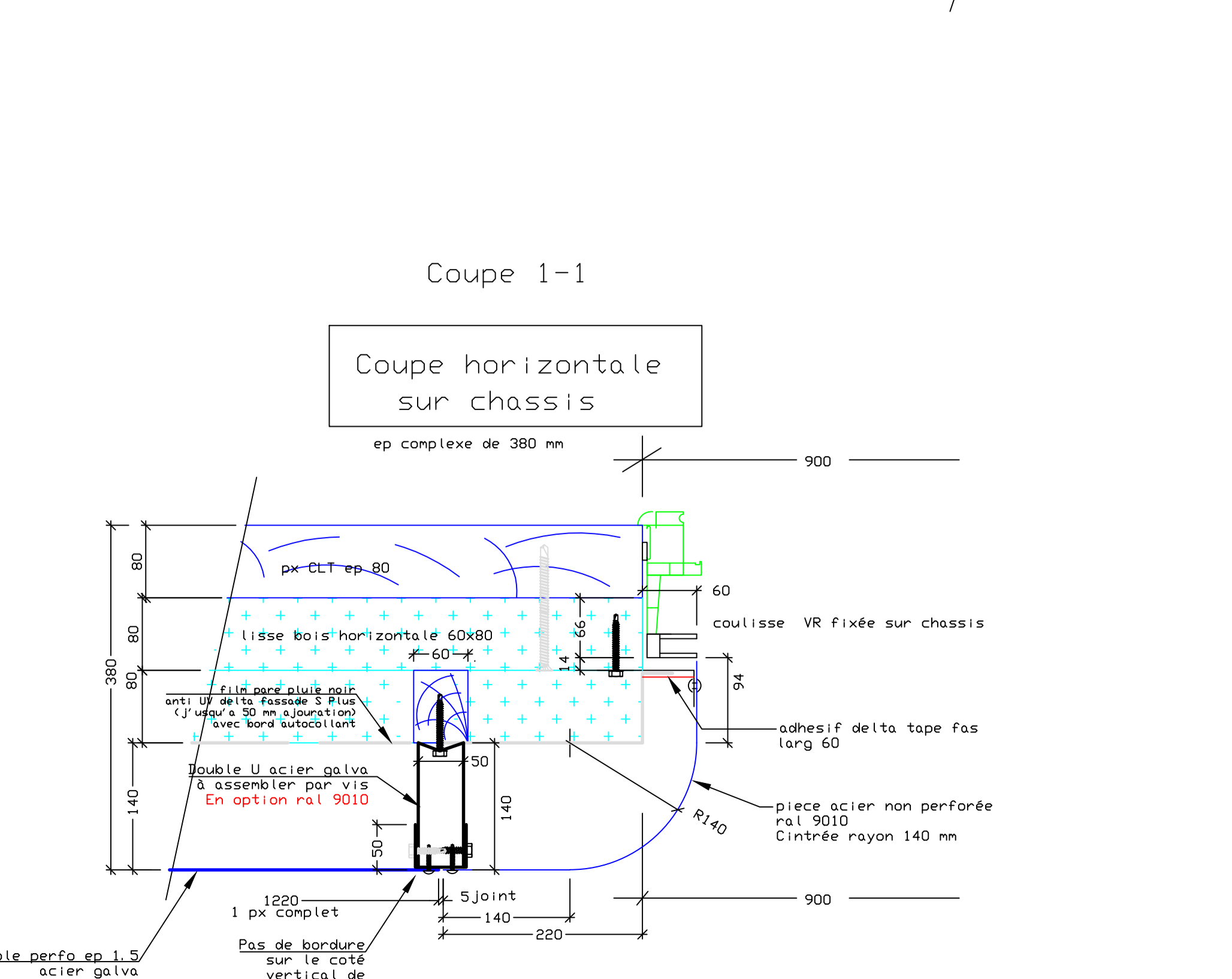
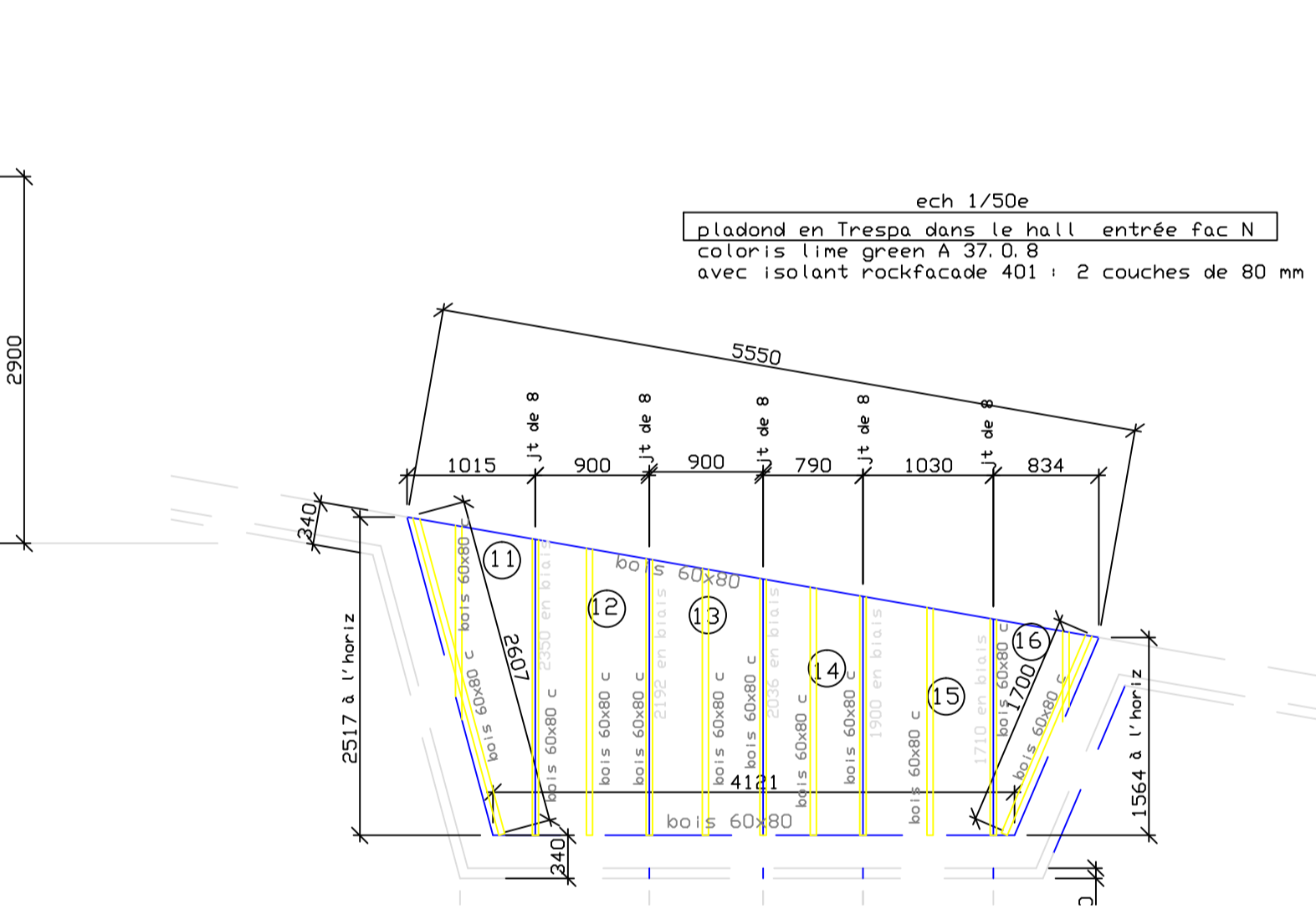
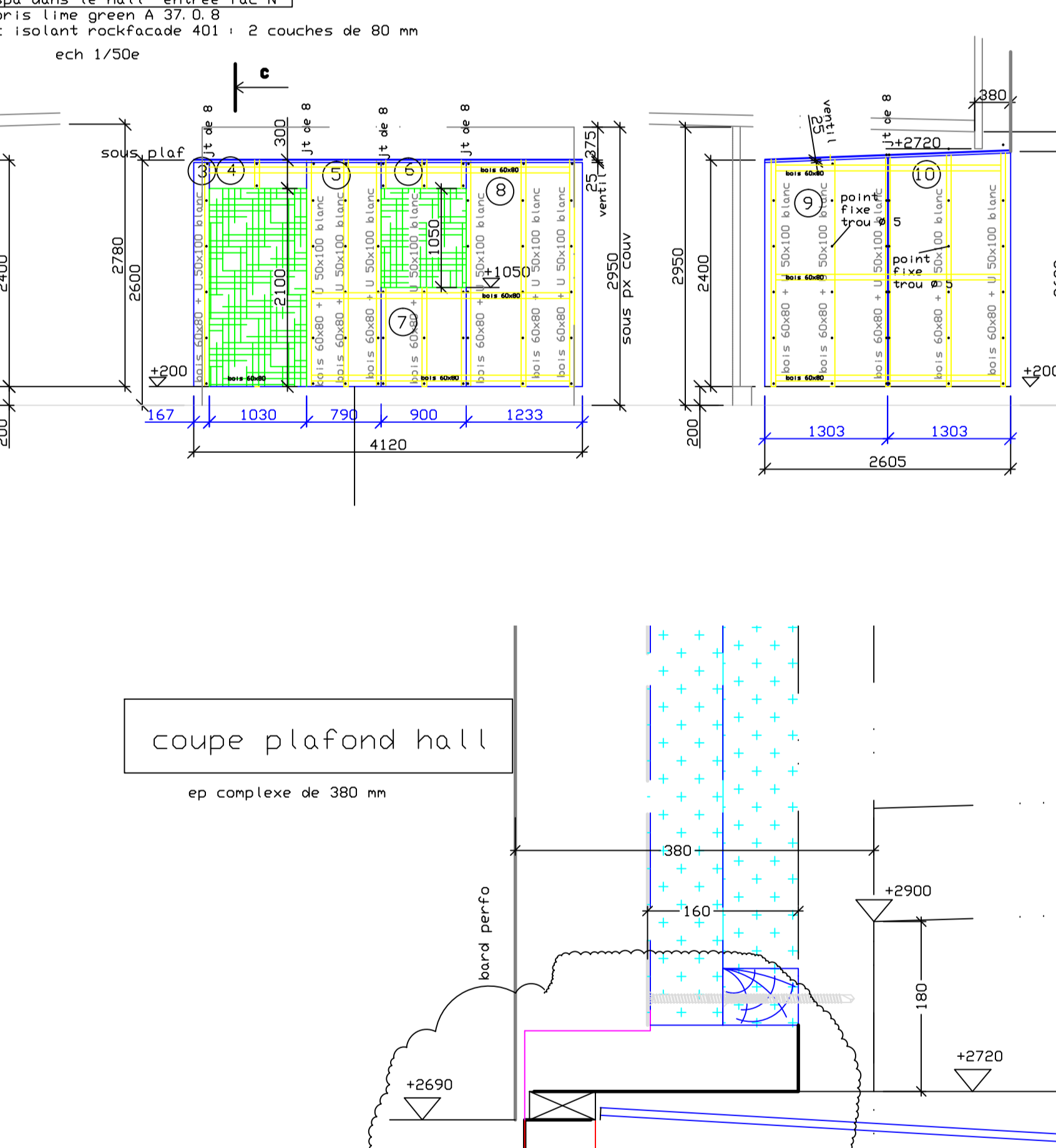
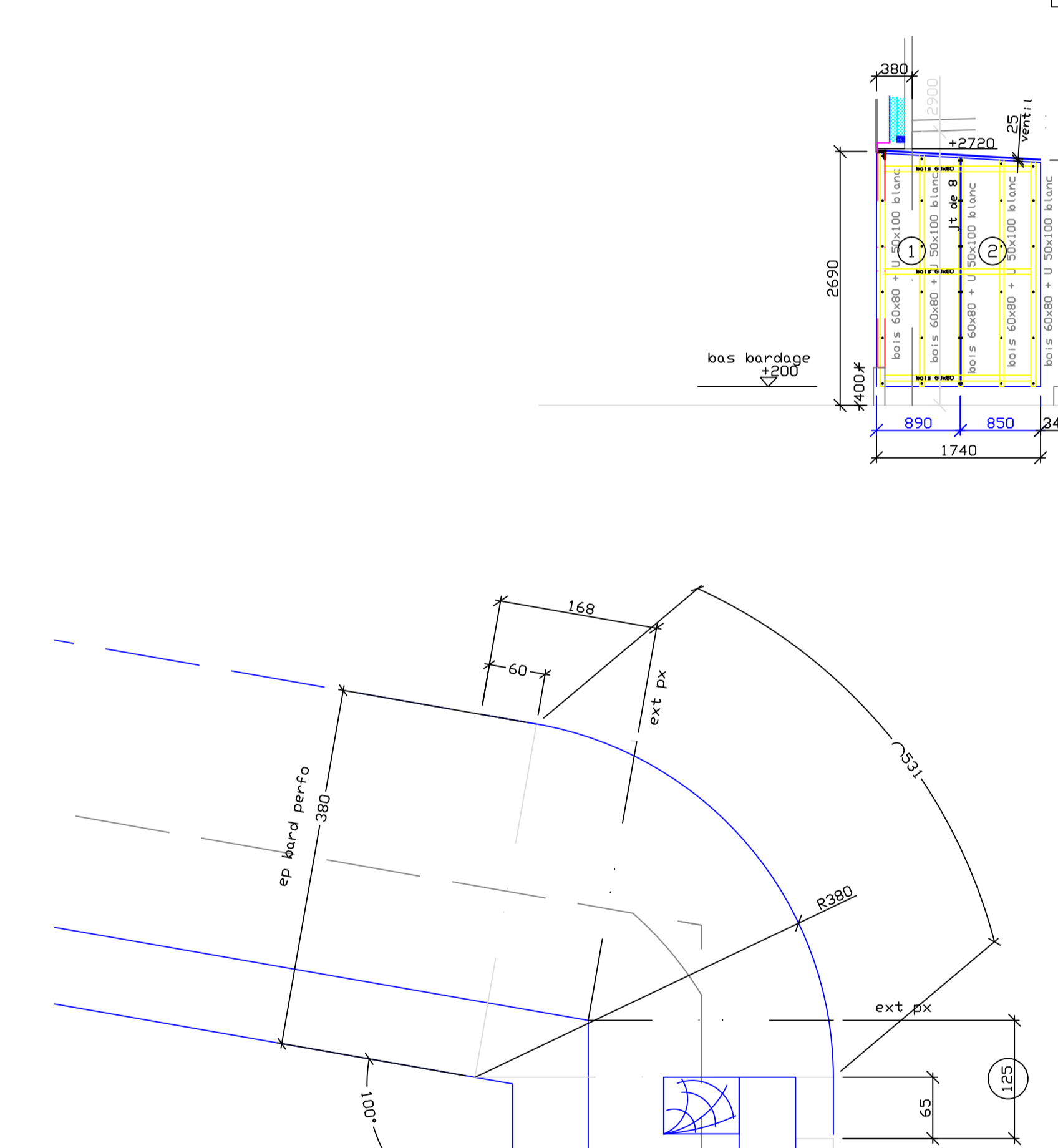
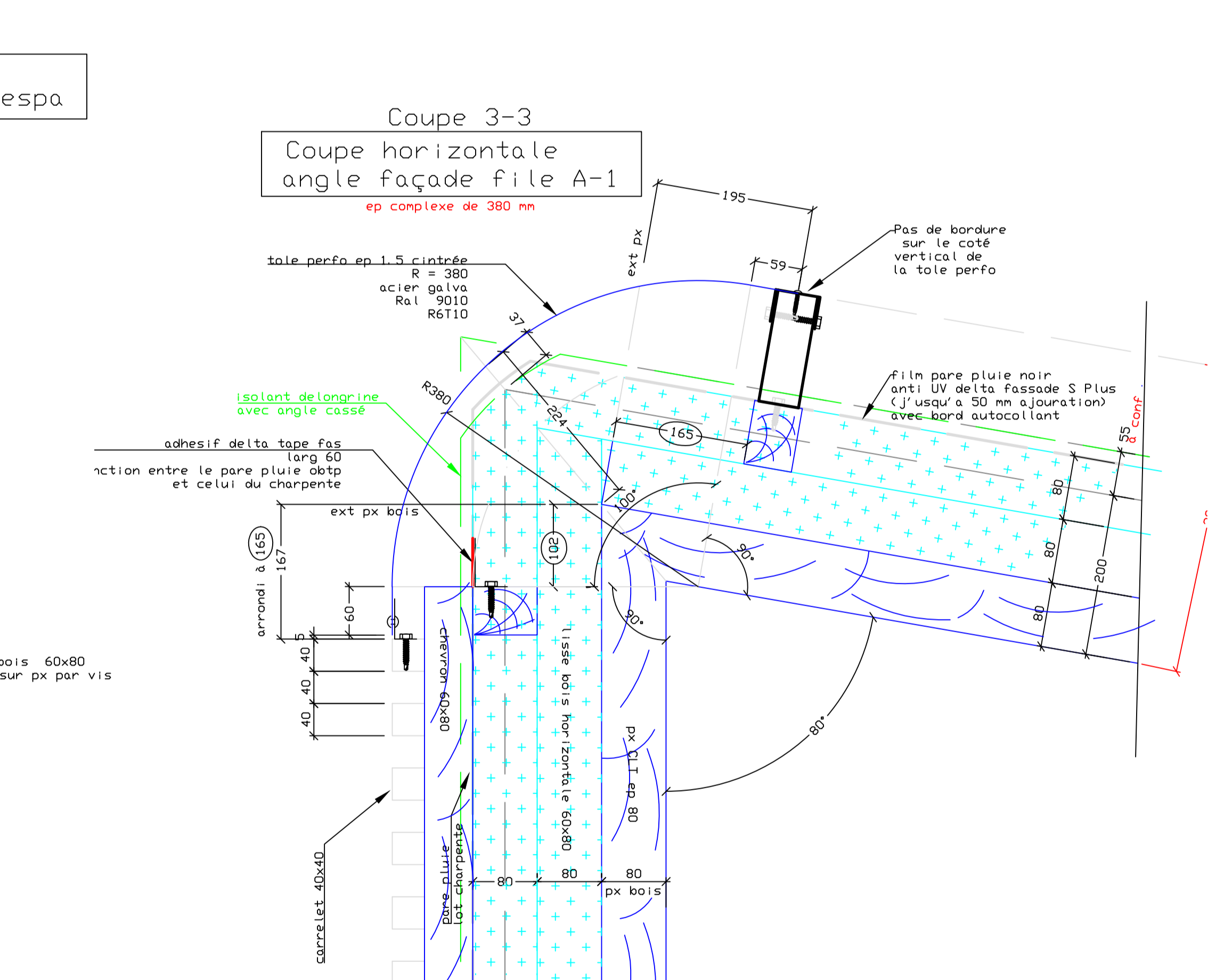
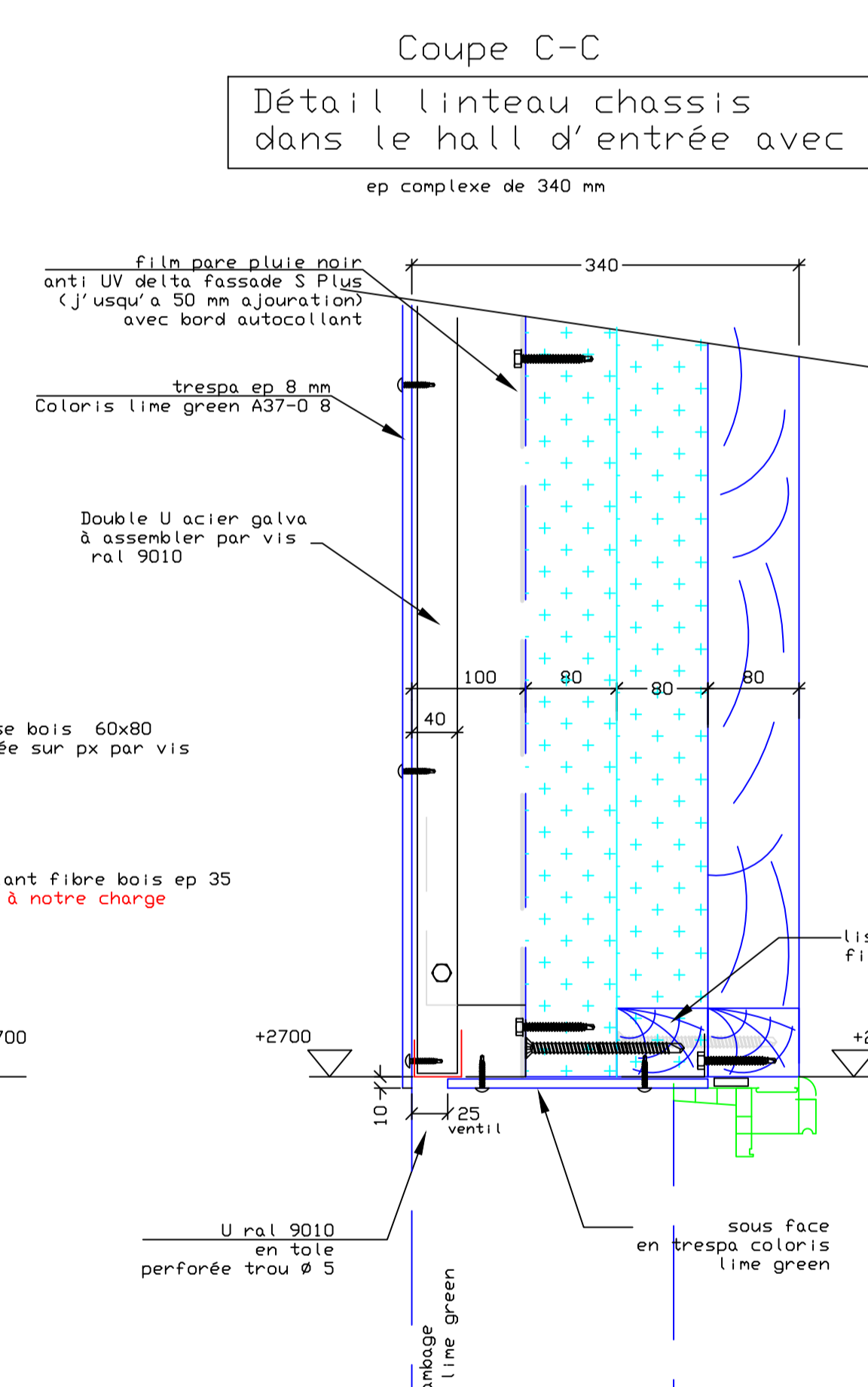
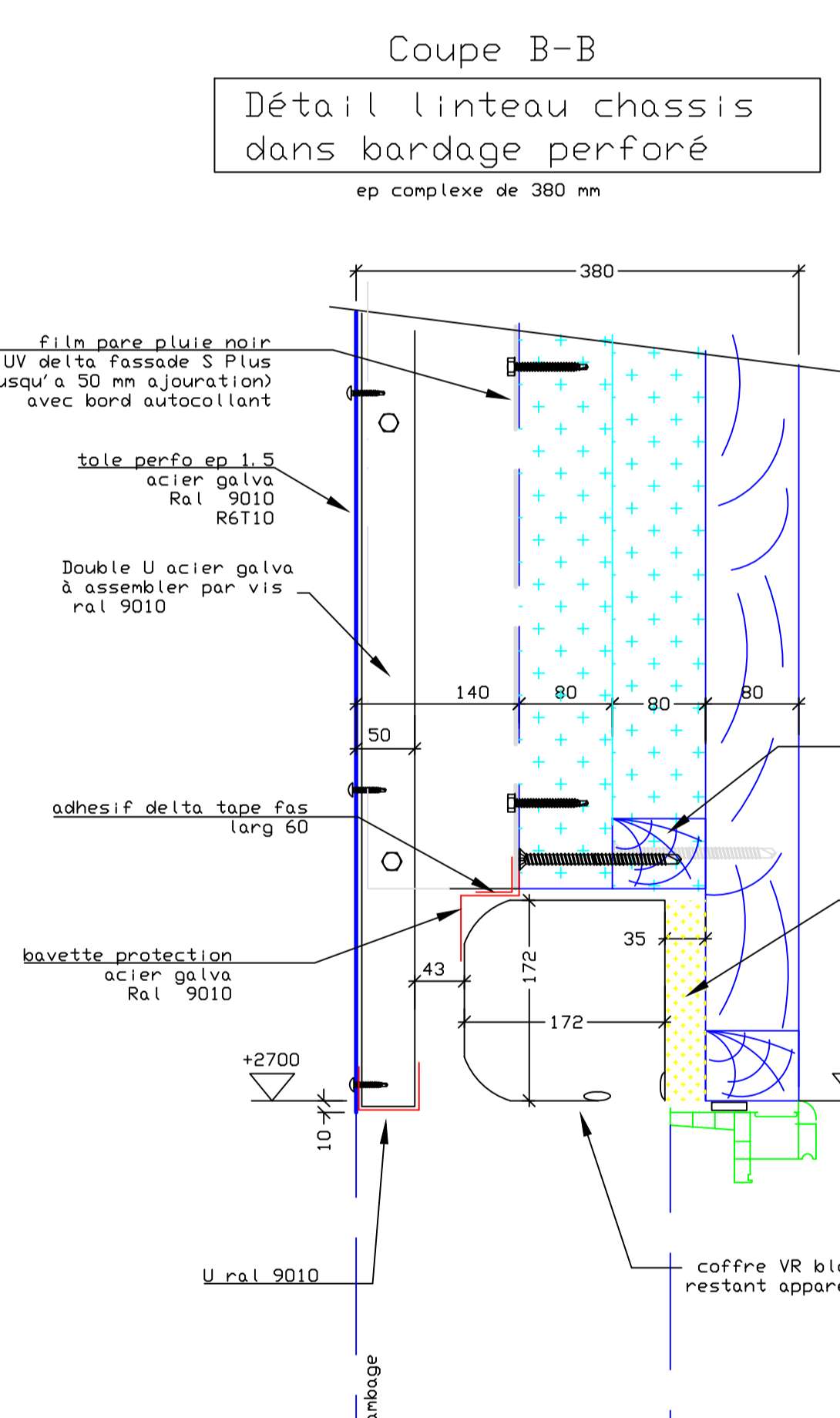
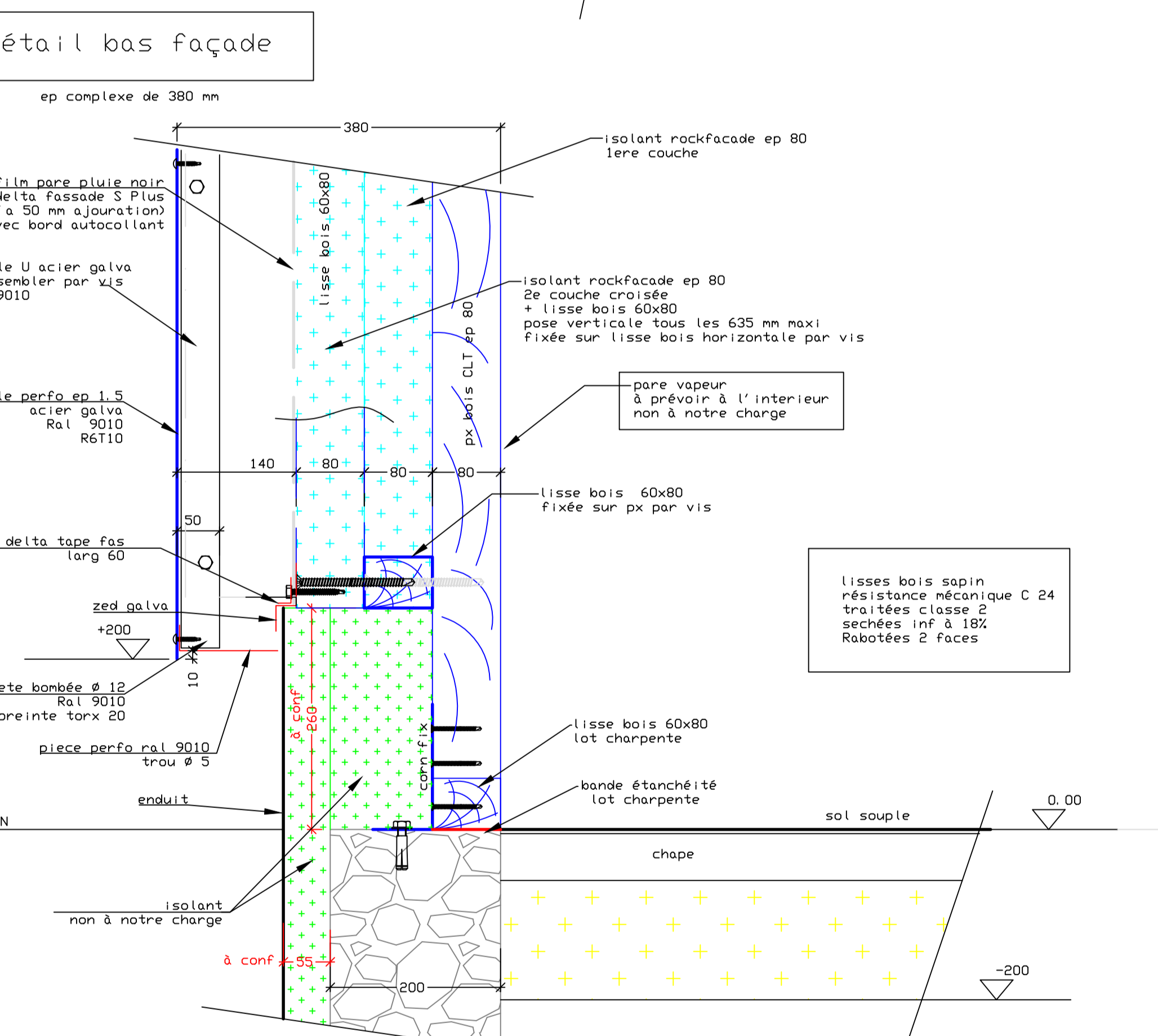
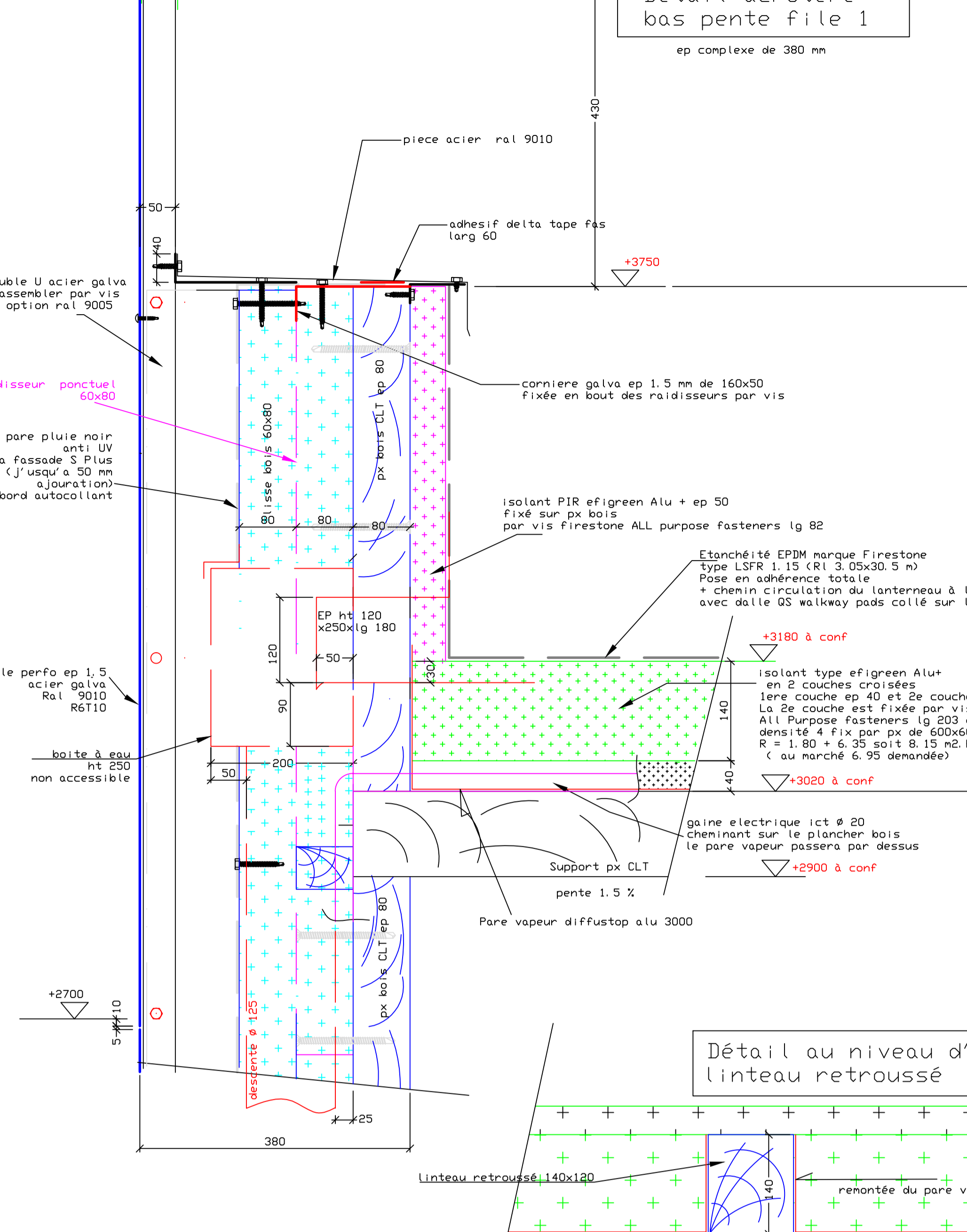
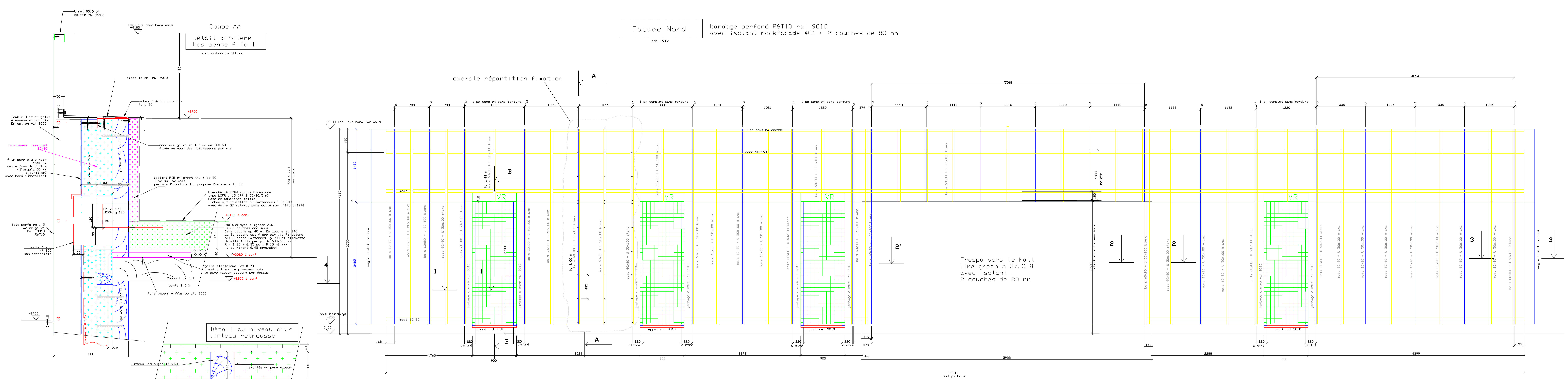


Façade Nord bardage perforé R6T10 ral 9010 avec isolant rockfacade 401 : 2 couches de 80 mm



CABINET DENTAIRE 01 BELLEY

Calepinage bardage façade nord perforé et trespa dans hall
DETAILS

Date	Ind	Modifications
28/04/2017	F	Mise à jour ep complexe bardage suite à rel sur site et rev du 27/04 ajout coupe CC linteau avec trespa
04/04/2017	E	complément info sur coupe AA
04/04/2017	D	Mise à jour suite examen BIC du 20/04 du bureau Socotec
27/03/2017	C	ajout calepinage hall entrée en trespa
27/03/2017	D	Mise à jour suite RDV du 23 mars
28/03/2017	B	Mise à jour ep complexe suite RDV du 16 mars
10/03/2017	A	Mise à jour ep complexe suite RDV du 09 mars

Date Ind Modifications

DBTP Couverture - Bardage
6 grande rue
39800 OUSSIÈRES
Tél: 0384375420
Fax: 0384375775
email: ootp2@wanadoo.FR

Date 07/03/2017
Ech: 1/50 e
Ech: 1/20 e
Ech: 1/5 e
PLAN N°2 Ind E
F. Bailly