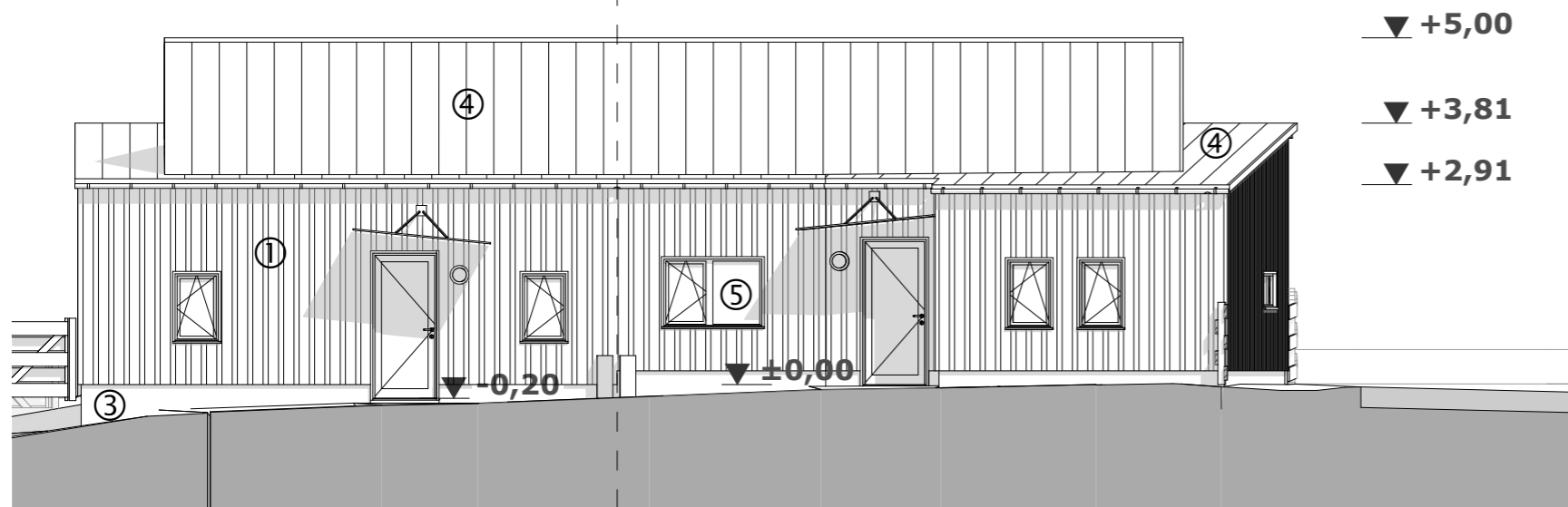
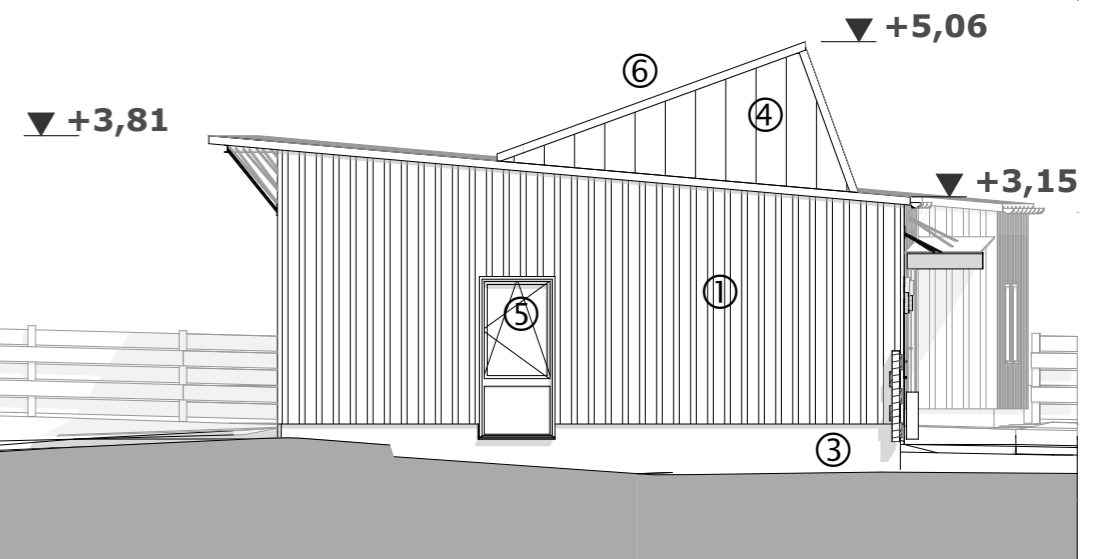


- ① - bardage bois naturel / lames + couvre-joints verticaux
- ② - panneaux type Eternit *Textura* / **b**-blanc / **t**-terracotta / **o**-ocre jaune
- ③ - béton brut
- ④ - couverture zinc
- ⑤ - menuiseries aluminium gris anthracite
- ⑥ - panneaux photovoltaïques

2.T2 | 1.T3

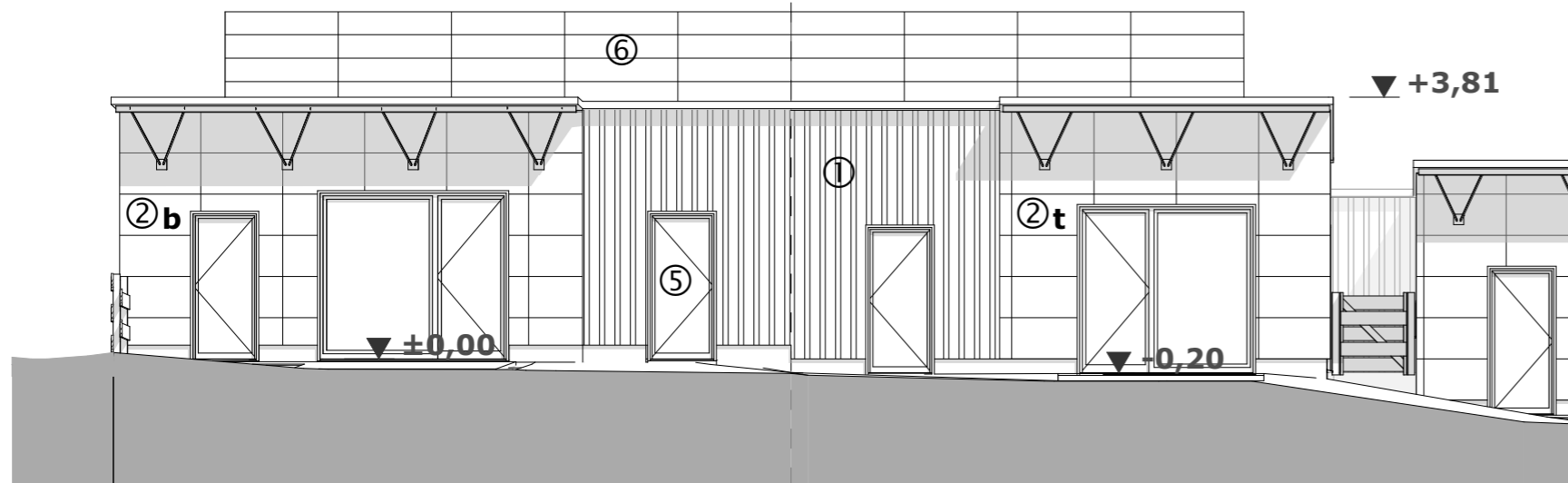


Elévation NORD

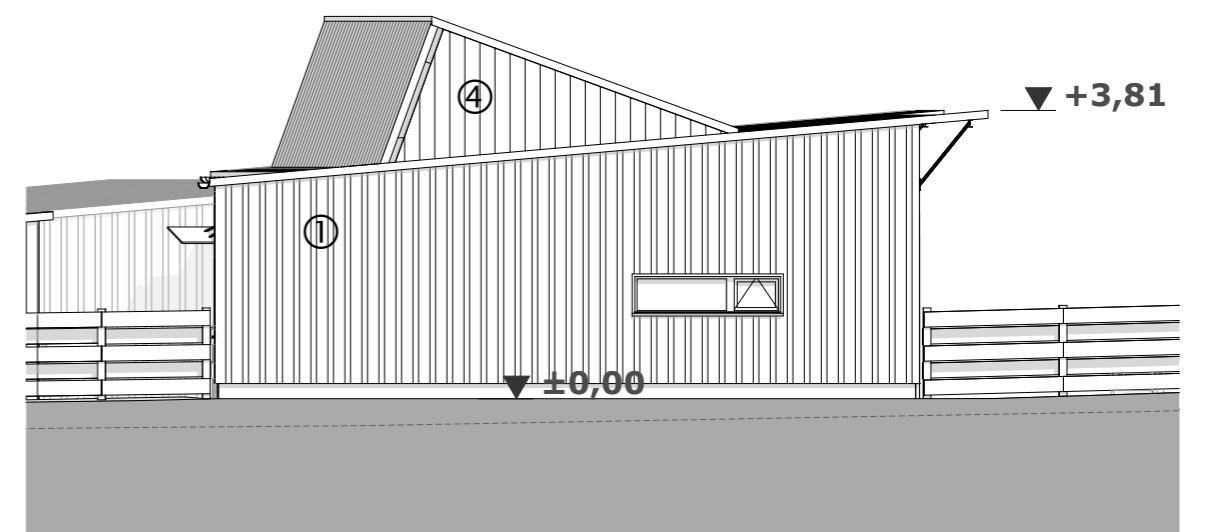


Elévation EST

1.T3 | 2.T2



Elévation SUD



Elévation OUEST

