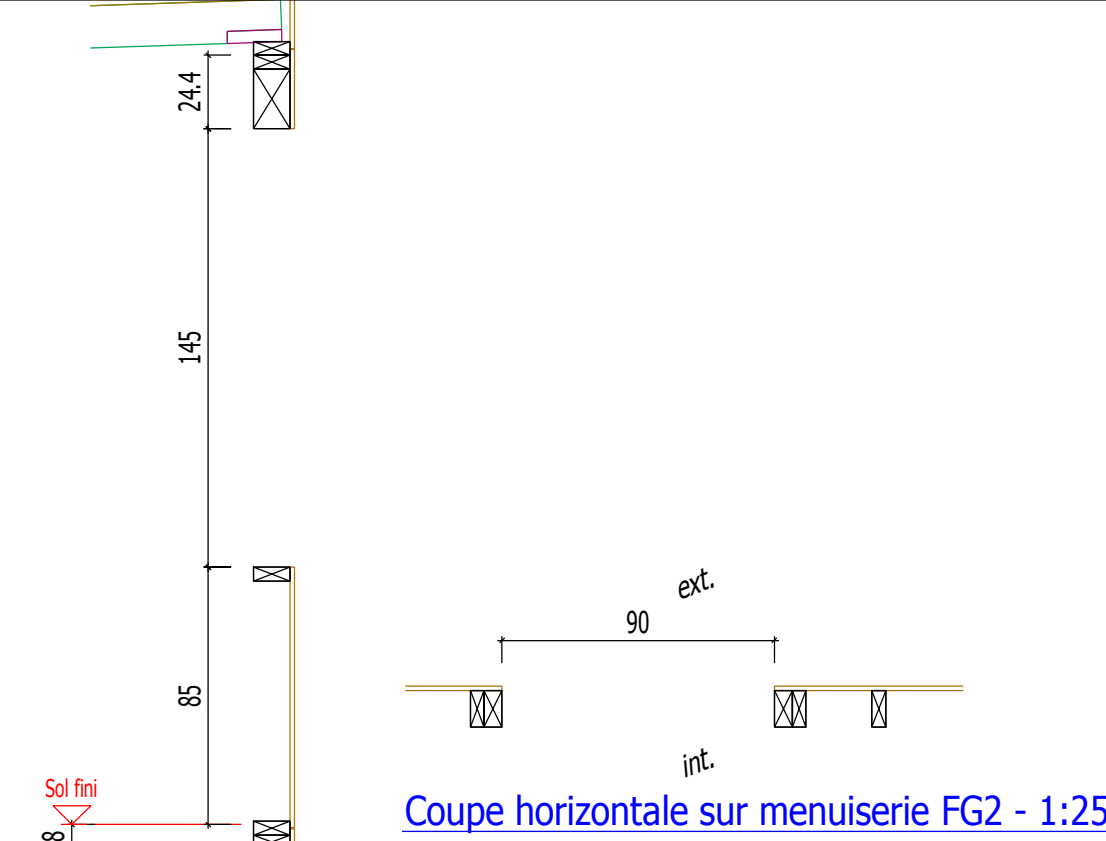
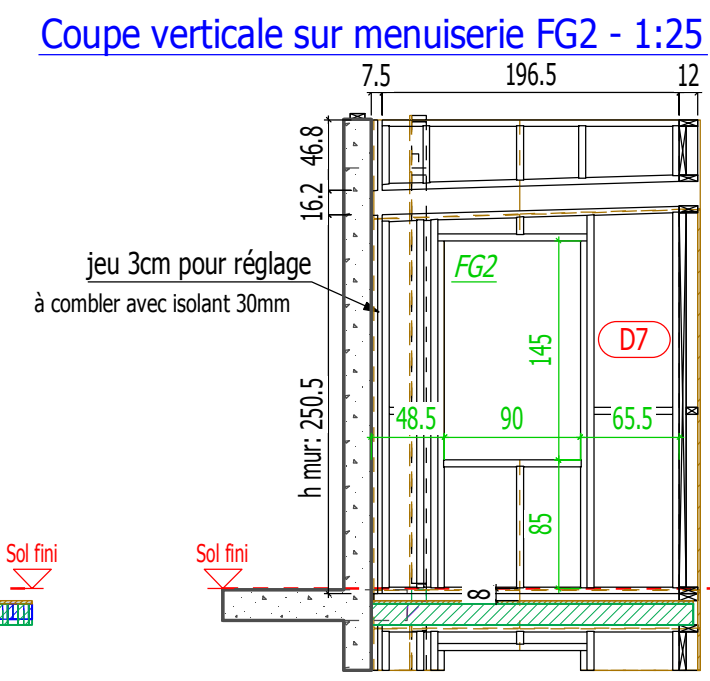


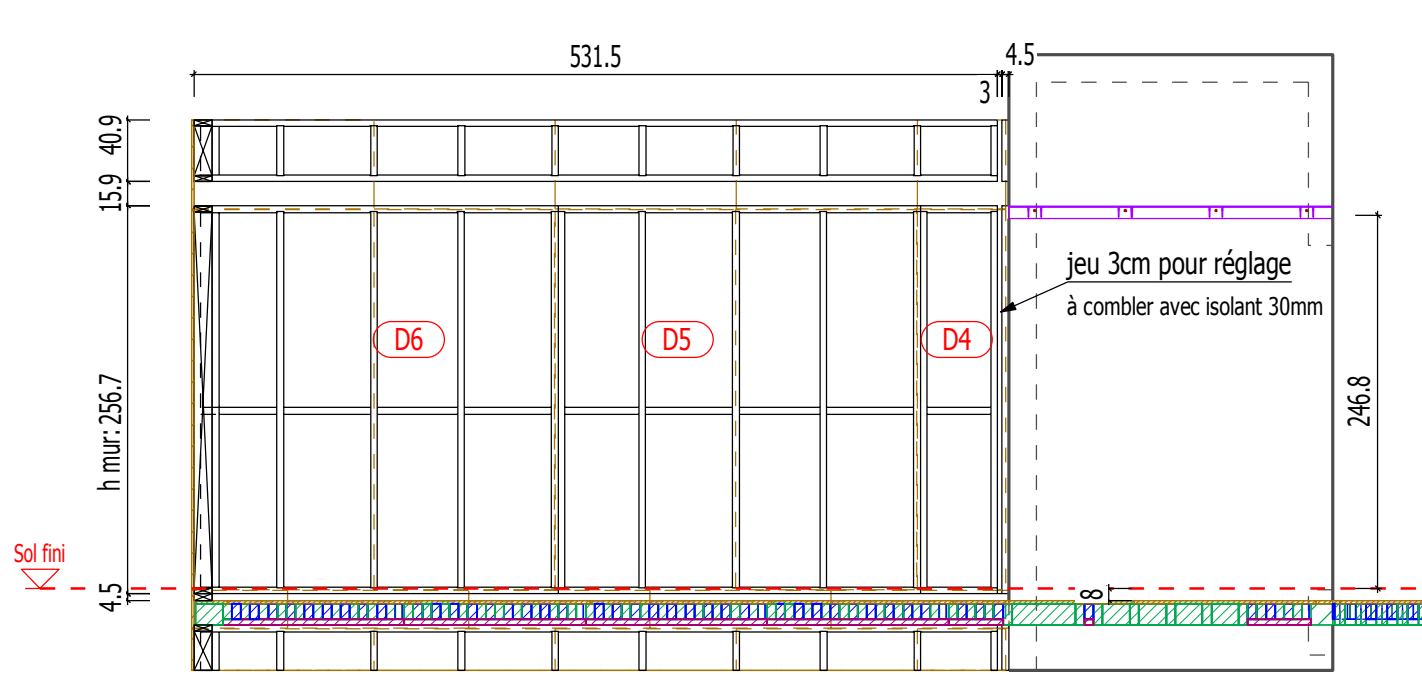
Elevation AA - 1:50 (vue de l'intérieur)



Coupe horizontale sur menuiserie FG2 - 1:25

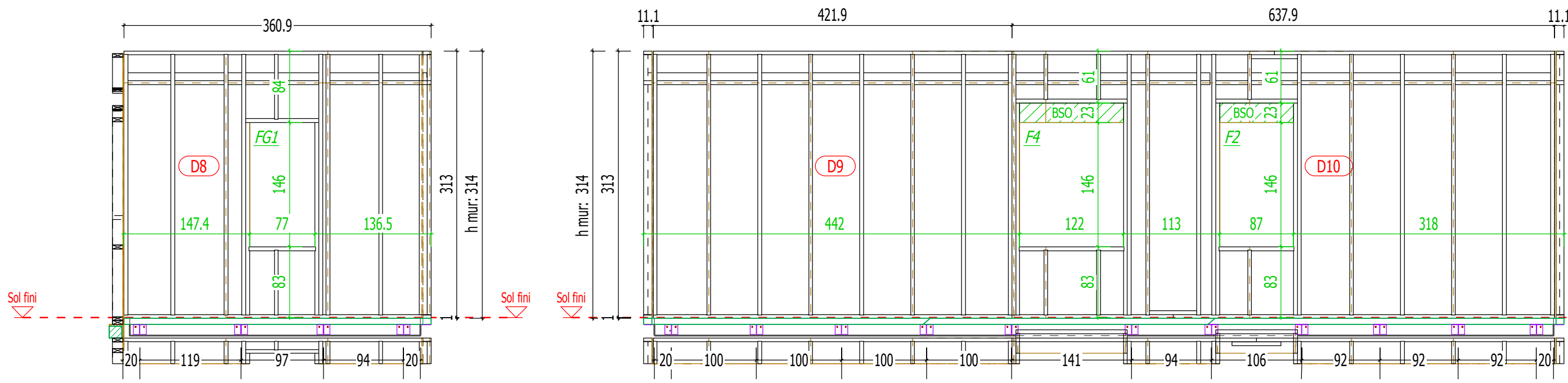


Coupe verticale sur menuiserie FG2 - 1:25



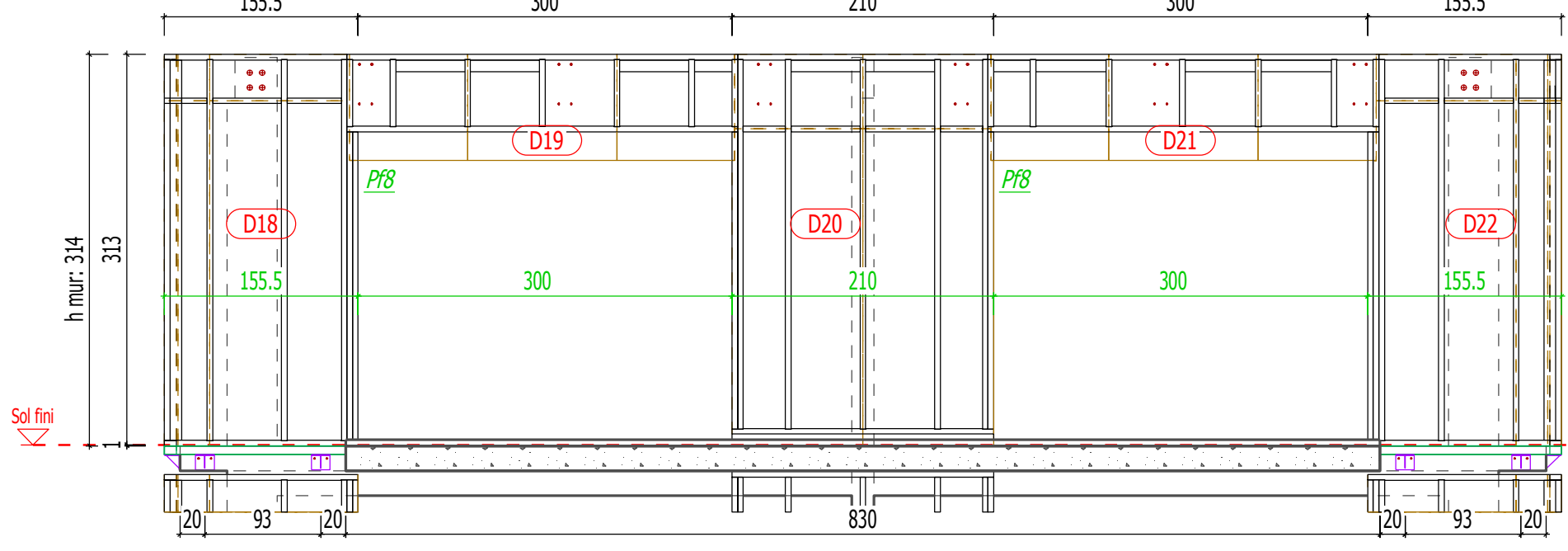
Elevation BB - 1:50 (vue de l'intérieur)

Elevation CC - 1:50 (vue de l'intérieur)

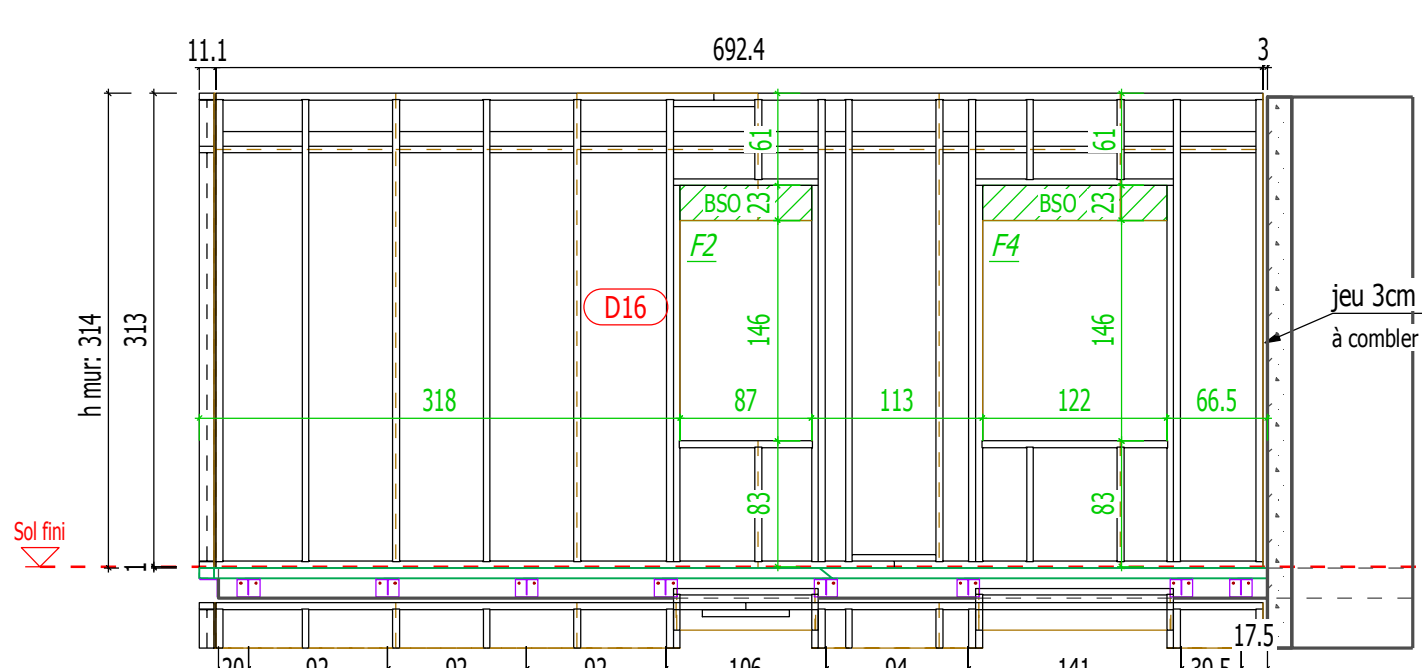


Elevation DD - 1:50

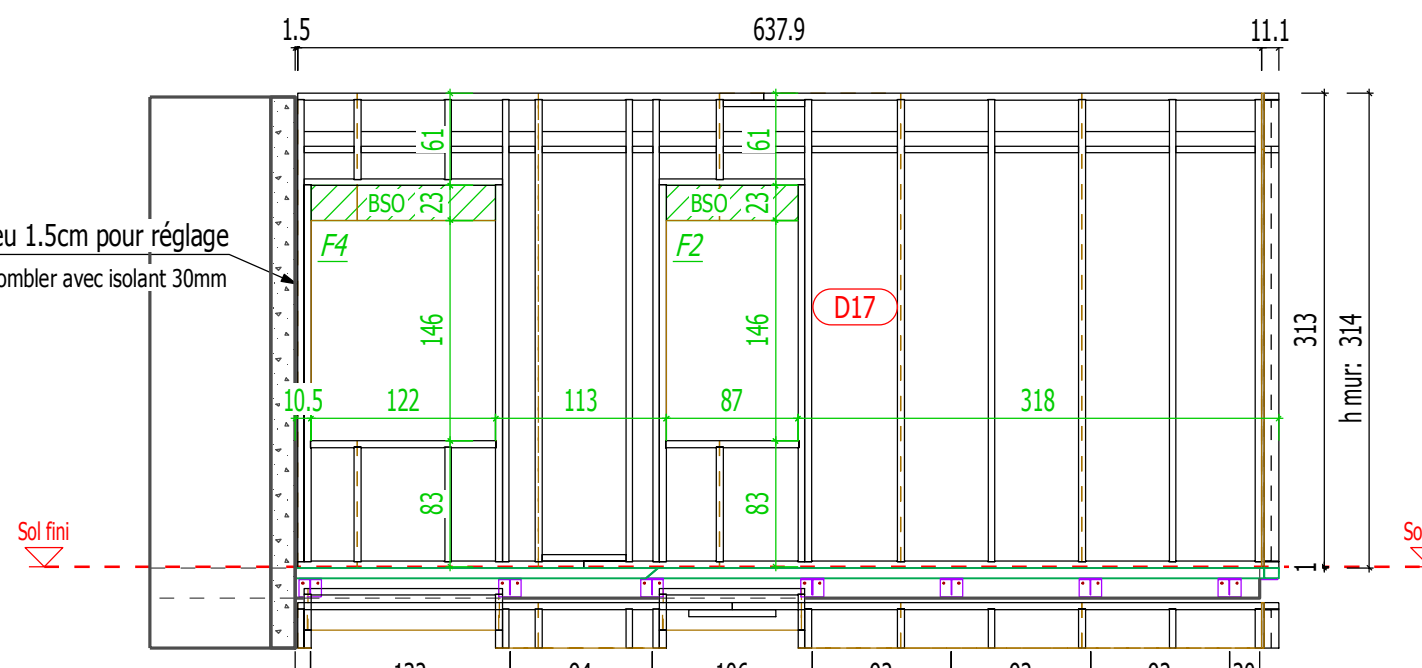
Elevation EE - 1:50



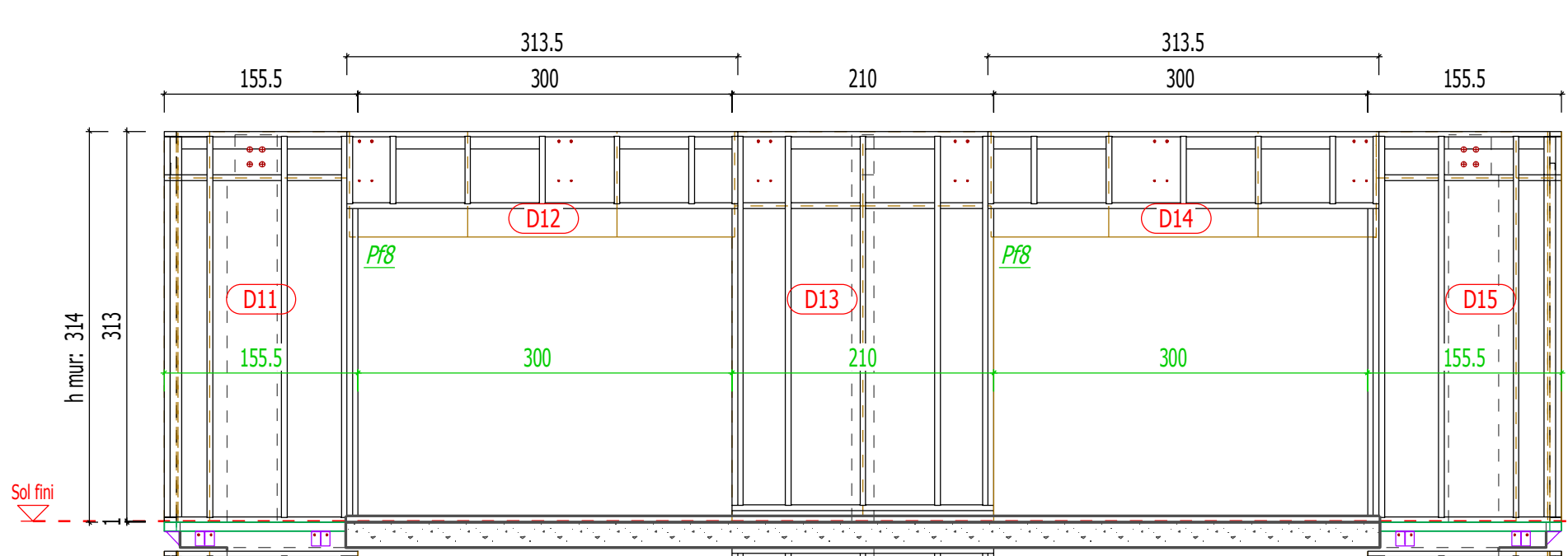
Elevation FF - 1:50



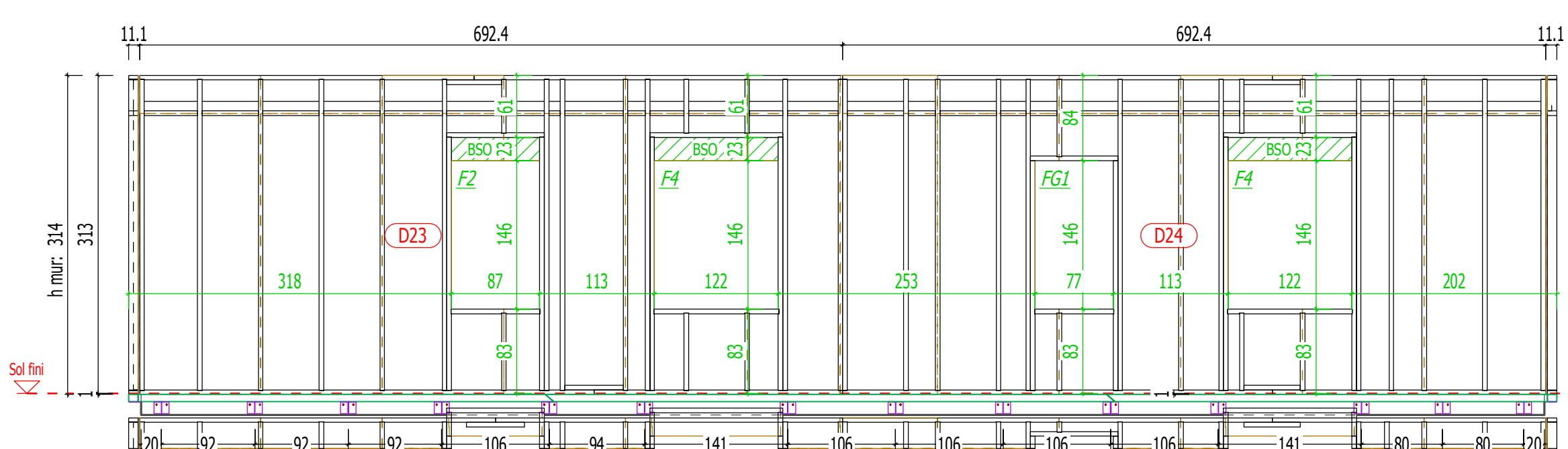
Elevation GG - 1:50



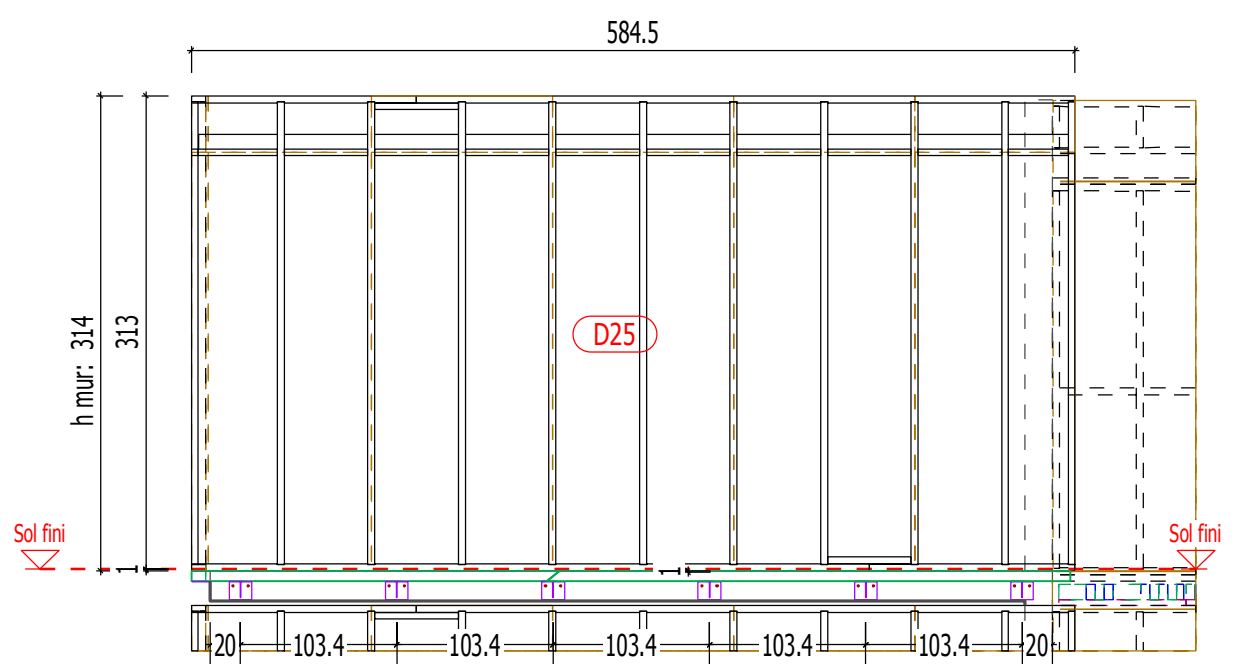
Elevation HH - 1:50



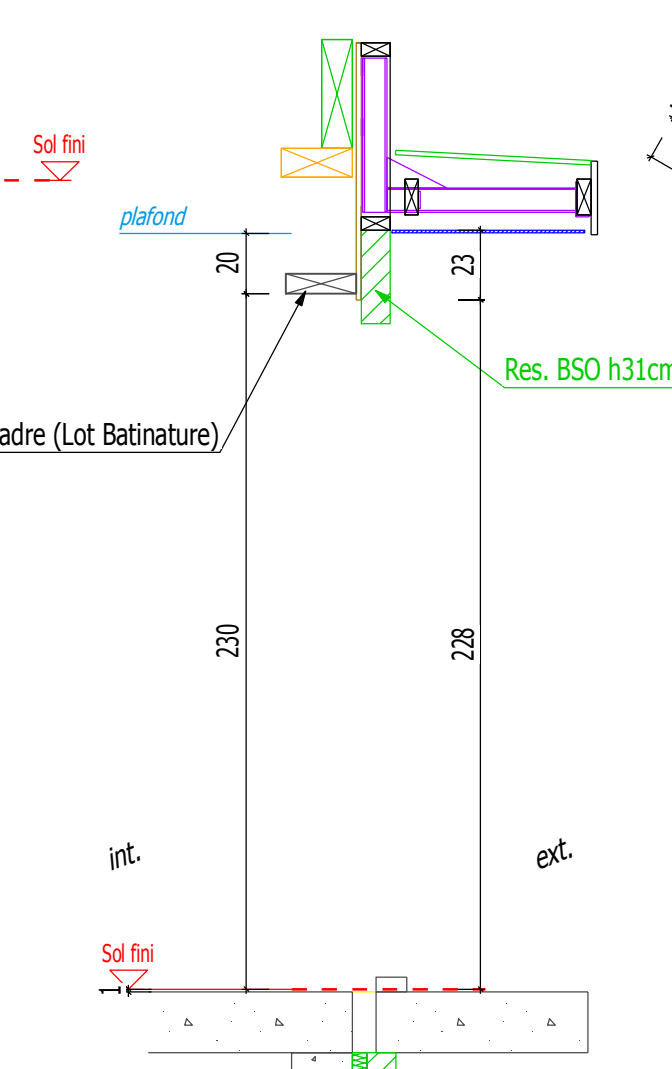
Elevation II - 1:50



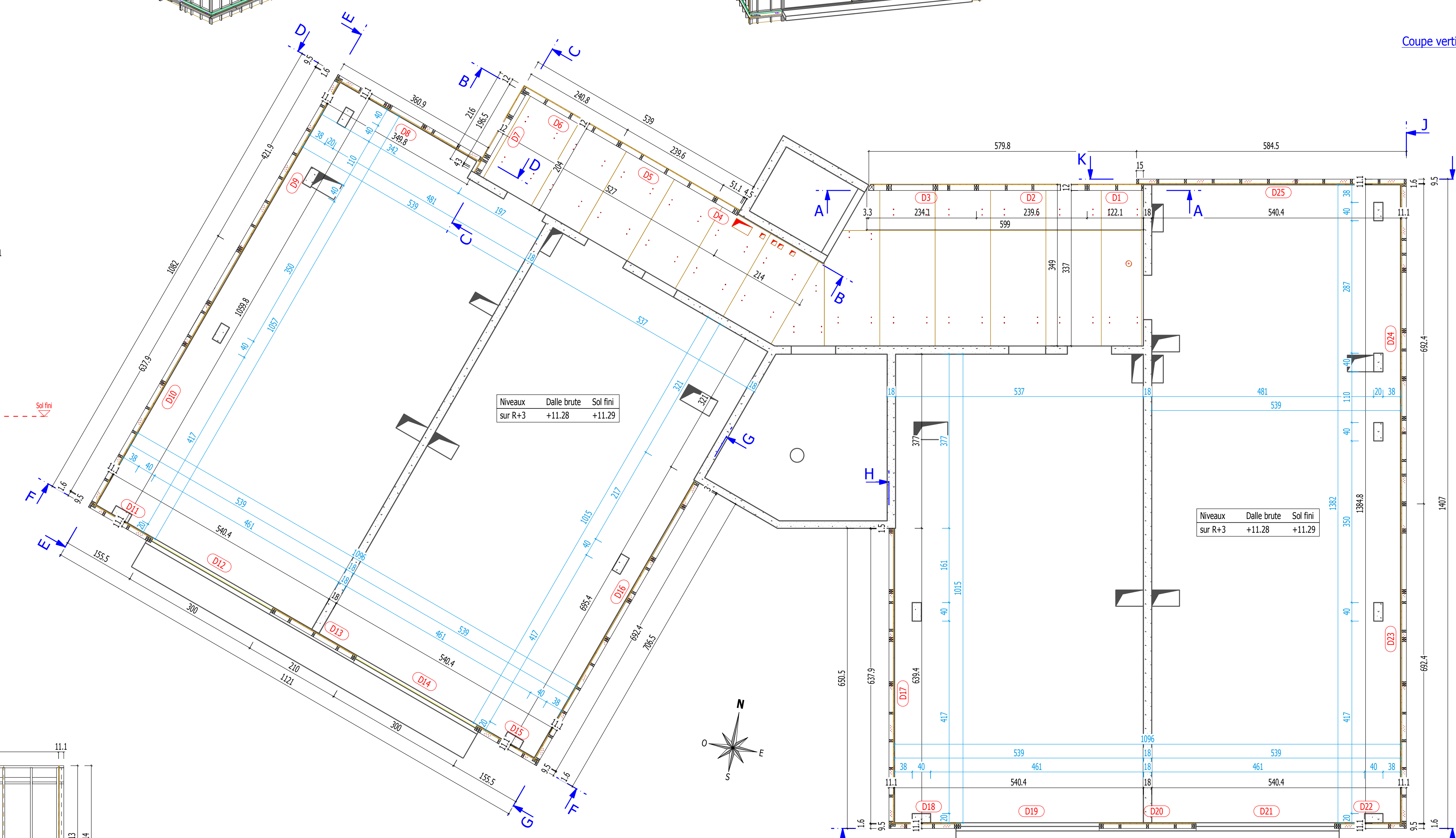
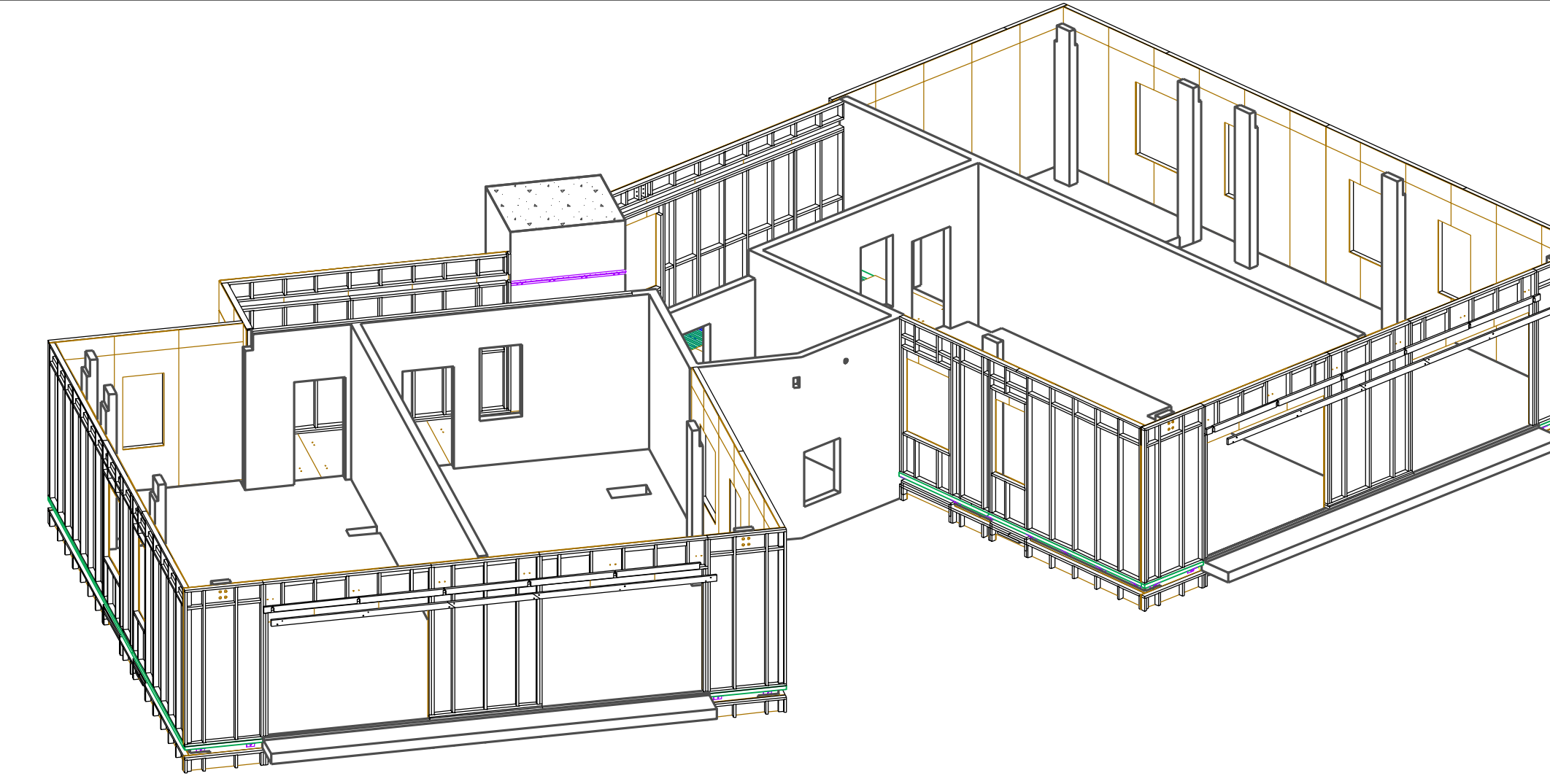
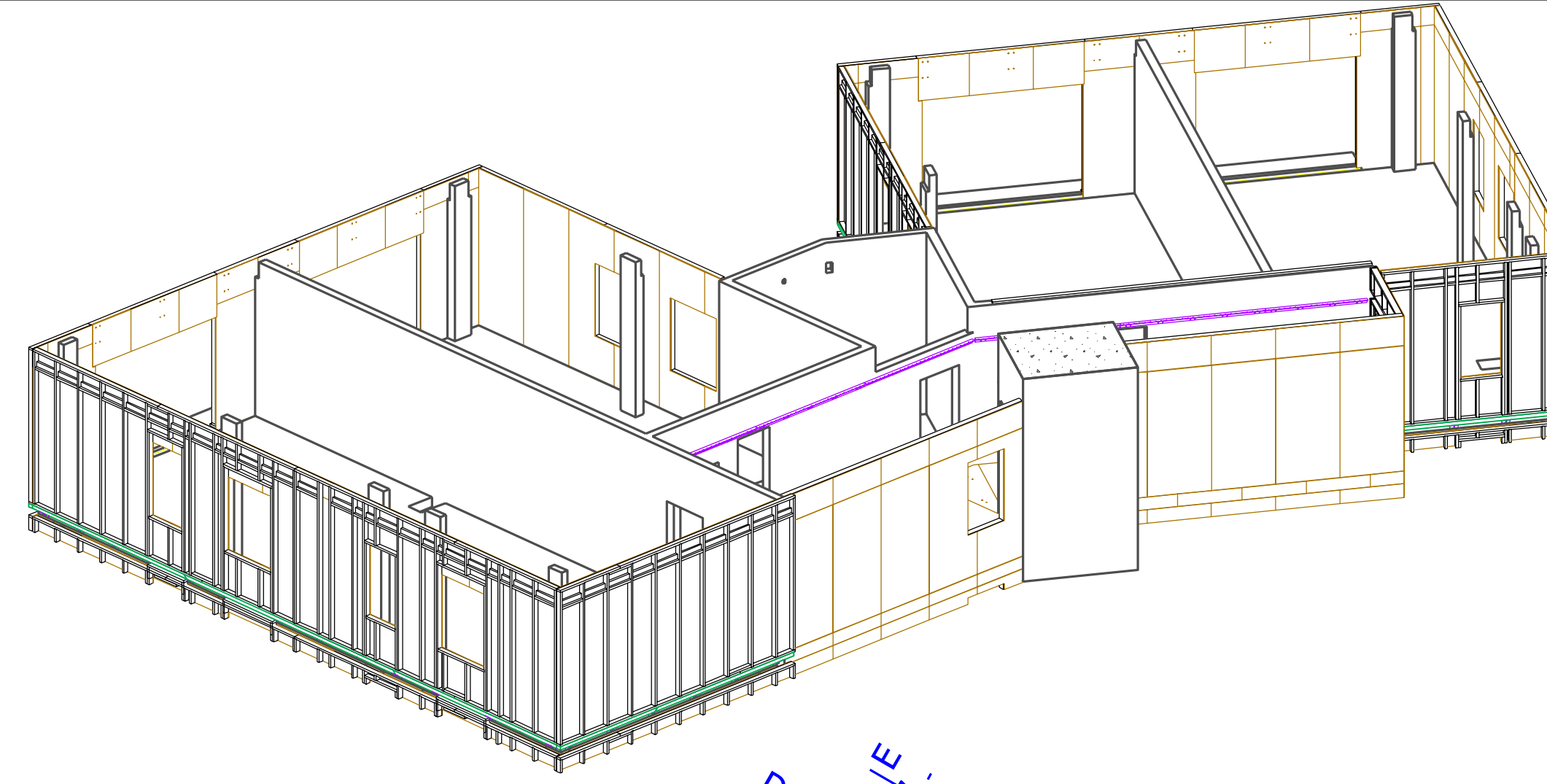
Elevation JJ - 1:50



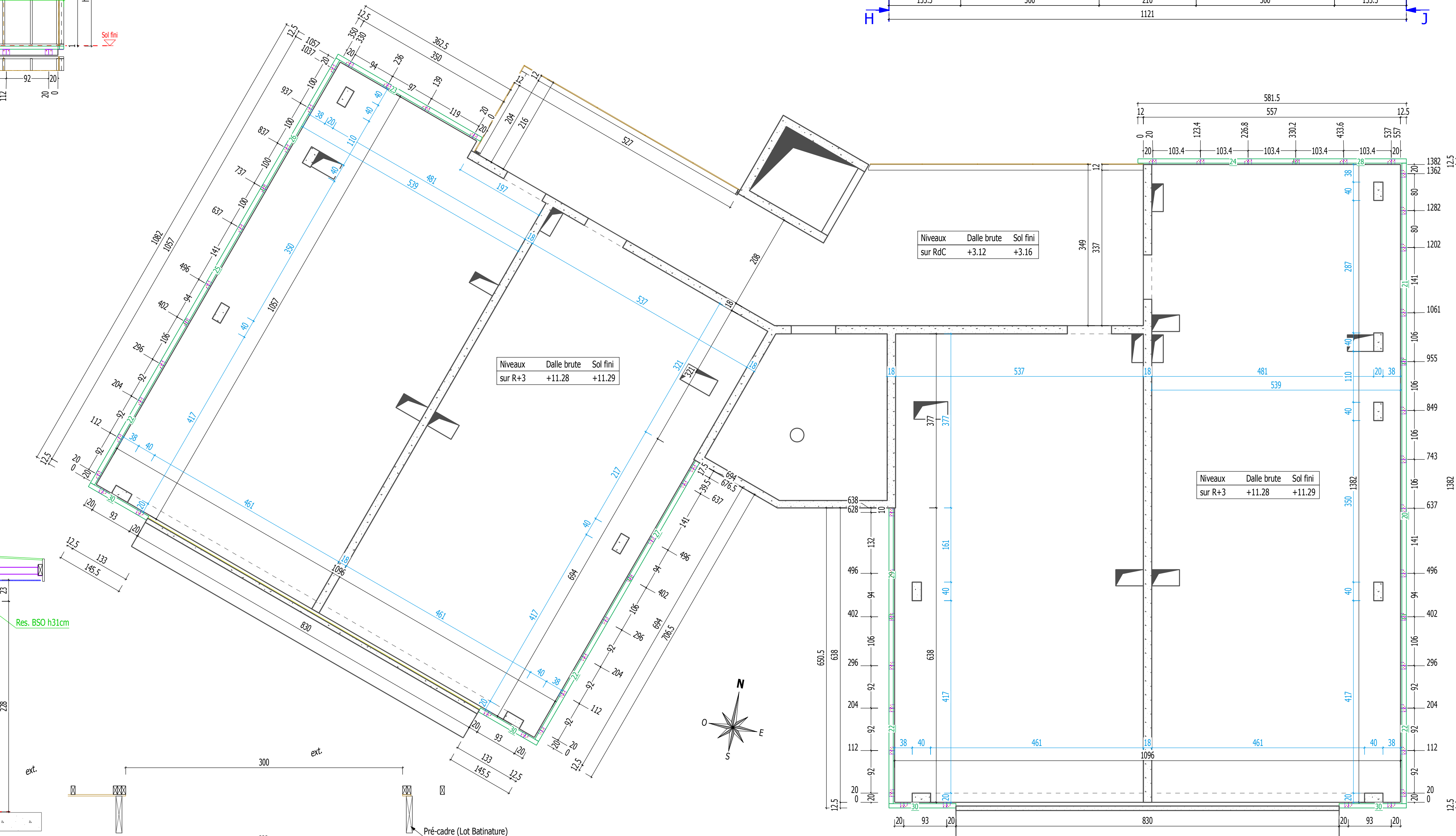
Elevation KK - 1:50



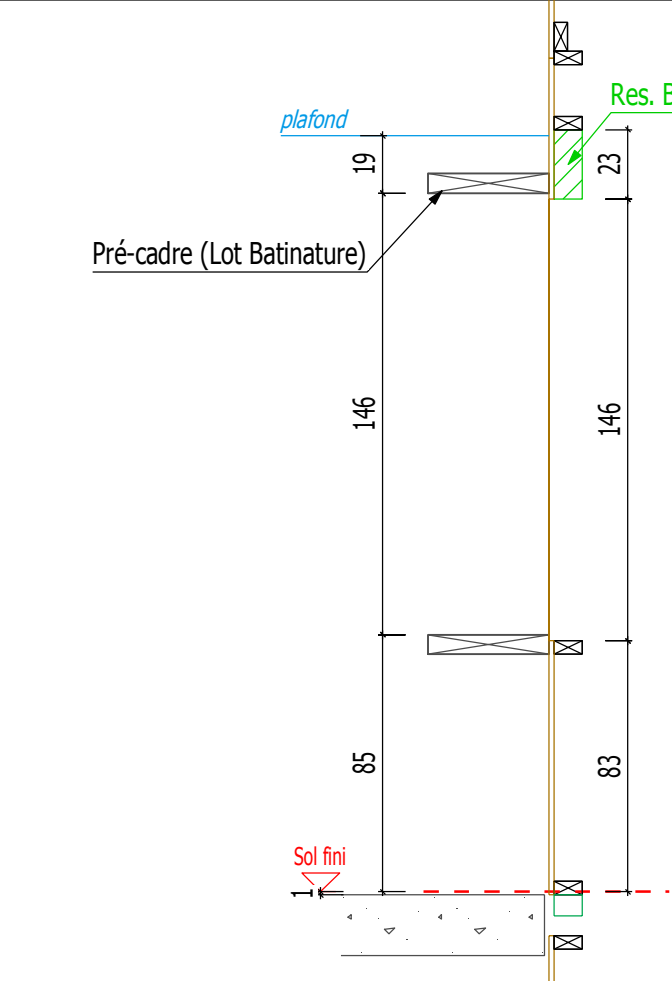
Coupe verticale sur menuiserie PF8 - 1:25



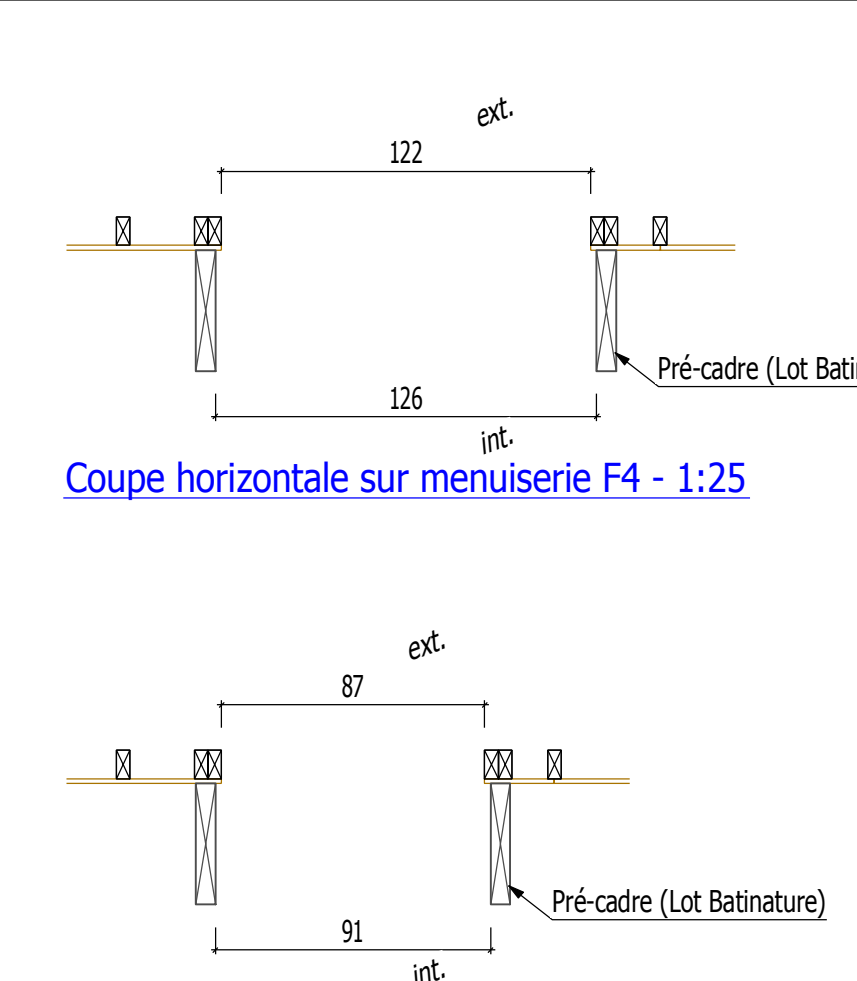
Vue en plan - 1:50



Implantation des equerres et des semelles - 1:50

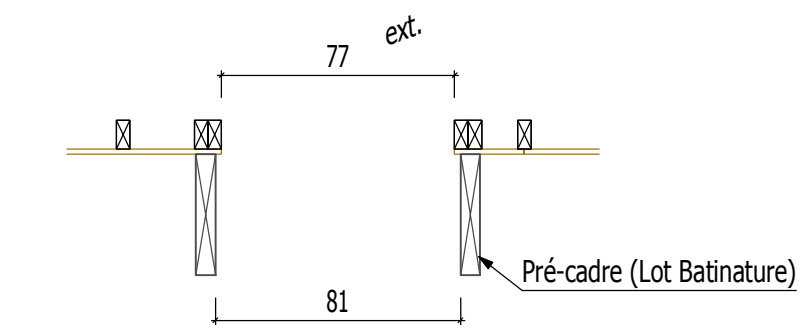


Coupe verticale sur menuiserie FG1, F2, F4 - 1:25

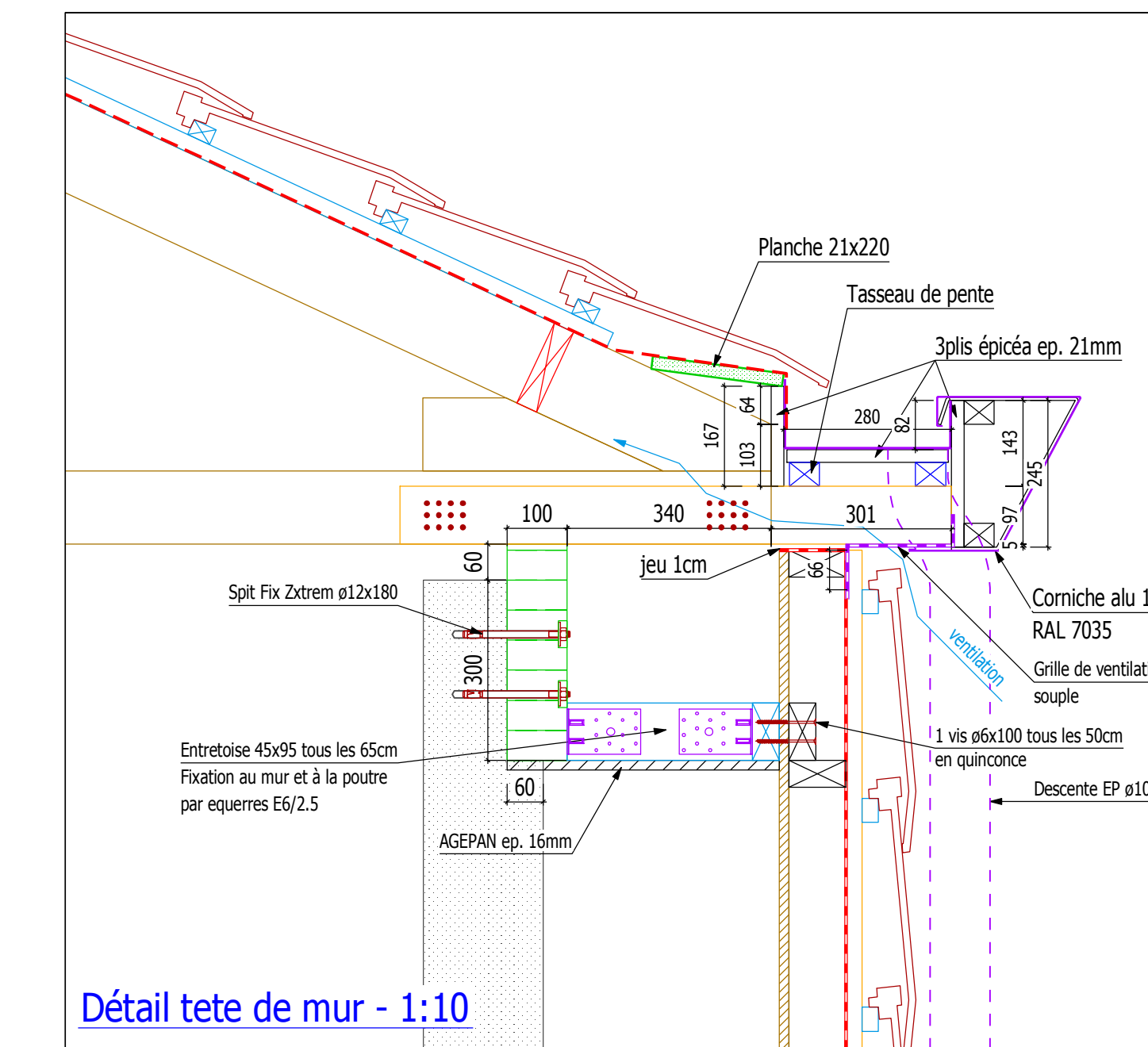


Coupe horizontale sur menuiserie F4 - 1:25

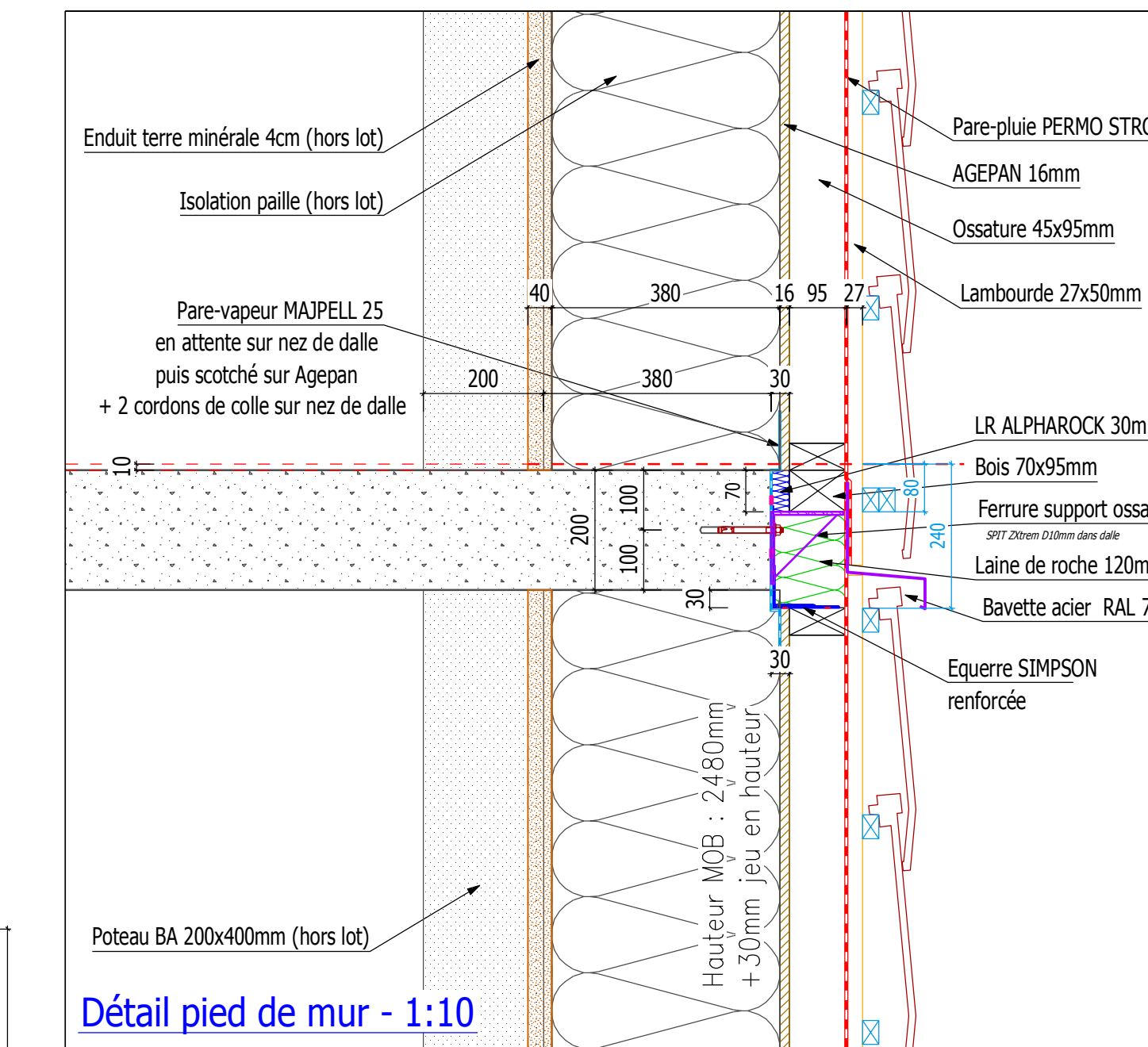
Coupe horizontale sur menuiserie F2 - 1:25



Coupe horizontale sur menuiserie F1 - 1:25



Détail tete de mur - 1:10



Détail pied de mur - 1:10

**FVRAT**  
CONSTRUCTION BOIS

84 route du Lac • 74550 ORCIER  
Tél: 04 50 73 91 23 • Fax: 04 50 70 53 77 • Mail: be@fvrat.fr

MAÎTRE D'OUVRAGE : SAS CHAMAREL "Les Barges"

ARCHITECTE : ARKETYPE STUDIO ARCHITECTES

15 455

Les BARGES

R+4

Plan et élévations

CONDITIONS D'ETUDES		
Couverture.....	-Tuiles + liteaux	Poids: -50 kg / m <sup>2</sup>
Plafond.....	-2*BA13-isolant	Poids: -37 kg / m <sup>2</sup>
Zone de neige.....	A2	Altitude: < 200 m
Zone de vent.....	2	Site: Normal
Zone sismique.....	2	Cat.: II

INDICE	Ech: 1:50, 1:25		Dessinateur : Sebastien MORIN
	A	B	
A	Date: 30/06/2016	MODIFICATIONS	
B	- 18/07/2016	- Plan de pose: rP, etc....	