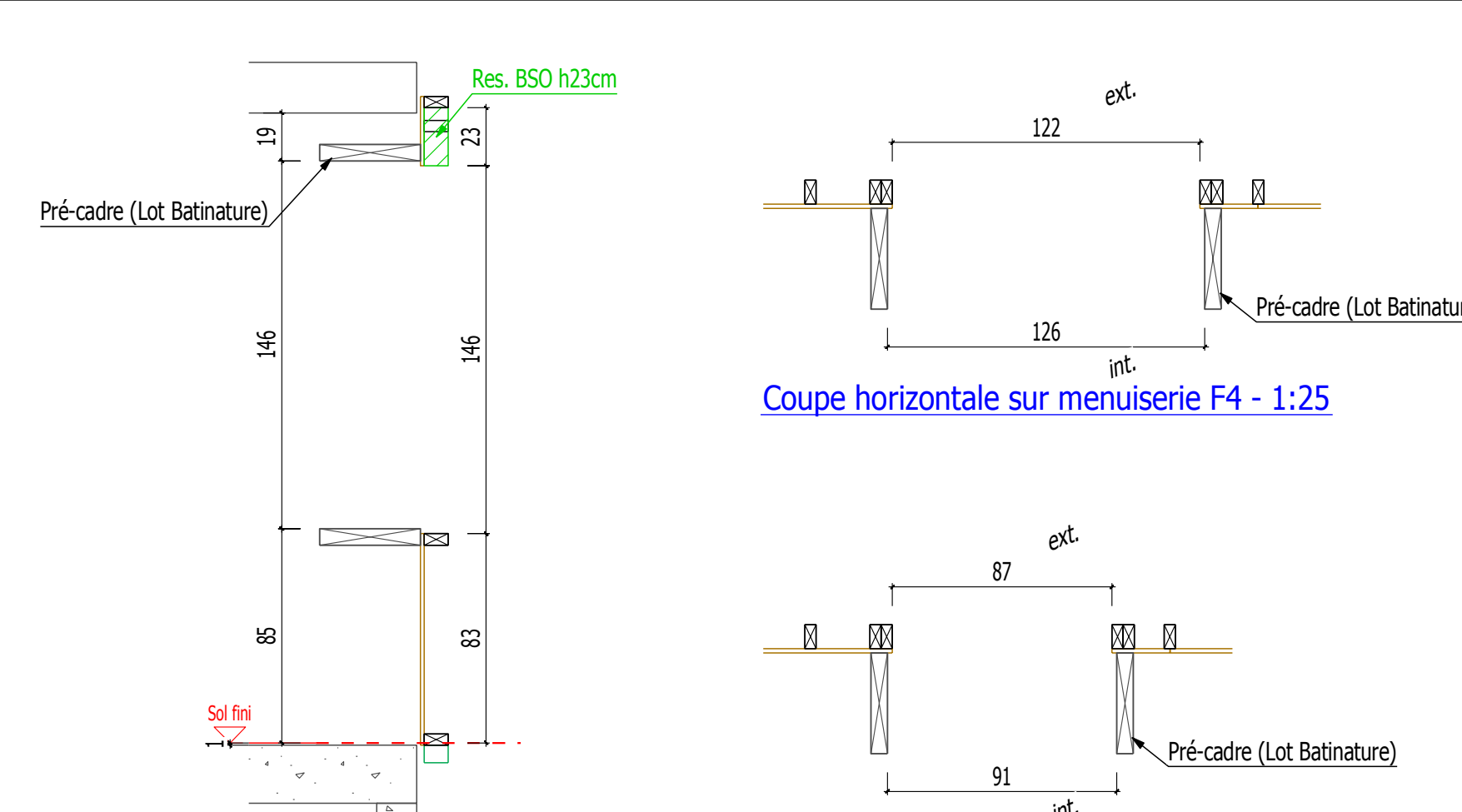
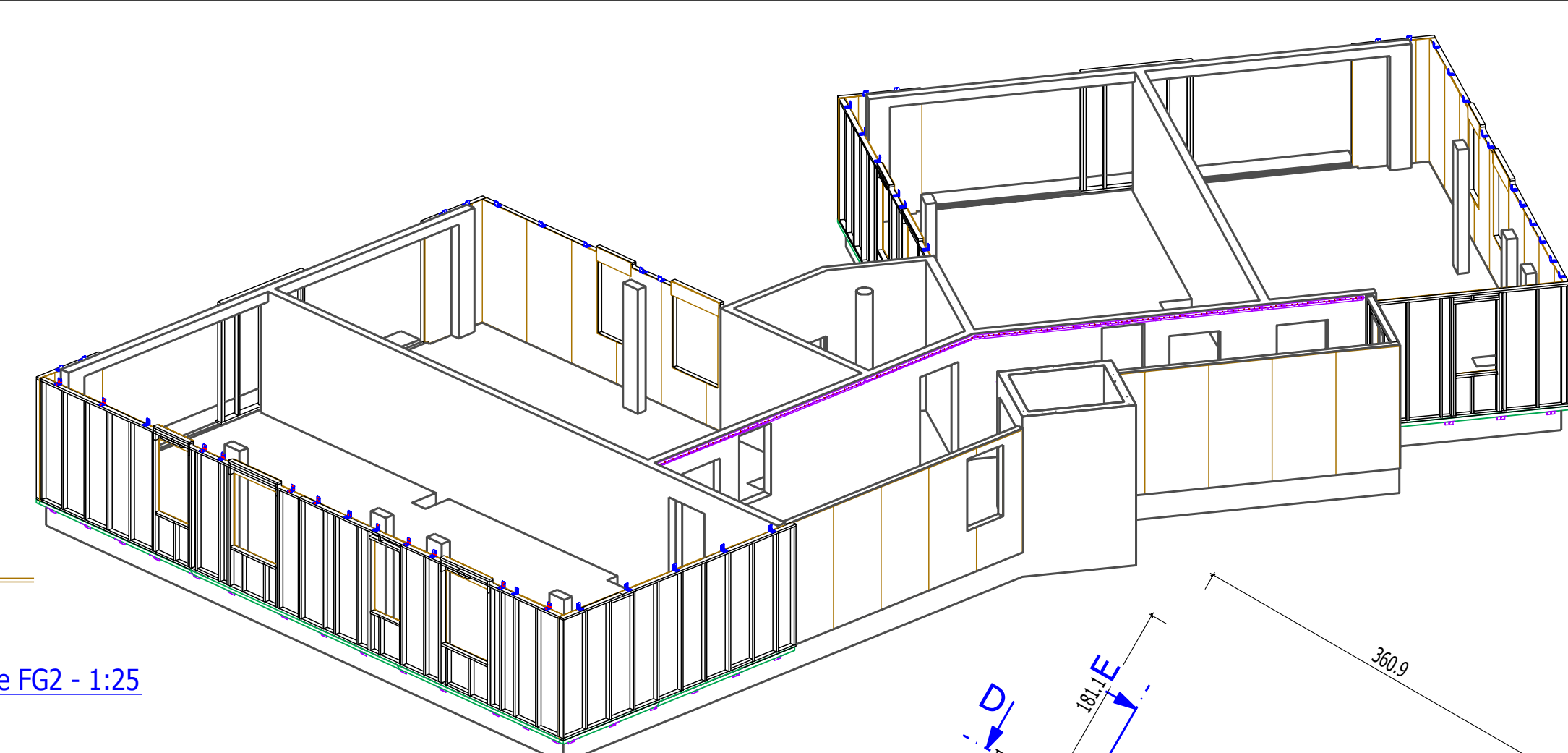
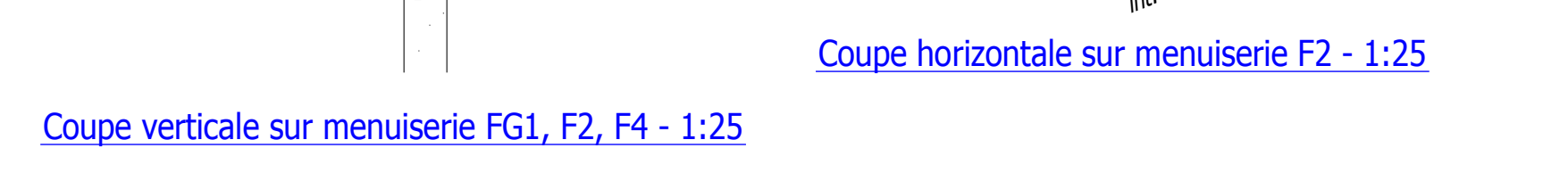


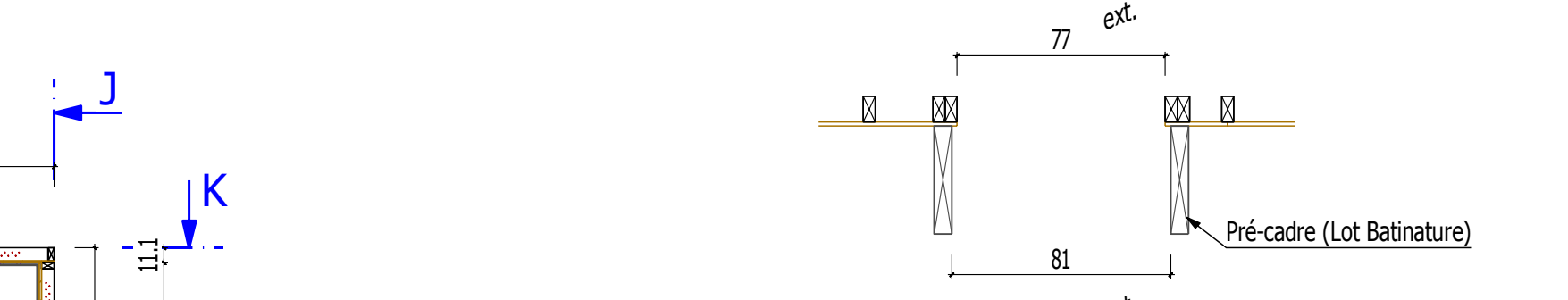
Coupe horizontale sur menuiserie FG2 - 1:25



Coupe horizontale sur menuiserie F4 - 1:25



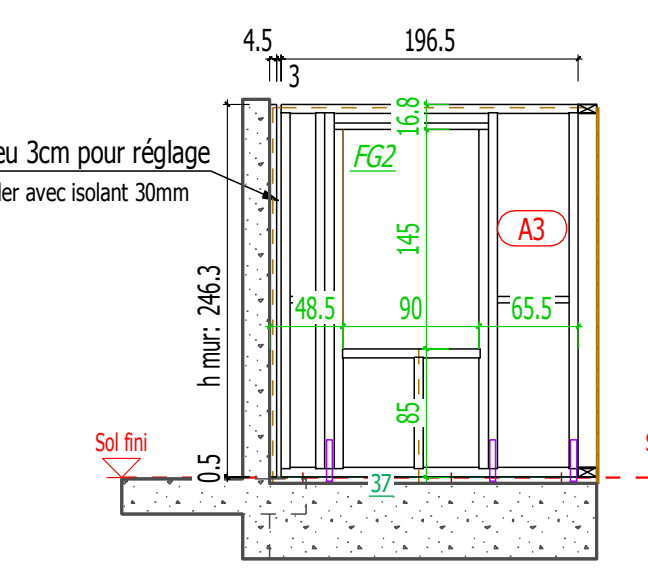
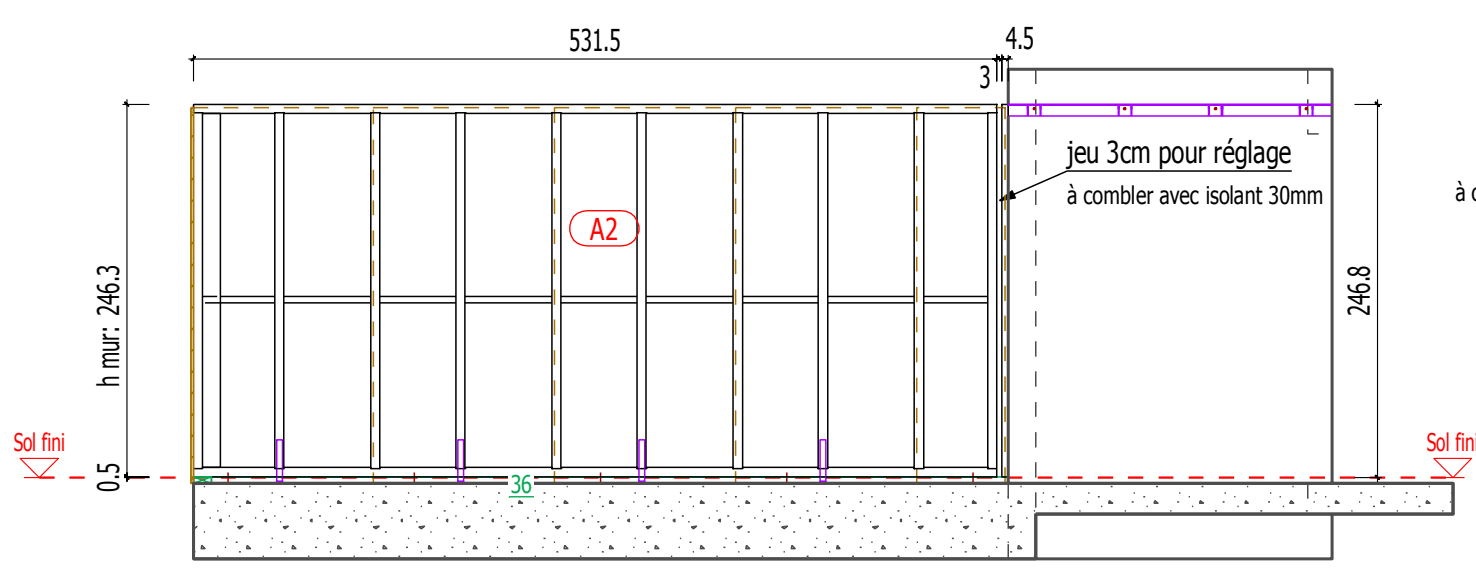
Coupe horizontale sur menuiserie F2 - 1:25



Coupe horizontale sur menuiserie FG1 - 1:25

Elevation AA - 1:50 (vue de l'intérieur)

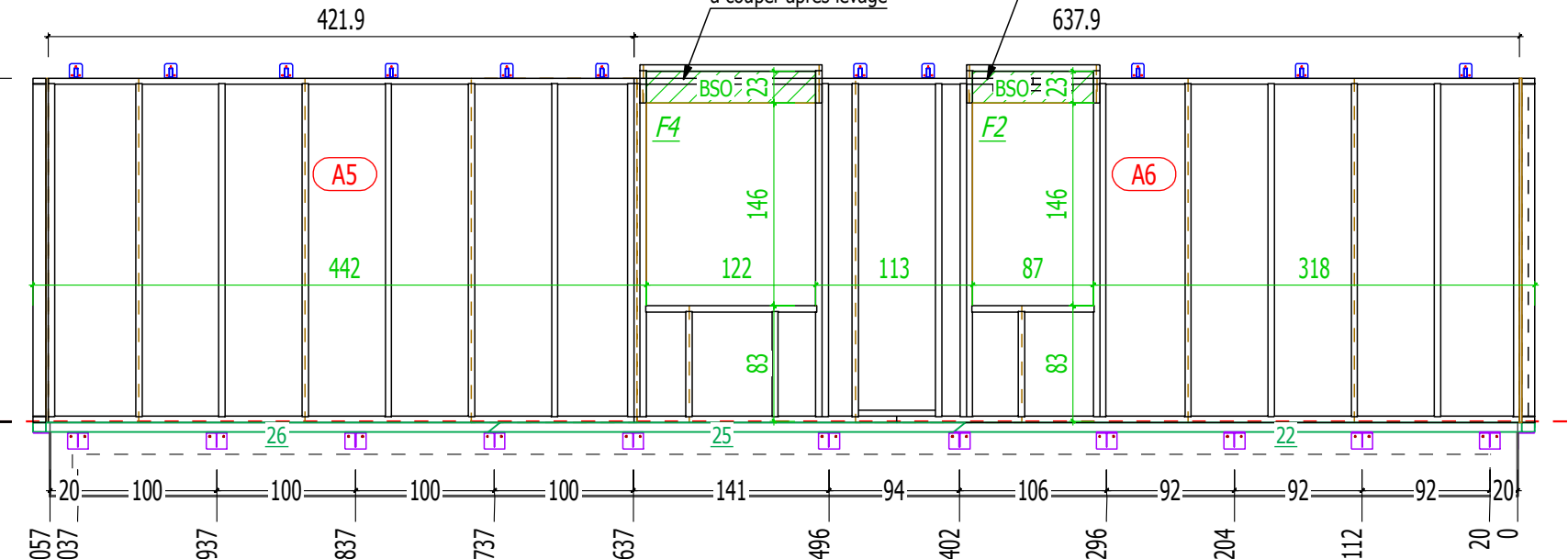
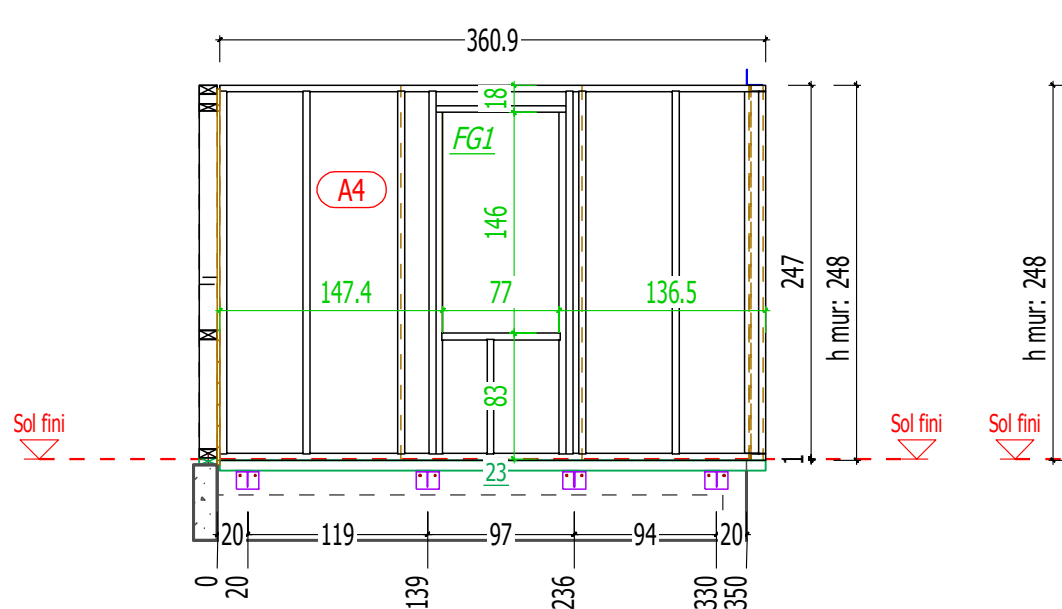
Coupe verticale sur menuiserie FG2 - 1:25



Coupe verticale sur menuiserie FG1, F2, F4 - 1:25

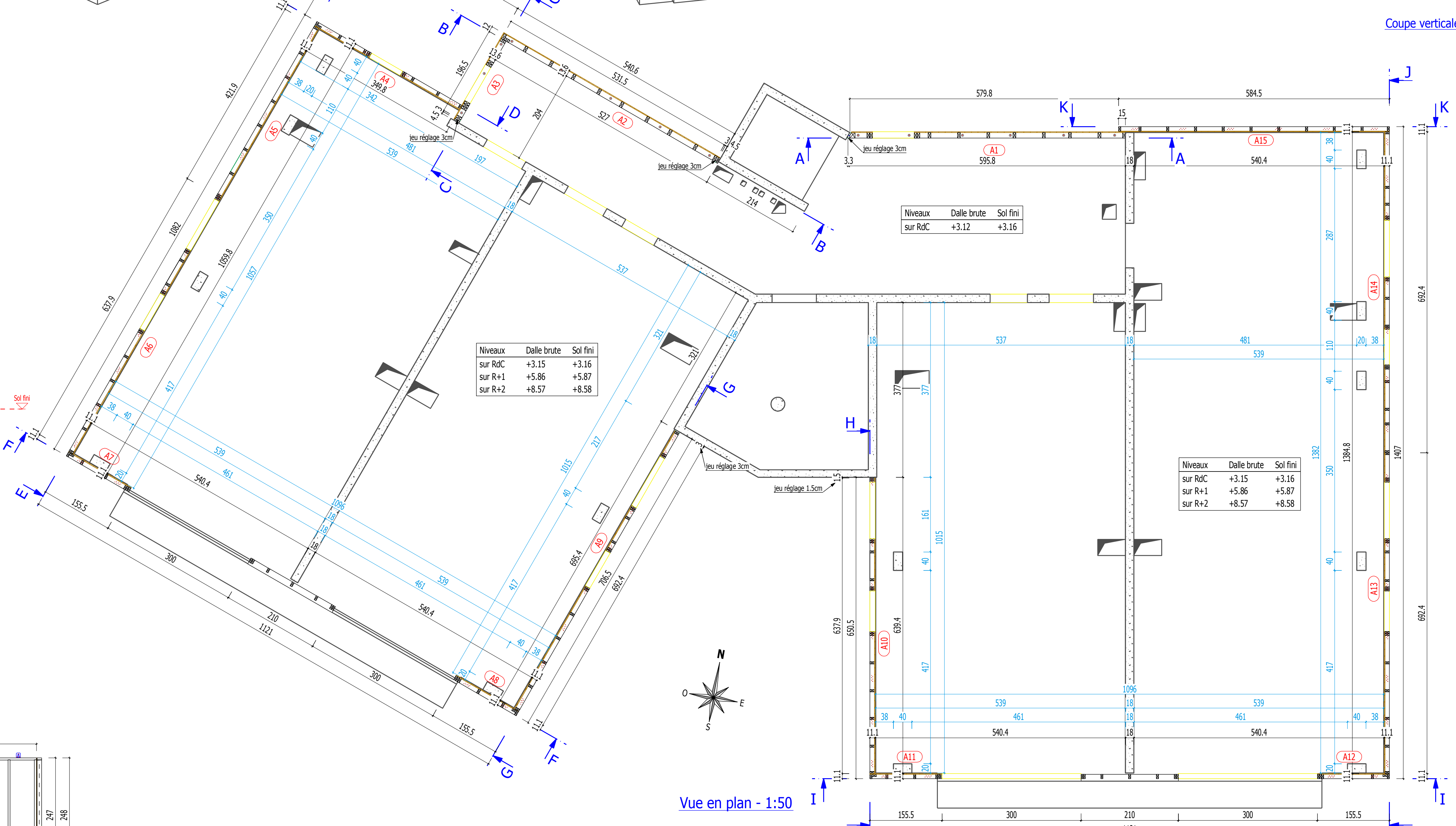
Elevation BB - 1:50 (vue de l'intérieur)

Elevation CC - 1:50 (vue de l'intérieur)



Elevation DD - 1:50

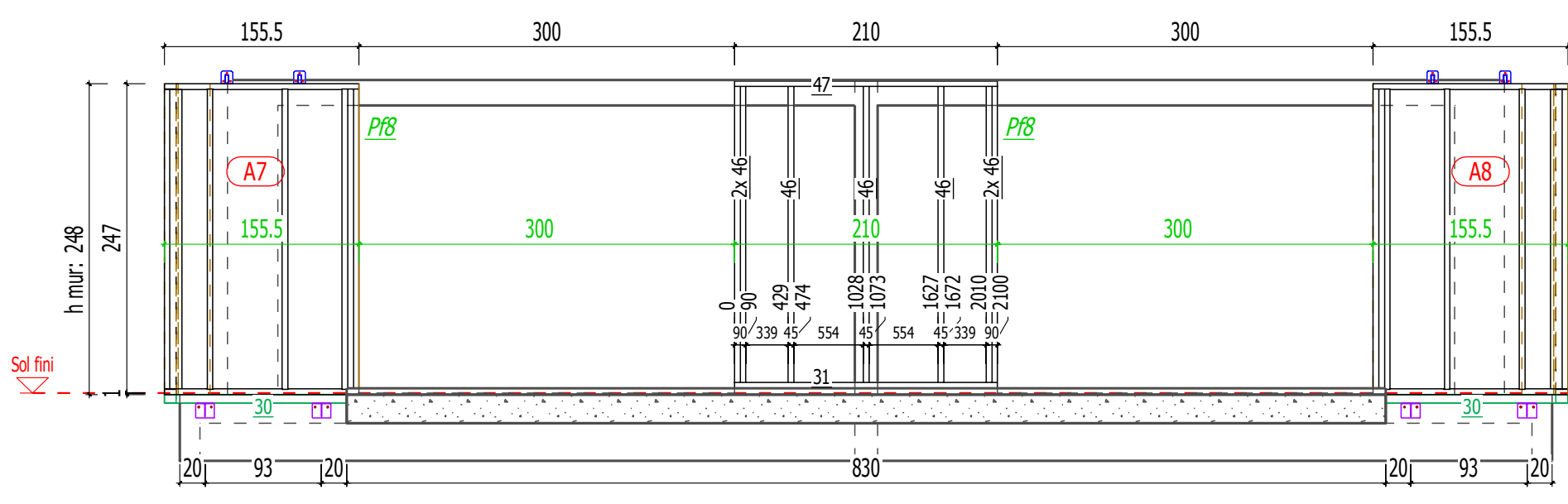
Elevation EE - 1:50



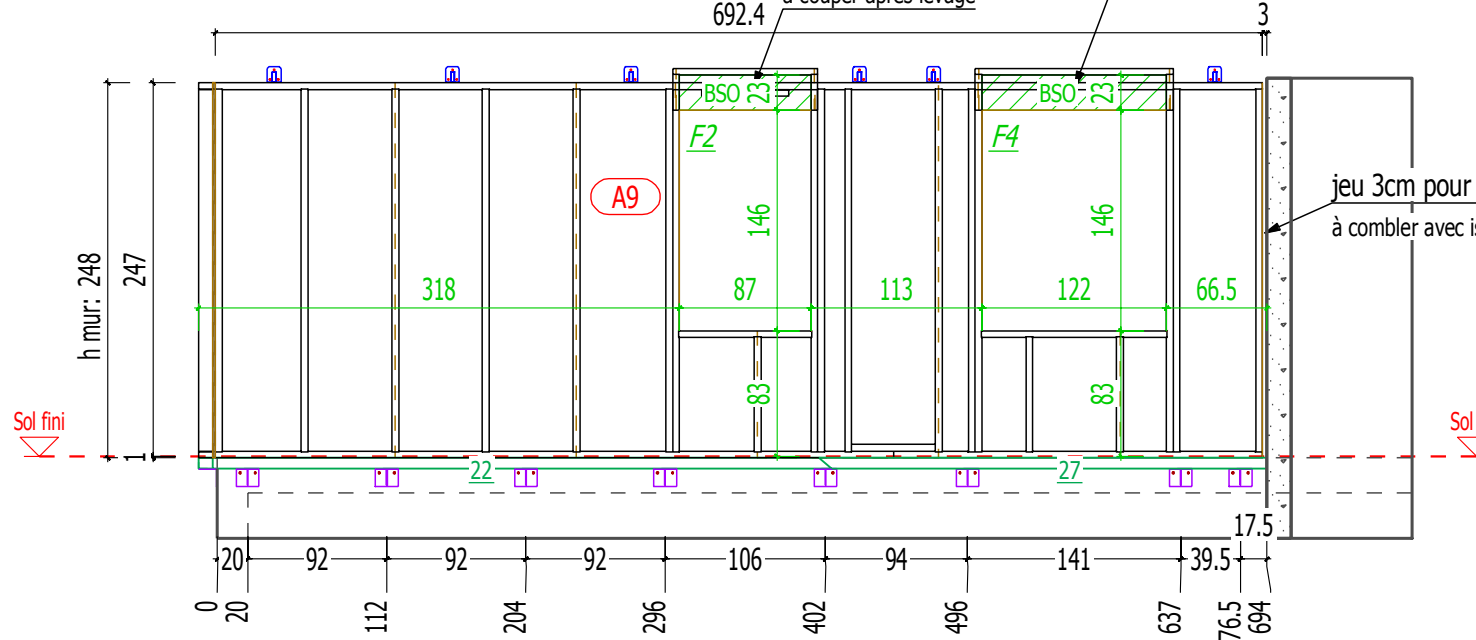
Vue en plan - 1:50

Niveaux	Dalle brute	Sol fini
sur R/C	+3.15	+3.16
sur R+1	+5.86	+5.87
sur R+2	+8.57	+8.58

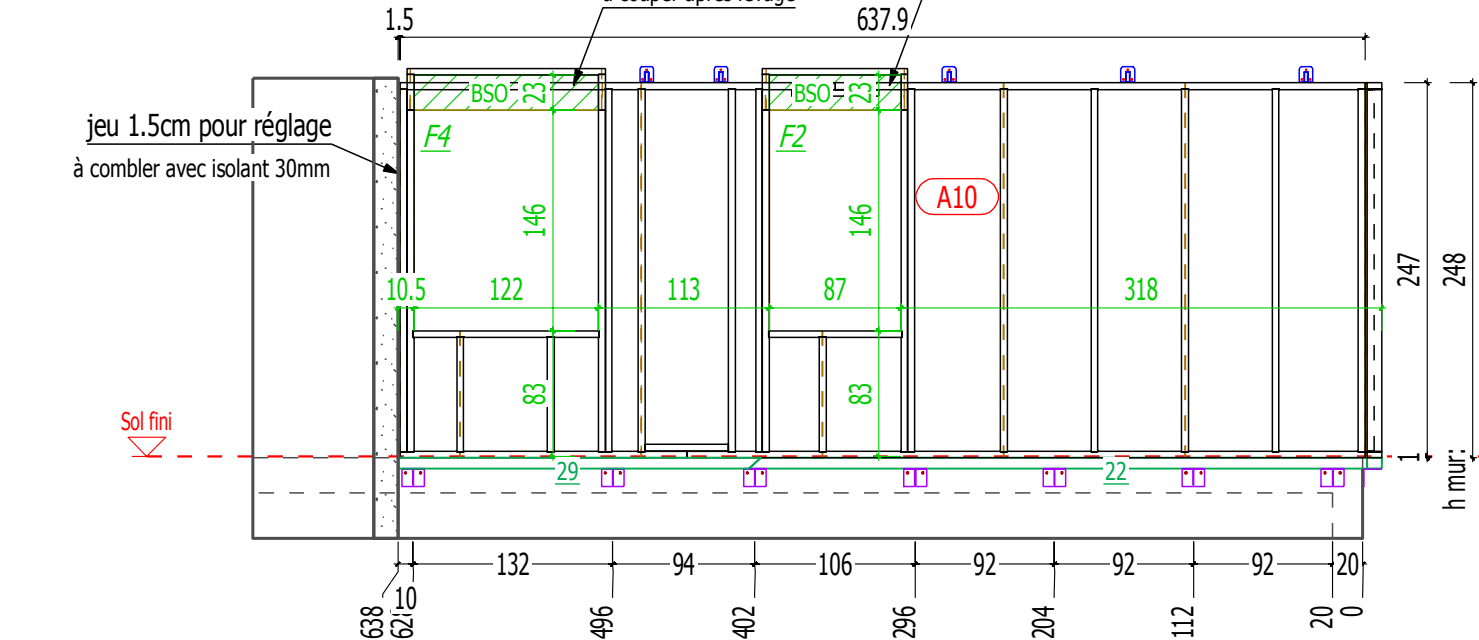
Niveaux	Dalle brute	Sol fini
sur R/C	+3.15	+3.16
sur R+1	+5.86	+5.87
sur R+2	+8.57	+8.58



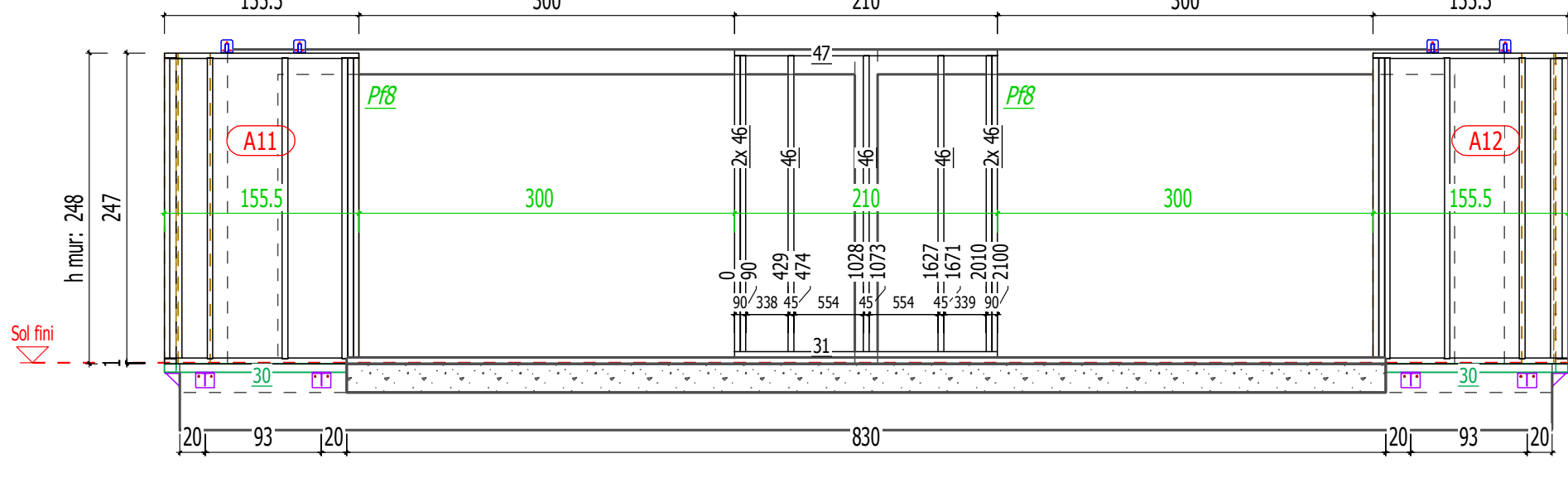
Elevation FF - 1:50



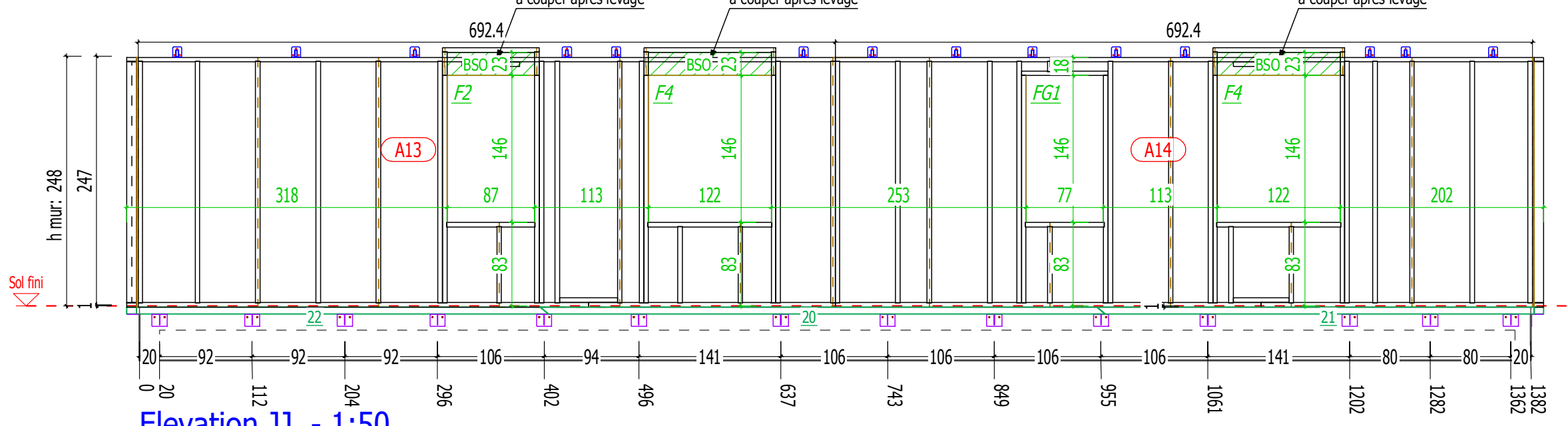
Elevation GG - 1:50



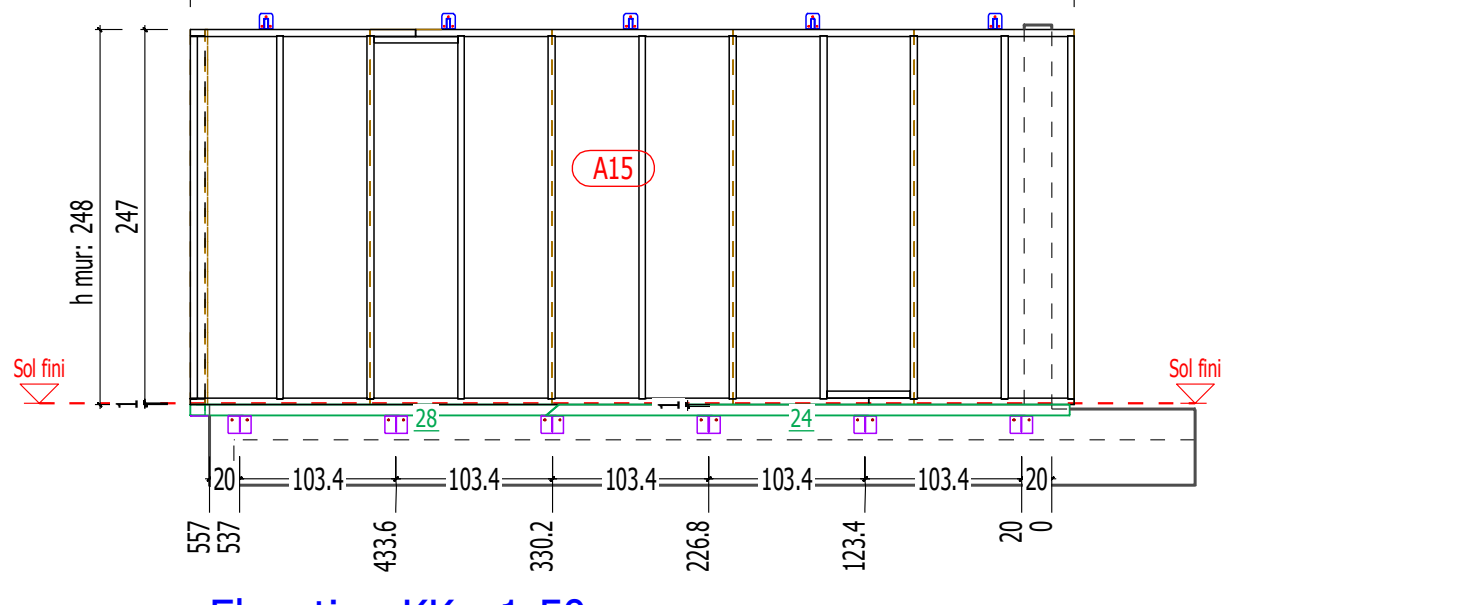
Elevation HH - 1:50



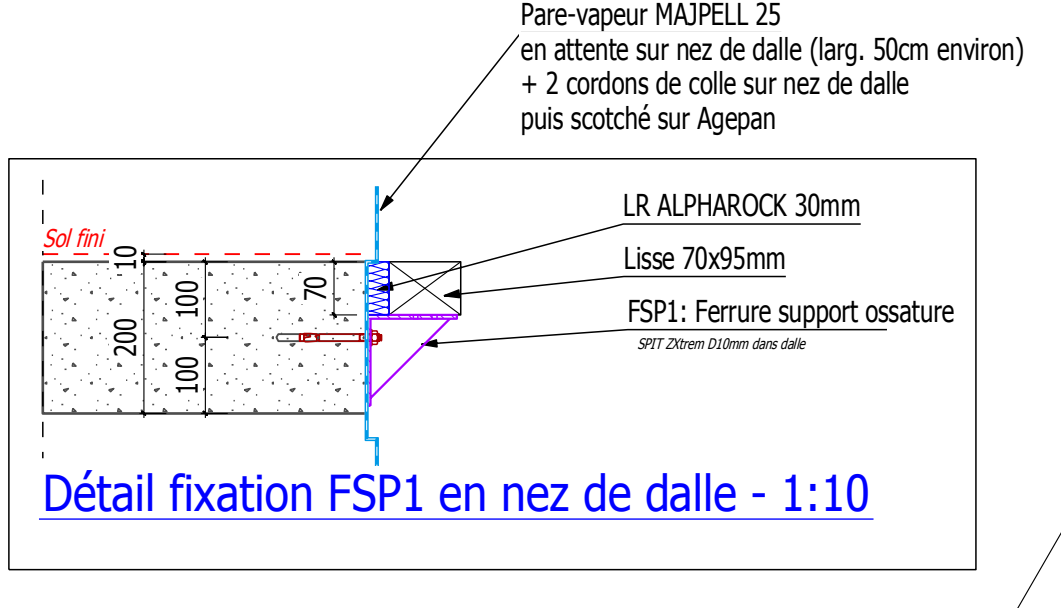
Elevation II - 1:50



Elevation JJ - 1:50



Elevation KK - 1:50

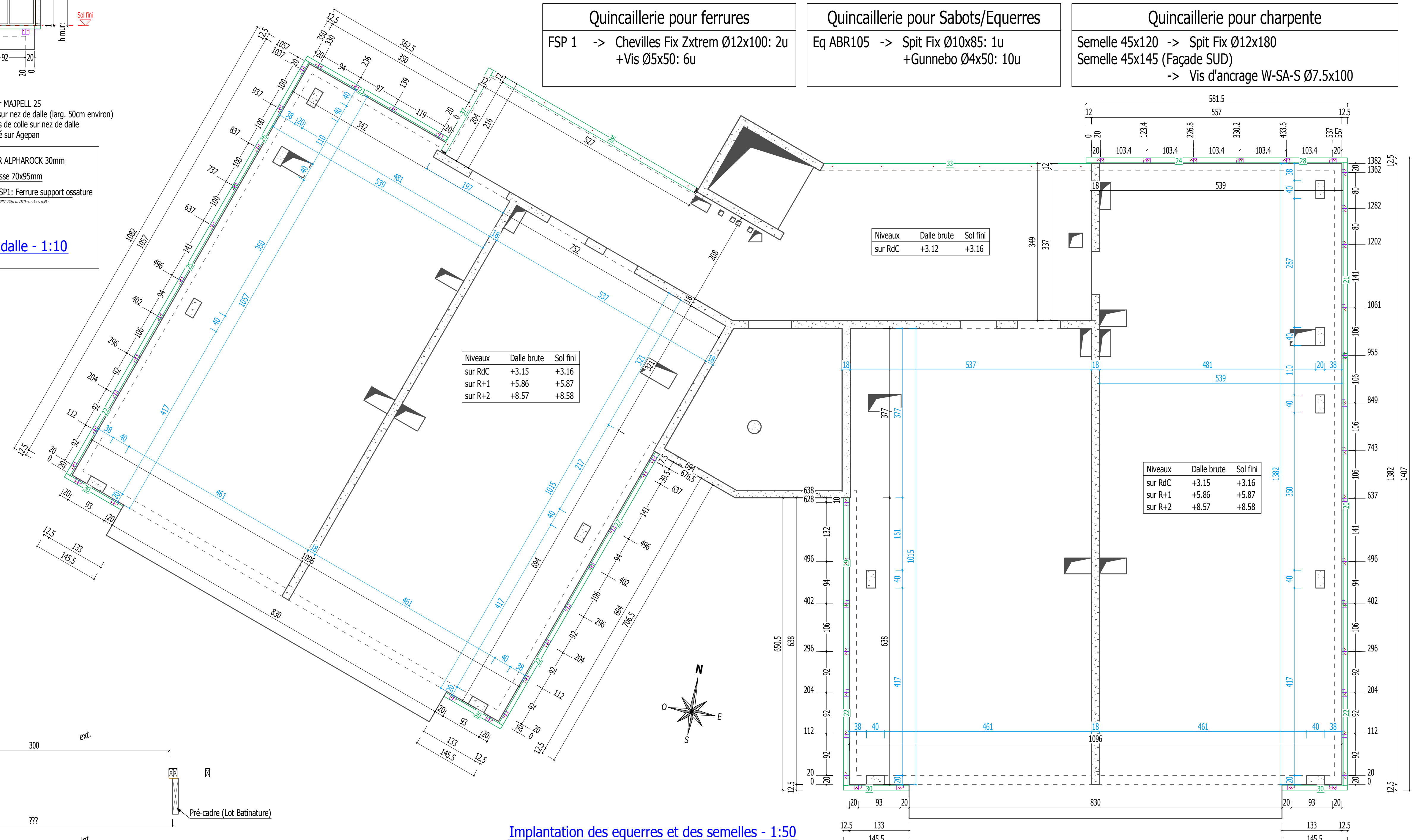


Détail fixation FSP1 en nez de dalle - 1:10

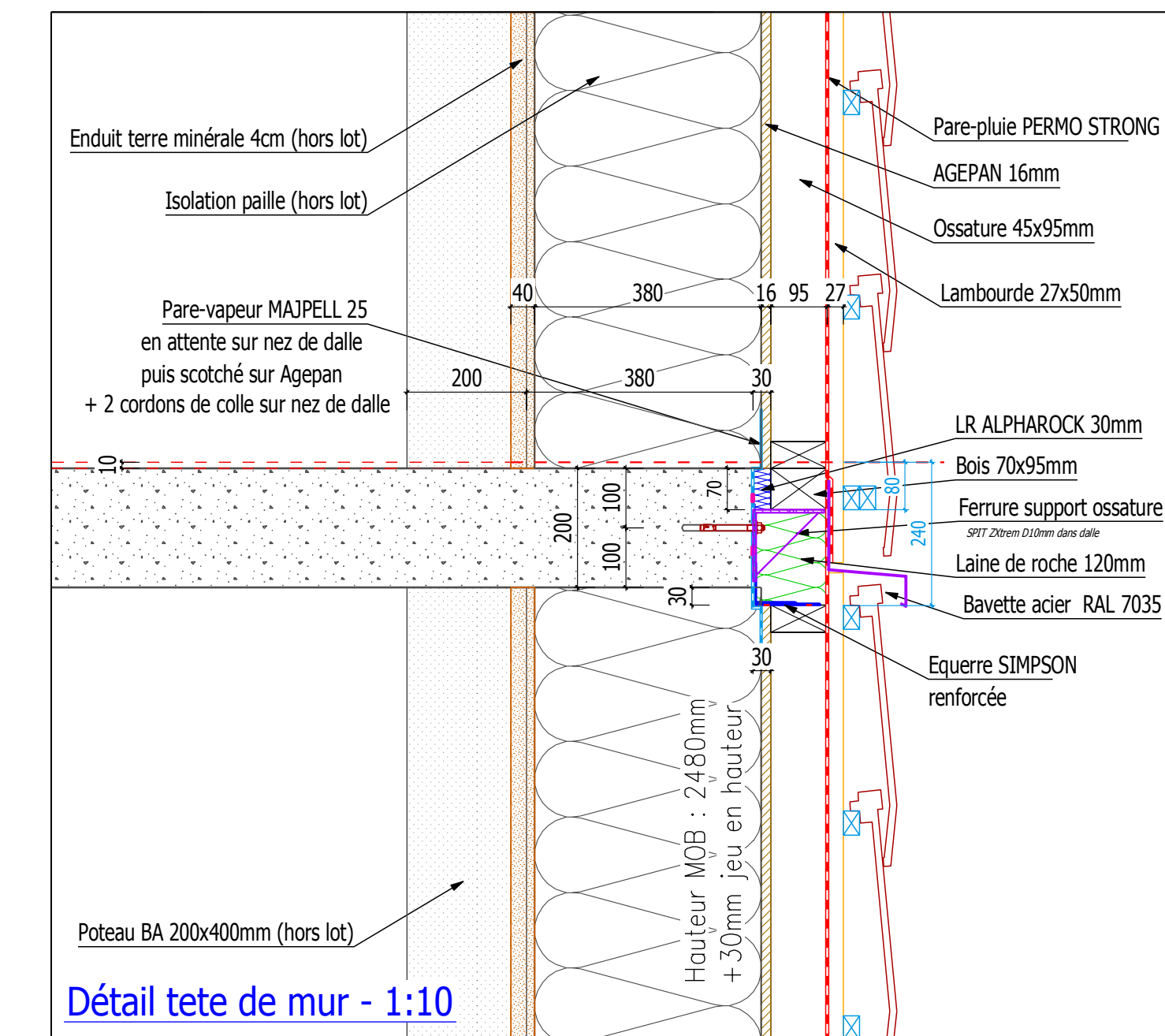
Quincaillerie pour ferrures
FSP 1 -> Chevilles Fix Zxtrem Ø12x100: 2u
+Vis Ø5x50: 6u

Quincaillerie pour Sabots/Equeres
Eq ABR105 -> Spit Fix Ø10x85: 1u
+Gannebo Ø4x50: 10u

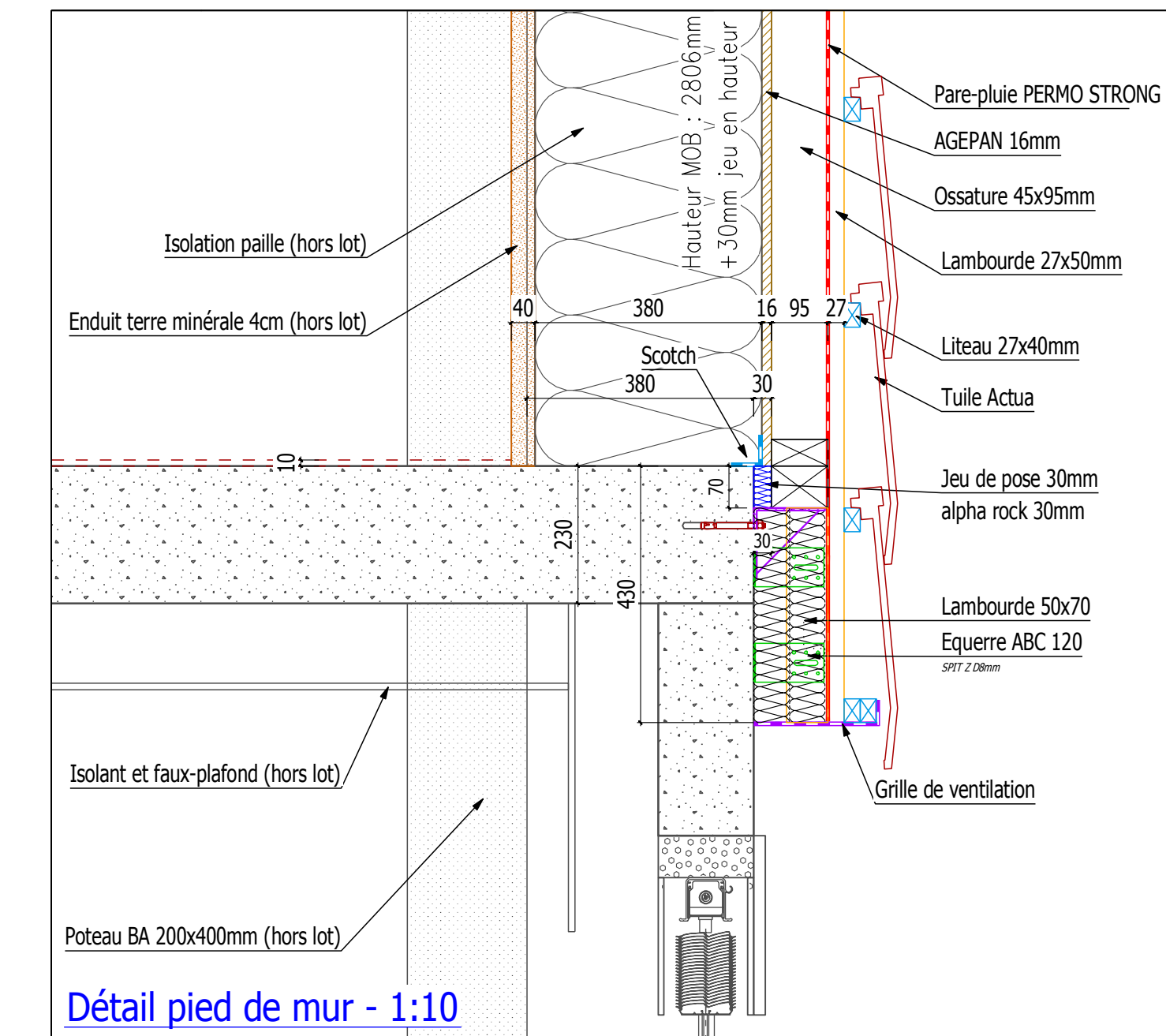
Quincaillerie pour charpente
Semelle 45x120 -> Spit Fix Ø12x180
Semelle 45x145 (Façade SUD)
-> Vis d'ancrage W-SA-S Ø7.5x100



Implantation des equeres et des semelles - 1:50



Détail tete de mur - 1:10



Détail pied de mur - 1:10



84 route du Lac • 74550 ORCIER
Tél: 04 50 73 91 23 • Fax: 04 50 70 53 77 • Mail: beo@favratt.fr

MAÎTRE D'OUVRAGE : SAS CHAMAREL "Les Barges"
ARCHITECTE : ARKETYPE STUDIO ARCHITECTES

15 455
Les BARGES
R+1/2/3
Plan de charpente

CONDITIONS D'ETUDES		
Couverture.....	-Tuiles + liteaux	Poids: -50 kg / m ²
Plafond.....	-2*BA13+isolant	Poids: -37 kg / m ²
Zone de neige.....	A2	Altitude: < 200 m
Zone de vent.....	2	Site: Normal
Zone sismique.....	2	Cat.: II

INDICE	Ech: 1:50, 1:25 Date: 27/06/2016 - 27/07/2016	Dessinateur : Modifications
A		
B		
C		
D		
E		
F		

Ce plan est la propriété exclusive de FAVRAT CONSTRUCTION BOIS S.A.S., il ne peut être reproduit ou cédé à un tiers.