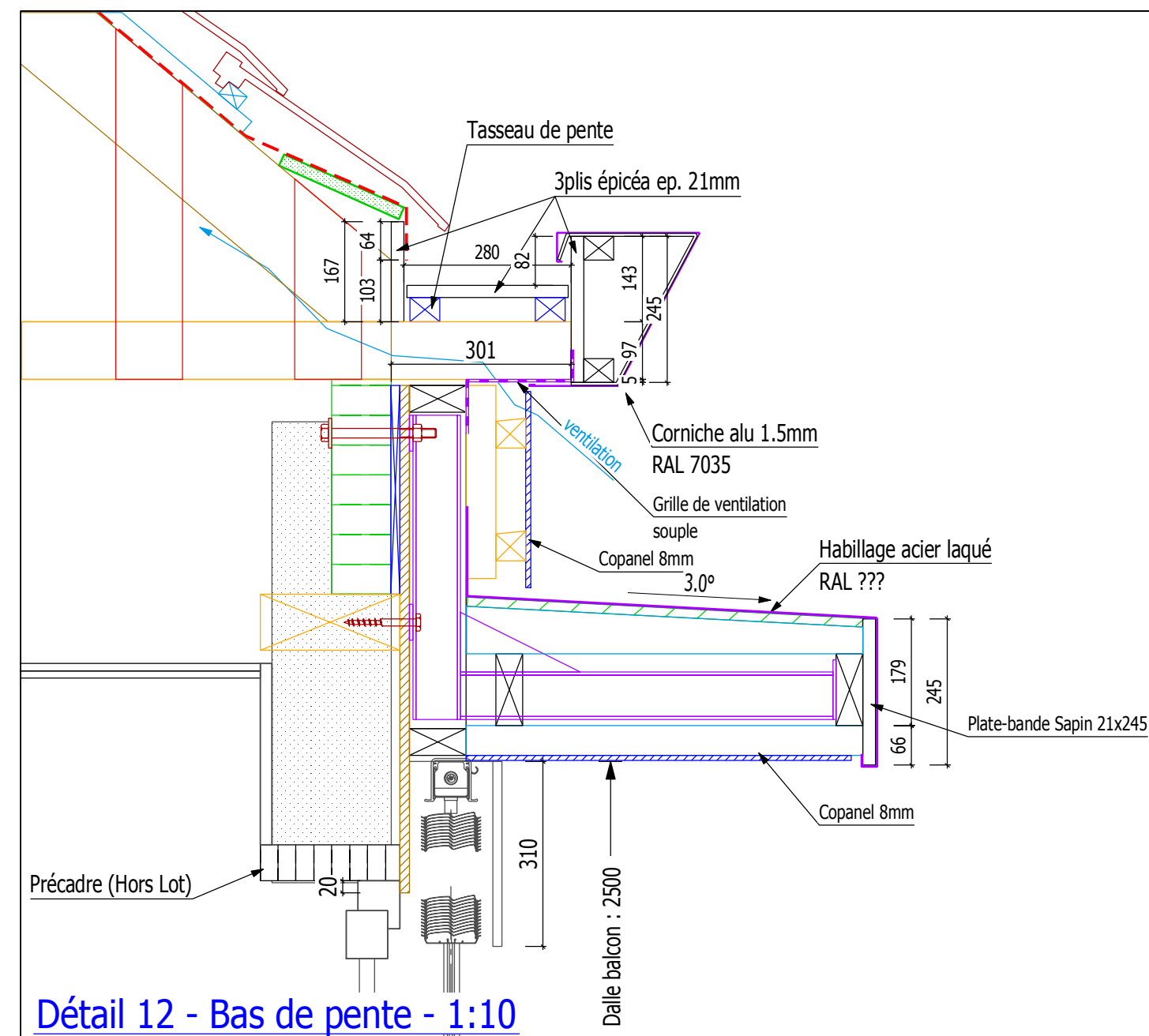
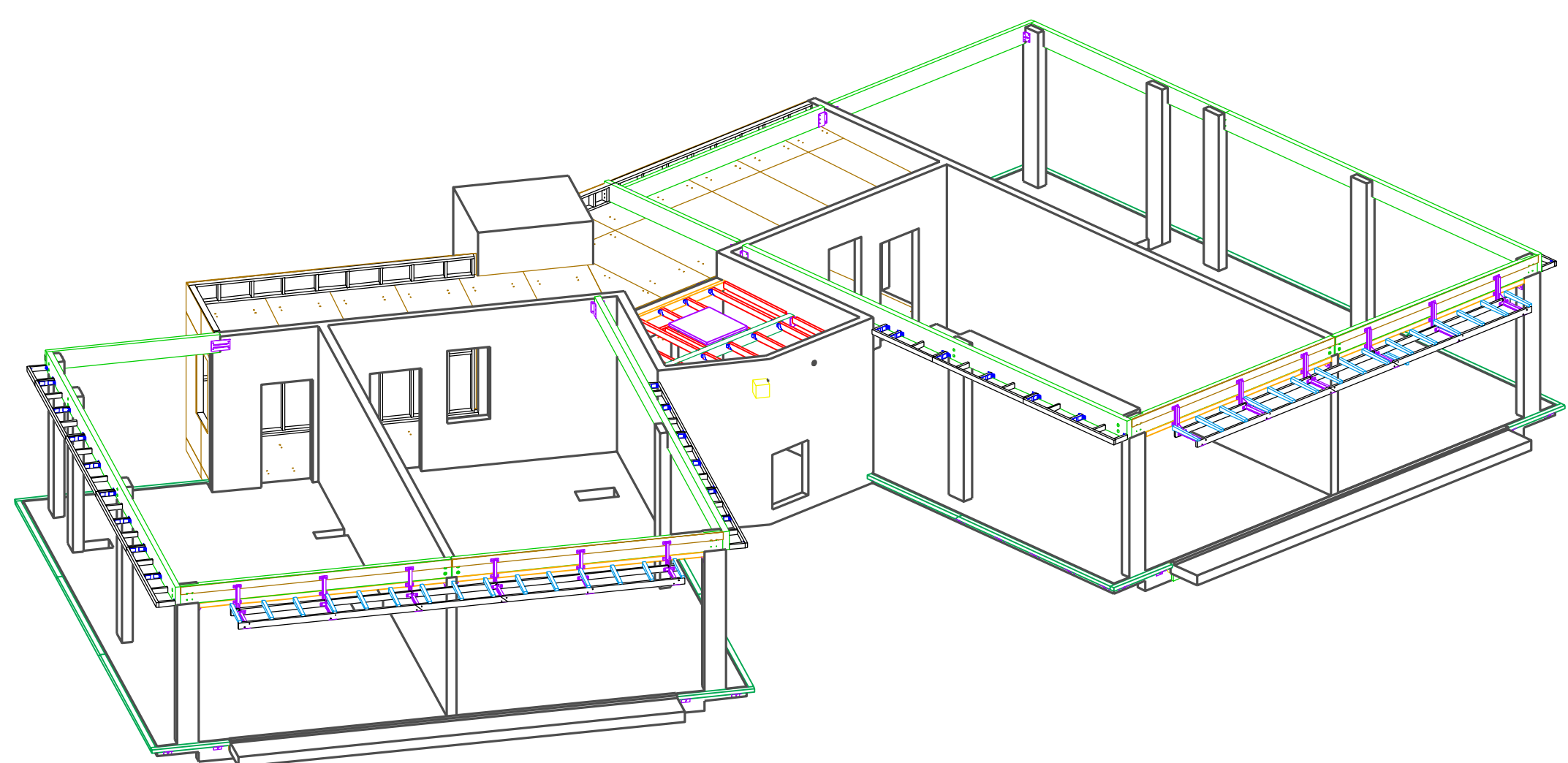
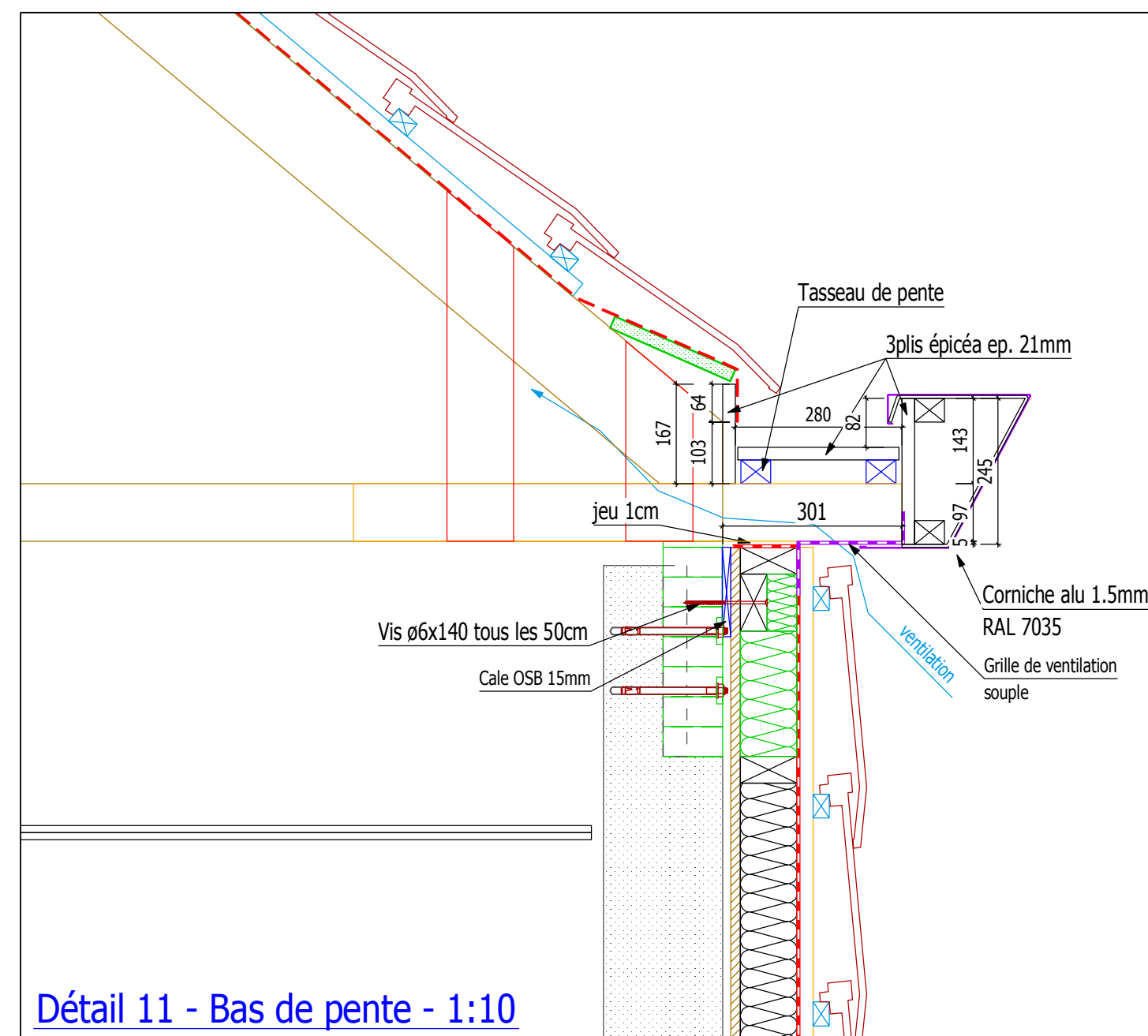


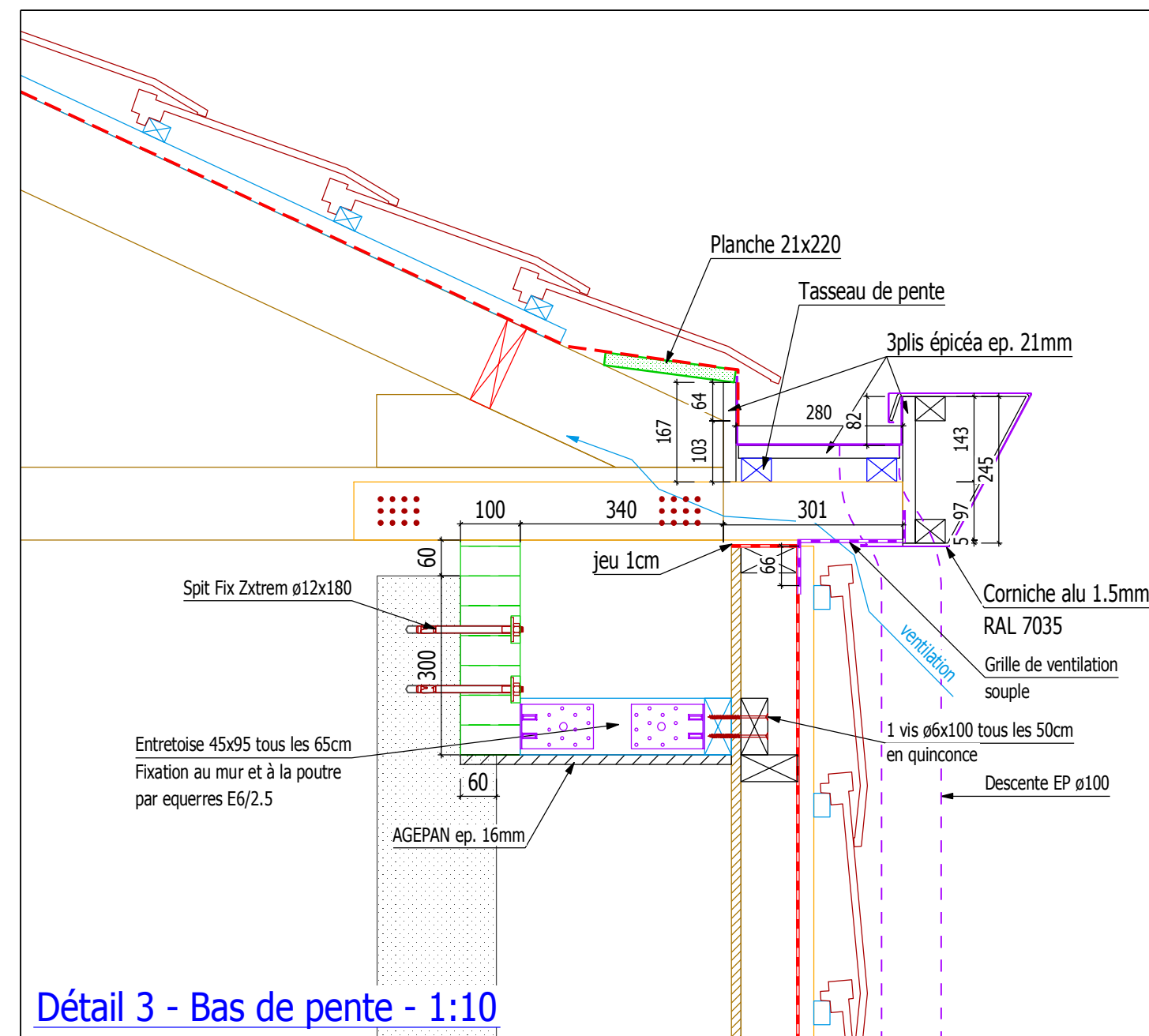
Axonométries



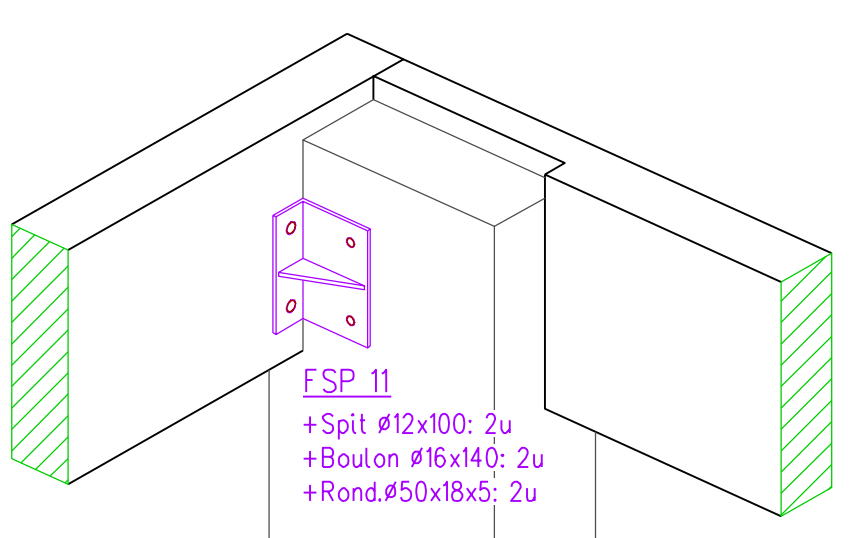
Détail 12 - Bas de pente - 1:10



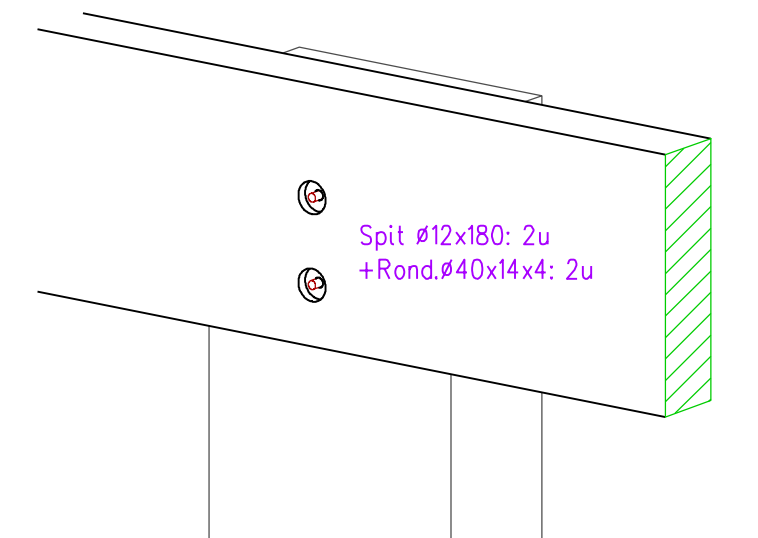
Détail 11 - Bas de pente - 1:10



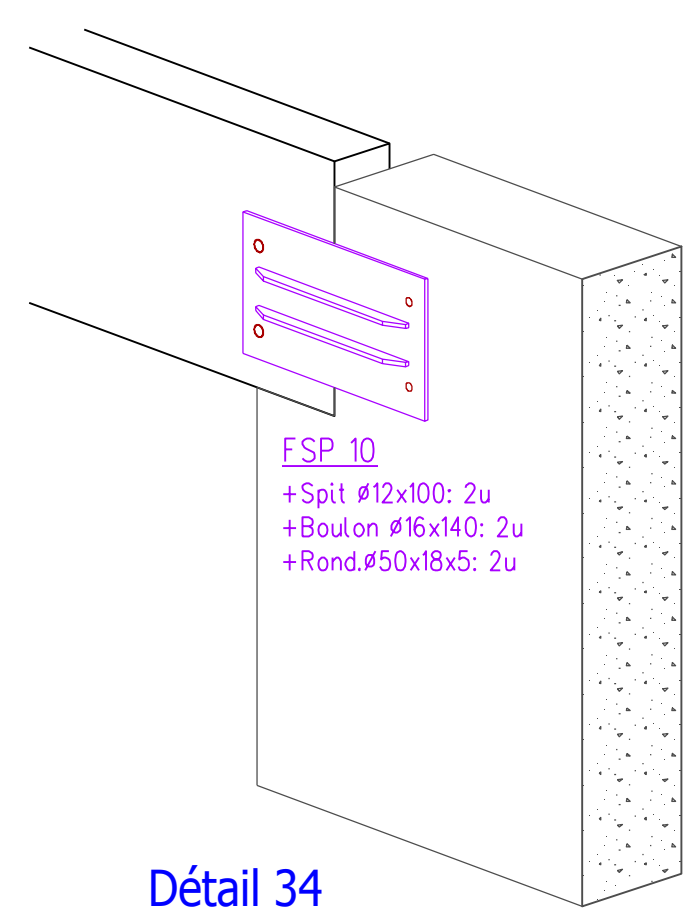
Détail 3 - Bas de pente - 1:10



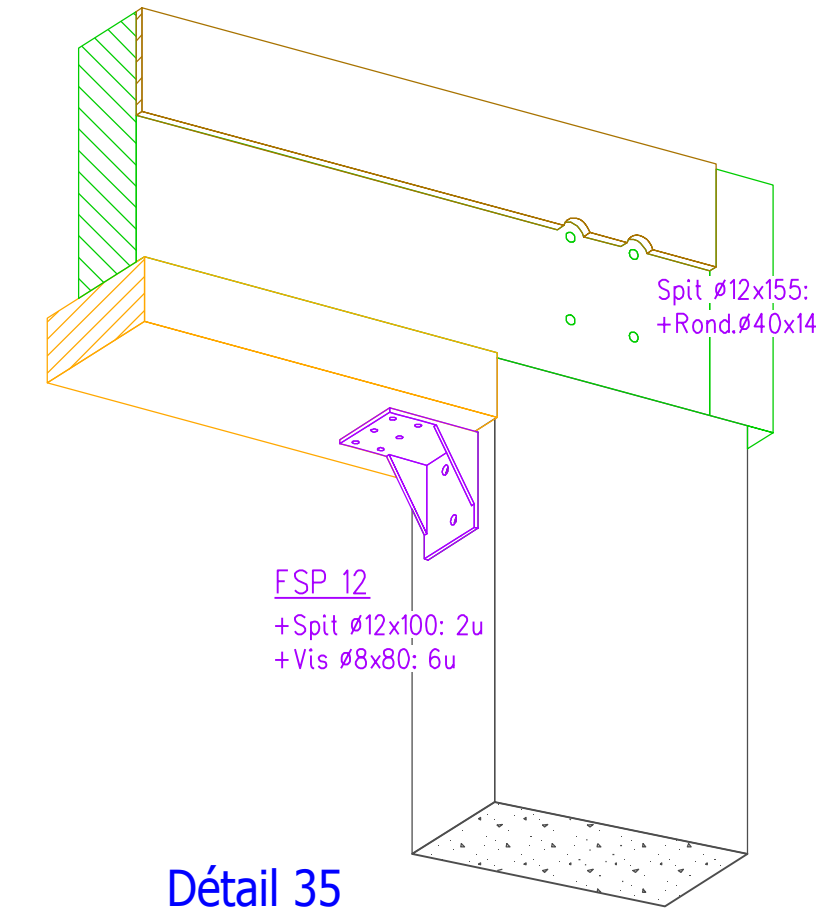
Détail 32



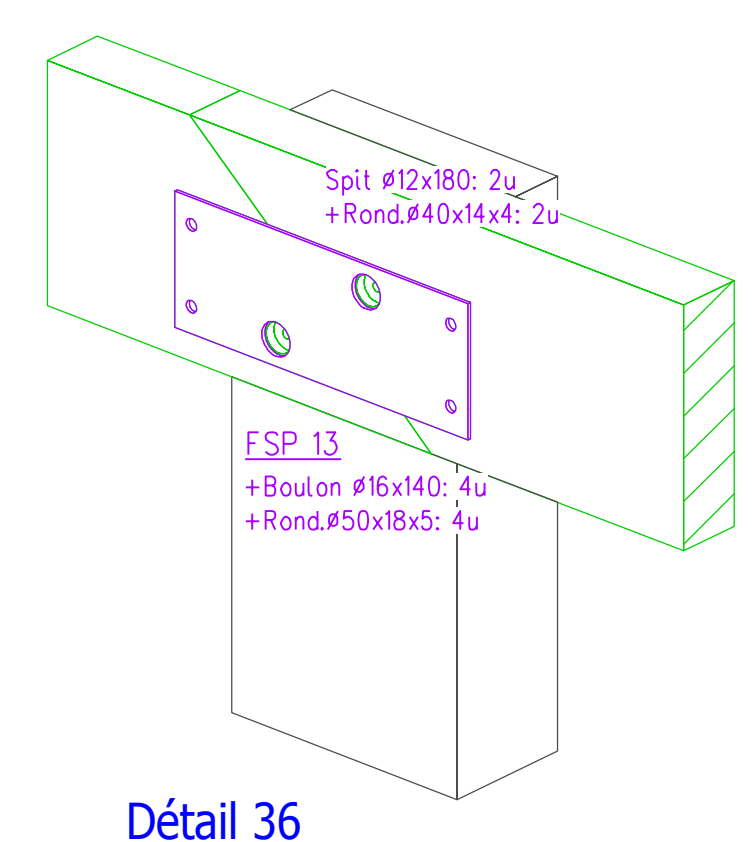
Détail 33



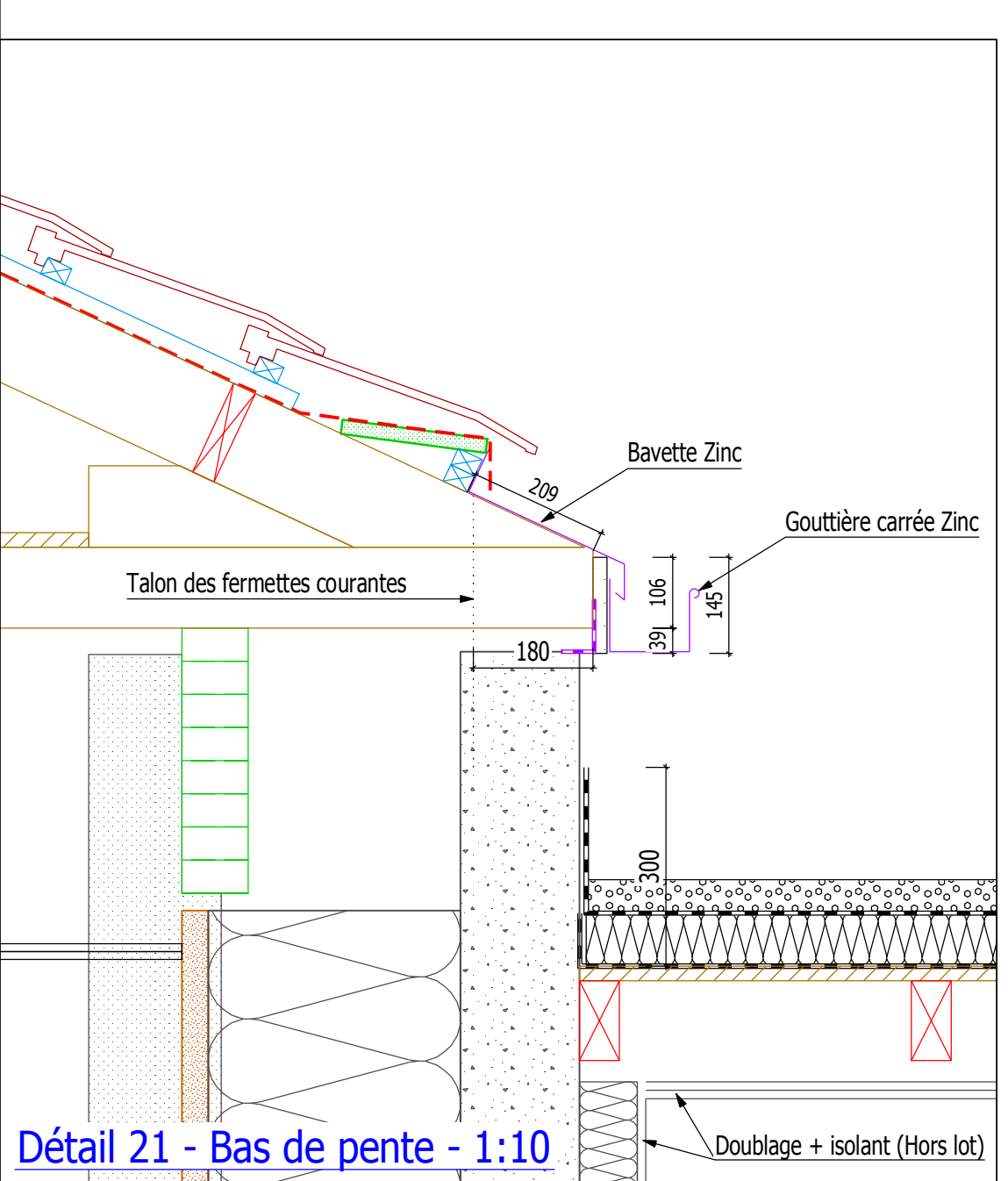
Détail 34



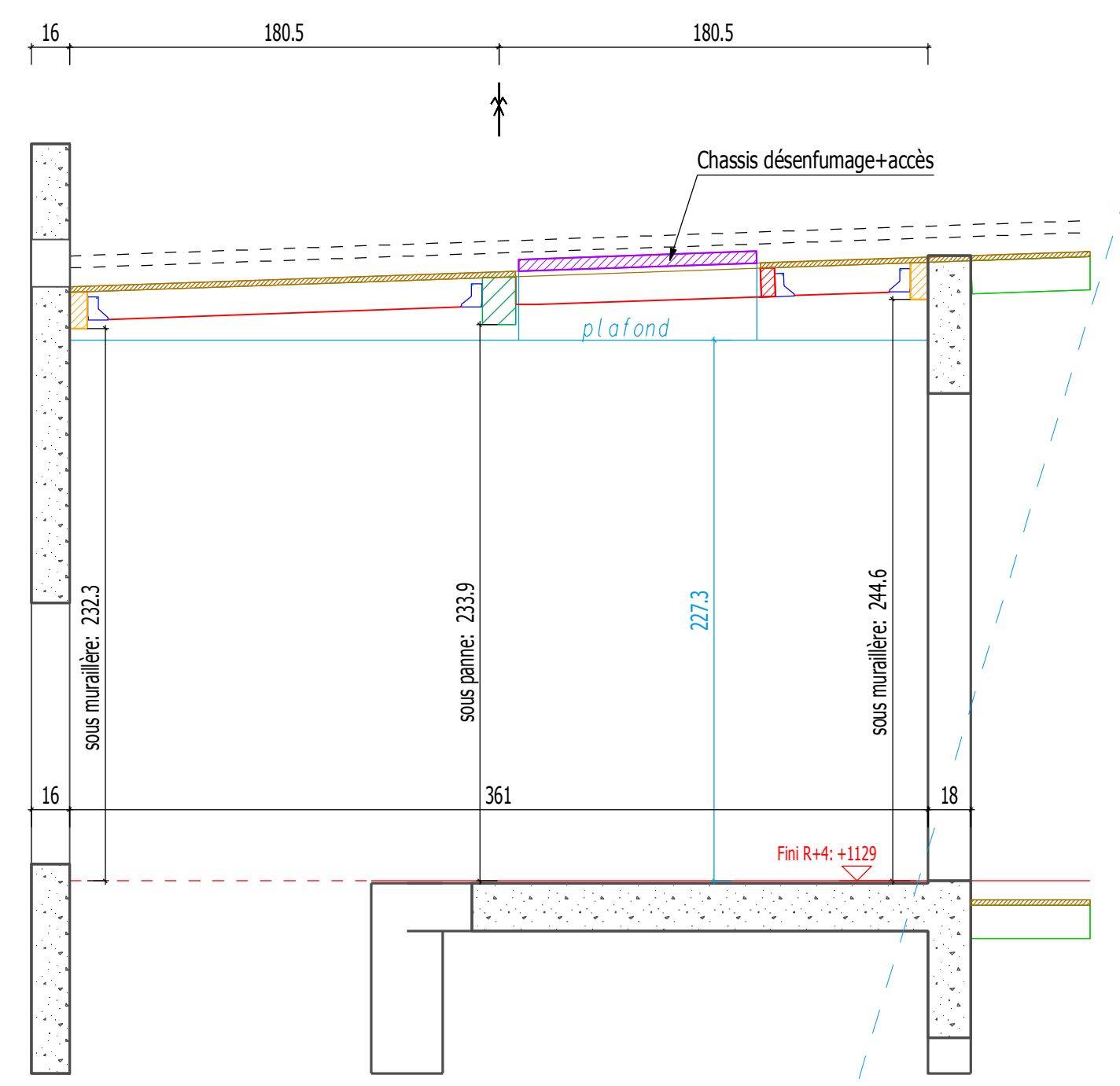
Détail 35



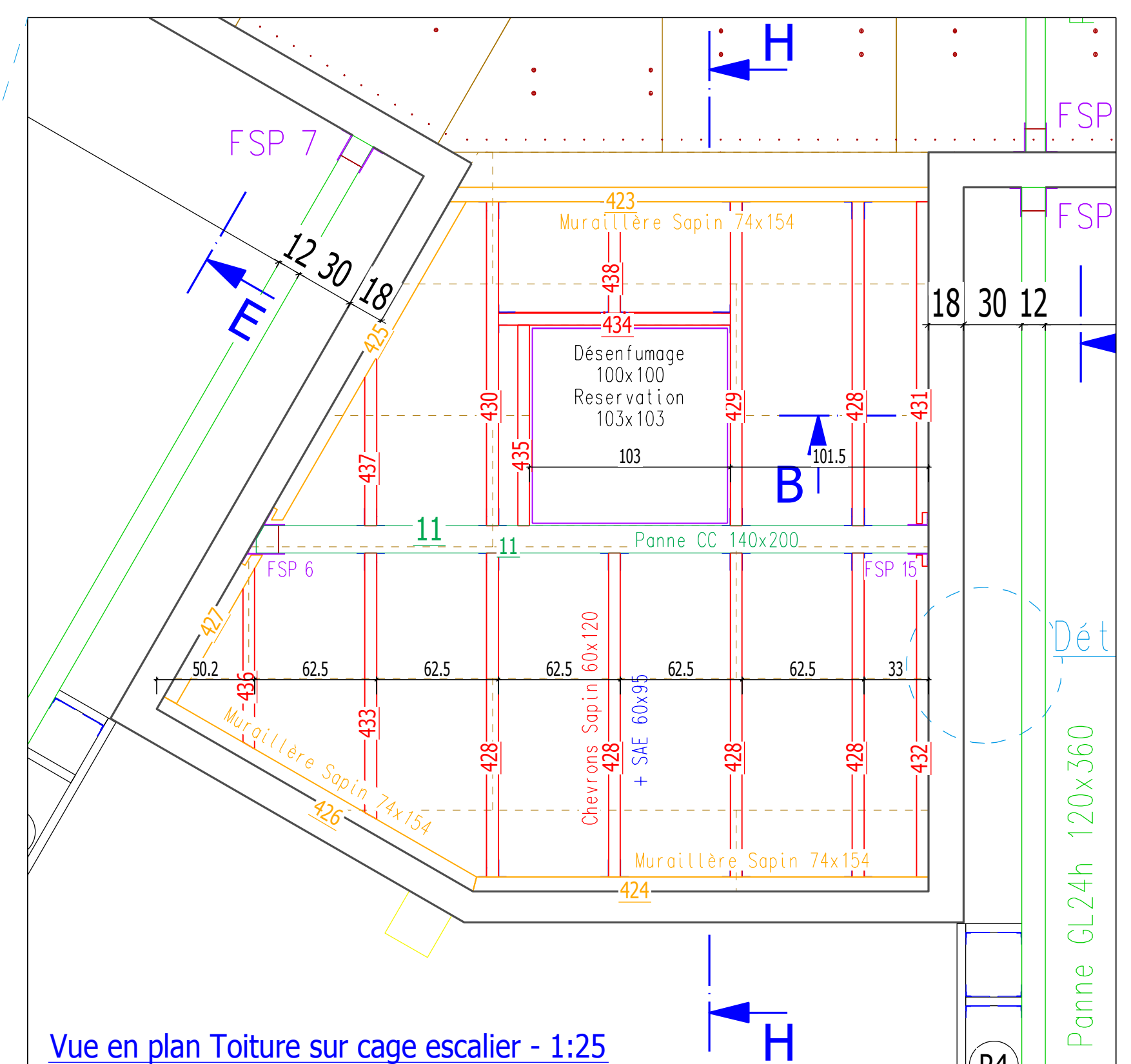
Détail 36



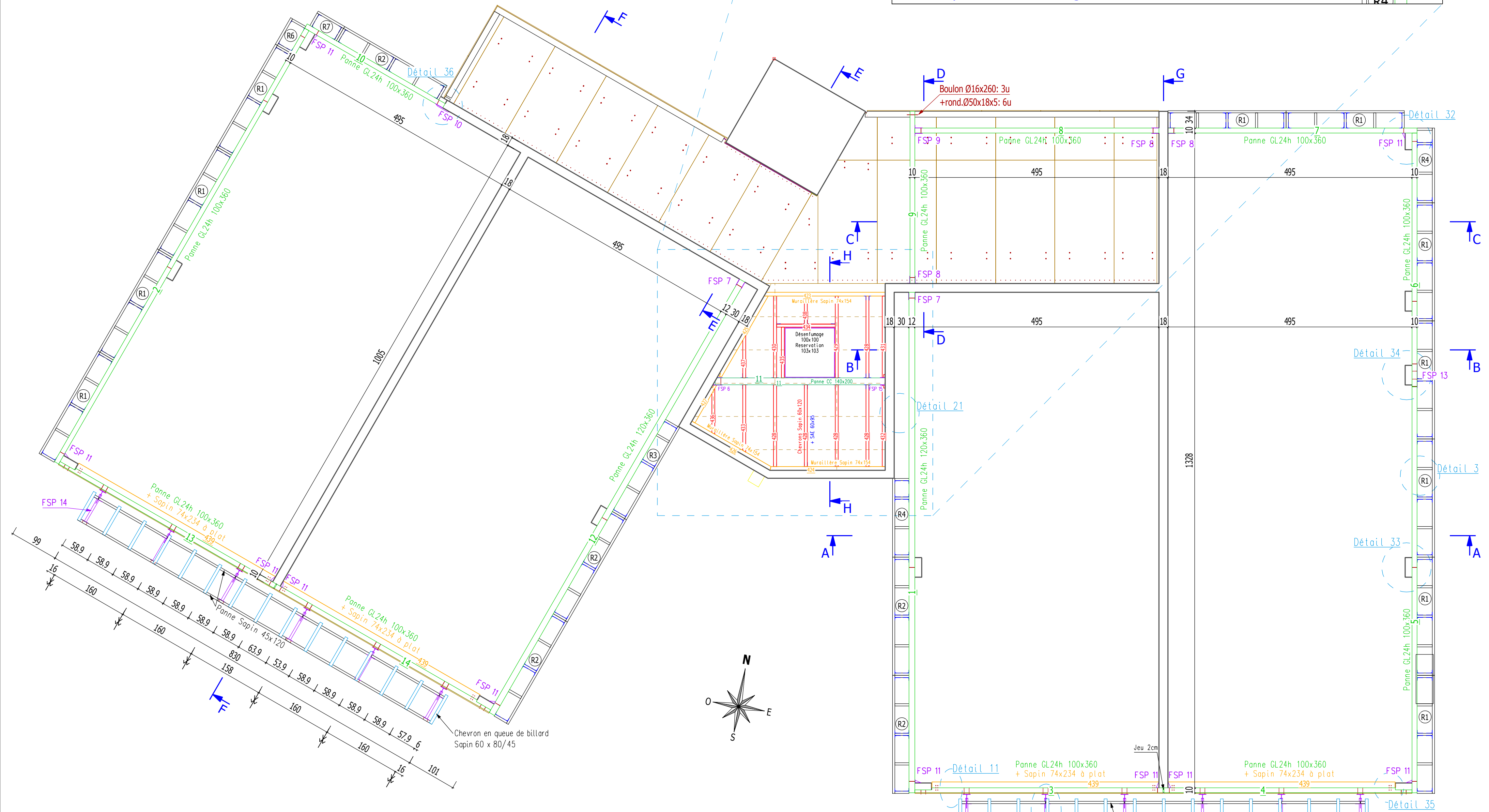
Détail 21 - Bas de pente - 1:10



Coupe HH sur R+4 cage escalier - 1:25



Vue en plan Toiture sur cage escalier - 1:25



Vue en plan - 1:50



84 route du Lac • 74550 ORCIER  
Tél: 04 50 73 91 23 • Fax: 04 50 70 53 77 • Mail: be@favrat.fr

MAITRE D'OUVRAGE : SAS CHAMAREL "Les Barges"  
ARCHITECTE : ARKETYPE STUDIO ARCHITECTES

# 15 455

## Les BARGES

### Charpente

#### Plan de charpente

CONDITIONS D'ETUDES		
Couverture.....	-Tuiles + liteaux	Poids: -50 kg / m <sup>2</sup>
Plafond.....	-2*BA13+isolant	Poids: -37 kg / m <sup>2</sup>
Zone de neige.....	A2	Altitude: < 200 m
Zone de vent.....	2	Site: Normal
Zone sismique.....	2	Cat.: II

INDICE	⑥	Ech: 1:50, 1:25	Dessinateur: Sébastien MORIN
	A	Date: 11/07/2016	MODIFICATIONS
	B	Date: 27/07/2016	- Plan pour pose (n°, ...)
	C		
	D		
	E		