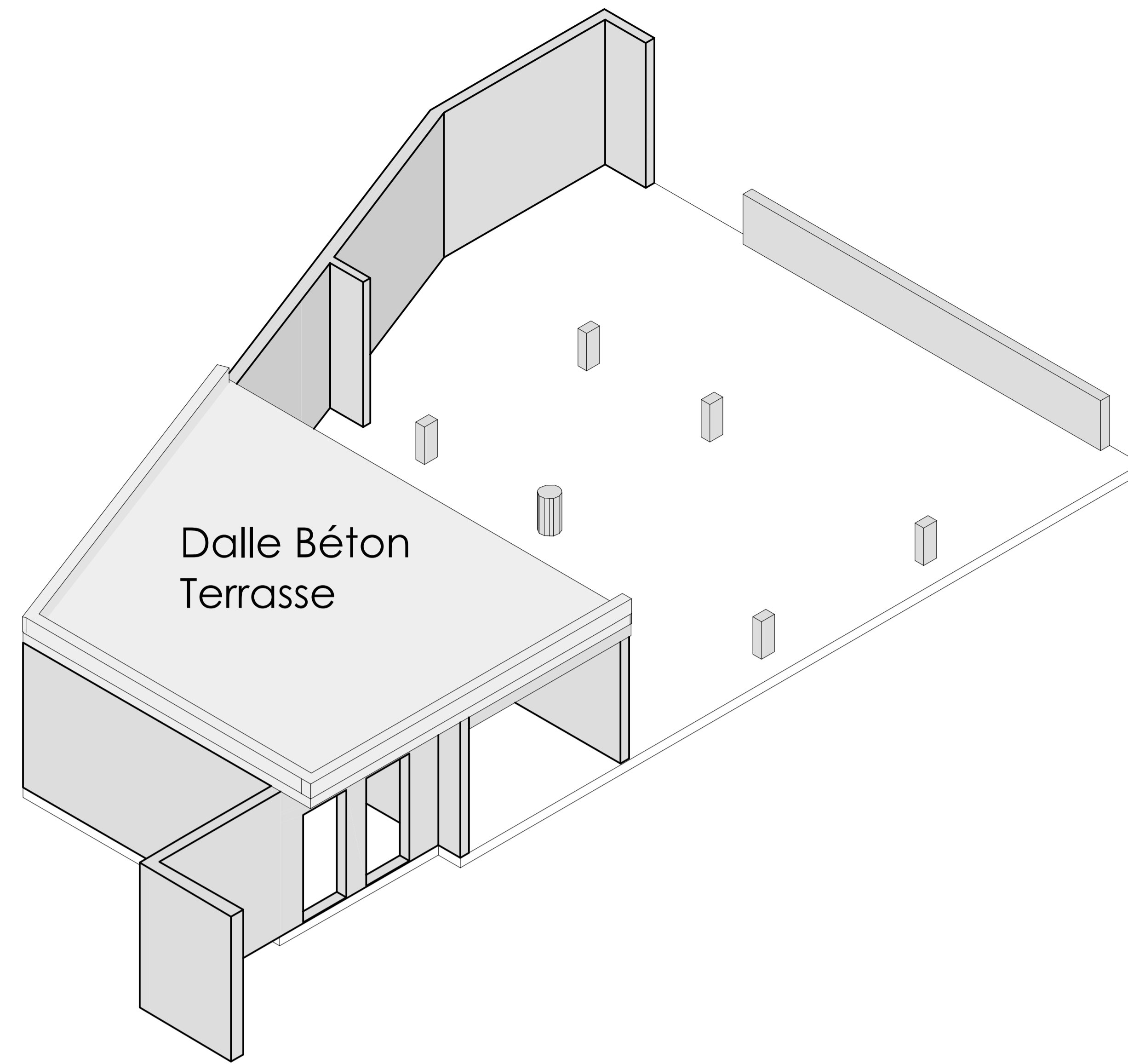
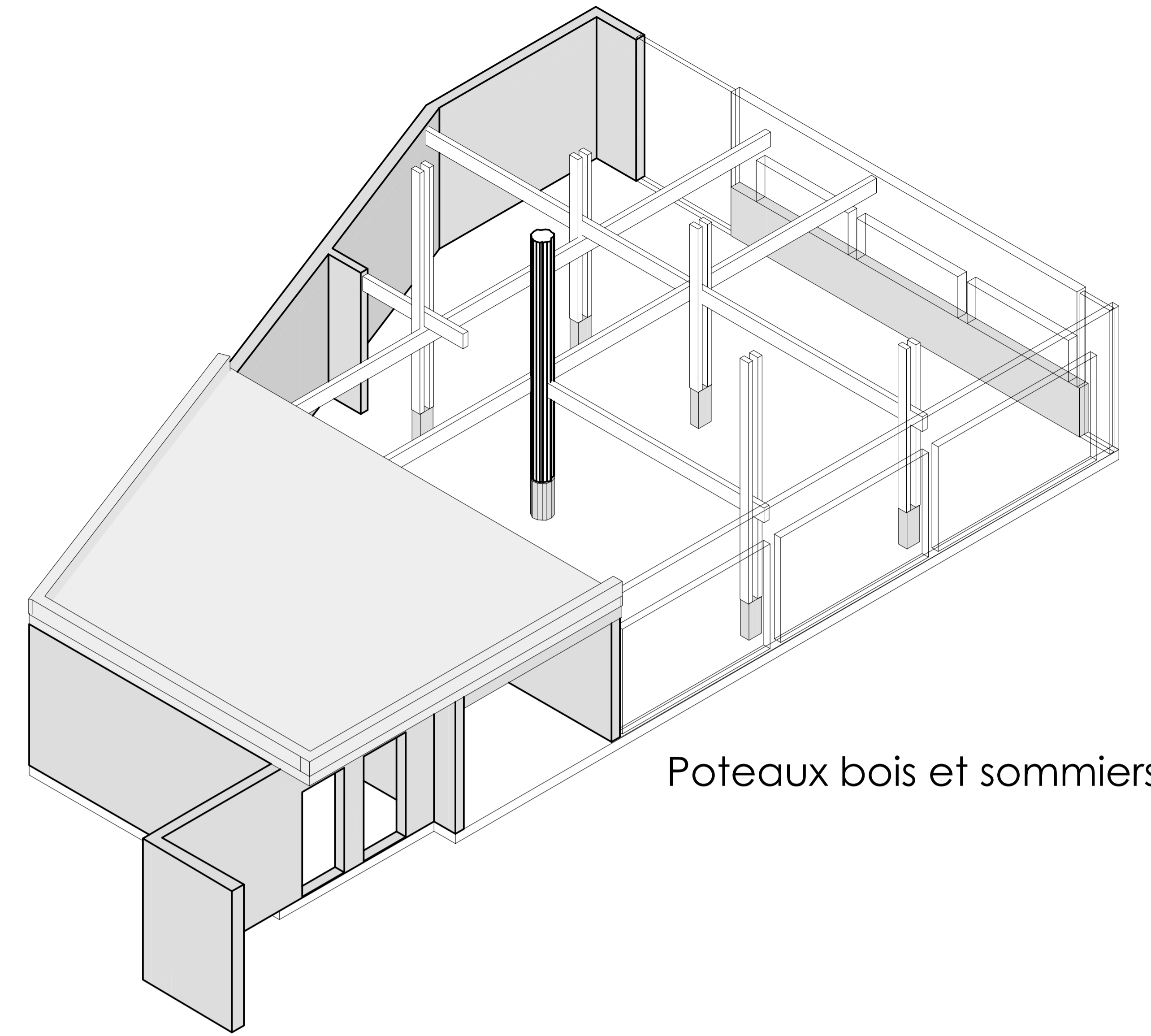


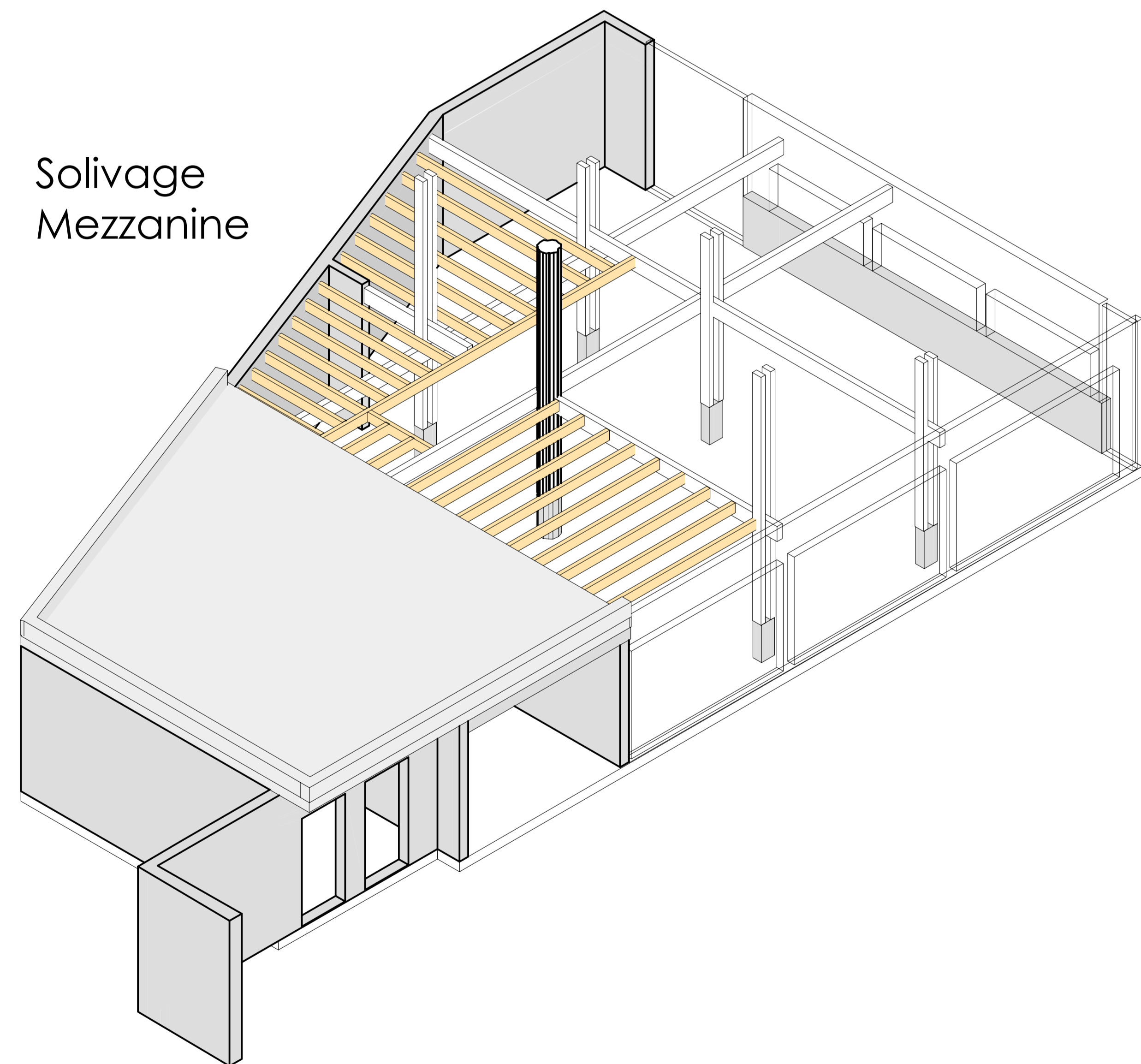
Structure Béton



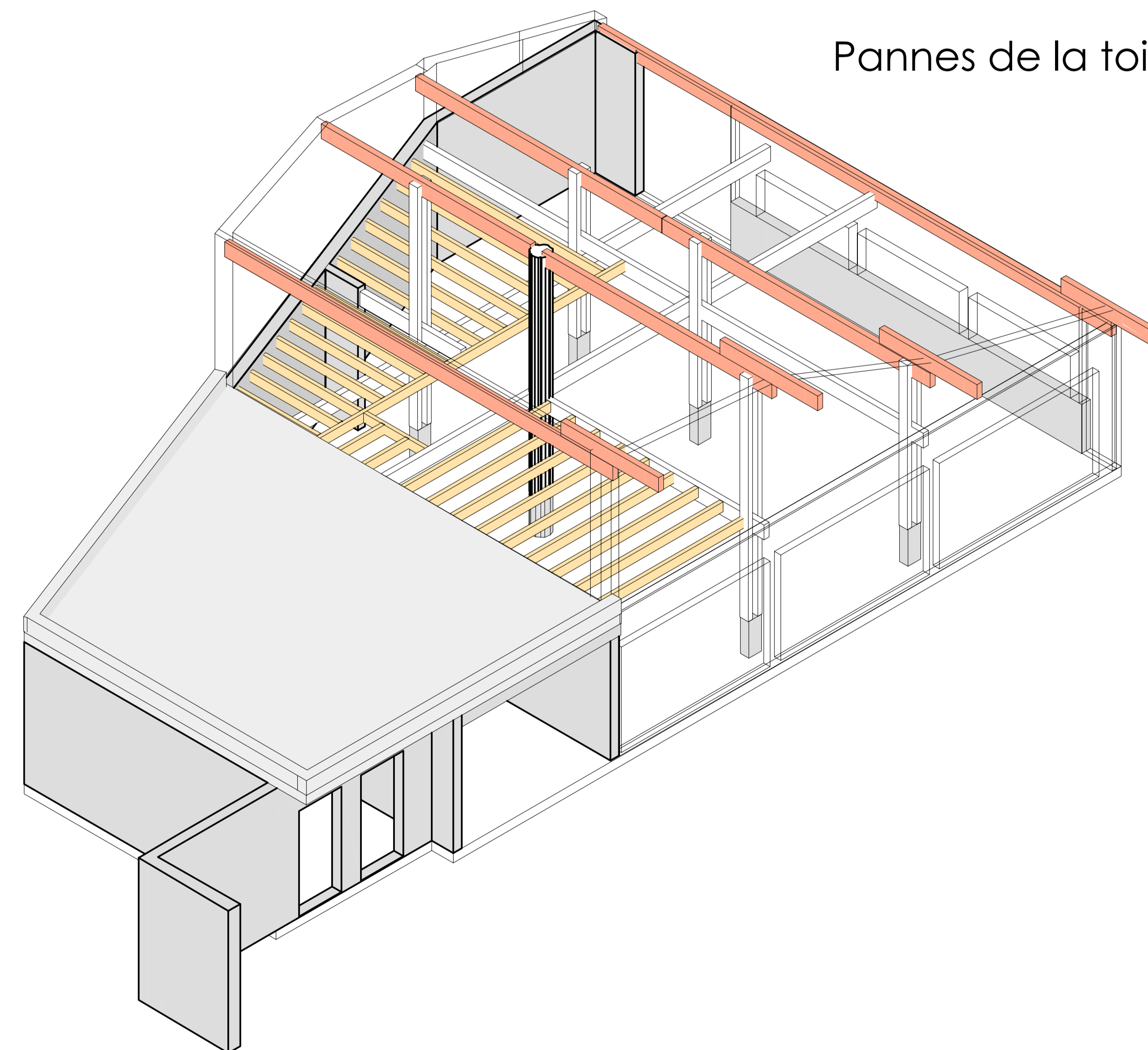
Dalle Béton  
Terrasse



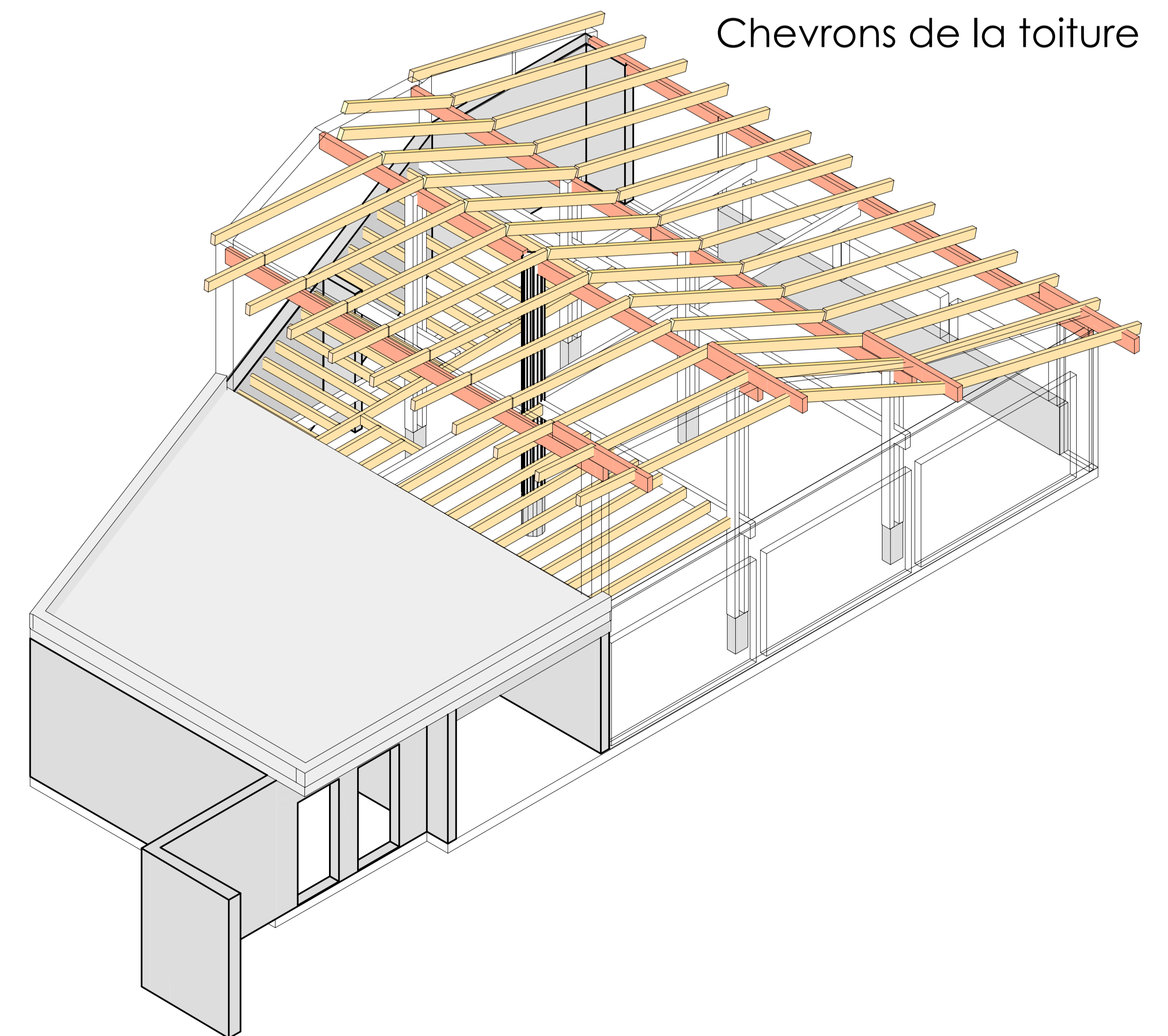
Poteaux bois et sommiers



Solivage  
Mezzanine



Pannes de la toiture



Chevrons de la toiture

## AXONOMETRIES Structure du bâtiment

Jean-Luc GERARD - ARCHITECTE 17, Place des Vosges  
88000 Epinal Tel 03 29 29 08 88 Fax 03 29 29 08 80  
jean-luc.gerard.archi@wanadoo.fr



Architecte



Fluid  
CONCEPT

Construction de la Maison du vélo du Port d'Epinal  
"Pays d'Epinal" Coeur des Vosges - Mars 2014